

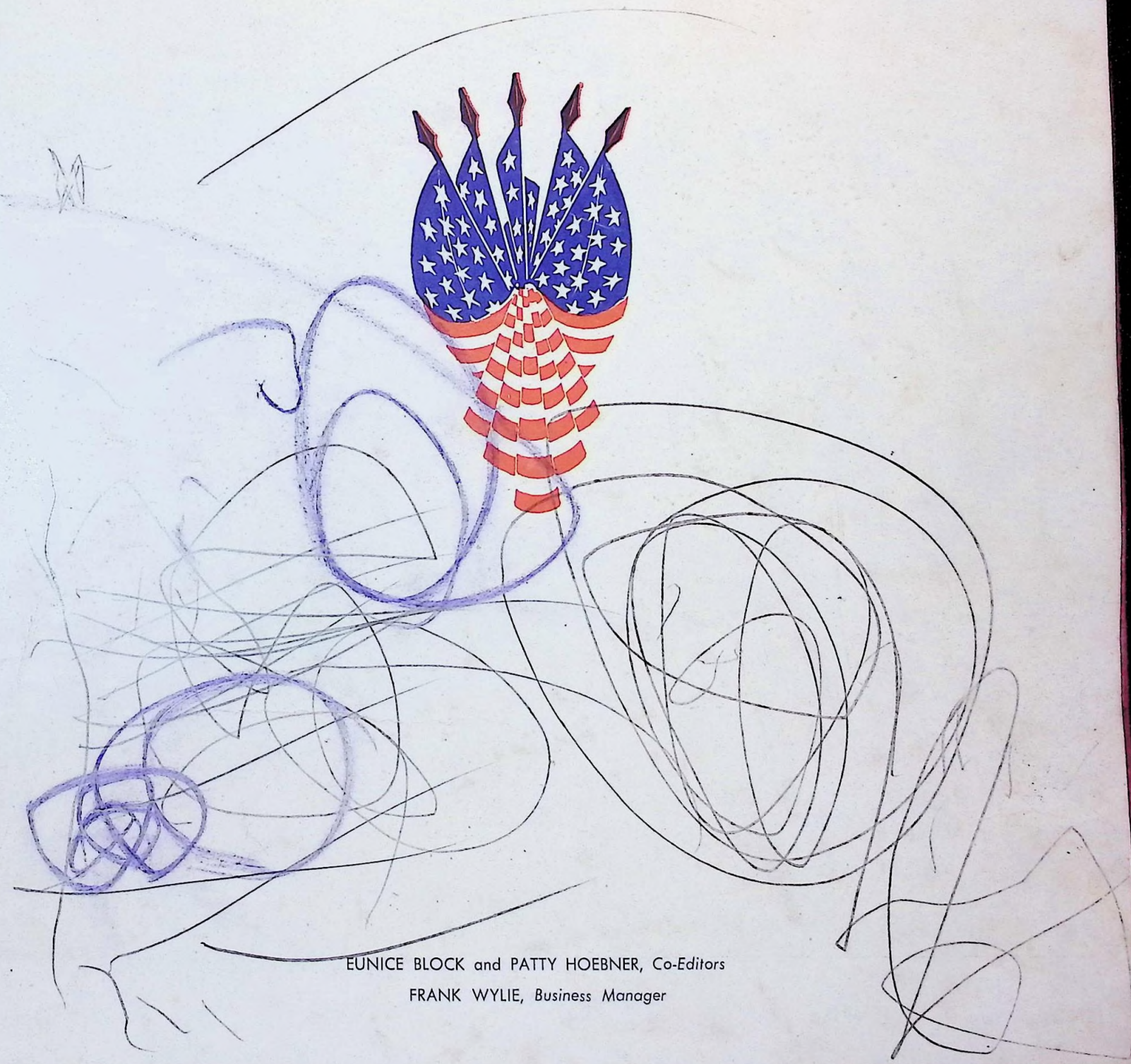


# CENTRALITE

1 ★ 9 ★ 4 ★ 2



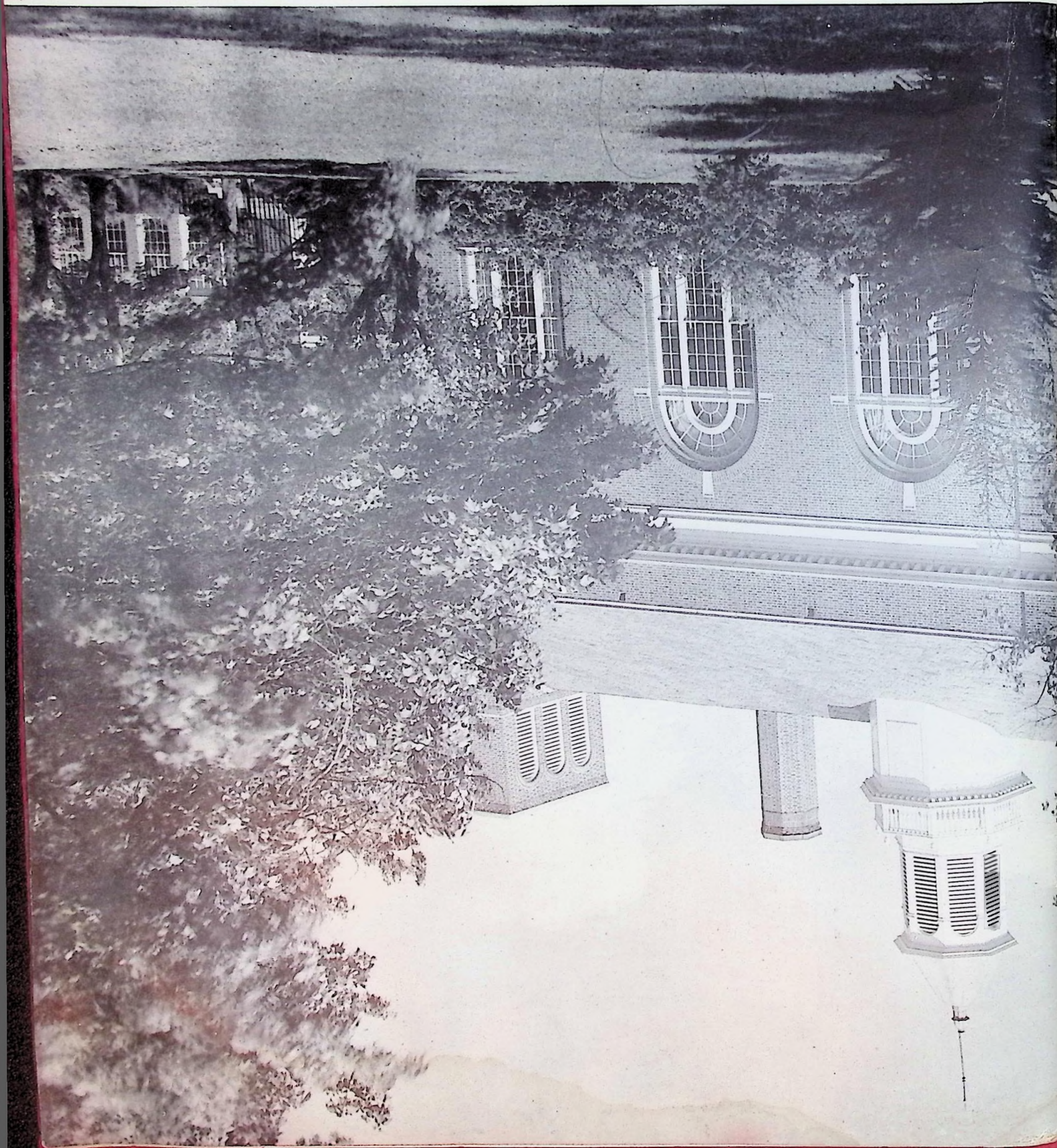
*Handwritten text, possibly a signature or date, in the top right corner.*



EUNICE BLOCK and PATTY HOEBNER, Co-Editors  
FRANK WYLIE, Business Manager



# CENTRALITE



1942





★ OUR SCHOOL

★ CLASSES

★ ORGANIZATIONS

★ FEATURES

★ ATHLETICS

# FOREWORD



In this momentous world struggle for human liberty and freedom, and even for the preservation of what we believe constitutes the best way of living, the schools of America with their high ideals will respond eagerly and give whatsoever they are called upon to do.

We here at Central pledge our support to the war effort of our government. We will try to carry on calmly and maintain a high morale and meet the crises with the same kind of fortitude that has been characteristic of Americans these many generations.

We are willing to surrender many of the things that have made American life comfortable and pleasant but we are not willing to give up freedom, justice and faith.

Already more than two hundred of our own Central boys, and some of our girls as nurses, are giving their strength and their lives to uphold our wonderful heritage of freedom. They are enlisted in all branches of the armed service, throughout the world.

Two of our boys were killed in the dastardly attack on Pearl Harbor, another is feared

lost on the Bataan peninsula; and another probably went down with the aircraft carrier Langley. These boys were regular fellows who loved life just as we do. Their sacrifices should make us all the more determined to stand fast in the faith.

As a school we have purchased several hundred dollars worth of war bonds with money raised by the students for our Liberty Day (May Day) festival. Besides this individual students have bought many times that amount in bonds and stamps. Numbers of our boys and girls are registered for civilian defense work. This is an example of the spirit that has dominated Central these thirty-six years of her existence.

In spite of world conditions and conditions at home the Centralite staff has tried to put into the 1942 Senior Edition the same thoughtful care as of former years. It is our sincere wish that from its pages you may derive much pleasure, and prize it as a book of many happy memories. It is also our wish and prayer that peace may come to every heart, as peace comes to the whole world. But until that time comes we pledge our vigilance.



# DEDICATION

WISDOM HAS SAID, "IT IS NOT HOW LONG ONE HAS LIVED, BUT HOW WELL." FORTUNATE, INDEED, THOUGH IS MANKIND WHEN DESTINY IN HER MYSTERIOUS WAY MOVES TO FILL THE LIFE OF ONE INDIVIDUAL NOT ONLY WITH DEVOTED SERVICE, BUT WITH MANY YEARS OF THIS SERVICE . . . . .

SUCH IS THE LIFE OF OUR OWN MR. SEYMOUR; AND BECAUSE WE OF THE SENIOR CLASS WISH TO HONOR JUST SUCH A LIFE, MAY WE DEDICATE TO HIM THE NINETEEN - HUNDRED - FORTY - TWO EDITION OF THE CENTRALITE . . . . .



MR. H. T. SEYMOUR

113





MISS HASSIE K. GRESHAM  
*Principal*

"If my people, which are called by my name,  
shall humble themselves, and pray, and seek  
my face, and turn from their wicked ways;  
then will I hear from heaven, and forgive  
their sin, and will heal their land."

II Chronicles 7:14





MISS EFFIE ANDERSON  
*Home Economics*

MISS LUCY ATCHLEY  
*History*

MISS ALBERTA AHLER  
*English, Latin*

MR. WILLIAM BELL  
*Mechanical Drawing*

MISS AUDREY SUSAN BRICKEY  
*Office Clerk*

MISS MARGARET DAVIDSON  
*Home Economics*

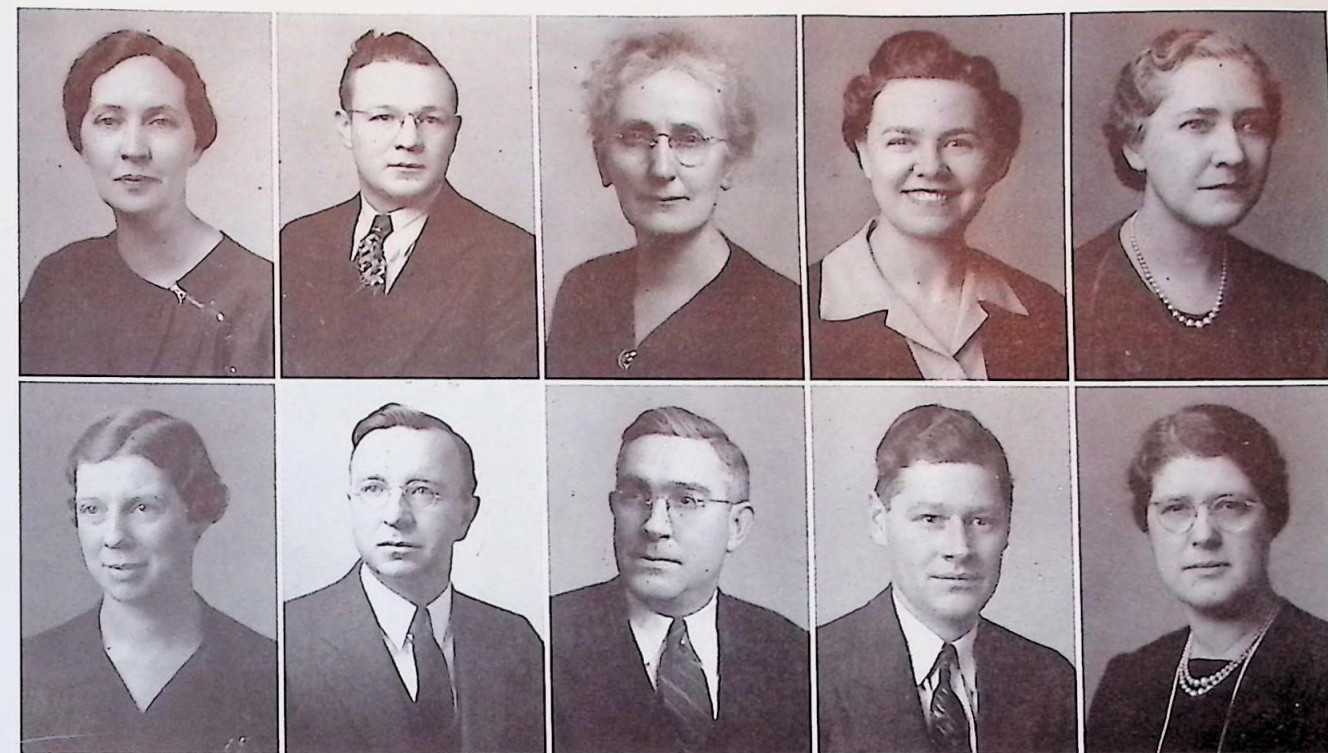
MR. EDWARD DOUGHERTY  
*Art, Civics*

MISS LOUISE DUGGAN  
*Physical Education*

MR. N. B. EUBANK  
*History, Commercial Law*

MISS LULA GIBBS  
*English*

# FACULTY



MISS KATE GIBSON  
*English*

MR. CHARLES LEE GRAVES  
*Physical Education*

MISS HASSIE K. GRESHAM  
*English*

MRS. REVA GUINN  
*Home Economics*

MISS NANNIE LEE HICKS  
*History*

MISS LAURA BELL JENNINGS  
*English*

MR. EARL KELLER  
*Mathematics*

MR. JAMES R. LARGE  
*Manual Training*

MR. TIPTON MASTERSON  
*Sociology, Economics*

MISS CLARA MASTERSON  
*English*

# FACULTY





MISS MARY MAY  
*Home Economics*

MISS LELA PACE MOORE  
*Latin*

MISS MINNIE MYERS  
*History*

MISS EVELYN PERKINS  
*Music, English*

MR. B. O. PETREE  
*Mathematics*

MRS. FANNIE BLOW W. ROGERS  
*Librarian*

MR. WILLIAM G. ROSE  
*English, History*

MR. E. S. ROSS  
*General Science*

MR. H. T. SEYMOUR  
*Mathematics*

MR. ROBERT C. SEARLE  
*Mathematics*

# FACULTY



MRS. E. M. STUART  
*History, English*

MR. E. M. STUART  
*Civics, Physics*

MISS GLADYS STONE  
*Commercial*

MR. WILLIAM R. TURNER  
*Latin, English*

MRS. LOUISE VAN GILDER  
*French, Spanish*

MISS MARY WEAVER  
*English, Dramatics*

MISS ANNA WEIGEL  
*Biology*

MISS ANNA WINEGAR  
*English*

MR. THOMAS W. WHITEHEAD  
*Chemistry*

MR. O'DELL WILLIS  
*Music*

MRS. GENEVIEVE WILSON  
*Mathematics*

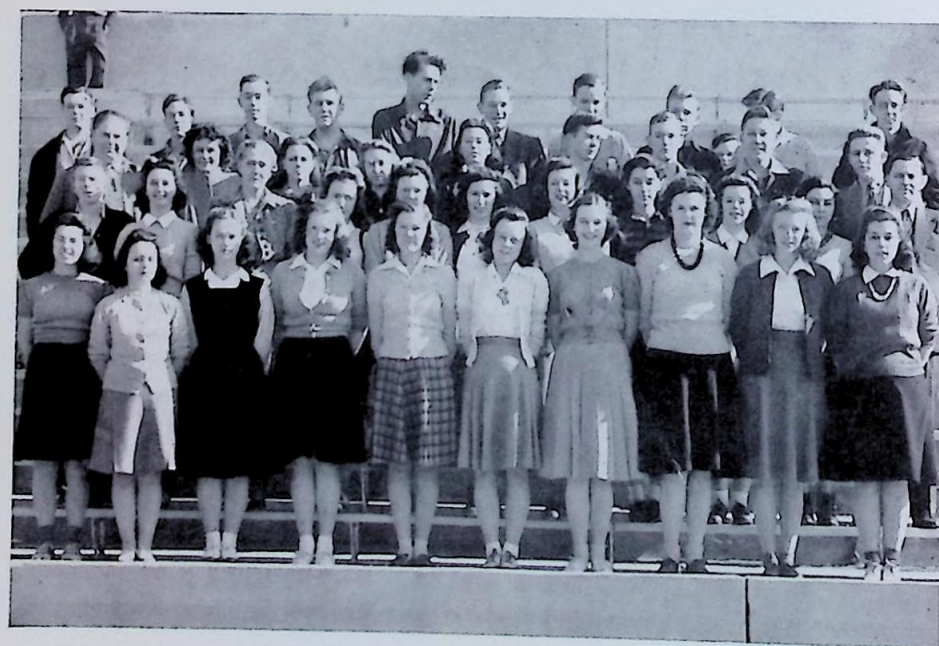
# FACULTY



S

Advertising Manager ..... Charles Lowe  
Advertising Assistants ..... S. E. Satterfield, Bill Broome,  
Bobby Sandmann, Dorothy Osmun,  
Betty Highbaugh, Billie McKinney  
Advisors ..... Miss Nannie Lee Hicks  
Mr. William G. Rose, Mr. Thomas W. Whitehead

T A F F



JOE LAY ..... *President*  
BILL YAMBERT ..... *Vice-President*  
INEZ SMITH ..... *Secretary*  
MARGARET FOGARTY ..... *Treasurer*

# SENIORS



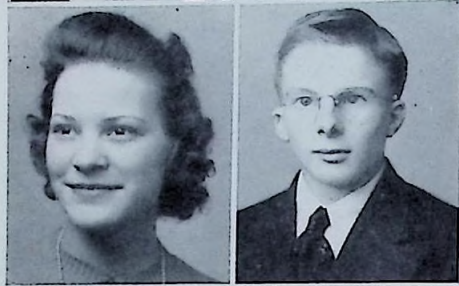
### LENA KATE AILOR

Daughter of Judge and Mrs. Thurman Ailor, Strawberry Plains, Tenn.; Centralite Staff '41, '42; Girl Reserves '39, '40, '41, '42; Vice President of Girl Reserves '41; Delegate to Girl Reserve Conference '41; May Day '40; Glee Club '39, '40; Camera Club '41; Variety Show '39; High School Day '40; Glee Club Festival '40; Glee Club Concert '40.



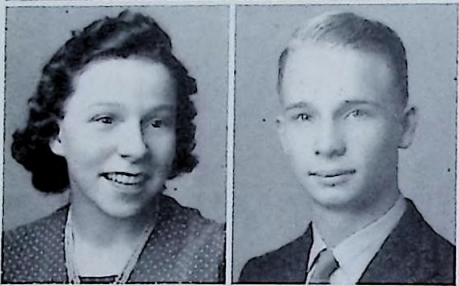
### BARBARA BALDOCK

Daughter of Mr. and Mrs. H. F. Baldock, 509 Galbraith St., Knoxville, Tenn.; Girl Reserves '39, '40, '41; Hiking Club '41, '42; Bowling Club '41.



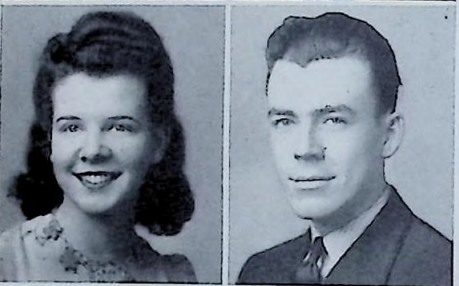
### JO ALTA BANKER

Daughter of Mr. and Mrs. L. H. Banker, 2361 East Fifth Avenue, Knoxville, Tenn.; Hiking Club '39, '40; Library Club '39, '40, '41; Monitor '41, '42.



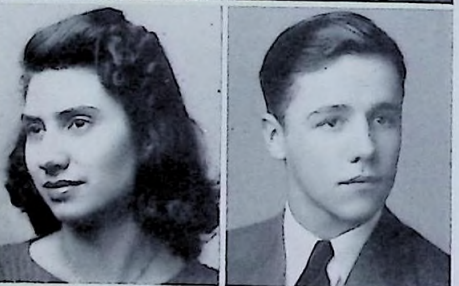
### LUCILLE BAYLESS

Daughter of Mr. and Mrs. Oren Bayless, Route 11, Fountain City, Tenn.



### JEAN BELLAM

Daughter of Mr. and Mrs. C. E. Bellam, Ball Camp Pike, Knoxville, Tenn.



### EDNA BERNEY

Daughter of Mr. and Mrs. W. E. Berney, 324 Tazewell Pike, Knoxville, Tenn.; Library Club '40, '41, '42; Chemistry Club '40, '41; Dramatics Club '41, '42; Stunt Night '41.



### CHARLOTTE BERRY

Daughter of Mr. and Mrs. J. H. Berry, Spring Hill Road, Route 6, Knoxville, Tenn.; Junior Honor Society '39, '40; Senior Honor Society '41, '42; Dramatics Club '39, '40; Debating Club '39, '40; May Day '38; Stunt Night '41; Latin Tournament '39, '40 '41; Third Place in Latin Tournament for East Tenn. '41; Latin Club '41, '42, Centralite Staff '41, '42.



### RICHARD EARL ACUFF

Son of Mr. and Mrs. N. A. Acuff, Route 5, Knoxville, Tenn.; Dramatics Club '39, '40; Chemistry Club '40, '41.

### ASA R. AMBRISTER, Jr.

Son of Mr. and Mrs. Asa R. Ambrister, Oakview Drive, Fountain City, Tenn.; Junior Honor Society '38, '39, '40; Minstrel '39, '40, '42; Hi-Y '41, '42; Dramatics Club '39, '40, '41, '42; Treasurer of Dramatic Club '39, '40; Secretary of Dramatic Club '39, '40; Debating Team '39, '40, '41, '42; Vice President of Debating Club '40, '41; President of Debating Club '41, '42; High School Day as Debator '40, '41, '42; Rep. to Asheville as Debator '40; Stunt Night '41; Latin Tournament '39; Treasurer of Junior Class '40, '41; Basketball '41, '42; Variety Show '39, '40; Centralite Staff '41, '42; Student Sport Announcer on W. N. O. X. '41, '42; Senior Honor Society '40, '41, '42.

### ROLLAND ANDERSON

Son of Mr. and Mrs. T. M. Anderson, 2204 Harvey Street, Knoxville, Tennessee

### JACK H. ATKINS

Son of Mr. and Mrs. H. M. Atkins, Buffat Road, Route 5, Knoxville, Tenn.; Variety Show '39, '40.

### DOUGLAS BAILEY

Son of Mr. and Mrs. Hop Bailey, 217 Gibbs Road, Fountain City, Tenn.; Womanless Wedding '39; Band '39, '40, '41; Chemistry Club '40, '41; Football '41, '42.

### EUGENE BARRY

Son of Mr. and Mrs. J. M. Barry, 1154 Eleanor Street, Knoxville, Tenn.; Football '41, '42; Basketball '41, '42; 4-H Club '39, '40, '41, '42.

### LLOYD BEST

Son of Mr. and Mrs. E. E. Best, 742 Maple Avenue, Fountain City, Tenn.; Minstrel '41, '42; Basketball '39; Hiking Club '42; Girl Reserve Play '40; May Day '40.

### EUNICE BLOCK

Daughter of Mr. and Mrs. H. H. Block, 625 Tazewell Pike, Fountain City, Tenn.; Junior Honor Society '39, '40; Latin Tournament '39; Dramatics Club '39, '40, '41, '42; Secretary Dramatics Club '39, '40; Debating Club '39, '40, '41; Girl Reserves '39, '40, '41, '42; Program Chairman of Girl Reserves '41; Secretary of Girl Reserves '42; Member of Girl Reserve Inter-Club Council '41, '42; Vice-President of Girl Reserve Inter-Club Council '42; Representative as Extemporaneous Speaker to Asheville '40; Chemistry Club '40, '41; Monitor '41, '42; "Ready Made Family" '40; Stunt Night '41; Minstrel '41, '42; Centralite Staff '39, '40, '41, '42; Co-Editor of Centralite '41, '42; Senior Honor Society '41, '42.

### LOUISE BORING

Daughter of Mr. and Mrs. J. A. Boring, 728 Parkway Ave., Fountain City, Tenn.; Home Ec '39, '40; Girl Reserve '39, '40, '41; Glee Club '39, '40, '41; Concert '41; High School Day U. T. '39, '40, '41; Victory Night '41; Minstrel '38, '39, '40; May Day '39, '40, '41, '42; Variety Show '39; Cheerleader '40, '41, '42.

### CLOVER ARLENE BROWN

Daughter of Mr. J. B. Brown, 605 West Fifth Avenue, Fountain City, Tenn.

### MARY CATHERINE BROWN

Daughter of Mr. and Mrs. Ray J. Brown, 311 W. 6th Avenue, Fountain City, Tenn.; Hiking Club '40, '41, '42; Bowling Club '41, '42.

### KATHLEEN LOUISE BROWN

Daughter of Mr. J. B. Brown, 605 West Fifth Avenue, Fountain City, Tenn.; Bowling Club '41, '42.

### MARY ETTA BURKHART

Daughter of Mr. and Mrs. O. H. Burkhardt, Route 5, Knoxville, Tenn.; Home Ec. Club '40, '41; Chemistry Club '40, '41.

### LOUISE BURNETTE

Daughter of Mr. and Mrs. A. G. Burnette, 445 Tazewell Pike, Knoxville, Tenn.

### HAYNE BLAKELY

Son of Mr. and Mrs. H. D. Blakely, Black Oak Ridge, Fountain City, Tenn.; May Day '38; Womanless Wedding '39; Basketball '38, '39, '41, '42; "C" Club '41, '42; Chemistry Club '41; At McCallie School of Chattanooga, Tenn.; Minstrel '40; Football '40; Basketball '40; Cheerleader '40, '41, '42.

### BILL BOZEMAN

Son of Mrs. L. H. Hargis, Mascot, Tenn.

### CLARENCE BRACKEN

Son of Mr. and Mrs. A. N. Bracken, Route 4, Knoxville, Tenn.; Chemistry Club '40, '41; Movie Operator '40, '41, '42.

### TOM CARTWRIGHT

Son of Mr. and Mrs. A. B. Cartwright, 104 Emoriland Blvd., Knoxville, Tenn.; Park Junior Hi-Y '38, '39; Monitor '38, '39; Central Monitor '40, '41; Chemistry Club '40, '41

### BILLY DANIEL

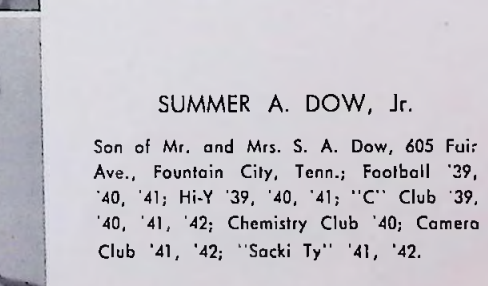
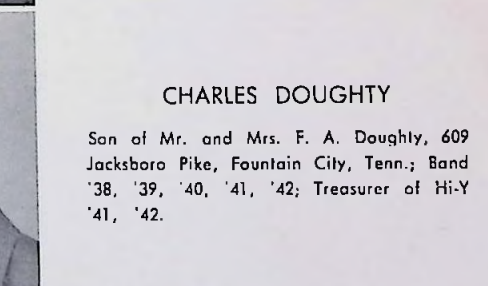
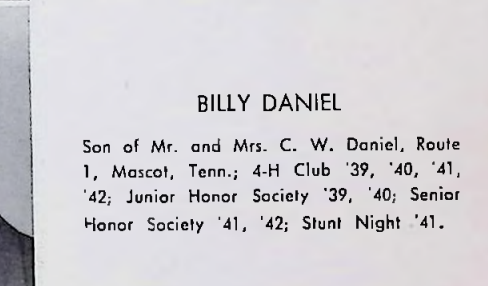
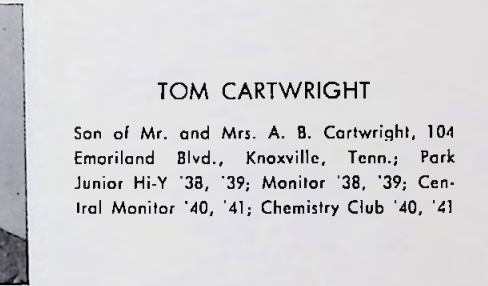
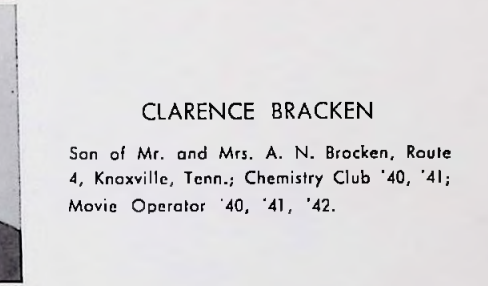
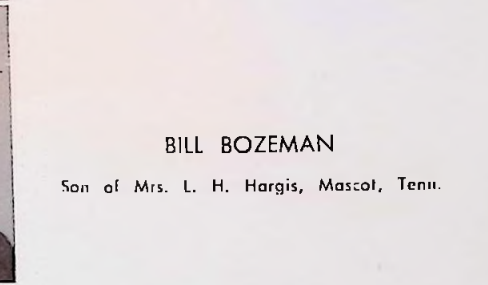
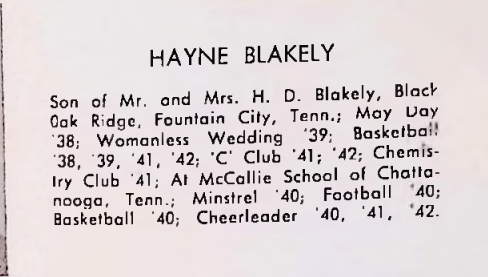
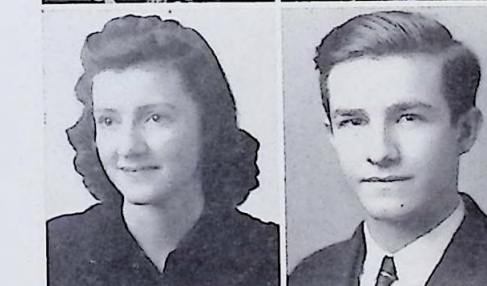
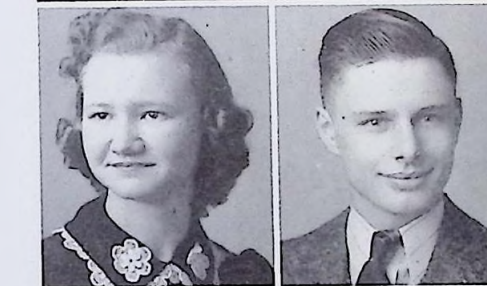
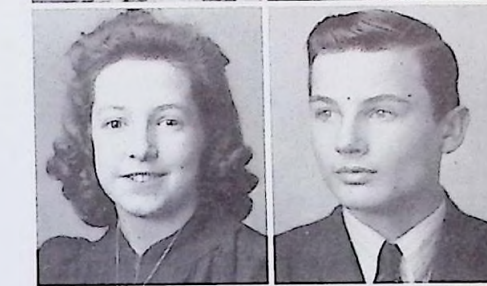
Son of Mr. and Mrs. C. W. Daniel, Route 1, Mascot, Tenn.; 4-H Club '39, '40, '41, '42; Junior Honor Society '39, '40; Senior Honor Society '41, '42; Stunt Night '41.

### CHARLES DOUGHTY

Son of Mr. and Mrs. F. A. Doughty, 609 Jacksboro Pike, Fountain City, Tenn.; Band '38, '39, '40, '41, '42; Treasurer of Hi-Y '41, '42.

### SUMMER A. DOW, Jr.

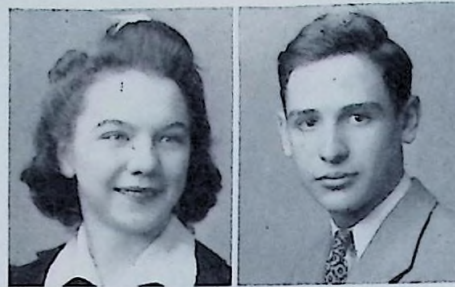
Son of Mr. and Mrs. S. A. Dow, 605 Fair Ave., Fountain City, Tenn.; Football '39, '40, '41; Hi-Y '39, '40, '41; "C" Club '39, '40, '41, '42; Chemistry Club '40; Camera Club '41, '42; "Sacki Ty" '41, '42.





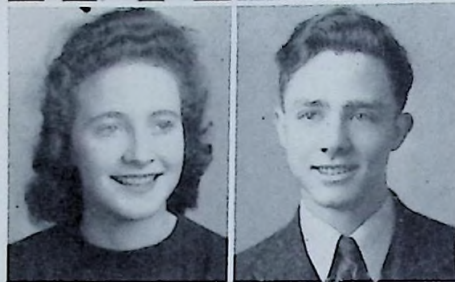
### AVERY G. CAPPS

Daughter of Mr. and Mrs. John H. Capps, 312 Tazewell Pike, Fountain City, Tenn.; Library Club '40, '41, '42; Dramatics Club '41, '42; Stunt Night '41.



### EVELYN CAUL

Daughter of Mr. and Mrs. Mack Hall, Fair Ave., Fountain City, Tenn.; Hiking Club '38, '39; May Day Program '39; Glee Club '39; Minstrel '38.



### BARBARA ANN CLARK

Daughter of Harry E. Clark, 226 E. Oklahoma Ave., Knoxville, Tenn.; Junior Honor Society '39, '40; Senior Honor Society '41, '42; Treasurer of Senior Honor Society '42; Girl Reserves '39, '40, '41, '42; Home Ec Club '38, '39; Stunt Night '41; Latin Tournament '39, '40, '41, '42; Debating Tournament '41; Debating Club '39, '40, '41, '42; Dramatics Club '42; Roman Maneuvers '41, '42; Commercial Club '42; County Wide Style Show '39; Commencement Speaker '42; May Day '40, '41.



### JEAN COBBLE

Daughter of Mr. and Mrs. J. E. Cobble, 207 Woodrow Ave., Fountain City, Tenn.; Girl Reserves Delegate to Conference '39; Girl Reserves '39, '40, '41, '42; Hiking Club '40, '41; Home Ec Club '38, '39; Junior Honor Society '39, '40; Senior Honor Society '41, '42; Dramatic Club '39, '40, '41; May Day '39, '40; Representative of Speech Department to Asheville, N. C., '40; Representative to University of Indiana '41; First Place Winner of Dramatic Declamation on High School Day '41; Drum Majorette '41, '42; Stunt Night '41.



### MARY ELIZABETH COLE

Daughter of Mr. and Mrs. L. M. Cole, Route 12, Knoxville, Tenn.; Commercial Club '41, '42.



### BETTY GRACE COUCH

Daughter of Mr. and Mrs. J. H. Couch, 301 Woodrow Ave., Fountain City, Tenn.; Home Ec Club '37, '38; Dramatics Club '38, '39, '40, '41; Girl Reserves '40, '41; Hiking Club '40; Representative district contest dramatic reading '40; Representative district contest humorous reading '40; Representative inter-state contest poetry reading.



### MARY LLOYD CUNNINGHAM

Daughter of Mr. and Mrs. S. G. Cunningham, Belmont Avenue, Fountain City, Tenn.; Home Ec Club '39, '40; Sophomore Girl Reserves; Junior Girl Reserves; Dramatics Club '41, '42; May Day '39, '40, '41; Victory Night.



### CHARLES EDINGTON

Son of Mr. and Mrs. C. H. Edington, Heiskell, Tenn.; Transferred from Powell High School '39; Debating Club '40, '41, '42; Dramatics Club '40, '41, '42; Vice-president of Dramatics Club '41, '42; Chemistry Club '40, '41; Hiking Club '40, '41; Minstrel '42; "Where the Cross is Made" '41; Representative to Bloomington, Indiana '41; High School Day at U. T. '41; Basketball '41, '42.

### JIMMY ELLIOTT

Son of Mr. and Mrs. G. H. Elliott, Washington Pike, Route 6, Knoxville, Tenn.; Chemistry Club '40, '41; Camera Club '41; Order of Sacki Ty '41, '42.

### HARRY ELLIOTT

Son of Mr. and Mrs. H. W. Elliott, Route 12, Knoxville, Tenn.; 4-H Club '40, '41; Chemistry Club '40, '41; Sketch Club '40, '41, '42; Commercial Club '41, '42.

### GEORGE H. EVANS

Son of Mr. and Mrs. O. A. Evans, Route 12, Western Drive, Fountain City, Tenn.; Band '38, '39, '40, '41, '42; Hi-Y '39, '40, '41; Volunteer Boys State '41; Sergeant of Band '41, '42.

### JOE E. FIELDEN

Son of Mr. and Mrs. E. L. Fielden, 306 Highland Drive, Fountain City, Tenn.; Band '39, '40, '41, '42; Hiking Club '42.

### JOHN ALBERT FITCH

Son of Mr. and Mrs. J. A. Fitch, Route 6, Washington Pike, Knoxville, Tenn.; Band '38, '39, '40, '41; Hi-Y '41, '42; National Music Competition Richmond, Va., '41; Rhododendron Festival Asheville '39; State Contest Johnson City '40, '41, '42.

### FRED GHEEN

Son of Mr. and Mrs. W. H. Gheen, Route 7, Knoxville, Tennessee.

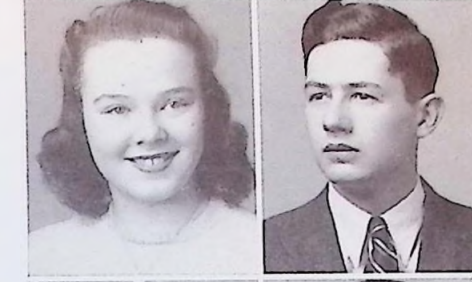
### AGNES VIRGINIA CURRIER

Daughter of Mrs. Martha Currier, Coster Road, Inskip, Senior Honor Society '41, '42; Commercial Club '41, '42; Monitor '41, '42; Stunt Night '41.



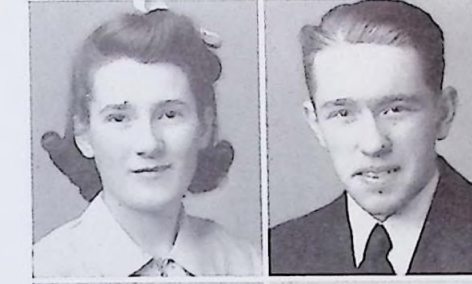
### JANE CURTIS

Daughter of Mr. and Mrs. C. S. Curtis, 406 Second Avenue, Fountain City, Tenn.; Transferred from Louisville Girls High School '39; Swimming Club '38, '39; Home Ec Club '39; Girl Reserves '39, '40, '41, '42; Variety Show '40; May Day '41; Stunt Night '41; Camera Club '42; Chemistry Club '40, '41; Glee Club '41, '42.



### PEARL DALTON

Niece of Mr. and Mrs. C. C. Grubb, Route 6, Washington Pike, Knoxville, Tenn.; Home Ec Club '39, '40; 4-H Club '39; Monitor '41, '42; Girl Reserves '40.



### ISOBEL MARIE DUNCAN

Daughter of Mr. and Mrs. E. L. Duncan, Duncan Road, Route 14, Knoxville, Tenn.; Bearden Junior High School; Girl Reserves '38, '39; Home Ec Club '38, '39; Glee Club '38, '39; Monitor '38, '39; Dramatics Club '38, '39; Transferred to Central '39; Junior Honor Society '39, '40, '41; Senior Honor Society '41, '42; Monitor '41, '42; Orchestra '39, '40.



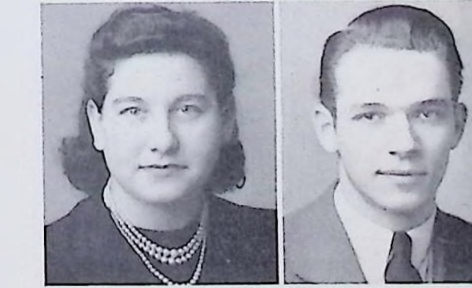
### BETTY FAIR

Daughter of Mr. and Mrs. F. M. Fair, 217 Adair Drive, Fountain City, Tenn.; Junior Honor Society '39, '40; Senior Honor Society '42; Junior Girl Reserves '40, '41; Senior Girl Reserves '41; Bowling Club '41, '42; May Day '39, '41; Minstrel '40.



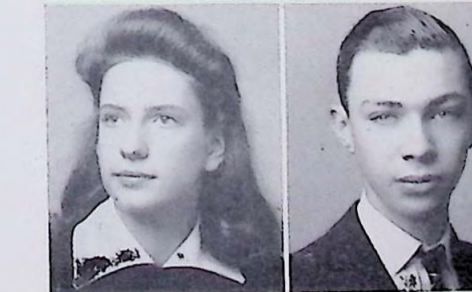
### LOIS FAIR

Daughter of Mrs. Anna Fair, 604 Maple Avenue, Fountain City, Tenn.; Commercial Club '41, '42.



### IRIS FAULKNER

Daughter of Mr. and Mrs. W. A. Faulkner, Route 6, Knoxville, Tenn.; Girl Reserves '38; Transferred from Elizabethton High School May Day '39, '41; Sketch Club '40, '41; Bowling Club '41, '42; Senior Girl Reserves '41; Secretary and Treasurer of Camera Club '41, '42.

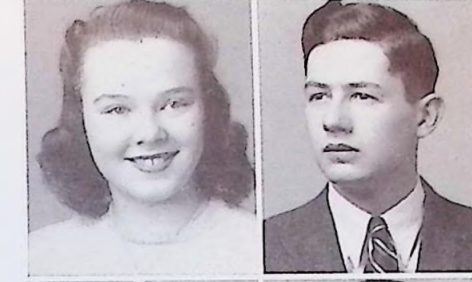


### CRAIG GROVE

Son of Mr. and Mrs. C. M. Grove, Mascol, Tenn.

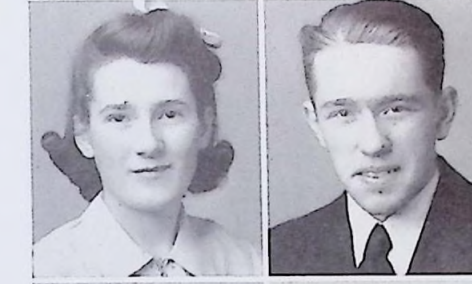
### DAVID GROVE

Son of Mr. and Mrs. Dove B. Grove, Mascol, Tenn.; Hi-Y '41, '42; Band '41, '42; Sacki Ty Club '41, '42; Hiking Club '39, '40, '41, '42.



### JAMES HEATHERLY

Son of Mrs. Anna Heatherly, 609 Maple Avenue, Fountain City, Tenn.; Band '39, '40, '41, '42.



### CALVIN HENSON

Son of Mr. and Mrs. J. B. Henson, Route 6 Knoxville, Tenn.; Gibbs Junior High School Junior Class Treasurer '40, '41; Transferred to Central '41; Safety Patrol '41, '42.



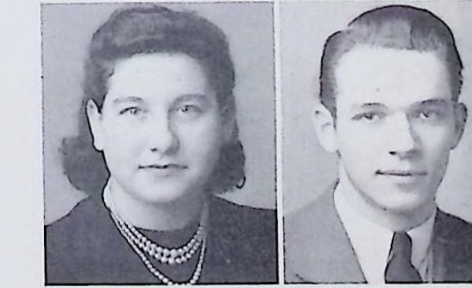
### DAVID B. HIGHBAUGH

Son of Mr. and Mrs. Harvey W. Highbaugh, Garden Ave., Fountain City, Tenn.; Transferred to Central from Knoxville High '40; R. O. T. C. Rifle Team '39, '40; Hiking Club '39, '40; Stamp Club '39, '40; Sacki Ty '41, '42.



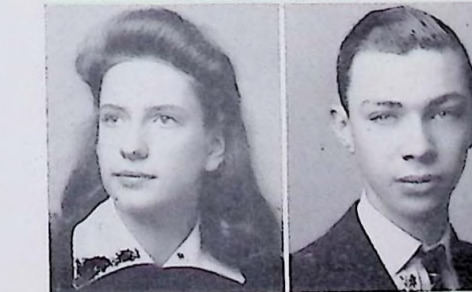
### CHARLES HOBBY

Son of Mr. and Mrs. B. H. Hobby, 1664 Golf Avenue, Knoxville, Tenn.; Minstrel '40, '41, '42; Variety Show '38, '39; E. T. E. A. Chorus '39, '40, '41, '42; Glee Club '39, '40, '41, '42; Dramatic Club '38, '39, '41, '42; Commercial Club '41, '42; Monitor '39, '40, '41; "Where the Cross is Made" '41; Representative to Bloomington, Indiana '41; Chorus Meet at Johnson City '39, '40; High School Day at U. T. '39, '40, '41, '42; President of Glee Club '39, '40, '41; Student Director of Glee Club '40, '41; Stunt Night '41.



### CLAUDE E. HOBSON, Jr.

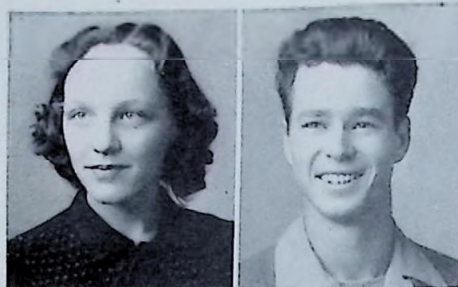
Son of Mr. and Mrs. C. E. Hobson, Columbia Tenn.; Sketch Club '40, '41, '42; Camera Club '41, '42; Monitor '41, '42; Hitler's Court '41; Letter in Art '40, '41; Minstrel '42.





### FREDA IRENE FIELDS

Daughter of Mr. and Mrs. Arthur Fields, 2046 Forestal Avenue, Knoxville, Tenn.; Monitor '40, '41.



### MILDRED RUTH FORD

Daughter of Mr. and Mrs. L. R. Ford, 601 Seventh Avenue, Fountain City, Tenn.; Home Ec. Club '38, '39; Girl Reserves '39, '40; May Day '39, '40, '41; Variety Show '39, '40; Latin Tournament '39; Minstrel '39; Bowling Club '41, '42; Senior Honor Society '42.



### MARGARET FOGARTY

Daughter of Mr. and Mrs. John Fogarty, Clinton Pike, Knoxville, Tenn.; Home Ec. Club '38, '39; Girl Reserve '38, '39; Minstrel '38, '39, '40, '41; Variety Show '39, '40; May Queen Candidate '38; May Queen Maid '39; Glee Club '39, '40, '41, '42; — Johnson City, '40 — Representative to E.T. E.A. '41; Girl Reserves '39, '40, '41; Treasurer of Senior Class '41, '42.



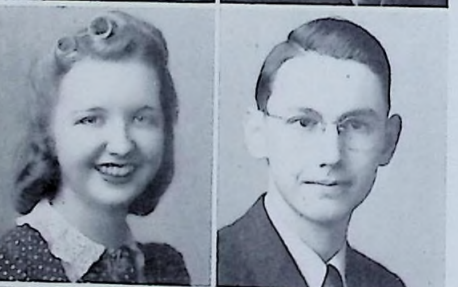
### MARY PEARL GAUT

Daughter of Mr. and Mrs. A. W. Gaut, 310 West 6th Avenue, Fountain City, Tenn.; Hiking Club '42; Bowling Club '42.



### HAZEL ANNETTE GENTRY

Daughter of Mr. and Mrs. E. E. Gentry, 118 Grove Street, Fountain City, Tenn.; Junior Band '38, '39; Intermediate Band '39, '40; Orchestra '40, '41; Junior Girl Reserves '41; Monitor '41, '42; Orchestra '41, '42; Stunt Night '41; Commercial Club '41, '42.



### BARBARA GIBBS

Daughter of Mr. and Mrs. Charles Gibbs, 112 West Fifth Avenue, Fountain City, Tenn.; Home Ec. Club '39, '40; Girl Reserves '39, '40, '41; Glee Club '39, '40; Commercial Club '41, '42; Secretary of Commercial Club '41, '42; Stunt Night '41.



### BETTY GRUBB

Daughter of Mr. and Mrs. C. C. Grubb, Washington Pike, Route 6, Knoxville, Tenn.; Home Ec. Club '39, '41, '42; Girl Reserve '39; Glee Club; Patrol; Monitor; Minstrel.



### CARL E. HUBBS

Son of Mr. and Mrs. E. T. Hubbs, Route 5, Knoxville, Tenn.; Junior Honor Society '38, '39; Football '39, '40, '41; "C" Club '40, '41; Hiking Club '40, '41; Camera Club '41; Chemistry Club '40; 4-H Club '40; Band '39, '40, '41.

### WILSON HUTCHINSON

Son of Mr. and Mrs. W. W. Hutchinson, Cedar Lane, Fountain City, Tenn.

### BARTON MILLS JONES, Jr.

Son of Mr. and Mrs. Barton M. Jones, 19 E. Norris Road, Norris, Tenn.; Transferred from Norris High School, '40; Basketball, '40, '41; Sack-Ty Club '41, '42.

### HAROLD H. KEENE

Son of Mr. and Mrs. Harold Keene, Mayfair Apartments, Fountain City, Tenn.; Safety Patrol '40, '41, '42.

### HUGH L. KITTS

Son of Charles S. Kitts, Maynardville, Tenn.; Transferred from Horace Maynard High School in '41; At H.M.H.S.: Science Club '38, '39, '40, '41; Vice-President Science Club '41; Philomathean Literary Society '38, '39, '40, '41.

### JOE LAY

Son of Mr. and Mrs. Ira V. Lay, Tazewell Pike, Fountain City, Tenn.; Junior Honor Society '39, '40; Band '38, '39, '40, '41, '42; Sergeant Band '41, '42; Senior Honor Society '41, '42; President Senior Society '42; Hi-Y '40, '41, '42; Secretary Hi-Y '40, '41; President Hi-Y '41, '42; President of Junior Class '40, '41; President of Senior Class '41, '42; Second Place French Tournament '41; Highest Average Sophomore Class '39, '40; Second highest Average Junior Class '40, '41; Volunteer Boys State '41; May Day '41.

### JOHNNY EDWARD LLEWELLYN

Son of Mr. and Mrs. J. F. Llewellyn, Buffalo Road, Route 5, Knoxville, Tenn.; Camera Club '41, '42.

### RUBY JESSIE HALE

Daughter of Mr. and Mrs. J. E. Hale, "A" Street, Fountain City, Tenn.; Dramatics Club '41, '42.

### CECILE LOUISE HALL

Daughter of Mr. and Mrs. C. V. Hall, 820 Atlantic Avenue, Knoxville, Tenn.; Transferred to Central from Christenberry Junior High School '39; Staff '38, '39; Variety Show '39; Monitor '39; Sketch Club '40, '41, '42; Bowling Club '41, F.B.L.A. '41, '42; Centralite Staff '41, '42.

### ELEANOR HALL

Daughter of Mr. and Mrs. Fred Hall, 4504 North Broadway, Fountain City, Tenn.; Library Club '40, '41, '42; Treasurer of Library Club '40; President of Library Club '41; Commercial Club '42; Vice President of Commercial Club '42; Senior Girl Reserves '41, '42; Treasurer of Girl Reserves '42; Dramatics Club '42.

### GENEVA HAMILTON

Daughter of Mr. and Mrs. L. R. Hamilton, 204 Rennac Road, Fountain City, Tenn.; Freshman Midway '38, '39, '40; Variety Show '38, '40; Amateur Show '39; Big Review '39; Carnival '41; May Day '38, '40, '41; Glee Club '40, '42 — Johnson City, '40; Concert '40; Hitler's Court '41; Minstrel Show '40, '41, '42; Girl Reserves '41, '42; Dramatics '42.

### JEANETTE HAMILTON

Daughter of Mr. and Mrs. L. R. Hamilton, 204 Rennac Road, Fountain City, Tenn.; Freshman Midway '38, '39, '40; Variety Show '38, '40; Amateur Show '39; Big Review '39; Carnival '41; May Day '38, '40, '41; Glee Club '40, '42 — Johnson City, '40; Concert '40; Hitler's Court '41; Minstrel Show '40, '41, '42; Girl Reserves '41, '42; Dramatics '42.

### DOROTHY HARGIS

Daughter of L. H. Hargis, Route 1, Mascot, Tenn.; Commercial Club '40, '41, '42; Home Ec. Club '41, '42; Senior Girl Reserves '41, '42; Centralite Staff '41, '42.

### HAZEL LEE HAYES

Daughter of Mr. and Mrs. T. J. Hayes, Hayes, Route 5, Knoxville, Tenn.; May Day '41; Girl Reserves '41, '42; Commercial Club '41, '42.

### MAC LOVINGOOD

Son of Mr. and Mrs. M. Lovingood, 134 Conner Ave., Fountain City, Tenn.

### KELLY LYNCH

Son of Mr. and Mrs. K. A. Lynch, 414 Maple Avenue, Fountain City, Tenn.

### LYNN McCLOUD

Nephew of Mrs. F. M. Fair, 217 Adair Drive, Fountain City, Tenn.; Hi-Y '39, '40, '41, '42; Chemistry Club '40, '41; Centralite '41, '42.

### ELBERT MARGUERAT

Son of A. L. Marguerat, 4512 Kingston Pike, Knoxville, Tenn.

### R. C. MAJOR

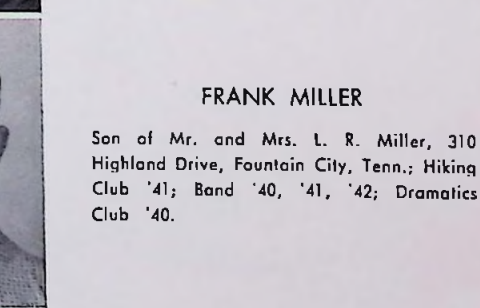
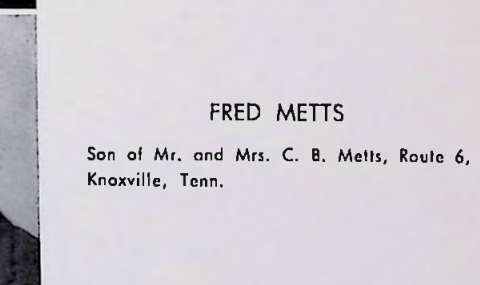
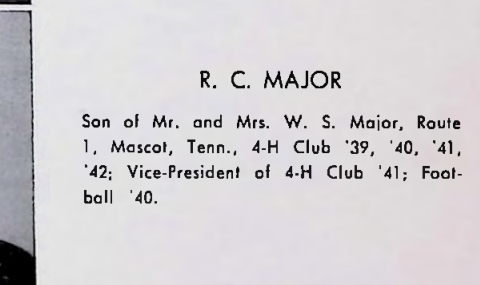
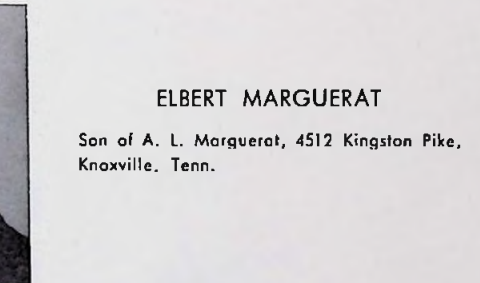
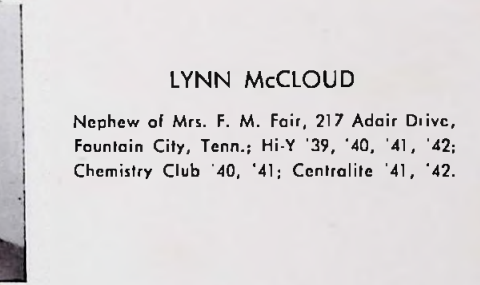
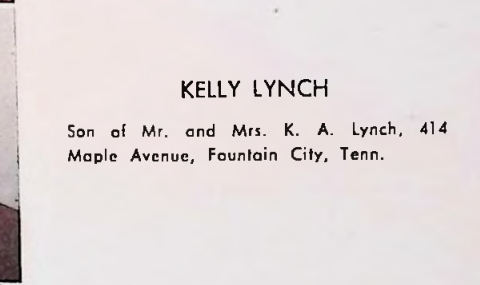
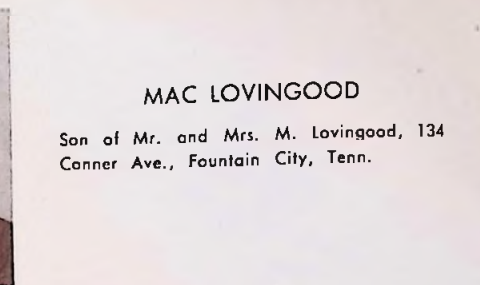
Son of Mr. and Mrs. W. S. Major, Route 1, Mascot, Tenn.; 4-H Club '39, '40, '41, '42; Vice-President of 4-H Club '41; Football '40.

### FRED METTS

Son of Mr. and Mrs. C. B. Metts, Route 6, Knoxville, Tenn.

### FRANK MILLER

Son of Mr. and Mrs. L. R. Miller, 310 Highland Drive, Fountain City, Tenn.; Hiking Club '41; Band '40, '41, '42; Dramatics Club '40.





## MARY HEATON

Daughter of Mr. and Mrs. W. H. Heaton, Ooltewah, Tenn.; May Day '39; Girl Reserves '39; Transferred to Ooltewah High School; Candidate for F. F. A. Queen '41; Candidate for Theme Girl of Junior Red Cross '41; Inter-City Council Representative of Junior Red Cross '41; Junior Play "Three Taps at Twelve," '41; Secretary Junior Class '41; Transferred back to Central; Latin Club '41, '42; Latin Tournament '39, '40; Senior Honor Society '42; Dramatics Club '41, '42; Monitor '41, '42; Senior Girl Reserves '41, '42; Stunt Night '41, '42; Social Chairman Senior Girl Reserves '42.

## BETTY JANE HICKS

Daughter of Mr. and Mrs. F. E. Hicks, Ridgewood Road, Fountain City, Tenn.; Band '38; Home Ec Club '38, '39; Girl Reserves '39, '40, '41, '42; Commercial Club '40; May Day '40; Stunt Night '41; C.H.S. Scout Troop '39, '40, '41; Centralite Staff '40, '41, '42; Alumni Editor '40, '41; Reporter '41, '42; High School Day '41.

## PATRICIA ANN HOEBNER

Daughter of Mr. and Mrs. Carl L. Hoebner, 115 Jacksboro Pike, Knoxville, Tenn.; Vice-President of Sophomore Class '39, '40; Junior Honor Society '39, '40; Secretary of Junior Honor Society '40; Hiking Club '39, '40, '41; Vice-President of Hiking Club '39, '40, '41; Library Club '39, '40; Girl Reserves '39, '40, '41, '42; Vice-President of Girl Reserves '39, '40; Senior Honor Society '40, '41, '42; President of Senior Honor Society '41; Monitor '40, '41, '42; Bowling Club '41; Vice President of Bowling Club '41; French Tournament '41; Stunt Night '41; Centralite Staff '40, '41, '42; Co-editor of Centralite '41, '42.

## CHARLSIE MAE HOBBY

Daughter of Mr. and Mrs. B. H. Hobby, 1664 Golf Avenue, Knoxville, Tenn.; Chorus '40, '41, '42; Ensemble '41, '42; Commercial Club '41; Variety Show '39; Minstrel '40, '42; Junior Honor Society; Hall Monitor '40, '41, '42; Centralite Staff '42; President of Chorus '42; ETEA Chorus '42; Glee Club Representative Johnson City '39, '40; High School Day at U. T. '39, '40, '41; Johnson City '39.

## FRANCES HOLDREDGE

Daughter of Mrs. Meta C. Holdredge, 611 Fair Avenue, Fountain City, Tenn.; Junior Honor Society '38, '39, '40; Senior Honor Society '41, '42; Girl Reserves '39, '40, '41, '42; Secretary of Girl Reserves '41.

## BOBBIE HOLLINGSWORTH

Daughter of Rev. and Mrs. R. C. Hollingsworth, 226 Jackson Avenue, Fountain City, Tenn.; Home Ec. Club '40, '41; Dramatics Club '39, '40; Glee Club '38, '40, '41, '42; Girls Chorus '40, '41; Vocal Ensemble '41, '42; Girls Trio '41, '42; Glee Club Concert '41.

## BETTY HUFFAKER

Daughter of Mr. and Mrs. Lawrence Huffaker, 429 Essary Road, Fountain City, Tenn.; Glee Club '38, '39; Glee Club Concert '39; Minstrel.

## DAN MORGAN

Son of Mr. and Mrs. Fred Morgan, Route 6, Knoxville, Tenn.

## JOE MURRAY

Son of Mr. A. C. Murray, Route 1, Knoxville, Tenn.

## WESTON MURRIAN

Son of Mr. and Mrs. James A. Murrian, Jacksboro Pike, Fountain City, Tenn.; Band '38, '39, '40, '41, '42; Hi-Y '41, '42.

## JAMES DEWEY MYNATT

Son of Mr. and Mrs. J. D. Mynatt, 744 Maple Street, Fountain City, Tenn.; Hi-Y '40, '41; Hi-Y Membership Chairman '41, '42; Safety Patrol '40, '41; Sack-Ty '41, '42; Monitor '41, '42.

## CARL NELSON

Son of Dr. and Mrs. C. A. Nelson, Fountain Avenue, Fountain City, Tenn.; Band '39, '40, '41, '42; Junior Honor Society '39, '40; Orchestra '41, '42; Chemistry Club '40, '41; Stunt Night '42; Freshman Night '39; Basketball '38, '39; Debating Club '40, '41; Dramatics Club '40, '41; Latin Tournament '39; Hi-Y '39, '40, '41, '42.

## WENDOL OGG

Son of Mr. and Mrs. E. A. Ogg, 219 Highland Drive, Fountain City, Tenn.; Glee Club '41, '42; Stunt Night '41; Sack-Ty '41; Minstrel '41, '42; Variety Show '41; Dramatics Club '42.

## LeROY OGLE

Son of Mr. and Mrs. Olha Ogle, 2388 Kingston Pike, Knoxville, Tenn.; Junior Honor Society '39, '40; Chemistry Club '41; Hi-Y '41, '42.

## JUANITA HARRIS

Daughter of Mr. and Mrs. J. C. Harris, 228 Marion Street, Fountain City, Tenn.; Rule High School; President of Class '39, '40; Monitor '39, '40; Servio Club '39, '40; Civics Club '39, '40; Vice President '40; Honor Society '40; Transferred to Central '41; Sketch '41; President of Sketch Club '41, '42.

## REBECCA ANN IRWIN

Daughter of Mr. and Mrs. Sam M. Irwin, 313 East Morelia Avenue, Knoxville, Tenn.; Girl Reserves '39, '40, '41; Dramatics Club '39, '40.

## ZOE JEFFERS

Daughter of Mr. and Mrs. M. T. Jeffers, Colonial Circle, Fountain City, Tenn.; Junior Honor Society '39, '40; Senior Honor Society '41, '42; Treasurer of Senior Honor Society '41, '42; Centralite Staff '41, '42; Roman Maneuvers '41, '42; Constitutional Committee Roman Maneuvers '41; May Day '39, '40; Variety Show '38; Latin Tournament '39, '40, '41, '42; Home Ec Club '39; Stunt Night '41; Girl Reserves '42; County Wide Style Show '40.

## ROSEMARY JOHNSON

Daughter of Mr. and Mrs. Robert Johnson, 107 Woodrush Ave., Fountain City, Tenn.; Junior Honor Society '39, '40; Girl Reserves '39, '40, '41, '42; Secretary of Girl Reserves '39, '40; Treasurer of Sophomore Class '39, '40; Secretary of Junior Class '40, '41; Senior Honor Society '41, '42; Vice-President of Senior Girl Reserves '42.

## JEAN JOHNSON

Daughter of Mr. and Mrs. David M. Johnson, Dutch Valley Road, Knoxville, Tenn.; Girl Reserves '39, '40, '41, '42; Delegate Girl Reserve Conference '40; President of Junior Girl Reserves '40, '41; Vice-President Girl Reserve Inter-Club Council '41; Candidate for May Queen '39; May Day '39, '40; Band Sponsor '41, '42.

## MARY ELEANOR JONES

Daughter of Mr. and Mrs. Sam A. Jones, Colonial Circle, Fountain City, Tenn.; Junior Honor Society '39, '40; Senior Honor Society '41, '42; Secretary of Senior Honor Society '41, '42; Orchestra '39, '40, '41, '42; Band '41, '42; E. T. Band Clinic at Maryville '42; French Tournament (regional and state) '41; Variety Show '38, '39, '40, '41; Freshman Program '39; Class Day '40, '41; First Prize Kiwanis Club Essay Contest '42; D. A. R. Citizenship Award '42.

## ALICE KARNES

Daughter of Mr. and Mrs. Houston Karnes, Cedar Lane, Fountain City, Tenn.; Junior Honor Society '39, '40; Senior Honor Society '41; Home Ec. Club '39; Girl Reserves '40, '41; May Queen Maid '40; Secretary of Sophomore Class '40; Big Review '39; Library Club '40; Stunt Night '41.

## FORD EDESEL OWEN

Son of Mr. and Mrs. E. M. Owen, 307 W. Sixth Ave., Fountain City, Tenn.; Football '38, '39, '40; Captain of Football Team '41; "C" Club '38, '39, '40, '41; Hi-Y '39, '40; Womanless Wedding '39; "Where the Cross is Made" '40; Basketball '38, '39, '40.

## BILL PERRY

Son of Mr. and Mrs. J. N. Perry, Route 2, Knoxville, Tenn.; Safety Patrol '41, '42; Movie Operator '41; Football '41.

## PAUL W. PLESS, Jr.

Son of Mr. and Mrs. Paul W. Pless, Pine Road, Norris, Tenn.; Transferred from Central to Norris in '39; transferred back to Central in '41.

## J. L. POWELL

Son of Mr. and Mrs. John L. Powell, Murphy Road, Route 12, Knoxville, Tenn.; Movie Operator '41, '42.

## RALPH PRICE

Son of Mr. and Mrs. Thurman Price, 432 E. Radford Place, Knoxville, Tenn.; Transferred from Rule High School '41. Monitor '38, '39, Track '38; Decathlon '41.

## BILL QUIGG

Son of Mr. and Mrs. R. J. Quigg, 3108 Fountain Park Boulevard, Knoxville, Tenn.; Hiking Club '40, '41; Chemistry Club '39, '40; French Pageant '39, '40; Hi-Y '39, '40, '41; Circulation Manager '41, '42; Camera Manager '39, '40; Business Manager '40, '42; Circulation Manager '41, '42; Camera Club '41, '42; Glee Club '41, '42; Sack Ty Club '41, '42.

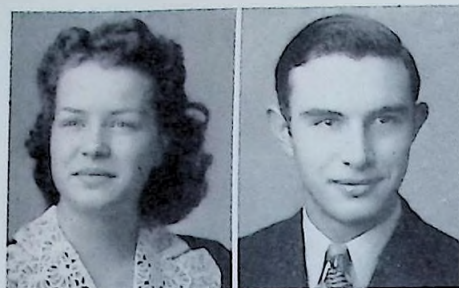
## BRUCE REED

Son of Mr. and Mrs. Roy Reed, Route 5, Knoxville, Tenn.



### MILDRED KEESLING

Daughter of Mr. and Mrs. C. A. Keesling,  
430 "A" Street, Fountain City, Tenn.



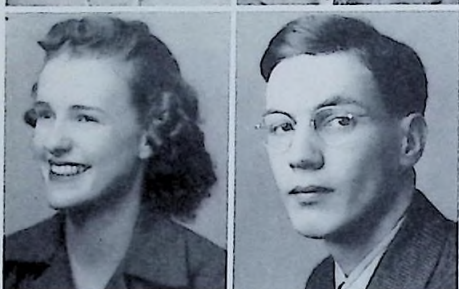
### IRENE ELIZABETH KEMPTON

Daughter of Mrs. Pearl Kempton, Inskip,  
Tenn.; Girl Reserves '39, '40, '41, '42; Bowl-  
ing Club '41, '42; Commercial Club '41, '42;  
Home Economics Club '38, '39.



### ANIECE KIRBY

Daughter of Mrs. Hettie E. Kirby, 325 Fifth  
Avenue, Fountain City, Tenn.; Cheerleader  
'39, '40, '41, '42; Home Ec Club '39, '40,  
'41; Girl Reserves '39, '40, '41, '42; May  
Day '40, '41; President of Sophomore Class  
'39, '40.



### MARGARET JEAN LEINART

Daughter of Mr. and Mrs. B. H. Leinart,  
518 Fourth Avenue, Fountain City, Tenn.;  
Girl Reserves '39, '40, '41; Treasurer of Girl  
Reserves '39; Home Ec Club '39, '40; May  
Day '39, '40, '41; Minstrel '40; May Day  
Maid '40; Drum Majorette '40, '41, '42;  
Stunt Night '42; Variety Show '40.



### POLLY ANNA LEINART

Daughter of Mr. and Mrs. B. H. Leinart, 518  
Fourth Avenue, Fountain City, Tenn.; Officer  
of Home Ec. Club '39; Program Chairman  
Junior Girl Reserves '40; President Sopho-  
more Girl Reserves '39, '40; Member Inter-  
Club Council Girl Reserve '40, '41; Delegate  
to Girl Reserve Conference, Pineville, Ky.,  
'39; Delegate Girl Reserve Conference, At-  
lanta Ga., '40; Glee Club '39, '40, '41;  
Johnson City '40; High School Day U. T.  
'39, '40; Concert '40, '41; May Day '39,  
'40, '41; Minstrel '38, '39, '40; Variety Show  
'39; Monitor '41, '42; Centralite Staff '41,  
'42.



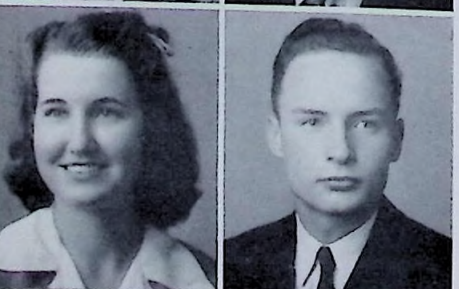
### GEORGIA INEZ LEE

Daughter of Mr. and Mrs. G. A. Lee, Beverly  
Road, Route 12, Knoxville, Tenn.; Home Ec  
Club '39; Commercial Club '41, '42.



### MARIE LETT

Daughter of Mr. and Mrs. C. S. Lett, 200  
Lynnview Avenue, Fountain City, Tenn.;  
Home Ec Club '39, '40; Debating Club '41,  
'42; Dramatics Club '41, '42.



### JAMES RUSSELL

Son of Mr. and Mrs. W. B. Russell, Route  
2, Fountain City, Tenn.; Safety Patrol '41,  
'42.

### TED RUTHERFORD

Son of Mr. and Mrs. Frank T. Rutherford, 234  
Tazewell Pike, Fountain City, Tenn.; Vice-  
President of Freshman Class '38, '39; Junior  
Honor Society '39, '40; Senior Honor Society  
'41, '42; Vice-President of Senior Honor  
Society '41; Hi-Y '41, '42; Stunt Night '41;  
President of Latin Club '41, '42.

### BOB SANDMANN

Son of Mr. and Mrs. C. R. Sandmann, 230  
Gibbs Road, Fountain City, Tenn.; Hi-Y '40,  
'41, '42; Sacki Ty '41, '42; Monitor '41, '42;  
Centralite Staff '41, '42.

### CLAUDE SCHAAD

Son of Mr. and Mrs. R. A. Schaad, Route  
7, Knoxville, Tenn.; Safety Patrol '38, '39.

### WILLIAM A. SCANLAN, Jr.

Son of Mr. and Mrs. William A. Scanlan,  
56 West Norris Road, Norris Tenn.; Norris  
High '38, '39, '40; President, Norris School  
Cooperative, '39, '40; Transferred to Central,  
'40; Basketball, '40, '41, '42; Sacki Ty Club  
'41, '42.

### FRED SHANTON, Jr.

Son of Mr. and Mrs. Fred Shanton, Hiawas-  
see Avenue, Fountain City.; Dramatics Club  
'39, '40; Junior Honor Society '39, '40;  
Senior Honor Society '41, '42; Chemistry  
Club '40, '41; Hi-Y '40, '41, '42; Hiking  
Club '40, '41; Treasurer of Hiking Club '41,  
'42.

### JOE M. SMALLMAN

Son of Mr. and Mrs. B. M. Smallman, Cedar  
Lane, Fountain City, Tenn.; Band '39, '40.

### MARIE LEWIS

Daughter of Mr. and Mrs. Oliver U. Lewis,  
Central Avenue, Pike, Knoxville, Tenn.; Home  
Ec Club '39, '40; Dramatics Club '38; May  
Day '40; Debating Club '39; Girl Reserves  
'41, '42; Bowling Club '42.

### JANE LOVE

Daughter of Mr. and Mrs. Lester A. Love,  
908 Atlantic Avenue, Knoxville, Tenn.

### FRANCES LOVINGOOD

Daughter of Mr. and Mrs. M. Lovingood,  
134 Conner Ave., Fountain City, Tenn.; De-  
catur Girls High School; Vice President of  
Freshman Class; Orchestra '39, '40; Varsity  
Basketball '39, '40; Transferred to Central;  
Orchestra '41, '42; Band '41, '42; Minstrel  
'41; Variety Show '41.

### AVANELL JUANITA McCARTT

Daughter of Mr. and Mrs. J. M. McCartt,  
Burns Street, Knoxville, Tenn.; Home Ec.  
Club '39, '40; Commercial Club '40, '41;  
Literary Club '40, '41.

### JUANITA McCLOUD

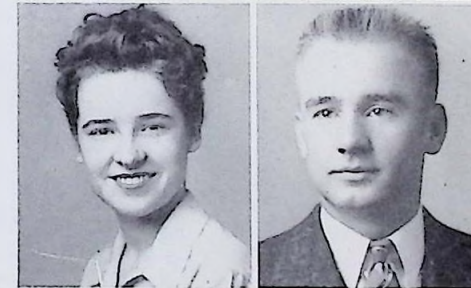
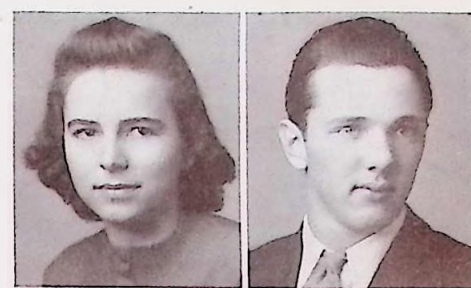
Daughter of Mr. and Mrs. B. J. McCLOUD,  
409 Garden Avenue, Fountain City, Tenn.

### MARY HANNAH McMURRY

Daughter of Mr. and Mrs. L. M. McMurry,  
Berry Avenue, Knoxville, Tenn.; Honor Roll  
'40, '41; Senior Honor Society '42; F.B.L.A.  
Club '41, '42.

### WILLIE MAE MATTHEWS

Daughter of Mr. and Mrs. M. P. Matthews,  
Boys Bridge Pike, Knoxville, Tenn.; Girl Re-  
serves '40, '41; Commercial Club '40, '41;  
Monitor '40, '41; Home Economics Repre-  
sentative for Miller's Style Show '40, '41;  
Minstrel '41, '42; Glee Club '41, '42.



### EDWIN SMITH

Son of Mr. and Mrs. Everett Smith, May-  
nardville, Tenn.; Transferred to Central '39.  
At Horace Maynard High School: Philoma-  
theian Literary Society '38; Science Club '38;  
At Central: Band '39, '40; Hi-Y '40, '41;  
Chemistry Club '40, '41; Sketch Club '40, '41;  
Hiking Club '40; "C" Club '40, '41; Com-  
mercial Club '41.

### EVERETT SMITH, Jr.

Son of Mr. and Mrs. Everett Smith, May-  
nardville, Tenn.; Transferred to Central High  
School '40. At Horace Maynard High School:  
Science Club '38, '39, '40; Philomatheian  
Literary Society '38, '39, '40; President of  
Sophomore Class '39, '40; Basketball '39,  
'40; At Central: Chemistry Club '40, '41;  
Basketball '40, '41, '42.

### ROSCOE C. SMITH, Jr.

Son of Rev. and Mrs. Roscoe C. Smith,  
Inskip, Tenn.; Christenberry Junior High  
School; Farewell Play and May Day Pro-  
gram; Transferred to Central: May Day '40;  
Monitor '40, '41; Hi-Y '40, '41, '42; Stunt  
Night '41.

### MORRIS L. SNOW

Son of Mr. and Mrs. M. L. Snow, Inskip,  
Tenn.

### RALPH STORMER

Son of Mr. and Mrs. C. E. Stormer, Route  
12, Fountain City, Tenn.; Hiking Club '40,  
'41, '42; Vice-President Hiking Club '41, '42;  
Hi-Y '40, '41, '42; Chemistry Club '40, '41;  
"C" Club '41, '42; Football '40, '41.

### BILL RAYMOND STOREY

Son of Mr. and Mrs. C. M. Storey, West  
Woodrow Avenue, Route 2, Fountain City,  
Tenn.; Glee Club '41, '42.

### FRANCES MARIE MATHIS

Daughter of Mr. and Mrs. Fred Mathis, In-  
skip, Tenn.; Glee Club '39, '40; Girl Re-  
serves '39, '40, '41, '42; Monitor '41, '42;  
Commercial Club '41, '42; Bowling Club '41,  
'42.



### FRANCES METTS

Daughter of Mr. and Mrs. C. B. Metts, Washington Pike, Route 6, Knoxville, Tenn.; Commercial Club '41, '42; Bowling Club '41, '42.



### PAULINE ELLEN MINTON

Daughter of Mrs. J. A. Minton, Route 7, Knoxville, Tenn.; Home Ec Open House '39; Home Ec Style Show '39, '40; Library Club '40, '41; Senior Honor Society '41, '42.



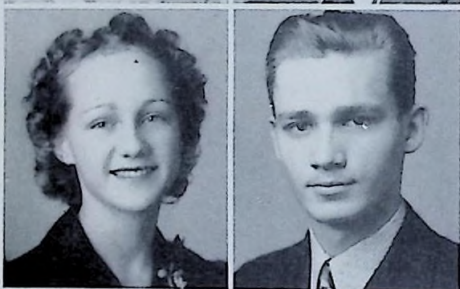
### MARGARET MONEYHUN

Daughter of Mr. and Mrs. R. M. Moneyhun, 234 Marion Street, Fountain City, Tenn.; Minstrel '38, '39, '40, '41, '42; Variety Show '39, '40; Home Ec Club '38, '39, '40; Dramatics Club '39, '40; May Day '38, '39, '40, '41; Glee Club '38, '39, '40, '41, '42; Concert '40.



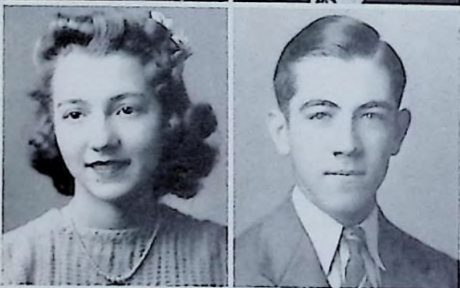
### ATICA LOUISE MORRIS

Daughter of Mr. and Mrs. J. L. Morris, 825 North Broadway, Knoxville, Tenn.; Transferred from Murphy High, North Carolina, '40. Junior Girl Reserves '40; Bowling Club '41, '42.



### MARIE NORTHERN

Daughter of Mr. and Mrs. H. W. Northern, 813 Atlantic Avenue, Knoxville, Tenn.; At Christenberry: Girl Reserves '37, '38; Senior Class Play '38; Transferred to Central in '39; Latin Tournament '40; May Day '40, '41; Monitor '41, '42; Bowling Club '41, '42; Centralite Staff '41, '42; Dramatics Club '41, '42.



### JESSIE RUTH NEWMAN

Daughter of Mr. and Mrs. H. A. Newman, 986 Valley Avenue, Knoxville, Tenn.; Glee Club '38, '41, '42; Latin Tournament '39; Variety Show '39; High School Day U. T. '41; Victory Night '41; Minstrel '41; Glee Club Concert '41; Stunt Night '42; Freshman Night '42; E.T.E.A. Chorus '42.



### HELEN O'DELL

Daughter of Mr. and Mrs. H. L. O'Dell, 239 Jackson Avenue, Fountain City, Tenn.; Home Ec. Club '38, '39; May Day '39, '40; Girl Reserves '40, '41.



### JIMMY STRANGE

Son of Mr. and Mrs. W. L. Strange, Concord, Tenn.; Route 1, Sketch Club '41, '42.



### HAROLD TARVER

Son of Mrs. Gladys Tarver, Route 5, Knoxville, Tenn.



### FREDERICK TAYLOR

Son of Mr. and Mrs. Clarence Taylor, 1808 Parker Street, Cleveland, Tenn.; Transferred from Bradley County High School, Cleveland, Tenn.; '40; Glee Club '40, '41, '42; Minstrel '41, '42; Sketch Club '40, '41; Stunt Night '41.



### RAYMOND GILBERT TIPTON

Son of G. F. Tipton, Route 12, Knoxville, Tenn.; Transferred to Central from Knoxville High '38.



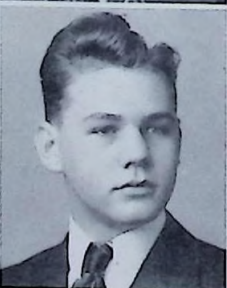
### RAY TOWLE

Son of Mr. and Mrs. W. L. Towle, Bearden, Tenn.; Winner of Citizenship Trophy '40, '41; May Day '37; Drum Major '41, '42; Band '37, '38, '39, '40, '41, '42; Officer '39, '40, '41, '42; Hi-Y '39, '40, '41, '42.



### J. C. TURNER, Jr.

Son of Mr. and Mrs. J. C. Turner, Rutledge Pike, Route 5, Knoxville, Tenn.; Junior Honor Society '39, '40; Senior Honor Society '41, '42.



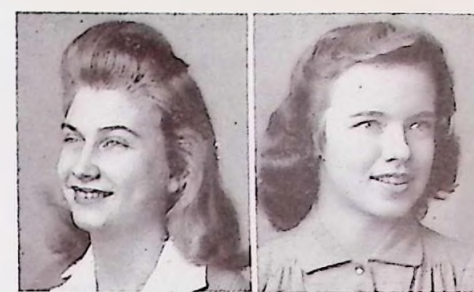
### VIRGINIA DANIEL OSMENT

Daughter of Mrs. C. D. Osmont, Asheville, North Carolina; Glee Club at Mount Olive High School '38, '39; Glee Club; Jr. Class and Dramatics Club at Montreat College, Montreat, N. C., '39, '40; Transferred to Central '40; Hiking Club '40, '41; Girl Reserves '40, '41; Program Chairman of the Senior Girl Reserves '42.



### MARTHA PARKER

Daughter of Mr. and Mrs. Garrett M. Parker, 100 Garden Avenue, Fountain City, Tenn.; Glee Club '39, '40; Girl Reserves '39; Commercial Club '40, '41, '42; Office Monitor '41, '42.



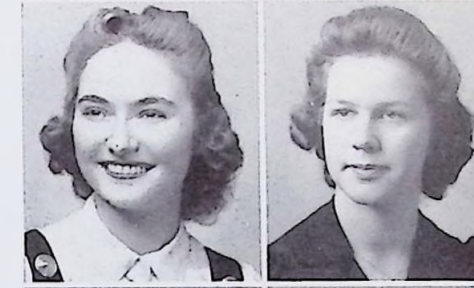
### ELIZABETH PETREE

Daughter of Mr. and Mrs. E. L. Petree, 304 Seventh Avenue, Fountain City, Tenn.; Transferred to Central from Knoxville High School '41. At Knoxville — Girl Reserves; Latin Club; Red Cross Service Pin for 100 hours.



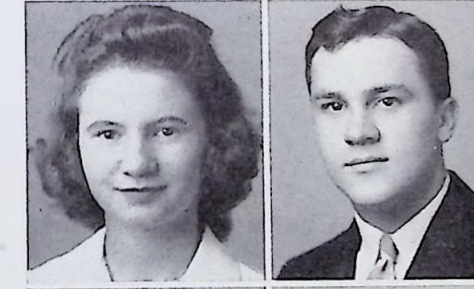
### VIRGINIA PETREE

Daughter of Mr. and Mrs. L. O. Petree, 614 Woodrow Avenue, Fountain City, Tenn.; May Day '39, '40; Minstrel '39, '40, '41, '42; Glee Club '39, '40, '41; Junior Honor Society '39, '40; Dramatics Club '42; Freshman Midway '39, '40; Commercial Club '42; Stunt Night '41; Variety Shows '40, '41; High School Day at U. T. '39, '40, '41; Victory Night '41; Music Festival Johnson City '39, '40.



### BETTY JO POWERS

Daughter of Mr. and Mrs. H. A. Powers, Briarcliff Road, Fountain City, Tenn.; Knoxville High School: Orchestra '39; Latin Club '39; Transferred to Central; Orchestra '41, '42; E.T.E.A. Orchestra '40, '41; May Day '41; Band '42; Senior Honor Society '42; Bowling Club '42; E. T. Band Clinic At Maryville '42.



### VIRGINIA OPAL RAINES

Daughter of Mrs. R. M. Raines, 'A' Street, Fountain City, Tenn.



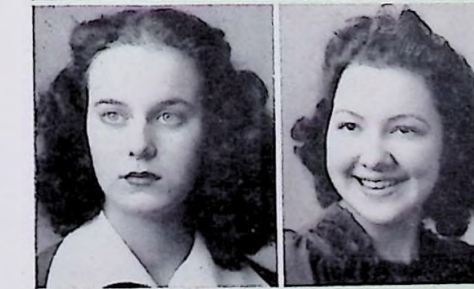
### WILMA REED

Daughter of Mr. and Mrs. M. L. Reed, Rutledge Pike, Knoxville, Tenn.; Dramatics Club '39, '40; Debating Club '39, '40; Latin Tournament '39; Home Ec. Club '40, '41; Hiking Club '40, '41; Latin Club '40, '42; Stunt Night '41.



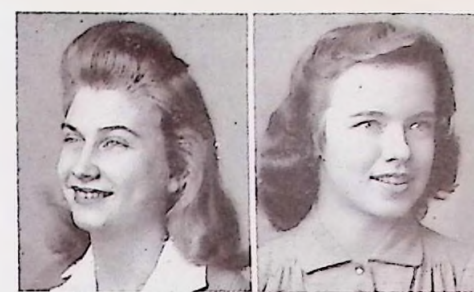
### GEARY REYNOLDS

Daughter of Mrs. Rupert Reynolds, 4602 Holston Drive, Knoxville, Tenn.; Park Junior; Amateur Hour '39; Minstrel '39; Parkette Staff: Glee Club; Operetta '39; Jr. Honor Society '38, '39; Transferred to Central '39; Jr. Honor Society '40; Senior Honor Society '41, '42; Girl Reserves '39, '40, '40; Sketch Club '40, '41; Dramatic Club '41, '42; May Day '41; Play "The Clod" High School Day '42.



### MARTHA LEE PEARMAN

Daughter of Mrs. Marie S. Pearman, Mascot, Tenn.; Junior Honor Society '39, '40; French Play '39; Latin Tournament '39; Hiking Club '39, '40, '41; Treasurer of Hiking Club '40, '41; Library Club '39, '40, '41; Treasurer Library Club '40, '41; Girl Reserves '40, '41, '42; President Senior Girl Reserves '42; Senior Honor Society '41, '42; Centralite Staff '40, '41, '42; Feature Editor Centralite '41, '42; Bowling Club '41; Stunt Night '41; Monitor '41, '42.



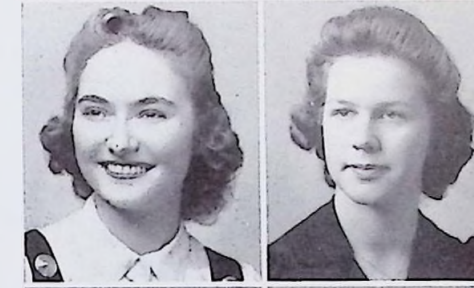
### DONALD P. VAN HOOZIER

Son of Mr. and Mrs. A. A. Van Hoozier, 321 E. Oklahoma Avenue, Knoxville, Tenn.; Christenberry Jr. High School; Musical Revue; Transferred to Central; Dramatic Club '39, '40, '41; Debating Club '39, '40, '41; Variety Show '41; Junior Honor Society '39, '40, '41; "The Pampered Darling" '41; Centralite Staff '41, '42; High School Play '40; Are We Dressing? '41. President Dramatics Club '39, '40, '41; President Debating Club '40, '41.



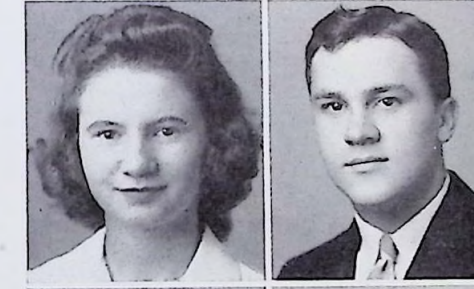
### CORA POSTON

Daughter of Mr. and Mrs. J. F. Poston, Route 5, Knoxville, Tenn.; Junior Honor Society '40; Senior Honor Society '41, '42; F.B.L.A. Club '41, '42; Girl Reserves '41, '42.



### E. H. VINEYARD

Son of Mr. and Mrs. E. H. Vineyard, 223 Jackson Avenue, Fountain City, Tenn.



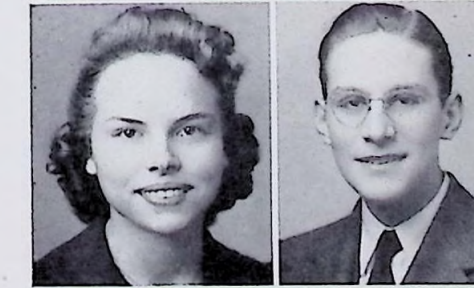
### JANE RANKIN

Daughter of Mr. and Mrs. H. S. Rankin, 102 Adair Drive, Fountain City, Tenn.; Transferred from Norris '39; Girl Reserves '39; Dramatics Club '39, '40; Debating Club '39, '40; Transferred to Virginia Intermont College '40; Dramatics Club '40, '41; Girl Reserves '40, '41; Transferred to Central '41; Bowling Club '41, '42.



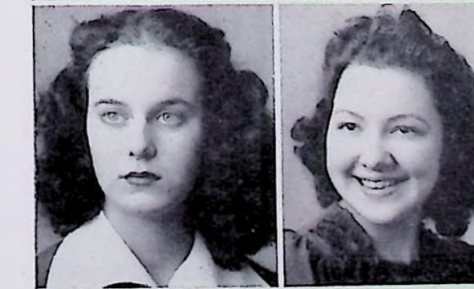
### DENNIS WALDROP

Son of Mr. and Mrs. J. A. Waldrop, 21 Rennac Road, Fountain City, Tenn.; President of Freshman Class '38, '39; Junior Honor Society '39, '40, '41; Senior Honor Society '41, '42; Latin Club '41, '42; Dramatics Club '41, '42; Monitor '41, '42; Central Staff '41, '42; Stunt Night '41; Latin Tournament '39, '40, '41; Sack-Ty Club '41, '42.



### BETTY RUCKEL

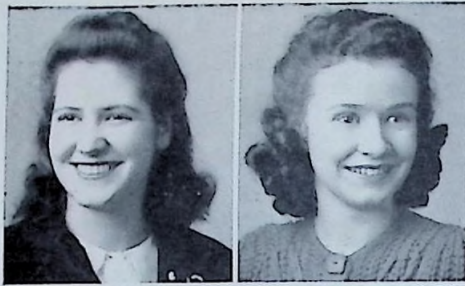
Daughter of Mr. and Mrs. C. A. Ruckel, 430 Woodrow Avenue, Fountain City, Tenn.; Home Ec. Club '38, '39; Variety Show '38; Dramatics Tournament at Asheville '40; High School Day '41; Dramatics Club '39, '40, '41; Big Revue '39; May Day '38, '40; Girl Reserves '39, '40, '41; Minstrel '41; Victory Program '41; National Drama Conference, Bloomington, Indiana, '41; Debating Club '37, '40; Commercial Club '41, '42.





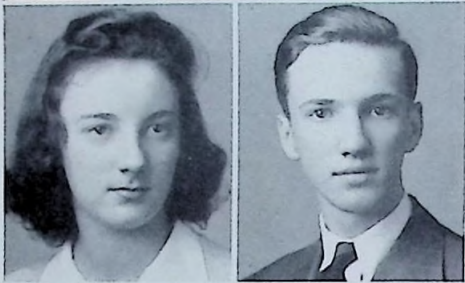
### MARY JANE SEAL

Ward of Mr. and Mrs. J. R. Garrison, 409 Second Avenue, Fountain City, Tenn.; Girl Reserves '39, '40, '41; May Day '41; Freshman Night '41; Stunt Night '41; Treasurer of Girl Reserves '41; Variety Show '38, '39; Bowling Club '41, '42.



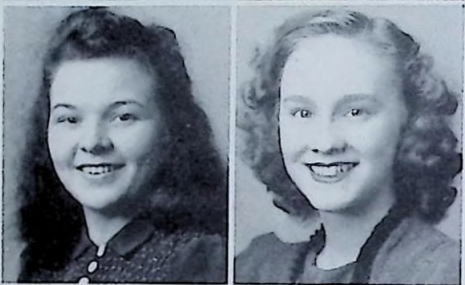
### MARY MARGARET SHEETS

Daughter of C. M. Sheets, 2123 Lawson Street, Knoxville, Tenn.; Transferred from Christenberry '39; Variety Show '39; Central '40; Glee Club '40, '41; Girl Reserves '41; F.B.L.A. Club '42; Bowling Club '41, '42.



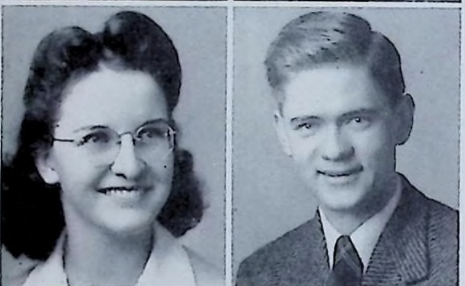
### HETTIE LORAIN SHIPLEY

Daughter of Mr. and Mrs. R. C. Shipley, "A" Street, Fountain City, Tenn.; Commercial Club '42.



### INEZ SMITH

Daughter of Mr. and Mrs. E. M. Smith, 309 Sanders Lane, Fountain City, Tenn.; Minstrel '40; Patriotic Pageant '41; Glee Club '39, '40; Girl Reserves '39, '40, '41, '42; Treasurer of Commercial Club '41, '42; Cheerleader '40, '41, '42; Centralite Staff '41, '42; Secretary Senior Class '41, '42.



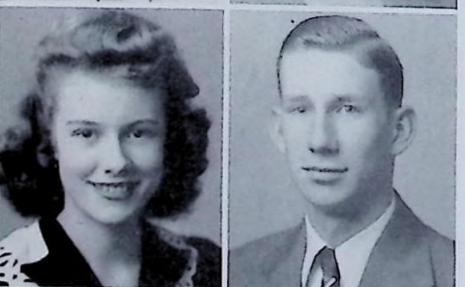
### MARTHA NELL SOLOMON

Daughter of Mr. and Mrs. C. C. Solomon, 8935 North Broadway, Fountain City, Tenn.; Home Ec. Club '38, '39, '40; Girl Reserves '39, '40; Monitor '40, '41, '42; Commercial Club '40, '41, '42; Bowling Club '41, '42.



### BILLIE STANSBERRY

Daughter of Mr. and Mrs. C. E. Stansberry, 2401 East Glenwood Avenue, Knoxville, Tenn.; Park Junior High School '38; Monitor '38; Glee Club '38; Girl Reserves '38; At Knoxville High School; Latin Club '39; Girl Reserves '39; Transferred to Central High School '40; Commercial Club '41, '42; Girl Reserves '41, '42.



### MARGARET ANN STEWART

Daughter of Mr. and Mrs. J. H. Stewart, 224 East Sixth Avenue, Fountain City, Tenn.; Major Bowe's Program '38, '39; Variety Show '40, '41; Freshman Midway '39; Minstrel Show '39, '40, '41, '42; Glee Club '39, '40, '41, '42; Stunt Night '41, '42; Glee Club High School Day at U. T. '41, '42; Glee Club Concert '40, '41; May Day '39, '40, '41, '42.



### KATHERINE SEAY

Daughter of Lucy H. Seay, Route 6, Washington Pike, Knoxville, Tenn.; Junior Honor Society '39, '40; Senior Honor Society '41, '42; Office Monitor '41, '42; Variety Program '41.

### JOHN PHILIP WAMPLER

Son of Mr. W. E. Wampler, Mascot, Tenn.; Latin Tournament '38, '39; Hiking Club '39, '40, '41; Debating Club '39, '40; Chemistry Club '40, '41; President Sack-Ty '41; Stunt Night '41; Minstrel '42; Hi-Y '41, '42.

### BEULAH SINKHORN

Daughter of Mr. and Mrs. H. D. Slagg, Route 2, Cedar Lane, Knoxville, Tenn.; Sketch Club '41, '42.

### RALPH WARREN

Son of Mr. and Mrs. George S. Warren, 310 Jackson Avenue, Fountain City, Tenn.; At Central '38, '39; Transferred to Gibbs High, '40; Returned to Central '41, '42; Basketball '38, '39.

### WANDA SWAGGERTY

Daughter of Mr. and Mrs. J. E. Swaggerty, Inskip, Tenn.; Glee Club '39, '40, '41; Dramatics Club '39, '40; Minstrel '41; Freshman Carnival '40; Girl Reserves '39, '40.

### RAY EDWARD WATSON

Son of Mr. and Mrs. V. I. Watson, 604 Maple Avenue, Fountain City, Tenn.; Band '39, '40, '41.

### CHARLOTTE ANN STOFFELL

Daughter of Mr. and Mrs. J. N. Stoffell, 216 East Sixth Avenue, Fountain City, Tenn.; Glee Club '39, '40, '41, '42; Glee Club Concert '40; Chemistry Club '40, '41; U. T. High School Day '40; Monitor '41, '42; May Day '39, '40; Dramatic Club '41; Debating Club '41.

### VELLA SUGGS

Daughter of Mr. and Mrs. E. D. Suggs, Rutledge Pike, Knoxville, Tenn.; May Day '39, '40; Girl Reserves '40, '41, '42; F.B.L.A. Club '41, '42; Camera Club '41, '42.

### KAREN TAYLOR

Daughter of Mr. and Mrs. R. Brooks Taylor, 400 Highland Drive, Fountain City, Tenn.; Junior Honor Society; Senior Honor Society; Glee Club '39, '40; Girl Reserves '39, '40, '41; Chemistry Club '41; Sketch Club '41, '42; Hiking Club '39, '40, '41; Centralite Staff '40, '41, '42; Monitor '41; Minstrel '40; May Day Maid '41; Bowling Club '41, '42; District Latin Tournament '39, '40, '41; Second Place in District Latin Tournament '41; State Latin Tournament '39, '40, '41; Representative of Glee Club at Johnson City '40.

### MARY TINDELL

Daughter of Mr. and Mrs. Frank Tindell, Route 12, Knoxville, Tenn.

### MARY ANN TIPTON

Daughter of Mr. and Mrs. J. W. Tipton, 536 Tazewell Pike, Knoxville, Tenn.

### MARY ANN THORNTON

Daughter of Mr. and Mrs. D. T. Thornton, Hotel Ave., Fountain City, Tenn.; Treasurer of Home Ec. Club '38, '39; Recording Secretary of Home Ec. Club '39, '40; May Day '39, '40; Style Show '41; Treasurer of Sophomore Girl Reserves '39, '40; Social Chairman of Junior Girl Reserves '40; President of Senior Girl Reserves '41; Bowling Club '41, '42; Camera Club '41, '42; Centralite Staff '41, '42; Minstrel '39, '40; Monitor '41, '42; Stunt Night '41.

### MARY LOU VITTEOE

Daughter of Mr. and Mrs. C. A. Major, 108 'A' Street, Fountain City, Tenn.; Junior Honor Society '39, '40.

### KATHLEEN VAN STORY

Daughter of Mr. and Mrs. W. F. Van Story, Route 2, Fountain City, Tenn.; Glee Club '38, '39, '40, '41; Minstrel '41.

### JUNE TALLEY

Daughter of Mr. and Mrs. E. L. Talley, Rutledge Pike, Route 5, Knoxville, Tenn.; Junior Honor Society '39, '40; Home Ec. Club '40, '41; Latin Tournament '40, '41; Senior Honor Society '41, '42; Stunt Night '41; Commercial Club '41, '42.

### ROY A. WEDEKIND

Son of Mr. and Mrs. R. A. Wedekind, Harrell Hills, Fountain City, Tenn.; Band '38, '39, '40, '41, '42; Sergeant '41, '42; Orchestra '41; Hiking Club '40, '41, '42; Junior Honor Society '39, '40; Hi-Y '40, '41, '42; Chemistry Club '40, '41; Stunt Night '41; Band Clinic at Maryville '42; Hi-Y Convention at Nashville '42.

### DOROTHY LOUISE THOMAS

Daughter of Mr. and Mrs. C. W. Thomas, Oxford Street, Fountain City, Tenn.; Home Ec. Club '38, '39; Band '40, '41, '42; Orchestra '41, '42; Minstrel '38; Glee Club '39.

### JOHN A. WELMERS

Son of Mr. and Mrs. John Welmers, Crestwood Drive, Fountain City, Tenn.; Minstrel '39; Hiking Club '40; E.T.E.A. Orchestra '40; Chemistry Club '41; Stunt Night '41; Band Clinic, Maryville, Tenn.; Orchestra '39, '40, '41; Band '39, '40, '41, '42; Band Captain '41, '42.

### RUTH TURNER

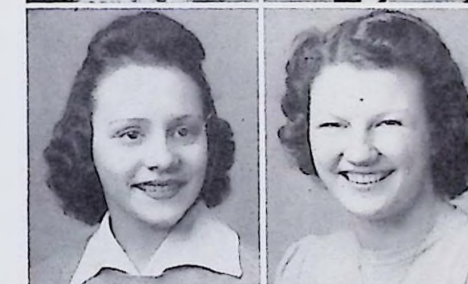
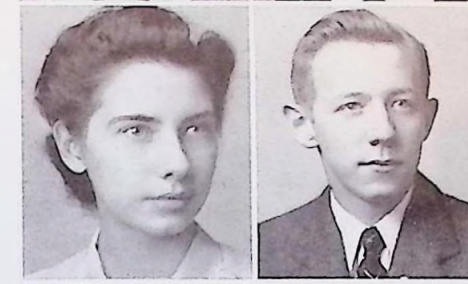
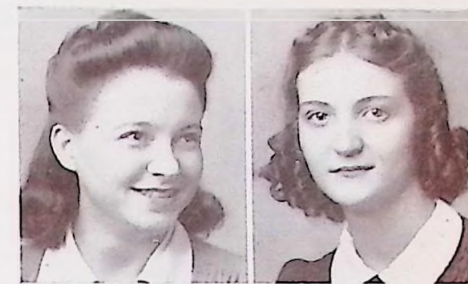
Daughter of Mr. and Mrs. J. H. Turner, 329 Hiwassee Ave., Knoxville, Tenn.; Girl Reserves '40, '41; Commercial Club '41, '42; Centralite Staff '41, '42; Style Show '39, '40, '41, '42.

### GLENN WELLS

Son of Mrs. Minnie Wells, Route 2, Fountain City, Tenn.; Monitor '38, '39; Safety Patrol '40, '41, '41; 4-H Club '36 to '42; F.F.A. '39, '40, '41, '42; Football '41; Basketball '39.

### BONNIE MAE WARD

Daughter of Mrs. R. S. Moyes, 308 Seventh Avenue, Fountain City, Tenn.; Girl Reserves '38, '39; Chemistry Club '40, '41; Commercial Club '41, '42.





## SARA LOUISE WATROUS

Daughter of B. A. Watrous, West Adair Drive, Fountain City, Tenn.; Everett High School, Maryville, Tenn.; Glee Club '38, '39; "Black Eyed Susan" '39; Commencement Exercises '39; "Harvest Moon" Carnival '39; Transferred to Central '39; May Day '40; '41; Minstrel '41, '42; Variety Show '40; Stunt Night '41; Girl Reserves '39, '40, '41, '42; Placed in French Tournament '41; High School Day '41; Glee Club '40, '41, '42; Glee Club Concert '41.

## MARY LOU WATSON

Daughter of Mr. and Mrs. H. Victor Watson, 203 Jackson Avenue, Fountain City, Tenn.; Girl Reserves '38, '39, '40; Variety Show '39, '40; Minstrel '38, '40, '41; Stunt Night '41; Glee Club '40, '41; Representative Glee High School Day '40; Representative Home Economics Department High School Day '39; E.T.E.A. Chorus '41; Christmas program of Glee Club WROL '40; Glee Club Representative WBIR and WNOX '41; Glee Club Representative S and W '40, '41; Representative Central Home Ec Department at Miller's Style Show '40; May Day '40.

## MARGARET E. WELCH

Daughter of Mrs. Julian Welch, Route 5, Rutledge Pike, Knoxville, Tenn.; transferred to Central from Knoxville High '40; Knoxville; Girl Reserves '39, '40; Monitor Squad '39, '40; Library Club '39, '40; Central Senior Girl Reserves '41, '42; Camera Club '41, '42; Bowling Club '41, '42.

## MARIE HELLEN WILKERSON

Daughter of Mr. and Mrs. M. S. Wilkerson, Route 6, Knoxville, Tenn.

## EDNA CHURCHILL WHITE

Daughter of Mr. and Mrs. T. H. Haynes, 110 W. Gill Street, Knoxville, Tenn.; Christenberry Jr. High '37, '38; Home Ec Play; Monitor; Civics Club; Transferred to Central '39; Home Ec Club '39, '40, '41; Debating Club '41, '42; Dramatics Club '41, '42.

## IONE WISHART

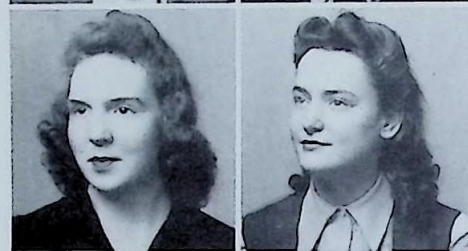
Daughter of Rev. and Mrs. I. E. Wishart, Cross Valley Road, Knoxville, Tenn.; Transferred from Knoxville High '39; Secretary of Dramatics Club '41, '42; Centralite Staff '40, '41.

## ADA YADON

Daughter of Mr. and Mrs. Clyde Cole, Route 12, Knoxville, Tenn.; Commercial Club '41, '42; Monitor '41, '42.

## LEWIS YODER

Son of Mr. and Mrs. L. L. Yoder, 821 Hiawussee Avenue, Knoxville, Tenn.; Chemistry Club '38, '39.



## JEAN WATSON

Daughter of Mrs. S. Grant Watson, 119 West Massachusetts Avenue, Knoxville, Tenn.; Rule High School; Latin Club '39; Service Club '40; Group Reporter '40; Monitor '40; Honor Society '40, '41; Monitor '41; Demonstration '41; Transferred to Central '41; Sketch Club '41, '42.

## BILL YAMBERT

Son of Mr. and Mrs. D. W. Yambert, 203 Templeton Avenue, Fountain City, Tenn.; Band '38, '39, '40, '40, '41; Corporal '40, '41; First Lieutenant '41, '42; Junior Honor Society '39, '40; Senior Honor Society '41, '42; Hi-Y '40, '41, '42; Secretary of Hi-Y '41, '42; President of Chemistry Club '41; Hiking Club '40, '41, '42; President of Hiking Club '41, '42; State Band Clinic '42; Variety Show '38; Stunt Night '41; Vice President of Senior Class '41, '42.

## CHARLENE WHITE

Daughter of Mrs. Oma Lee White, 2900 Washington Pike, Knoxville, Tenn.; Transferred from Smoky Mountain Academy in '40; Hiking Club '41, '42; Monitor '41, '42; Minstrel Show '40, '41; Chemistry Club '40, '41.

## FRANK A. WYLIE

Son of Mr. and Mrs. Frank Wylie, 129 Fountain Avenue, Fountain City, Tenn.; Carnival '38; Band '39, '40, '41, '42; Band Sergeant '41, '42; National Band Contest at Richmond, Va., '41; Hi-Y '40, '41, '42; Social Chairman '41, '42; Sacki-Ty Club '41, '42; Vice President of Sacki Ty Club '41; Centralite Staff '41, '42; Business Manager of Centralite '41, '42; Stunt Night '41.

## EMMALEE WINEGAR

Daughter of Mr. and Mrs. A. J. Winegar, 313 Garden Avenue, Fountain City, Tenn.; Home Ec. Club '38, '39, '41; Commercial Club '40, '41, '42; Stunt Night '41; Patriotic Pageant '41.

## JOHN WINKLE

Son of Mr. and Mrs. C. J. Winkle, Route 1, Fountain City, Tenn.

## ELIZABETH L. YADON

Daughter of Mr. and Mrs. J. L. Yadon, Route 12, Knoxville, Tenn.; Junior Honor Society '39, '40; Sketch Club '42; Minstrel '40; Senior Honor Society '42; Latin Tournament '39.

# Class Will

We, the class of '42 of Central High School in Fountain City, Tennessee, being of sound and disposing mind and memory, do hereby make, publish, and declare the following as and for our last Will and Testament:

I, Asa Ambrister, pompously and gloriously do hereby give, devise, and bequeath my power of oratory to any one of the many students who have admired my self-possession and my clear tones from the chapel platform.

I, Dennis Waldrop, being of sound mind and body do bequeath unto Bob Hethmon my sadly worn book satchel.

I, Evelyn Caul, in this my last will and testament do give unto Ellen Stedman my luscious long, red finger nails.

I, Joe McTeer, being of sound (?) mind do bequeath my hearty appetite unto Ruth Caldwell.

I, Mary Hannah McMurray, do devise and bequeath my knowledge of American History to Bill Davis in order to help him in his senior year with Miss Hicks.

Know ye, by all these present, that I, Theodore Rutherford, of insane mind, do hereby devise and bequeath all my surplus good looks as well as dignity to my younger brother, Bill.

I, Jean Elizabeth Johnson, (being in my right mind), do hereby devise, give, and bequeath my good looks, melodious voice, and soft heart (now in possession of Jim Cobble) to Miss Betty Highbaugh.

I, Joe Smallman, bequeath my reputation as a book shark to David Block, on condition that he bear this title with dignity.

I, Glen Wells, being of sound mind and memory, do hereby bequeath to any undergraduate my habit of chewing gum, paper-wads, and toothpicks in class.

I, Mary Lou Watson, being sound of wit, and sound of body, do hereby bequeath my vivacious personality; also my three great accomplishments-to-wit, to dance, to sing, and to play—to my underclassmen whose soul ambition is to climb the social ladder of Central High.

I, Lena Kate Ailor, do hereby bequeath and devise my modesty and timidity to one in whom it is sadly lacking—namely Mary Margaret Martin.

I, Craig Grove, do hereby bequeath and devise, being in a generous state of mind, all my football ability to Mark Major.

I, Charlotte Berry, do bequeath to the pessimists of the Junior Class in this my last will and testament "Just a little smile."

I, Ruth Ford, do hereby bequeath unto Geneva Sherrod and her friends my ability to conduct myself with a dignified and unaffected manner in and about high school.

I, Bud Mynatt, being of sound mind and body, do hereby bequeath my undivided heart to Carolyn Cruze.

I, Kathleen Van Story, do solemnly give, devise, and bequeath my crown unto Carrie Belle Morris.

I, Charles Doughty, of sane mind and sound body do bequeath unto Bill Roberts my handsomeness and charming personality.

I, Weston Murrian, hereby do bequeath my title of "Lady Killer," and my over-stock of lady friends, to any needy Junior who may handle them as ably as I have done in the past year.

I, John Llewellyn, do hereby bequeath my patented hair tonic to any bone-headed Junior who is interested enough to ask for it.

I, Virginia Petree, feminist, do hereby give, devise, and bequeath four quarts of my famous rose-blush complexion

and the memory of my sunny smile to any underclassman who admired my complexion.

I, Claude Hobson, do hereby bequeath to one Fred Rule eight inches of my superfluous length, to be applied from time to time.

I, June Talley, bequeath my unexcelled marks in shorthand to any Junior who may be in need of them.

I, Roscoe Smith, do hereby devise and bequeath to any enterprising freshman my life lease on the Central High School; also my chances of ever convincing Miss Hicks that I know something about American History.

Know ye, by all present, that I, John Wampler, being in mind (?) and body sound, do hereby bequeath to the class of '43 my entire assortment of bow ties and striped socks.

I, the undersigned, herewith bequeath to those deficient in the Junior Class my vast vocabulary of incomprehensible words and immense intellectuality, also my good fellowship toward all men. Donald Van Hoozier.

I, Geary Reynolds, being of sound mind and legal age, do hereby give, devise, and bequeath my career as an actress in CHS to Mary Margaret Painter.

I, Morris Snow, being of sound body and mind, do hereby bequeath all my troubles that I have had with my studies to any underclassman who is having too good a time.

I, Charles Edington, do bequeath my ability to argue to Miss Jennings; may she use it sparingly.

I, Mary Pearl Gaut, do give and devise one pair of sky-blue eyes and one tooth pick to Leonard Carter.

I, Jabo Wylie, do give and bequeath my fifty-seven varieties of the very best slang to any Junior who lacks the ability to express himself.

I, Betty Huffaker, do hereby bequeath to some foolish Junior, who thinks it necessary to rush through life, my indifferent attitude toward everything under the sun.

I, Jack Atkins, being of sound body and mind, do bequeath my ability as guitar artist to Gene Grant.

We, Mary Lloyd Cunningham and Ford Owen, do solemnly give, devise, and bequeath our favorite table at Kay's to R. B. Burnett and Betty Cruze.

I, Bonnie Mae Ward, being of sound body and mind do hereby bequeath my collection of engagement rings to Lenore Caldwell.

I, Charles Hobby, being as strong in mind as I am in voice, gladly and earnestly give my interest in the Glee Club to Sam Shanton. May he use the gift to the best of his ability.

I, Barbara Clark, being sound of body and sane of mind do bequeath my Commencement Speech unto Sally Gray.

I, Ralph Stormer, being of sound mind and body do bequeath unto Wallace Whitehouse my favorite brand of hair cut, to wit: a "burr."

I, Tom Cartwright, bequeath my hobby of ladies' man to Melvyn Lady.

I, Aniece Kirby, in this my last will and testament do bequeath my special brand of smiles unto Lois Hahner.

I, Jim Strange, being mentally well balanced, do cheerfully submit unto Raymond Babelay for safe keeping, my winning ways, my spectacles, and my "burr."

I, Paul Pless, do hereby give and bequeath all my possessions including the toys Mr. Petree took from me to any student who is worthy of them.

I, Hettie Shipley, give in this my last will and testament, my utter disregard of men to Ann Morris.



# Class Will

I, Wilson Hutchinson, leave my French grades to Sumner Dow whom we leave to the Class of '49 if they'll have him.  
We, Rubyl Hale, Charlene White, Lois Fair, Pearl Dalton, and Marie Lewis, do bequeath our willing, quiet natures to Anna Ruth Fraker, and Freddie Lou Easterly.  
We, Fred Metts and Dan Morgan, endow our shyness upon Herbert Mynatt.  
I, Betty Jo Powers, leave my violin to Elizabeth Gresh-nam.

We, Pauline Minton, Cara Poston, and Katherine Seay, leave our Honor Society Pins to Edward Minton, Charles Lowe, and Boyd Capps.

I, Joe Murray, do leave my curly hair to Fern Nicely.  
I, Fred Shanton, bequeath my numerous freckles to Ned Irwin.

I, Mary Elizabeth Cole, do bequeath my fresh, un-adulterated beauty to Betty Lee Irwin.

I, Bill Storey do bequeath my back seat driving to Sonny Baker.

We, Mary Seal, Edna Berney, Louise Burnette, and Marie Lett, do bequeath our love of the beautiful to anyone who feels the need of it.

We, J. L. Powell, Lewis Yoder, John Winkle, and Clarence Bracken, hereby leave our happy outlook on life to Jim Grove.

We, Avery Capps, Charlotte Stoffell, Vella Suggs, and Avanel McCartt, will our dirndell skirts to the thinnest people we can find.

We, Ray Watson, Jimmy Elliott, Harry Elliott, and Claude Schaad, hereby bequeath our seats in chapel to four of next year's most promising Seniors.

I, Jean Watson, leave my diamond ring to Rae Livingston.

I, Bill Bozeman, do bequeath my oversized ears to Bill O'Conner.

I, James Heatherly, will my scarf to Ruben Kempton.

We, Elizabeth Petree, Wilma Reed, Dorothy Thomas, and Edna White, leave our place in front of the dressing room mirror to four vain Juniors.

We, Ralph Price, Bruce Reed, James Russell, and Harold Tarver, being sound of mind and body, hereby bequeath our place in the lunch line to the first four freshmen in the school.

I, Harold Keene, leave my safety patrol flag to Alvin Elliott.

I, Bill Scanlon, donate my way with the women to J. D. Underwood.

I, Judd Smith, leave my carefree car driving to David Grove.

I, Margaret Fogarty, bequeath my "blues singing" to Verna Proffitt.

I, Hazel Gentry, will my books to Sophia Pratt.

I, Frances Holdredge, bequeath my ability of evading the issue to Josephine Sterling.

I, Barton Jones, hereby bequeath my 100's in physics to Kenneth Shipman.

I, Patty Hoebner, hereby give, devise and bequeath my characteristic gestures to any poor soul who can understand them.

I, Frances Lovingood, leave my sax to Dot Evans.

I, Virginia Osment, hereby bequeath my lovely angora sweaters unto De Wilda Myer.

I, "Jew" Smith, leave all my affections to Betty Wylie.

I, Eunice Block, in one of my weak moments, give and bequeath my perfectly filthy moccasins unto Nancy Johnson.

We, Jean Cobble, and Jean Leinart, leave our major-ette boots to our worthy (?) successors.

I, Bobby June Hollingsworth, leave all my interests in the army, with the exception of Jack, to Peggy Smith.

I, Carl Nelson, bequeath my striking blonde handsomeness unto Columbus.

Pun: I love my wife but "Oh, Hugh Kilts!" (How did that get in here?)

I, Kelly Lynch, leave my bashfulness to R. B. Burnette.

I, Zoe Jeffers, do will my retiring nature to Nancy King.

I, Mildred Keesling, will fifteen pounds of my avoirdupois to June Morris.

I, Bill Quigg, leave my good naturedness to Melvyn Lady.

I, Gilbert Tipton, bequeath my mustache and my pipe unto Carl Morris.

I, Rebecca Irwin hereby give my disposition to Lucy Mitchell.

I, Lloyd Best, in perfect saneness hereby bequeath my great big convertible unto Kenneth Chapman.

I, Alice Karnes, hereby bequeath my neatness unto Ann Henson.

I, Rosemary Johnson, begrudgingly bequeath my tennis unto Alvin Murphy who is sadly in need of it.

I, Irene Kempton, leave my jitterbug to Jean Marcus.

I, Harold Godfrey, leave my loud mouth to Claudia Smith.

I, Frances Mathis, in all seriousness, leave my heart-aches to Harriet Ann Savage.

We, Barbara Baldock, Ruth Turner, and Cecile Hall, bequeath our innocent chuminess unto Gloria June Deaver, Betty Jane Julian, and Sarah Mac Shirley.

I, Joe Lay, being of a frivolous state of mind, do leave my graceful dancing unto Bud Zoller.

We, Martha Parker, Beulah Sinkhorn, Billie Stansberry, Marie Wilkerson, Juanita Harris, and Frances Metts, graciously bequeath our blonde hair to Paul Hodges.

I, Bill Perry leave my chewing gum to Mr. Rose's fourth period English class.

I, Louise Boring, do leave my love of football players to Barbara Schmid.

I, Emalee Winegar, do leave my tin cups used in Stunt Night in locker 190 for any thirsty person.

We, Ada and Elizabeth Yadon, bequeath our brains unto Clifford Hunley.

I, Bill Daniels, being of sound body and mind do be-queath my well known meekness unto Herman Fisher.

I, Mary Ann Thornton, hereby give, devise, and bequeath my lovely vivaciousness unto Wilma Rogers.

I, Ralph Warren, hereby bequeath my pipe unto Sara Murphy.

I, Elbert Marguerat, leave my peculiar name unto Ray Cate.

I, Sara Watrous, in this my last will and testament, leave my beautiful voice unto Betty Chance.

I, David Highbaugh, in a quiet mood leave my raging temper to Mary Gilbert Eppes.

I, Ateka Morris bequeath my ever lasting daintiness to Phyllis Large.

I, Jimmy Edmondson, give my monitor chair in the annex to James Zirkle that he might sleep in peace.

# Class Will

I, Mac Lovingood, generously bequeath my southern drawl unto Alice Hollyfield.

I, Martha Lee Pearman, hereby give and bequeath my English books, and my locker unto Bill Zachary.

I, Bobby Sandmann, bequeath my good sportsmanship unto Ruby Hansard.

I, Ray Towle, after five long years bequeath my baton unto Stewart McCorkle.

I, Betty Hicks, cheerfully leave my Who's Who column to Margaret Giffin.

I, Charlsie Hobby, in one of my sane moments leave my deep voice to Lula May Myers.

I, John Welmers, never in a sane mood, will my band captaincy to whoever is smart enough to get it.

I, Polly Leinart, in all seriousness, leave myself to Leonard Fulford.

I, Margaret Stewart, in this my last will and testament do give, devise, and bequeath my basketball goals to Collette Hill.

I, Ione Wishart, do give my ability of keeping my man to any lonesome underclassman.

I, Juanita McCloud, hereby bequeath my upswept hair-do to any straggly headed Junior who is sadly in need of it.

I, Frederick Taylor, being of sound body and sane mind, hereby bequeath my suspenders unto — oh, maybe I shouldn't do that.

I, Barbara Gibbs, do bequeath my gentle temper and pleasing ways unto that pickle-faced Junior who sits across the aisle in study hall.

I, Agnes Currier, hereby give, devise, and bequeath my industrious nature to Barbara Machamer.

I, Inez Smith, insane as usual do in one of my weaker moments give Walter Taylor unto Mary Ann White.

I, Wendol Ogg, bequeath my boxing prowess unto Billy Frost.

We, Jo Banker, Helen O'Dell, and Martha Nell Solomon, bequeath our common love for skating to Mary Arthur.

I, Clover Brown, in this my last will and teastment be-queath my timidity unto Frances Bishop.

I, Roy Wedekind, calmly bequeath my generous love for snakes unto Miss Myers.

I, Marie Duncan, leave my engagement ring to Mary Elizabeth Bell.

I, Eleanor Hall, leave my rare dependability to Lena Kate Doughty.

I, Carl Hubbs, bequeath at least two feet of my height to Betty June Rose.

I, Karen Taylor, being of sane mind, generously do be-queath my peculiarities unto Faye England.

I, Willie Mae Mathews, leave my lunch money to my 'kid' sister, Marjorie.

I, Glenn Wilson, do leave my football honors to baby brother, Gaylon.

I, Lynn McCloud, do bequeath my circulation route on the Centralite Staff to John Hahn.

I, R. C. Major, do (with much pleasure) will my broken collar bone to next year's K H S star football player.

I, Betty Grubb, will my sweet disposition to Maxine Stipes.

I, Freda Fields, willingly bequeath my poor eyesight to Sue Ella Vaughn.

I, Betty Fair, donate my interest in James Zirkle to Fara-dina Hargis.

I, Hayne Blakely, do bequeath my laziness to Bill Carter (as if he needed it).

We, the Hamilton Twins, leave our harmonious voices to Estha Brukin and Maxie Hubbs.

I, Betty Couch, will my poetry reading to O. C. Arms.

I, C. B. Clark, bequeath my palette and brush to Bill Mauk.

I, Buddy (George) Evans, leave my imitation of Red Skelton to any one who would like it.

We, Lucille Bayless, Marie Northern, Mary Lou Vittetoe, and Mary Etta Burkhardt, leave our red hair to Martha Felknor.

I, John Fitch, bequeath my clicking heels to David Smith.

We, Mary Catherine Brown, and Kathleen Brown, do be-queath our unusual names to W. M. Vandergriff and Richard Bohannon.

I, Joe Fielden, being of legal age, give my stubbornness to Evelyn Sisk.

I, Bill Yambert, being of sane mind and sound body do hereby bequeath my good sportsmanship and rare popu-larity to Grady Renfro.

I, Betty Ruckel, do give, devise, and bequeath my dra-matic reading "Mary Stuart" unto Kat Mahan.

I, Iris Faulkner, being of sound mind and body do give my beautiful raven locks to Sarah Wedekind.

I, LeRoy Ogle, do hereby give, devise and bequeath my unusual habits of promptness (?) to any unsuspecting Junior who feels in need of them.

I, Margaret Moneyhun, do bequeath the remainder of my prissiness and rolling eyes to Eloise Huff who is fast ac-quiring them.

I, Earl Acuff, in this my last will and testament with great happiness do bequeath unto Dot Osmun my appendix.

I, Mary Eleanor Jones, being of sane mind and sound body graciously do bequeath my flair for piano playing un-to Mary Jo Bolin.

I, Margaret Welch, being of sane mind and sound body do bequeath unto Martha Felknor my short skirts.

I, J. C. Turner, being of sane mind and sound body (and how) do hereby bequeath my fine intellect and mathe-matical.

I, Jane Rankin, in this my last will, do gladly give to Jeanette Deane my soft voice, with the request that she use it in the typing room.

I, Jessie Ruth Newman, hereby bequeath my tomboyish-ness unto Betty Tarver.

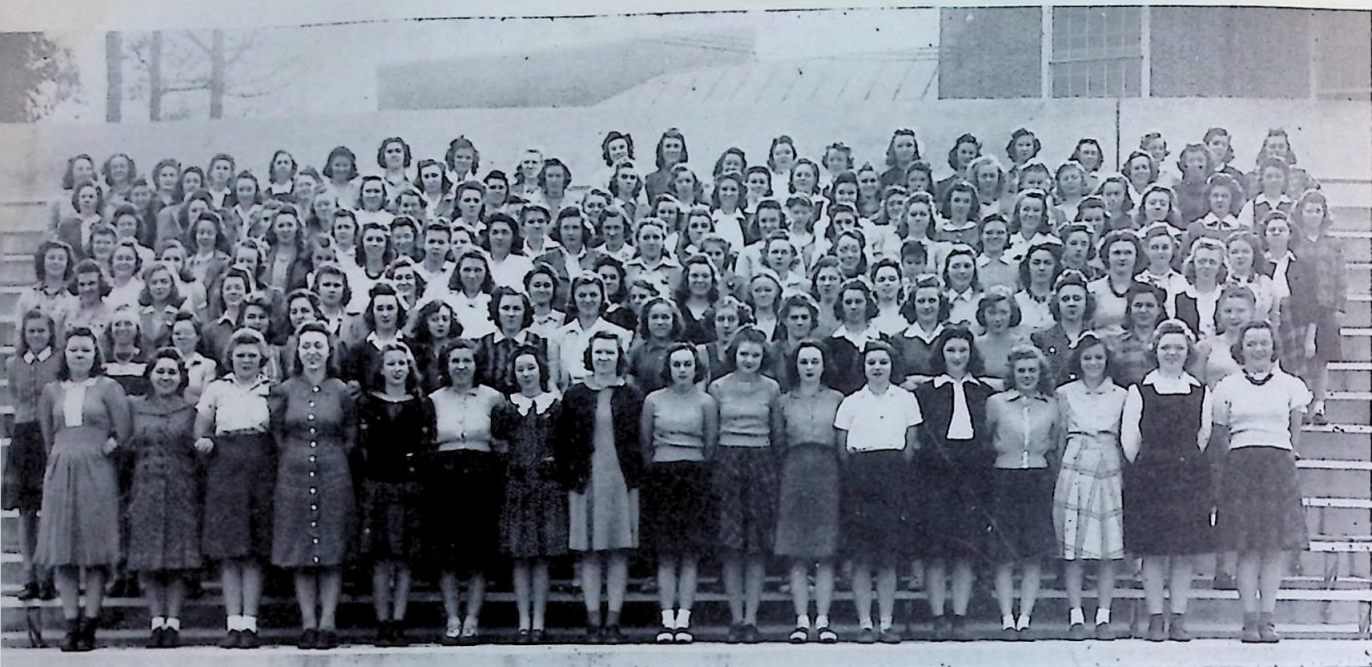
I, Doug Bailey, unselfishly give, devise, and bequeath my winning way with Miss Brickey to Tom Dyer.

In witness whereof, we have hereunto set our hands and seal on this twenty-sixth day of May, in the year of our Lord one thousand nine hundred forty-two.

Witnesses:

Patty Hoebner  
Martha Lee Pearman  
Jean Cobble  
Eunice Block





## Junior Class

MARY MARGARET PAINTER ..... President  
STEWART McCORKLE ..... Vice-President

Dell Allen	Ella Mae Dawson	Helen Hendrix	Lucy Mitchell	Ruby Shearl
Ruth Allen	Catherine Davis	Betty Highbaugh	Mary Monday	Geneva Sherrad
Dorothy Anderson	Jeanette Dean	Marie Hill	Anne Elizabeth Moore	Claudia Smith
Willadean Anderson	Goria June Deaver	Maxie Hubbs	Doris Moore	Sarah Mae Shirley
Lois Arnwine	Loretta DeWine	Lois Anne Hahner	Carrie Bell Morris	Evelyn Sisk
Mary Arthur	Iena Kat Daughly	June Jarnagin	Jene Morris	Ellen Steadman
Mary Frances Barry	Alice Mae Dowling	Nancy Johnson	Sarah Murphy	Josephine Sterling
Rowena Ball	Lucille Dunkle	Mary Elizabeth Jones	Lula Mae Myers	Betty Stewart
Helen Bell	Elaine Douglas	Joyce Irick	Christine Myers	Maxine Stipes
Wanda Beal	Freddie Lou Easterly	Bobbye Lynn Kelly	Fern Nicely	Katherine Snyder
Mary Elizabeth Bell	Agnes Ellis	Nancy King	Erma Lee Norris	Jane Spear
Frances Bishop	Faye England	Betty Jane Julian	Louise Ogle	Thelma Sowder
Mary Jo Bolin	Mary Gilbert Eppes	Alice Hallifield	Dorothy Osmun	Betsy Tarver
Ruth Brayles	Elizabeth Evans	Frances Large	Mary Margaret Painter	Dorothy Tolson
Estha Bruhin	Mary Katherine Evans	Phyllis Large	Martha Palmer	Sue Ella Vaughn
Gladys Buchanan	Dorothy Evans	Blanche Lawson	Mildred Elizabeth Perry	Jean Vise
Mary Elizabeth Burkhart	Helen Faulkner	Clara Lawson	Mary Louise Paschal	Doris Walker
Ruby Burgess	Martha Felkner	Hazel Lett	Jackie Perdue	Joan Warwick
Tressie Bunch	Mary Fine	Beatrice Little	Betty Pratt	Louise Warwick
Fay Burchette	Anna Ruth Fraker	Edna Mae Little	Sophia Pratt	Mildred Watson
Mildred Bowman	Cecil Gault	Kathleen Lomas	Nancy Prevost	Dorothy Webb
Fay Brown	Anna George	Joyce Long	Verna Proffitt	Hazel Webster
Lenore Caldwell	Juanita Gibbs	Rae Livingood	Juanita Pruett	Barbara Wells
Ruth Caldwell	Nancy Gilmer	Barbara Machamer	Dorothy Price	Sarah Wedekind
Maureen Chadwick	Sally Gray	Katherine Mahan	Margaret Ramsey	Marie Whedbee
Betty Chance	Mary Jo Hackney	Jennie Mallib	Jeanette Reed	Mary Anne White
Henrietta Childress	Helen Hale	Jean Marcus	Ethel Rochat	Bernice Williams
Sammye Collins	Ruby Hansard	Nellie Mae Maples	Wilma Rogers	Deane Williams
Prudence Corum	Sara Ruth Hansard	Mary Margaret Martin	Hannah Jane Russell	Mary Anne Williams
Betty Cruze	Ethel Harbin	Helen Massengill	Harriet Anne Savage	Geneva Wood
Audrey Braden	Andeen Harris	De Wilda Meyer	Betty Rose Schmid	Betty Wylie
Olive Dailey	Anne Henson	Mildred Miller	Mary Evelyn Shearl	Betty Kate Yardley

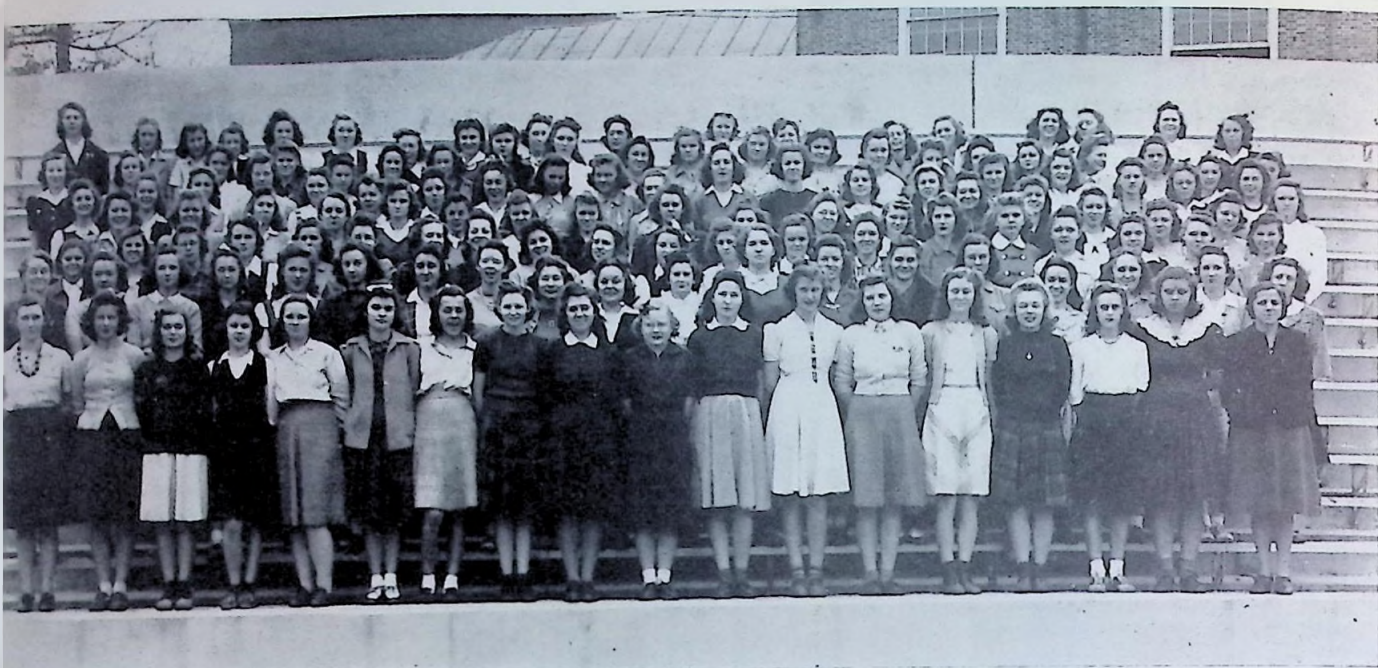


NANCY KING ..... Secretary  
MARY ELIZABETH BELL ..... Treasurer

## Junior Class

V. C. Adcock	Wallace Cluck	Ned Irwin	Jack Moore	W. M. Vandergriff
Carlyle Alexander	Bob Cunningham	Robert Jones	Alvin Murphy	Ralph Vise
John Anderson	Paul Cunningham	Robert Lee Jarrigan	Herbert Mynatt	E. C. Walker
O. C. Arms	E. W. Brown	Arthur Johnson	Edward Minton	Howard Webster
Duane Armstrong	Bill Davis	Roland Keezel	Bill O'Connor	Cecil Wells
John Alchley	Don Dyer	Eugene King	Carl Morris	Millard White
Milburn Atkins	Tom Dyer	Billy Kirby	Garrette Parker	Wallace Whitehouse
Ralph Armstrong	L. H. Dalton	Leon King	Kenneth Phillips	Charles Williams
Raymond Babelay	Bill Carter	Andy Kilts	James Picquet	Edd Williams
Sonny Baker	Melvin Cowan	Jack Lakin	Robert Rankin	Lester Williams
George Barnes	Clyde East	Melvyn Lady	Grady Renfro	M. M. Winkle
Frank Berney	Ralph Elkins	Paul Learn	Luther Rickells	Jack White
Oscar Bean	Ross Everett	Don Lett	Bill Roberts	Kenneth Woods
David Black	Jack Falin	Charles Lowe	Fred Rule	Billy Woods
Ralph Bounds	Herman Fisher	Carl Loy	Harold Sandberg	Henry Wilson
Otis Brooks	Leonard Fulford	Bobby Luttrell	S. E. Satterfield	James Zircle
Edward Brandon	Bill Gayton	Victor Luster	William Sharp	Buddy Zoller
Billy Broome	Albert Goins	Herbert Harris	Ralph Sheffer	Harold Whittle
R. B. Burnett	Eugene Grant	Stewart McCorkle	Fred Sherrad	Carl Brown
W. D. Burnett	Herron Hall Gresham	Rhea McFarland	Kenneth Shipman	Hubert Foster
Jie Beatty	Glenn Gilliland	Homer McGhee	David Shirley	Billy Frost
A. J. Bowling	John Henry Hahn	James McMillan	Ralph Simpson	Freelan Goddard
Bob Cable	Carl Hammond	Mark Major	David Smith	Ernest Harbin
Bill Caldwell	Dennis Harrell	Bill Mauk	Talbert Smith	Earl Hicks
Mack Cameron	Bobby Hethman	Hugh Mays	J. C. Slinnette	Hubert Hill
Leonard Carter	Boyd Hill	Donald Meredith	Rudolph Slout	Paul Hodges
Ray Cate	Clifford Hunley	Lewis Mills	Bob Tillery	Boyd Galyon
Kenneth Chapman	Paul Hutton	Gene Moore	Tom Tindall	Rubin Kempton
			J. D. Underwood	Eugene King





## Sophomore Class

JIM GROVE ..... President  
J. C. CHRISTIAN ..... Vice-President

Marion Akers  
Betty June Armstrong  
Tommye\* Armstrong  
Beatrice Barry  
Florence Baker  
Frances Barnes  
Ernestine Barlow  
Imogene Basler  
Dobby Jo Bean  
Ruth Belcher  
Edith Warren Blackard  
Mary Lou Blankenship  
Sunny Mae Bondurant  
Evelyn Booker  
Helen Boring  
Rose Marie Brock  
Faye Brown  
Virginia Bryant  
Margaret Ann Burnett  
Margaret Butler  
Mary Ruth Byerly  
Mary Jean Brown  
Vera M. Chawson  
Betty Cameron  
Virginia Cameron  
Tommy Lee Campbell  
Ruth Cassell  
Kathleen Clark  
Jane Collett  
Dorothy Conger  
Nancy Cox  
Carolyn Cruze

Betty Sue Corum  
Pauline Cummins  
Joyce Dickson  
Martha Ann Daniels  
Katherine Davis  
Marie Diamond  
Doris Daw  
Maxine Drain  
Elsie Dyer  
Olive Dailey  
Faye Ellis  
Grace Evans  
Fredda Ewing  
Doris Fieden  
Margaret Fleming  
Jane Goins  
Margaret Giffin  
Ann Gilmer  
Barbara Goddard  
Kathleen Goodman  
Mary Evelyn Grahil  
Evelyn Grubb  
Marion Grubb  
Mary Householder  
Roberta Hart  
Dorothy Lee Haworth  
Katherine Helms  
June Henson  
Collette Hill  
Heen Hudson  
Faye Hall  
Mary Frances Housley

Eloise Huff  
Mary Ann Hunter  
Jean Hickman  
Helen Marie Hodgson  
Helen Irwin  
Dorothy Kidd  
Hilda Faye Johnson  
Helen Jones  
Ova Lee Jones  
Marjorie Jones  
Lucille Keaton  
Helen Kelley  
Marjorie Kimsey  
Clarice King  
Ruth Knott  
Elizabeth Lawson  
Jane Legg  
Marion Lewis  
Jane Lusk  
Pauline McKinney  
Betty McClain  
Dorothy McGhee  
Billie McKinney  
Lennie McPherson  
Frances Maples  
Margie Mathews  
Ruth Minton  
Ruth Mitchell  
La Verne Monday  
Margaret Morgan  
Ann Morris

Jean Morris  
Toddy Myers  
Kathleen Mynatt  
Mary Lee Moser  
Evelyn Musgrave  
Jean Nichols  
Jean Norwood  
Martha Jane Morris  
Barbara Payne  
Mary Picquet  
Marie Pridemore  
Alma Jean Read  
Mary Frances Ricketts  
Mildred Rich  
Helen Richardson  
Alice Rose  
Louise Rochat  
Bobby Ryder  
Paula Satterfield  
Jean Sayres  
Joan Scruggs  
Frances Schropshire  
Betty Smith  
Betty Ray Smith  
Peggy Smith  
Nellie Solomon  
Marie Spencer  
Amanda Stamps  
Katherine Stanley  
June Steele  
Reva Stoffel  
Barbara Straining

Emma Strange  
Nancy Toole  
La Verne Tate  
Faye Tipton  
Marie Tipton  
Helen Turner  
Lillian Turner  
Martha Turner  
Pauline Valentine  
Jean Vise  
Rosalie Wade  
Betty Walker  
Marjorie Wardrep  
Georgene Warren  
Evelyn Webb  
Beulah Sue White  
Virginia Wilson  
Dorothy Juanita Winstead  
Lorraine Winstead  
Eloise Witt  
Imogene Witt  
Patsy Witt  
Dorothy Wood  
Martha Wood  
Maxine Wood  
Grace Wrenne  
Dorothy Wylie  
Evelyn Yaakum  
Betty Jordan



DOROTHY WYLIE ..... Secretary  
JOHN McTEER ..... Treasurer

## Sophomore Class

A. L. Acker  
John Adair  
Charles Adkins  
John Alleman  
Harvey Altan  
Everette Armstrong  
R. T. Atkins  
Tommy Atkins  
Wayne Bassett  
Bob Bean  
Roby Bevan  
Eugene Black  
Wayne Blair  
Charles Blanc  
Bill Boring  
Earl Brown  
Bob Bruhim  
Bobby Bryan  
Gene Brown  
Charles Cain  
Boyd Capps  
John Harvey Carr  
Earl Caul  
J. C. Christian  
Lawrence Chumley  
Glenn Coleman  
G. C. Cox  
Johnny Cox  
Guy Cupp  
Kenneth Creech  
Fain Davis  
John Davis  
Bob Duggan

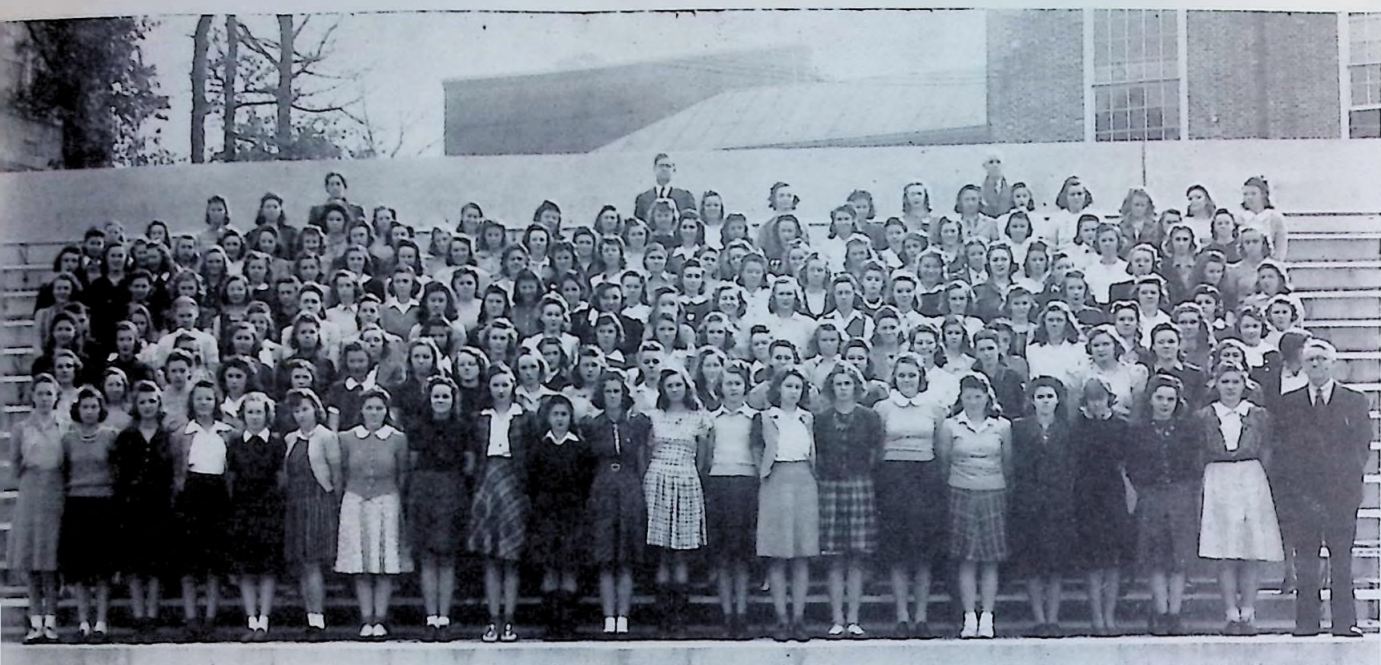
John Mathis  
James Matlock  
Dewey Dyer  
Ralph Elkins  
Alvin Elliott  
Sammy Ellis  
James England  
James Evans  
Allyn Fielden  
Bill Gallaher  
Bill Gan  
Charles George  
Harold Gibson  
Kenneth Gresham  
Jim Grove  
Charles Gwinn  
Glenn Gillilan  
Bill Hamley  
Charles Hammer  
Thomas Hannahan  
LeRoy Hansard  
James Harril  
Edward Herron  
Harry Hubbs  
Vaughn Hubbs  
Elmer Hurst  
Eugene Huskisson  
C. L. Hicks  
Amos Inklebarger  
Ned Irwin  
Curtis Jeffers  
Thedis Jenkins  
Charles Jennings

Jim Stagle  
Dale Smelser  
Jerry Smith  
Buddy Johnson  
Charles Johnson  
Joe Johnson  
Eugene Jones  
Glenn Kennedy  
L. C. Kinder  
Leon King  
John Lakin  
Erik Kvaven  
Andy Kitts  
Gene Kitts  
Earl Kunkle  
Wesley Lawson  
Paul Lawson  
Ted Lay  
Ralph Lee  
William Leslie  
Homer Linebaugh  
Jimmie Lusk  
Victor Luster  
Jack Luttrell  
E. G. McCoy  
Jimmie McCulla  
Joe McPherson  
Joe McMillan  
John McTeer  
John Moran  
Harold Major  
George Manning  
David Maples

Ralph Merriman  
Ralph Mitchell  
J. Allen Morgan  
Glenn Moore  
Jimmy Moore  
Noel Morrel  
Johnny Myers  
Jack Moore  
Bill Odell  
George Olinger  
Kendrick Owens  
Kenneth Owens  
Larry Parry  
Bob Payne  
Lester Petree  
John Pickens  
Earl Poore  
James Pruett  
Alvis Pyles  
John Pineda  
Lawren Rhea  
Lewis Rice  
Charles Rudder  
Norman Rydeland  
Howard Sherrod  
T. C. Sanders  
Billy Searle  
Chester Sharp  
Jim Shippe  
Rufus Smith  
Herbert Stedman  
Jack Sterling

Darrel Stout  
Grover Stout  
Fred Stansberry  
Fred Tarver  
Robert Taylor  
Walter Taylor  
George Thomas  
Harvey Thompson  
Tommy Thompson  
Rob Tindall  
Earl Tolson  
Jimmy Tumblein  
David Vise  
Paul Wagner  
Charles Waldrop  
Campbell Wallace  
Ben Watrous  
Leonard Webb  
Raph West  
Dillard Whitson  
Hugh Williams  
Gaylon Wilson  
Lee Williams  
Henry Wilson  
Charles Wolfenbarger  
Harold Wolfenbarger  
Bobby Wood  
Jack Warsham  
Dan Yarnell  
Jack Yeazell





## Freshman Class

ELLEN TEDDER ..... President  
THOMAS SCOTT ..... Vice-President

Betty Abbott	Rebecca DeArmond	Juanita Hodge	Alice Mitchell	Mary Ellen Simpson
Barbara Anderson	Betty Doyle	Irene Householder	Dorothy Manday	Onna Lee Slagle
Mary Frances Anderson	Martha Dunn	Glyna Hauser	Florence Moore	Haze Smiley
Jeanette Bell	Maxine Dyke	Doris Hubbs	Evelyn Musgrave	Catherine Smith
Bonnie Bise	Virginia East	Eula Hubbs	Frances Murphy	Ivatee Smith
Ruth Bowman	Jo Etta Easterday	Johannie Humphrey	Adeline Mynatt	Lois Smith
Margaret Brock	Betty Lou Edwards	Constance Hunter	Violet Mynatt	Wanda Sowder
Viola Buchanan	Aileen Ellis	Jewel Hunter	Betty Neubert	Virginia Steele
Lennis Burgess	Reba England	Louise Hurst	Juanita Neubert	Mary Lynn Stinnell
Charlotte Burnett	Barbara Fields	Virginia Hutton	Hope Norman	Louisa Swaggerty
Doris Bennett	Betty Farthier	Ernestine Hutchinson	Betty Jean Norris	Georgia Suggs
Virginia Jo Burnett	Beatrice Fowler	Edna Iams	Peggy Parks	Mildred Suttle
Patsy Ruth Butts	Dorothy Fraker	Betty Johnson	Yvonne Parks	Jean Taylor
Mildred Caldwell	Martha Rose Frank	Betty Rose Johnston	Geneva Pashchall	Vivian Taylor
Barbara Cates	Betty French	Joyce Keck	Carolyn Phillips	Ellen Taylor
June Caul	Jane French	Helen Kran	Carolyn Peters	Betty Thomas
Mary Lou Cockrum	Estolene Gibson	Grace Lamb	Margaret Perry	Mary Ruth Thornton
Jean Coker	Christine Gilliland	Dorothy Lambdin	Harriett Anne Perry	Margie Tipton
Gloria Jean Collingrion	Billie Alice Gorman	Hazel Langford	Hazel Jean Plaster	Pauline Turner
Hazel Cooke	Wilma Graves	Terne Lee	Lila Pless	Irene Waller
Louise Copeland	Cu Elizabeth Greshman	Ora Bell Lee	Mary Katherine Powell	Margaret Underwood
Nancy Copenhaver	Lois Grubb	Lois Lett	Mary Jane Ragsdale	Mary Underwood
Virginia Copenhaver	Louise Haag	Ruth Lett	Jean Rhodes	Lucille Vincent
Betty Jo Corum	Mildred Hailey	Marjorie Lett	Flora Etta Riffey	Hazel Vandergriff
Josephine Cotter	Carrie Haire	Reta June Lindsey	Catherine Roark	Sue Wakefield
Lorraine Cross	Aileen Hammer	Mary Ruth Lovely	Delores Robeson	Ola Sue Watson
Wanda Cross	Mary Hannahan	Barbara Lusby	Anna Ruth Roberts	Joyce Webber
Mary Grace Cunningham	Ruby Hansard	Eloise McCarl	Doris Roberts	Jean Webster
Constance Currie	Helen Hansard	Betty Jean McCoy	Betty June Robinson	June Webster
Wanda Dalton	Rhonda Jean Harrell	Betty McGinley	Katherine Rollins	Mildred Weigel
Francis Dance	Frances Harris	Edith Maples	Patricia Rose	Doris White
Edith Davis	Geraldine Harlman	Dorothy Mauk	Velva Rhoads	Kathleen Wilkerson
Shirley Davis	Margaret Henderlight	Gwendolyn May	Marie Sanders	Margaret Whittle
Rebecca Louise Davis	Rebecca Henry	Juanita Mayfield	Barbara Schmid	Bettie Lou Worsham
June Deans	Virginia Henson	Jo Ann Mays	Marion Schneider	Betty Wyrick
Alice DeArmond	Betty Hodge	Barbara Merrian	Peggie Sherrod	Joyce Yadan
				Gloria Young



BETTY JO CORUM ..... Secretary  
VIRGINIA HUTTON ..... Treasurer

## Freshman Class

Frank Ambrister	Gene Crigger	J. R. Hudson	Marvin Neubert	Jack Smith
Kelsa Anderson	Jimmy Cruze	Edd Hunley	Rex Norman	Vernon Smith
Bobby Armstrong	David Coker	Bill Hunter	Eugene Mouser	Jack Spears
George Atherton	Bill Cunningham	Billy Hubbs	Dobby Mustoe	Bill Stern
Charles Adkins	Kenneth Cureton	Jack Jacobs	Jack Payne	Graver Stout
Ernest Bailey	Loverne Crisp	Joe Johnson	Leonard Payne	Warren Summers
Ernest Barnes	Dorman Denton	Gordon Johnson	Tommy Pearce	Eugene Satterfield
Charles Beal	Levell Denton	Morgan Johnson	Hubert Percival	Jim Temple
Alvin Bell	Pat DeWine	Ray Johnson	Stewart Pineda	Morris Titus
Edgar Bentons	Dick Dillender	George Johnston	Taylor Proffitt	Raymond Travis
Fred Breeden	David Donaldson	J. T. Jones	Billy Ray Pyle	Jack Trent
W. J. Brooks	Richard Easterly	Sam Jack	Herbert Raley	Jerry Sudderth
Jim Brown	Richard Eggleston	Eugene Kelly	Claude Ramsey	Jack Vann
Chares Brummette	Bill Elkins	Bennie Kempton	Billy Reagan	Wayne Thornton
Eugene Brayles	Ernest England	Bobby Keene	Eugene Reardon	Dewey Waddell, Jr.
Kenneth Bunch	Ralph Enloe	Tommy Lane	Paul Rice	H. C. Wagner
J. R. Burchett	Samuel Fair	Ray Lanier	J. B. Ricketts	Bobby Waldrop
Marion Burkhardt	George Fielden	Frank Lee	John Rachat	Ray Walker
Don Burnett	Bill Fogarty	John Lonas	Oliver Roberts	John Watson
Mack Burnett	George Gaut	Hylen Lovelace	Paul Riedel	Floyd Weisgarber
Kennedy Barrier	Henry Grahl	Orville Lowe	Bill Rutherford	Joe Warwick
Walter Butler	Bill Gregory	Mako Loy	Leon Rutherford	Jack Wheeler
Robert Beeler	L. R. Ford	Hobe Arthur	J. C. Odom	Herbert White
Lucas Caldwell	Merle Haire	Hugh Lusby	Bob Mynatt	Bobby Whitehouse
Carl Candler	Stanley Hamilton	Earl Luttrell	J. C. Myers	Jack Williams
G. C. Carey	Rush Hamley	Jimmy Lassing	Paul Sherbakoff	Jackie Williams
Robert Course	Bill Foster	Newton McMahan	Sam Shanton	H. D. Williams
Robert Chadwick	Ted Gibbs	George McGhee	Frank Sanders	Carlos Wilt
Jimmy Case	Orval Hancock	Boyd McNutt	Roy Dandberg	Charles Wolfenbarger
Hugh Allen Churchman	John Hixan	Lynn Morris	Bud Sandman	Jack Wyatt
Fain Cluck	Bob Hansard	Billy Marshall	George Schaad	Jack White
Murphy Chesney	Edd Hargis	Farrest Miller	Tommy Scott	Fred Yarnall
Jethro Cockrum	William Haworth	Norman Miller	Robert Simpson	Joe Zoller
John Coker	Ralph Hendrix	Bobby Mills	Frank Sims	Wayne Thompson
Earl Cranor	Clayton Hinshaw	James Moore	Charles Smith	Bobby Rice
Jack Crigger	Bob Houser	J. T. Miller	Collis Smith	





## BACCALAUREATE SERMON

SUNDAY EVENING, MAY 24, 1942  
7:30 P. M.

First Presbyterian Church  
KNOXVILLE, TENNESSEE

by  
REVEREND E. B. MCGUKIN  
Pastor of First Presbyterian Church

Music by Church Choir

## CLASS DAY EXERCISES

TUESDAY EVENING, MAY 26, 1942  
8:00 P. M.

School Auditorium

TORCH LIGHTING CEREMONY  
led by  
MISS GRESHAM

CLASS SONG  
CLASS POEM  
CLASS WILL  
SCHOOL SONG

## COMMENCEMENT EXERCISES

THURSDAY EVENING, MAY 28, 1942  
8:00 P. M.

School Auditorium

Class Speakers  
JOE LAY  
BARBARA CLARK

Vocal Solo  
CHARLES HOBBY

Guest Speaker  
DR. FRANK B. WARD

SENIOR PROCESSIONAL

MUSIC by WALBURN-CLARK ORCHESTRA



# ORGANIZATIONS





### SENIOR HONOR SOCIETY

FIRST ROW — Mary Ann White, Jeanette Deane, Nancy King, Barbara Clark, Zoe Jeffers, Charlotte Berry, Eunice Black, Mary Heaton, Marie Duncan, Mary Eleanor Jones.

SECOND ROW — Betty Fair, Nancy Johnson, Ruth Ford, Agnes Currier, Asa Ambrister, David Black, Karen Taylor, Martha Lee Pearson, Patty Hoebner, Miss Weigel, Advisor, Katherine Seay.

THIRD ROW — Mary Hannah MacMurry, Betty Tarver, Frances Large, Geary Reynolds, Jean Cobble, Stewart McCorkle, Sarah Murphy, Betty Higbbaugh, Grady Renfro, Cora Paslon.

FOURTH ROW — Elizabeth Yadan, June Talley, Frances Holdredge, Betty Jo Powers, Dennis Waldraa, Luther Rickets, Jack Lakin, Pauline Minton.

FIFTH ROW — Bobby Helthman, Hubert Hill, Ted Rutherford, J. C. Turner, Joe Lay, Bill Yambert, Bill Daniels, Wallace Cluck, Alvin Murphy, Fred Shanton.

ABSENT FROM PICTURE: Rosemary Johnson, Faye England.



### HOME ECONOMICS CLUB

FIRST ROW — Betty Fortner, Billie Gorman, Jo Ann Scruggs, June Steele, Elsie Dyer, Katherine Helms, Marie Tipton, Marjorie Kimsey.

SECOND ROW — Gloris June Collingnon, Betty Yardley, June Jarnigan, Dorothy Hargis, Ann Morris, Jane Collette, Katherine Mohan, Wilma Rogers, Alice Rose.

THIRD ROW — Mary Hannah, Nancy Cox, Gloria June Deaver, Eloise Huff, Jo Bean, Evelyn Booker, Mary Margaret Martin, Evelyn Sisk.

FOURTH ROW — Peggy Smith, Jean Nichols, Margaret Brock, Hazel Vanderfril, Christine Gillahand, Betty Jane Julian.

FIFTH ROW — Dorothy Wylie, Polly Leinart, Geneva Sherrod, Mary Lawson, Nancy Johnson.



### 4-H CLUB

FIRST ROW — Mr. Searle, Adviser, John Carr, Eugene Barry, Don Meredith Morris Snow, John Pineda, Collis Smith.

SECOND ROW — Harold Wolfenbarger, Joe Johnson, Carlos Witt, Hubert Foster, L. C. Kinder, Gene Grant.

THIRD ROW — Reuben Kempton, Buddy Zeller, Ralph Vise, Paul Hutton, Ed Brandon, Joe McMillan.

FOURTH ROW — Howard Websier, R. B. Burnett, Edwin Smith, Bill Zachary, C. B. Clark, Glenn Wells, Clifford Hunley.

### JUNIOR HONOR SOCIETY

FIRST ROW — Billie Alice Gorman, Betty Fortner, Mary Hausholder, Rebecca Henry, Curtis Jeffers, Charles Cain, Marie Tipton, Mary Frances Hausley, Kathleen Clark, Sonny Mae Bondurant, Glen Kennedy, John Mathis, Dorothy Lee Hayworth, Barbara Straining, Marie Diamond.

SECOND ROW — Geraldine Hartman, Lois Lell, Frances Barnes, Alice Rose, Marjorie Kimsey, Beatrice Berry, Mary Jane Ragsdale, Betty Wyrick, Jean Sayres, Norman Rydland, Katherine Davis, Herbert Stedman, Charles Rudder, Rufus Smith, Tommye Armstrong.

THIRD ROW — Barbara Anderson, Barbara Gates, Hilda Henderlight, June Webster, Betty Neubert, Virginia East, Florence Baker, Roberta Hart, Reva England, Pauline Valentine, Imogene Will, Nellie Saloman, Mrs. Winegar, advisor.

FOURTH ROW — Marian Snyder, Goria Collingnon, Mary Hanahan, Constance Currie, Mary Ellen Simpson, Virginia Jo Burnett, Georgia Suggs, Beatrice Fowler, Betty Hodge, Estaleen Gibson, Jack Smith, Ruth Belcher, Martha Ann Daniels.

FIFTH ROW — Margie Tipton, Daris White, Virginia Hutton, Vivian Taylor, Hazel Cook, Jewell Hunter, Charles Brummitte, Dick Dilinder, John Rochat, Eugene Reardon, Bobby Bryan, Tommy Atkins, Murphy Chesney.

SIXTH ROW — Miss Gibson, advisor, Bobby Jo Bean, Jane Collett, Campbell Wallace, Jimmy Lumbilin, Paul Wagner, J. B. Ricketts, Norris Tulus, Sam Jack, Tommy Scott, Jimmy McCulla, Larry Parry, Bill Stern, Bob Mynall, Jimmy Lassing.

### LIBRARY CLUB

FIRST ROW — Helen Hodgson, Louise Rachal, Dorothy Lee Hayworth, Harold Godfrey, Jean Sayres, Barbara Straining, Juanita Gibbs.

SECOND ROW — Mary Arthur, Barbara Gaddard, Dorothy Price, Avery Capps, Edna Berney, Marian Akers.

THIRD ROW — Dorothy Wylie, Jane Collett, Alice Rose, Eleanor Hall, Mrs. Rogers, advisor, Ellin Stedman, Pauline Valentine.

### HI-Y

FIRST ROW — Mr. Whitehead, Adviser, R. B. Burnette, Bill Davis, John Fitch, Frank Wylie, Bill Quigg, C. B. Clark, Mr. Peirce, Adviser.

SECOND ROW — Tom Dyer, Herman Fisher, Edwin Smith, Roy Wedekind, Carl Morris, Roscoe Smith, Stewart McCorkle, Lynn McCloud.

THIRD ROW — LeRoy Ogle, Bobby Luttrell, Bobby Sandmann, Asa Ambrister, Alvin Murphy, Charles Doughty.

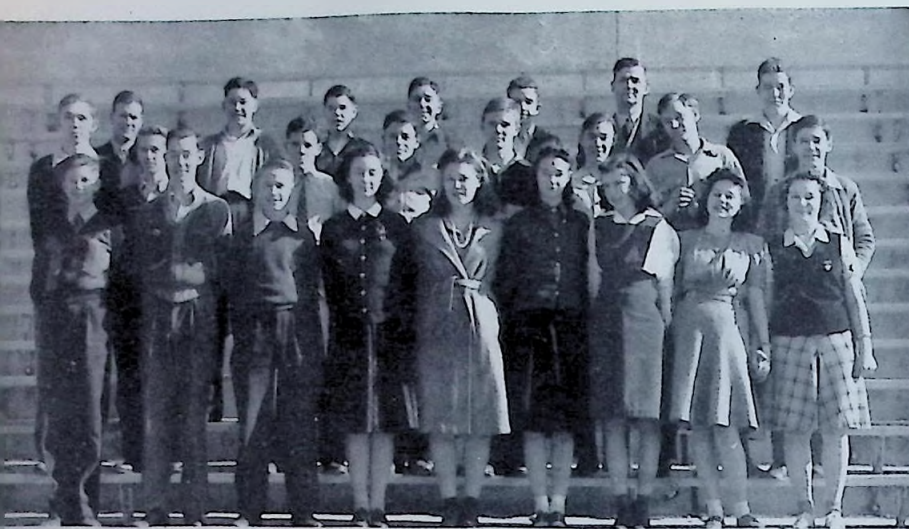
FOURTH ROW — Fred Shanton, Ted Rutherford, Joe McTeer, Bob Cunningham, Ralph Stormer, Ralph Vise.

FIFTH ROW — David Shirley, Weston Murrian, Bill Yambert, Kenneth Chapman, Leonard Carter.

SIXTH ROW — Bud Mynall, Joe Lay, Elbert Marquerat, John Wampler, Bud Evans, Clifford Hunley.





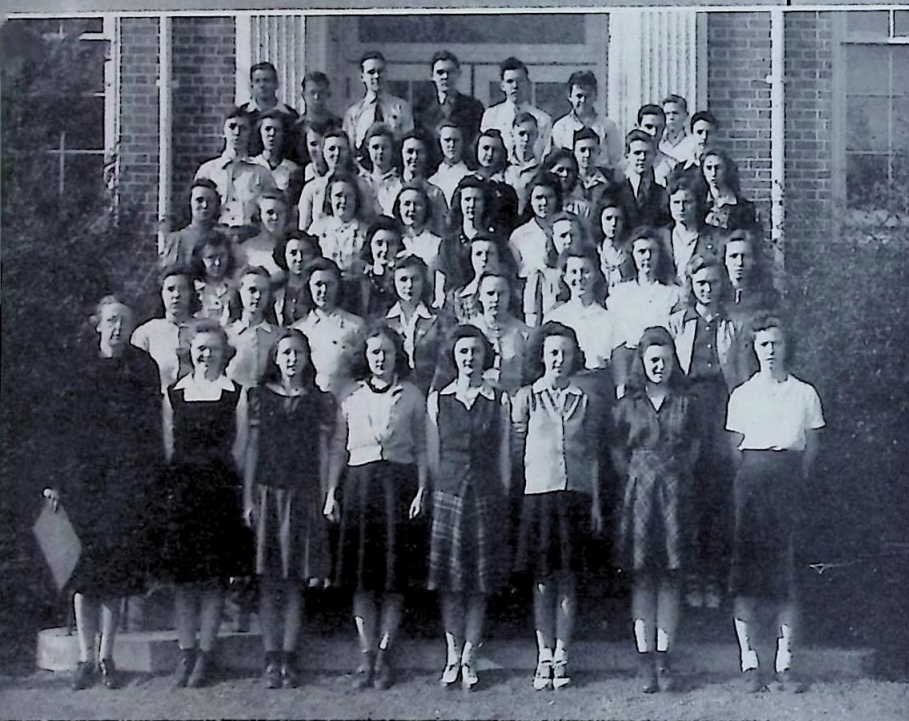


### SCIENCE CLUB

FIRST ROW — Jack Yeazil, David Black, Bobby Whitehouse, Jean Sayres, Katherine Davis, Collett Hill, Florence Baker, Mary Fances Hausey, Marie Tipton.

SECOND ROW — Bob Hellman, Curtis Jeffers, Jim Grove, Frank Ambrister, John Coker, Bill Stern, Bob Waldrop.

THIRD ROW — Mr. Stuart, Harold Gibson, Lewis Rice, Johnny Cox, John Davis, Mr. Ross, David Vise.



### LATIN CLUB

FIRST ROW — Miss Moore, advisor, Mary Margaret Painter, Nancy King, Jeanette Dean, Sonny Mae Bendurant, Georgia Suggs, Virginia East, Joyce Weber.

SECOND ROW — Sally Gray, Zoe Jeffers, Charlotte Berry, Mary Heaton, Wilma Reed, Louise Swaggerty, Mary Ruth Lovely.

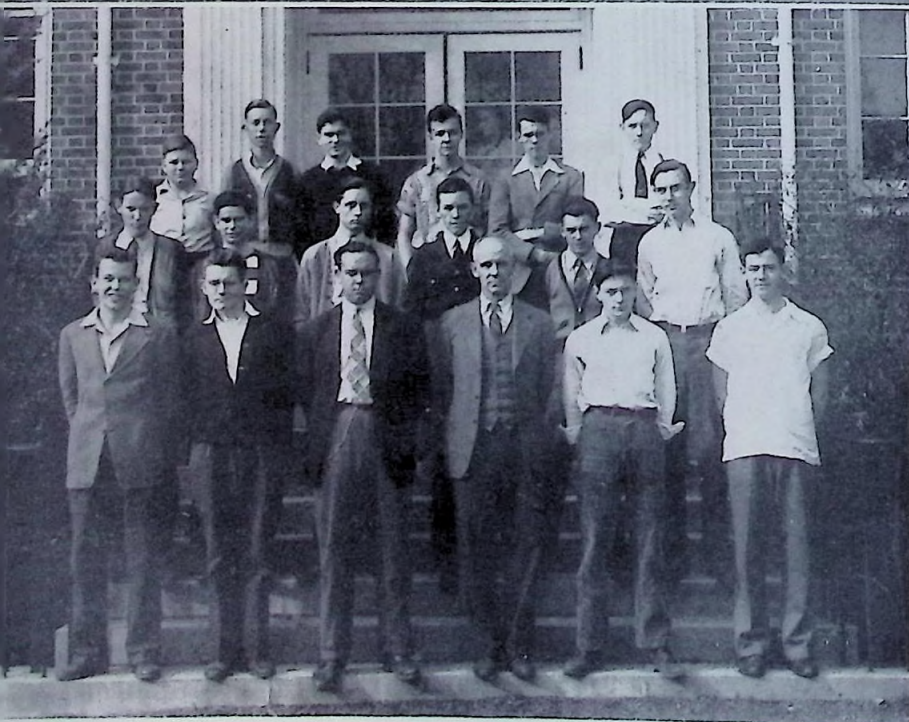
THIRD ROW — Florence Baker, Frances Harris, Jewel Hunter, Carolyn Peters, Violet Mynall, Betty Hodge, Margie Tipton.

FOURTH ROW — Barbara Clark, Barbara Gaddard, Georgene Warren, Anne Moore, Nancy Prevost, Mary Ellen Simpson, Virginia Jo Burnette, Edith Maples.

FIFTH ROW — Bob Hethman, Sarah Murphy, Mary Ann White, Virginia Henson, Frances Murphy, Alvin Bell.

SIXTH ROW — Frances Large, Ann Henson, Mildred Bowman, Martha Wood, John Coker, Jimmy Lansing, Ted Rutherford, Paul Rodell.

SEVENTH ROW — Jimmy McCullen, John Mathis, Dennis Waldrop, Raymond Babalay, Hubert Hill, Cecil Wells, Bob Rice.



### SAFETY PATROL

FIRST ROW — Reuben Kempton, Harold Keene, Joe McTeer, Mr. Searle, Advisor, Bill O'Dell, Glenn Wells.

SECOND ROW — Wayne Basset, Calvin Henson, Mack Cameron, Clyde East, R. T. Atkins, James Russell.

THIRD ROW — John Carr, Gene Grant, Paul Hutton, Jack Wilson, Jack Luttrell, J. D. Underwood.

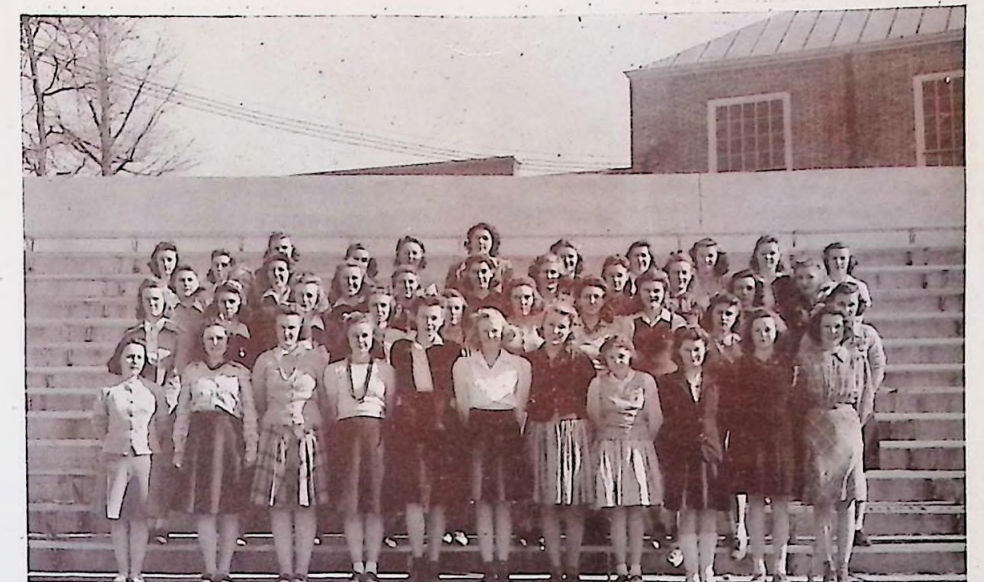
### BOWLING CLUB

FIRST ROW — Mary Ann Thornton, Jeanette Dean, Dorothy Webb, Mildred Bowman, DeWilda Myer, Taddy Myers, Pat Rose, Betty June Rose, Betty Norris, Betty Kate Yardley.

SECOND ROW — Martha Wood, Agnes Ellis, Sarah Wedekind, Doris Roberts, Emma Strange, Margaret Welch, Iris Faulkner, Eloise Winter, Mary Frances Hensley, Henrietta Childress.

THIRD ROW — Miss Duggan, adviser, Ruth Allen, Jeanette Reed, Nancy Johnson, Betty Tarver, Karen Taylor, Carrie Belle Morris, Collette Hill, Maxie Hubbs, Irene Kemplan, Maxine Stipes.

FOURTH ROW — Mary Margaret Sheets, Betty Fair, Harriet Ann Savage, Joan Warwick, Ruby Hansard, Phyllis Large, Betty Jo Powers, Mary Seal, Emalee Winegar.



### COMMERCIAL CLUB

FIRST ROW — Mary McMurry, Blanche Lawson, June Jarnigan, Irene Kemplan, Jessie Ruth Newman, Frances Mathis, Agnes Currier, Barbara Clark, Miss Stone, adviser.

SECOND ROW — Anna Ruth Fraker, Hazel Webster, Jean Warwick, Cecile Hall, Ruth Turner, June Talley, Betty Kate Yardley, Frances Melts, Inez Smith.

THIRD ROW — Nancy Prevost, Vella Suggs, Hazel Lee Hayes, Aniece Kirby, Eleanor Hall, Emmalee Wingar, Hazel Gentry, Georgia Lee, Martha Nell Solomon.

FOURTH ROW — Barbara Gibbs, Mary Elizabeth Cole, Mary Margaret Martin, Evelyn Sisk, Lois Fair, Billie Stansberry, Betty Shipley, Martha Parker.

FIFTH ROW — Paul Hutton, Jack Luttrell, Paul Cunningham, Fred Sherrad, Bonnie Mae Ward, Dorothy Hargis, Kai Mahan, Mary Margaret Sheets.

SIXTH ROW — Paul Hodges, Charles Hobby, Harold Godfrey, Harry Elliott, Carl Nelson, Edwin Smith, LeRoy Ogle, Ralph Stormer.



### DRAMATICS CLUB

FIRST ROW — Eunice Black, Mary Heaton, Leonard Fulford, Mary Margaret Painter, Harold Godfrey, Virginia Petree, Herman Fisher, Katherine Mahan, Mary Lloyd Cunningham.

SECOND ROW — Dorothy Hill, Melvyn Lady, Nancy King, Bobby Hethman, Nancy Prevost, Miss Weaver, advisor, Asa Ambrister, Avery Capps, Kathleen Brown, Mary Elizabeth Bell, Marie Northern, Dorothy Kidd, Geneva Hamilton, Jeanette Hamilton, Faye Ellis, Edna Berney, Faye Hope, Grace Evans.

THIRD ROW — Barbara Clark, Helen Irwin, Betty Couch, Rubyl Hale, Evelyn Coul, Martha Dunn.

FOURTH ROW — Mildred Keezling, Mary Lou Vittetoe, Edna White, Marie Lett, Marie Spenser, Dorothy Thomas, Mary Elizabeth Jones.

FIFTH ROW — Nancy Cox, Jean Vise, Emalee Winegar, Eleanor Hall, Geary Reynolds, Mary Catherine Brown, Mary Pearl Gault.

SIXTH ROW — Dennis Waldrop, Charles Hobby, Marie Tipton, Jane Collett, Dorothy Wylie.

SEVENTH ROW — John Wampler, Paul Hutton, Jack Luttrell, C. B. Clark, Ralph Stormer, Bill Roberts, Deane Williams.

EIGHTH ROW — Stewart McCorkle, Bill Roberts, LeRoy Ogle, Carl Nelson, Ralph Vice, Edwin Smith, Charles Edington.







## HIKING CLUB

FIRST ROW — Mary Katherine Brown, Mary Pearl Gault, Marie Tipton, Dorothy Haworth, Jean Sayres, Katherine Davis, Colette Hill, Barbara Gaddard, Charlene White, Dorothy Wood.

SECOND ROW — Doris White, Jim Grove, Virginia Hutton, Mary Jane Ragsdale, Betty Wyrick, Helen Crone, Katherine Mahan, Lucy Mitchell, Barbara Baldock, Virginia Wilson.

THIRD ROW — June Deans, Dorothy Mauk, Jean Will, Louise Warwick, Amanda Stamps, Betty McClain, Dorothy Canger, Doris Dow, Alice Rose, Virginia Henson, Frances Harris.

FOURTH ROW — Sammy Shanton, David Grove, Ralph Stormer, Lewis Rice, Larry Parry, John Cox, Bob Cunningham, Fred Shanton.

FIFTH ROW — Mr. Stuart, Noel Morrell, John Pickens, Buddy Sandmann, Bill Searle, James Harriett, Ray Wedekind, Bill Yambert, Sonny Baker, David Shirley.



## MONITORS

FIRST ROW — Ada Yadan, Polly Leinart, Josephine Sterling, DeWilde Myer, Mildred Bowman, Carrie Belle Morris, Charlotte Stoffel, Pearl Dalton.

SECOND ROW — Frances Mathis, Agnes Currier, Marie Northern, Marie Duncan, Marie Hill, Dorothy Anderson, Mildred Miller.

THIRD ROW — Hazel Gentry, Karen Taylor, Betty Grubb, Charlsie Hobby Betty Cruze, Dorothy Osmun, Kathryn, Snyder, Mary Elizabeth Jones, Martha Lee Pearman, Patty Hoebner.

FOURTH ROW — Jack Wilson, Paul Hutton, Jack Luttrell, Harold Godfrey, Mary Heaton, Eunice Black, Katherine Seay.

FIFTH ROW — Bud Mynatt, Boyd Hill, Fred Sherrad, Jimmy Edmondson, Dennis Waldrop, Bobby Sandmann, Donald Van Hoozier.



## DEBATING CLUB

FIRST ROW — Judd Edwin Smith, Charles Edington, Harold Godfrey, Asa Ambrister, Nancy King, Miss Mary Weaver, Adviser, Bob Hethman, Charlotte Stoffel.

SECOND ROW — Bob Duggan, Nancy Cox, Leonard Fulford, Erik Kvaven, Marie Spencer, Barbara Clark, Deane Williams.

THIRD ROW — Herman Fisher, Polly Leinart, Marie Tipton, Jean Vise, Clara Lawson, Geneva Hamilton, Jeanette Hamilton.

FOURTH ROW — Ralph Stormer, Ralph Vise, Mack Hansard, Marie Lett, Marie Northern, Evelyn Caul, Mary Tindell, Nancy Johnson.

FIFTH ROW — Mary Catherine Brown, Kathleen Brown, Edna White, Mary Elizabeth Jones, Eleanor Hall, Emalee Winegar, Geary Reynolds.

SIXTH ROW — Roscoe Smith, Bill Mauk, C. B. Clark, Sonny Baker, Dorothy Thomas, Katherine Mahan, Donald Van Hoozier.

## JUNIOR GIRL RESERVES

FIRST ROW — Sally Gray, Jennie Malliby, Mary Margaret Painter, Fern Nicely, Betty June Rose, Mildred Bowman, Jeanette Dean, Rose Ann Schmid.

SECOND ROW — Nancy Johnson, Mary Eppes, Sara Wedekind, Mary Douglas Williams, Lula Mae Myers, Freddie Lou Easterly, Helen Bell, Mary Margaret Martin.

THIRD ROW — Anna George, Emmalee Norris, Elizabeth Lawson, Hannah Russell, Maxie Hubbs, Estha Bruhin, Ellen Steadman.

FOURTH ROW — Mary Arthur, Betty Chance, Sammie Collins, Deane Williams, Ethel Rachat, Dorothy Webb.

FIFTH ROW — Jean Vise, Mary Elizabeth Bell, Harriett Ann Savage, Jean Marcus, Mary Ann White, Dorothy Osmun.

SIXTH ROW — Josephine Sterling, Dorothy Evans, Mary Monday, Betty Cruze, Betty Highbaugh, Lucy Mitchell, Carrie Belle Morris, Betty Jane Julian.

SEVENTH ROW — Frances Bishop, Barbara Machamer, Barbara Wells, Miss Duggan, advisor, Juanita Gibbs, Evelyn Sisk, Katherine Mahan, Sarah Murphy.



## SOPHOMORE GIRL RESERVES

FIRST ROW — Mary Householder, Rose Marie Brock, Ruth Belcher, Katherine Helms, Jane Lusk, Evelyn Booker, Jo Ann Scruggs, Betty McClain.

SECOND ROW — Barbara Straining, Marie Diamond, Sonny Mae Bandurant, Marjorie Wardrop, Dorothy Wylie, Margaret Griffin.

THIRD ROW — Jean Sayres, Katherine Davis, Mary Frances Housley, Elsie Dyer.

FOURTH ROW — Alice Rose, Marjorie Kimsay, Marie Tipton, Edith Blackard, Kathleen Mynatt, Billie McKinney.

FIFTH ROW — Beulah Sue White, Pauline Cummings, Martha Wood, Mary Ann Hunter, Doris Dow.

SIXTH ROW — Jo Bean, Clara Lawson, Imogene Basil, Mildred Barnes, Mary Ann Hunter, Mary Lee Moser, Doris Dow.

SEVENTH ROW — Eloise Huff, Carolyn Cruze, Helen Boring, Lila Pless, Marion Akers, Dorothy Canger, Dorothy Kidd, Jane Collet, Ann Morris, Amanda Stamps, Nancy Cox.

EIGHTH ROW — Emma Strange, LaVerne Tate, Jean Nichols, Helen Hodgson, Doris Fielden, June Steele, Jean Morris, Peggy Smith.

NINTH ROW — Ruth Knott, Barbara Payne.



## SENIOR GIRL RESERVES

FIRST ROW — Geneva Hamilton, Jeanette Hamilton, Inez Smith, Aniece Kirby, Martha Lee Pearman, Irene Kempton.

SECOND ROW — Sara Watrous, Barbara Clark, Rosemary Johnson, Jean Cobble, Eunice Black, Zoe Jeffers.

THIRD ROW — Jean Johnson, Betty Hicks, Mary Heaton, Marie Lewis, Frances Mathis.

FOURTH ROW — Patty Hoebner, Karen Taylor, Frances Holdredge, Margaret Welch, Iris Faulkner, Mary Seal.

FIFTH ROW — Lena Kate Ailor, Vella Suggs, Hazel Lee Hayes, Jane Curtis, Eleanor Hall, Virginia Osmont, Billie Stansberry, Dorothy Hargis.







## GLEE CLUB

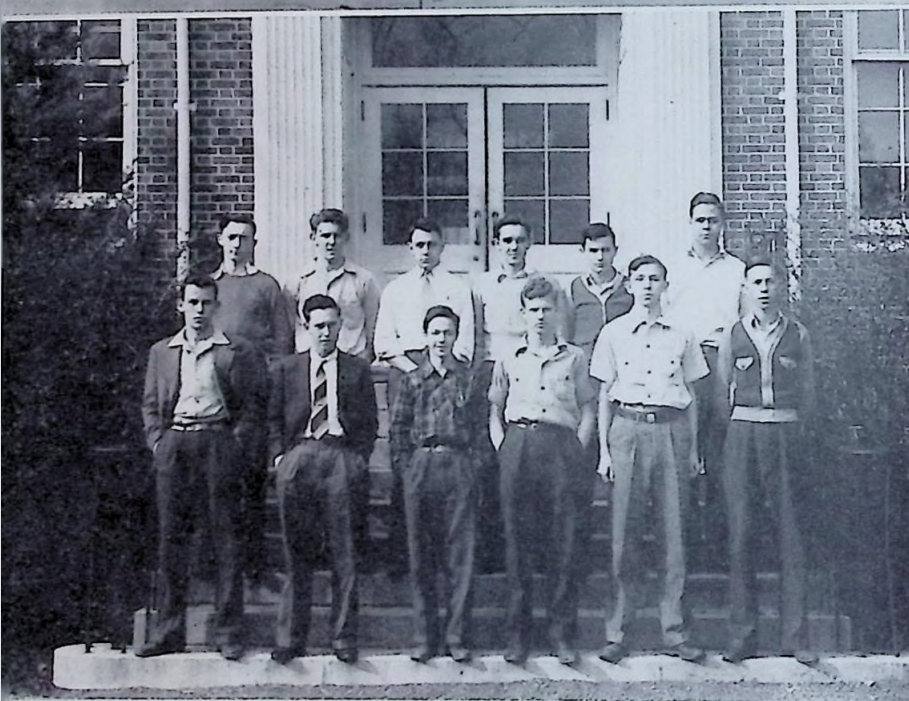
Miss Evelyn Perkins, Director, Lois Grubb, Betty Thomas, Ruth Brayles, Dorothy Lambdin, Kathleen Mynatt, Jean Hickman, Lois Hammer, Estaleen Gibbs, Charlotte Stoffell, Sonny Mae Bondurant, Ann Morris, Betty Grubb, Florence Baker.

SECOND ROW — Lucy Mitchell, Katherine Mahan, Geneva Hamilton, Jeanette Hamilton, Ann Moore, Mary Jo Bowling, Dorothy Wood, Freddie Lou Easterly, Betty Jean McCoy, Aileen Ellis, Catherine Helms.

THIRD ROW — Charlene White, Guy Cupp, Margaret Moneyhun, Sara Watrous, Virginia Bryant, Mary Lee Maser, Marjorie Kimsey, Maxie Hubbs, Estha Bruhin, Margaret Fogarty.

FOURTH ROW — Helen Masengil, Mary Grace Cunningham, Constance Mynatt, Clarice King, Mary Ann Hunter, Mary Lou Watson, Margaret Stewart, Georgene Warren, Charlsie Hobby, Jean Marcus.

FIFTH ROW — Jimmy Edmondson, Bob Duggan, Gene Grant, Bill Quigg, Wendell Ogg, Sammy Shanton.



## MOVIE OPERATORS

FIRST ROW — Reuben Kempton, J. L. Powell, Leonard Fulford, Lester Williams, Bob Helman, Gene Grant.

SECOND ROW — Ralph Simpson, Don Lett, Ralph Vise, Ed Williams, Clarence, Bracken, Kendrick Shipman.



## SKETCH CLUB

FIRST ROW — Beulah Sinkhorn, Karen Taylor, Joyce Long, Sarah Mack Shirley, Lucy Mitchell, Katherine Mahan.

SECOND ROW — Jimmy Strange, Harry Elliott, Melvyn Lady, Jackie Pardue, Ethel Rochat, Sara Wedekind.

THIRD ROW — Cecile Hall, Elizabeth Yadan, Juanita Harris, Jean Watson, Deane Williams, Lenora Caldwell, Mary Fine.

FOURTH ROW — Jack Lakin, Edwin Smith, Bill Mauk, Mr. Daugherty, Adviser, Kenneth Creech, Howard Webster.

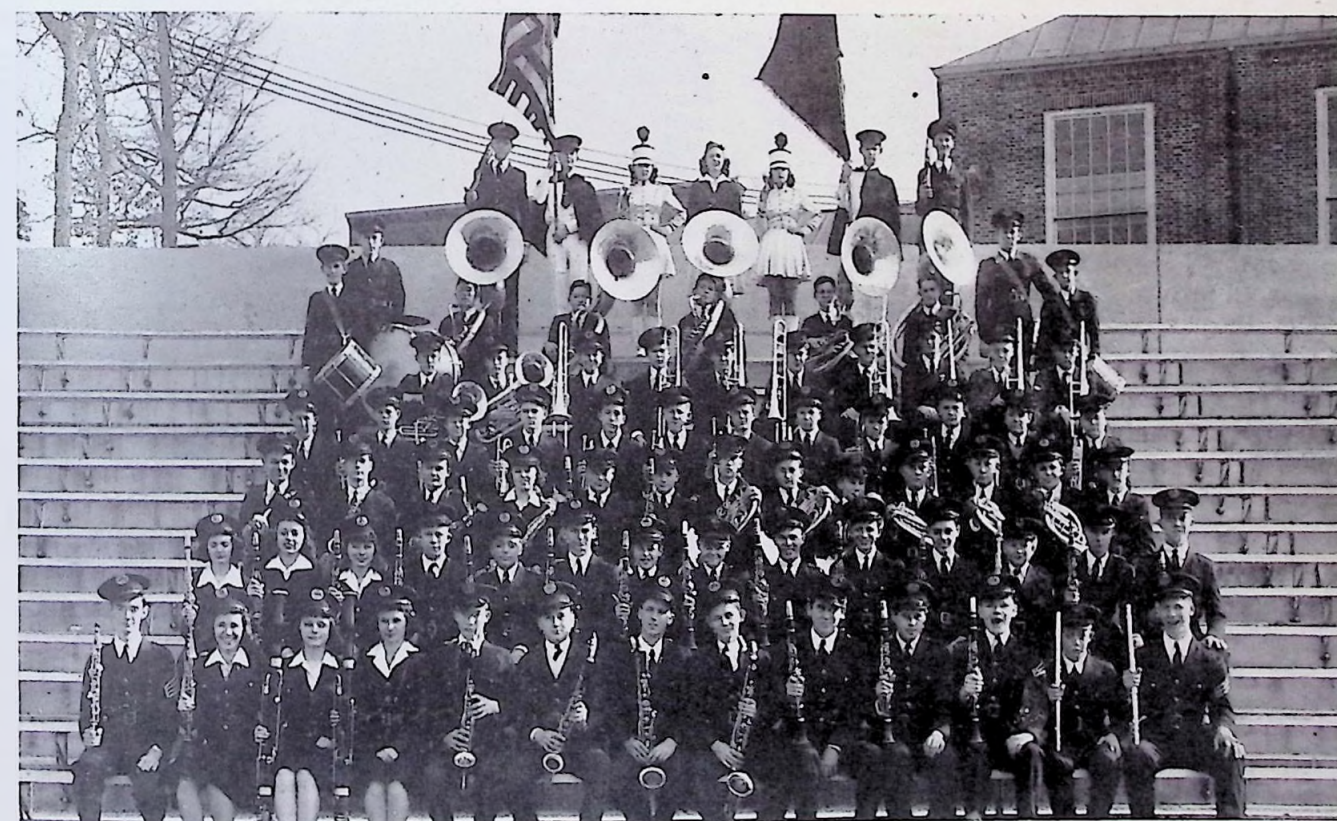
FIFTH ROW — Ralph Stormer, C. B. Clark, Mack Cameron.



## ORCHESTRA

FIRST ROW: Sara Murphy, Elizabeth Gresham, Sammie Collins, Deane Williams, Mary Jane Ragsdale, Betty Jo Powers, Martha Felkner, Nancy Johnson, Betty Cruze, Dorothy Thomas, Frances Lovingood, Mary Douglas Williams, Hazel Gentry.

SECOND ROW: Bud Evans, Carl Nelson, R. B. Burnette, John Fitch, Joe McTeer, Stewart McCorkle, Kenneth Woods, Elbert Marguerat, Carlyle Alexander, David Shirley.



## BAND

FIRST ROW: John Welmars, Nancy Johnson, Mary Eleanor Jones, Betty Jo Powers, Fred Sherrod, Tom Lane, Charles George, Bill Davis, Carlyle Alexander, Kelly Lynch, David Shirley, Jerry Smith, Bill Yambert.

SECOND ROW: Dorothy Thomas, Betty Cruze, Sara Murphy, Richard, Eggleston, Wallace Cluck, Lawrence Chumley, Paul Sherbakoff, Rufus Smith, John Alteman, Kenneth Greshman, Bobby Luttrell, James Harriel, Tom Dyer, Glenn Kennedy.

THIRD ROW: R. B. Burnette, Joe Lay, Joe Fielden, Mary Douglas Williams, Norman Rydman, Alvis Pyle, Bud Evans, Charles Waldrop, Herbert Steadman, Bob Cunningham, Bill Broome, S. E. Satterfield, Curtis Jeffers.

FOURTH ROW: Elbert Marguerat, Weston Murrian, Jack Yeazil, Paul Hutton, James England, Roy Wedekind, Dennis Harrell, Charles Blanc, Clyde East, M. M. Winkle, Duane Armstrong, David Smith.

FIFTH ROW: Roland Keezal, Charles Rudder, John Cox, Lewis Rice, Sonny Baker, Carl Nelson, Tom Atkins, Stewart McCorkle, Herbert Mynatt, Grady Renfro.

SIXTH ROW: Jack Sterling, Bill Roberts, V. C. Adcock, Harold Gibson, Ralph Bounds, Joe McPherson, James Heatherly, John Fitch, John Davis.

SEVENTH ROW: J. D. Underwood, David Grove, Jean Leinart, Jean Johnson, Jean Cobble, Edward Minton, John Wampler.





FEATURES

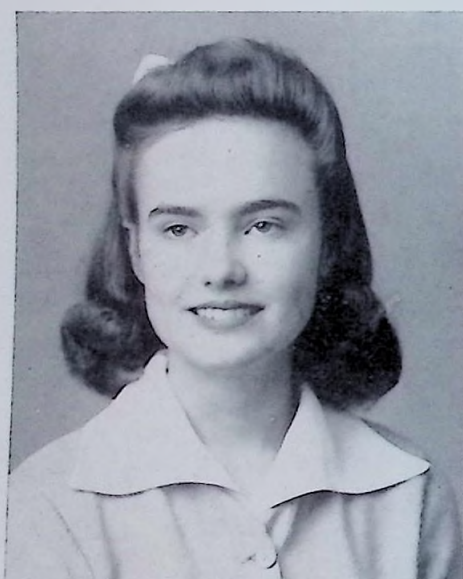


★★★ MISS LIBERTY

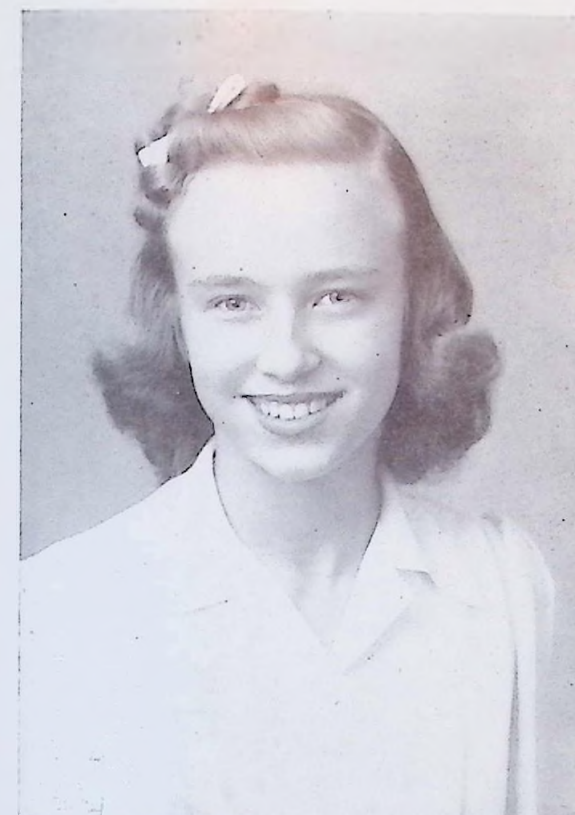


*Kathleen Van Story*

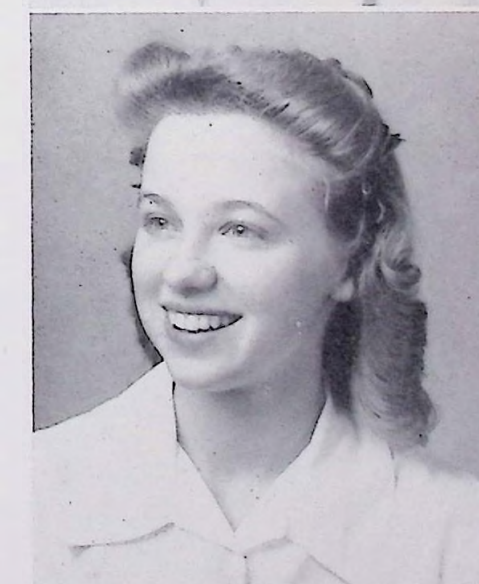




CARRIE BELLE MORRIS



GERALDINE HARTMAN



MARJORIE WARDREP  
MARJORIE KIMSEY

★ ★ ★ M A I D S

O F H O N O R

VIRGINIA HUTTON  
JANE COLLETTE





## CHEERLEADERS

VERNA PROFFITT

ANIECE KIRBY

HAROLD GODFREY

HAYNE BLAKELY

INEZ SMITH

LOUISE BORING



# ATHLETICS





## CAPPER ENGRAVING COMPANY

INCORPORATED  
ILLUSTRATORS RETOUCHERS COLOR SPECIALISTS

102 N. BROADWAY  
Knoxville, Tennessee



Congratulations Seniors!

From

"The Quality School of the South"

KNOXVILLE  
BUSINESS COLLEGE

- ① This school occupies its own large school building.
- ② It is FULLY ACCREDITED.
- ③ Placement of graduates is no problem. Although this is the largest business college in this area, many more calls are received than can be supplied.
- Catalogs are free—Write for yours TODAY.

## Knoxville Business College

State & Church

Knoxville, Tennessee



Best Wishes From . . .  
**THE SAM TOOLE CANDY CO.**

Distributors Of  
BUNTE'S WORLD FAMOUS CANDIES  
NESTLE'S CHOCOLATES  
and  
MANY OTHER BRANDS

**BANK OF KNOXVILLE**

"That Friendly Bank"

MARKET at CHURCH

COMPLETE BANKING SERVICE

Member Federal Deposit Insurance Corporation

COMPLIMENTS OF  
**FOUNTAIN CITY HARDWARE CO.**

1933

Dial 6-2171

1942

COMPLIMENTS OF  
**BISHOP'S GRILL**

WE NOW HAVE  
**FURNITURE**

SOLD ON  
Monthly Payment Plan — Use Your Charge Account

**WOODRUFF'S**

424 Gay Street

COMPLIMENTS OF

*Krispy Kreme*

DELICIOUS DOUGHNUTS

"We Shoe the Whole Family"

*Spence Shoe Co.*  
430 SO. GAY ST.

MEN

Florsheim  
Jarman  
Fortune

LADIES

Florsheim  
Peacock  
Johnson  
Vitality

**KNOXVILLE**  
**SPORTING GOODS CO**

710 South Gay Street — Knoxville, Tennessee

Complete Outfitters  
FOR MEN  
AND BOYS



**McCORMICK - DEERING**  
**FARMALL TRACTORS**

Are the original successful all-purpose row crop tractors —  
600,000 on farms, LIGHTS — STARTER — POWER LIFT —  
They all burn CHEAP fuel. Full line of time proven tractor  
tools.

COME IN, WE TRADE and GIVE TERMS  
ASK FOR DEMONSTRATION — NO OBLIGATION  
BARGAINS, Used Tractors and Farm Machinery

**RITTER IMPLEMENT**  
**COMPANY**

120 E. JACKSON AVENUE — PHONE 2-7030

BUY EVERYTHING

**MUSICAL**

FROM

**CLARK & JONES**

IN KNOXVILLE

**ARMSTRONG**  
**HARDWARE**

416 UNION AVENUE

Phone 3-9712

COMPLETE  
PHOTOGRAPHIC LINE  
CAMERAS, DEVELOPING  
PRINTING and ENLARGING

**FRANK L. ROUSER COMPANY**  
INC.

317 West Church Avenue — Dial 3-0409

**JAY G. MADDEN**

**CHOICE MEATS**

3 & 4 CITY MARKET



# SCHOLARSHIP LOANS

Education is like an investment for the future. Morris Plan Bank urges every student to further his education, as a special aid to students, Morris Plan Bank offers a Scholarship loan. If you are interested in this type of loan drop by the bank for the individual and see Mr. Sullins or Mr. Kennedy and let them give you all the details.

# Morris Plan Bank



OF KNOXVILLE  
THE BANK FOR THE INDIVIDUAL

# COMPLIMENTS OF Supreme Foods Company, Inc.

2451 - 53 NORTH BROADWAY

Manufacturers Of

# SUPREME *Lemonized* MAYONNAISE

SOLD ONLY BY INDEPENDENT GROCERS

SCHOOL OF  
BEAUTY CULTURE



ENROLL — FOR WORK!

Beauty Culture is a field nation-wide in providing employment. But! — it employs only TRAINED workers. Its better jobs demand better-trained operators. Prepare, at this recognized Beauty Culture School!

Write For Our Free Catalog

TENNESSEE SCHOOL OF BEAUTY CULTURE  
KNOXVILLE, TENNESSEE

# CAMPBELL WALLACE

Civil and Consulting Engineer

312 MERCANTILE BUILDING  
KNOXVILLE, TENNESSEE

# Kays Ice Cream

•  
TWENTY  
DIFFERENT  
FLAVORS  
•

MALTED MILKS

Convenient Locations . . . 2561 East Magnolia  
2032 North Broadway  
1248 North Broadway  
1211 East Main Ave.  
706 East Vine Ave.  
1100 North Central  
3400 East Magnolia  
309 West Church  
Broadway & Mineral Springs Road

Also . . . Maryville, Clinton, LaFollette

FOUNTAIN CITY . . . 4501 NORTH BROADWAY

Pony Carts All Over Town

# KAYS OF KNOXVILLE, Inc.

2564 Magnolia Avenue

PHONE 2-8113

COMPLIMENTS

OF

# KNOX COUNTY WATER COMPANY

SERVING

FOUNTAIN CITY'S

WATER NEEDS

# LEM ANDERSON CO.

506 Market Street

"FOOD MERCHANTS IN KNOXVILLE

SINCE 1913"

# TILLER'S

PRODUCTS:

CANDIES

POP CORN

NUT MEATS

CRACKLINGS

SANDWICHES

POTATO CHIPS

POTATO STICKS

# H.A.T. FOOD PRODUCTS CO.

1706 North Broadway — Phone 3-2498



## CONGRATULATIONS . . . .

to the Seniors of Central High School and with  
best wishes for their future success and happiness

### The Draughon (Drawn) Business College

KNOXVILLE      TENNESSEE

ENTER ANYTIME

CATALOG FREE

FULLY ACCREDITED

COMPLIMENTS OF  
**max friedman - jeweler**

304 South Gay Street

COMPLIMENTS OF  
**HOP BAILEY**  
**Company**

REALTORS — INSURORS

703 Market Street

Phone 3-7104

**BORUFF**  
**SERVICE STATION**

3900 North Broadway

Phone 6-3181

**THORNTON**  
**DRUG COMPANY**

HOTEL AVENUE — FOUNTAIN CITY

COMPLIMENTS OF  
**BROTHER'S BEDDING CO.**

*For Restful Sleep*

MANUFACTURERS and RENOVATORS

Mattresses, Box Springs, Sofa Beds

And Living Room Suites

Phone 6-2373

COMPLIMENTS OF  
**Dr. S. B. Hamilton**  
*and*  
*Associate Dentists*

Corner Gay Street and Wall Avenue

Telephone 3-3321

Knoxville, Tennessee

MEET ME  
at the  
**DUTCH MILL**

COMPLIMENTS  
OF  
**THERON D. WILSON**  
*Trustee*  
KNOX COUNTY

COMPLIMENTS OF  
**RALPH K. ADCOCK**  
*County Register*  
KNOX COUNTY

**SWAN'S**  
**BREAD and CAKES**

*"A Delight in Every Bite"*

**TALLEN**  
**DRUG COMPANY**

*Whitman — Hollingsworth*  
CANDIES

6-1947 — PHONES — 2-9949  
FOUNTAIN CITY, TENNESSEE

**LESTER MAXWELL**

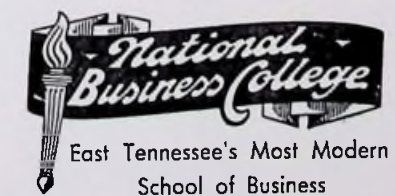
*"You Furnish the Girl  
We Furnish the Home"*

208 - 210 South Gay Street

**SMITHWOOD**  
**Drug Store**

TAZEWELL PIKE and SANDERS LANE

Phone 6-1123





**P A R K**

**NATIONAL BANK**

MODERN FACILITIES and EFFICIENT SERVICE

Member Federal Reserve System and Federal Deposit Insurance Corp.

Compliments of  
**PHIL JONES OIL CO.**

Distributors of  
**PAN-AM Products**

Knoxville, Tennessee

Meet your friends

... at ...

*Galo*

**ICE CREAM CO.**

Dial 2-8911

**HARDWARE**

A Complete Stock  
At Reasonable Prices

**LOWE-ARMSTRONG**

**Hardware Company**

No. 9 Market Square

CONGRATULATIONS SENIORS!  
VISIT

**PARKER BROS. CO., Inc.**

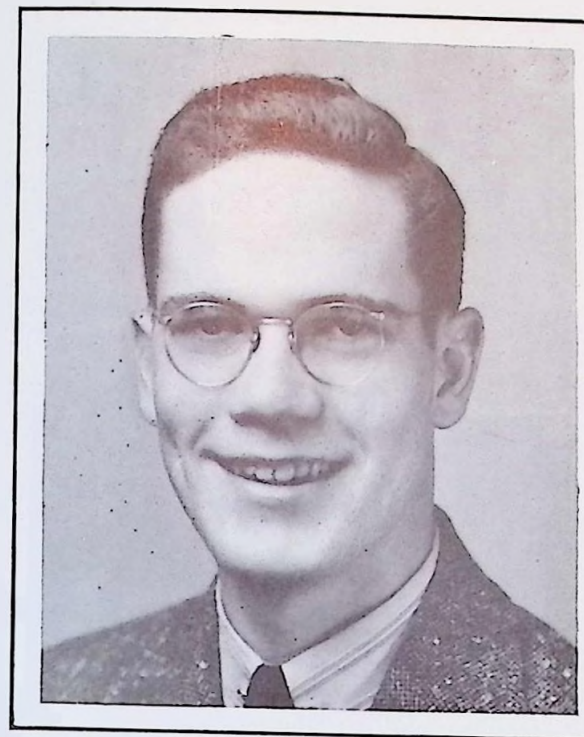
"The Complete Farm Supply Store"

418 - 420 - 422 WALNUT STREET

Dial 2-6155

Headquarters For

HARDWARE, HARNESS, SEEDS, FEED  
FERTILIZER, ROOFING  
PAINTS, FENCING and ALL FARM NEEDS.



*When You  
Think of  
Portraits*

*Think of...*



OFFICIAL PHOTOGRAPHERS FOR THE CENTRALITE

"WE INVITE YOU IN"

*Kimball's - Jewelers*

428 Gay Street

KNOXVILLE, TENNESSEE

**MANN'S**





THE OLDEST BANK

— IN —

KNOX COUNTY

## FOUNTAIN CITY BANK

MEMBER FEDERAL DEPOSIT INSURANCE CORPORATION

THE

### HOPE BROTHERS CO. JEWELERS

613 Market Street  
KNOXVILLE, TENNESSEE

*"Knoxville's Oldest Jewelers"*

DIAMONDS, WATCHES,  
RINGS, PENS, VANITIES,  
COSTUME JEWELRY  
WEDDING ANNOUNCEMENTS,  
VISITING CARDS

BEST WISHES TO CENTRAL HIGH SCHOOL

AND SENIORS

### HAZEN KREIS

SHERIFF

KNOX COUNTY

KNOXVILLE, TENNESSEE

EX BOBCAT and FOUNTAIN CITIAN

WRECKER AND TIRE SERVICE

## HENSLEY MOTOR SERVICE

4220 NORTH BROADWAY, FOUNTAIN CITY

*Operated By*

STALEY HENSLEY and BEARL HENSLEY

Phone 6-1103

PAINTING, BODY, and FENDER REPAIRING

## FOUNTAIN CITY FLORIST

ROBERT W. STORMER, *Proprietor*

CITY-WIDE DELIVERY

DIAL 6-2731

NIGHT CALLS 6-1405

*"Say it With Flowers" — But Say it With Ours*

MEETING Your Personal Needs

SEE

## COMMERCIAL BANK AND TRUST COMPANY

R. L. HUFF, *President*





SENIOR CLASS

— OF —

CENTRAL HIGH SCHOOL

MAY WE, EXTEND TO EACH OF YOU  
CONGRATULATIONS AND BEST WISHES.

***Clarence F. Coleman Company***

*Printing and Engraving*

• KNOXVILLE



