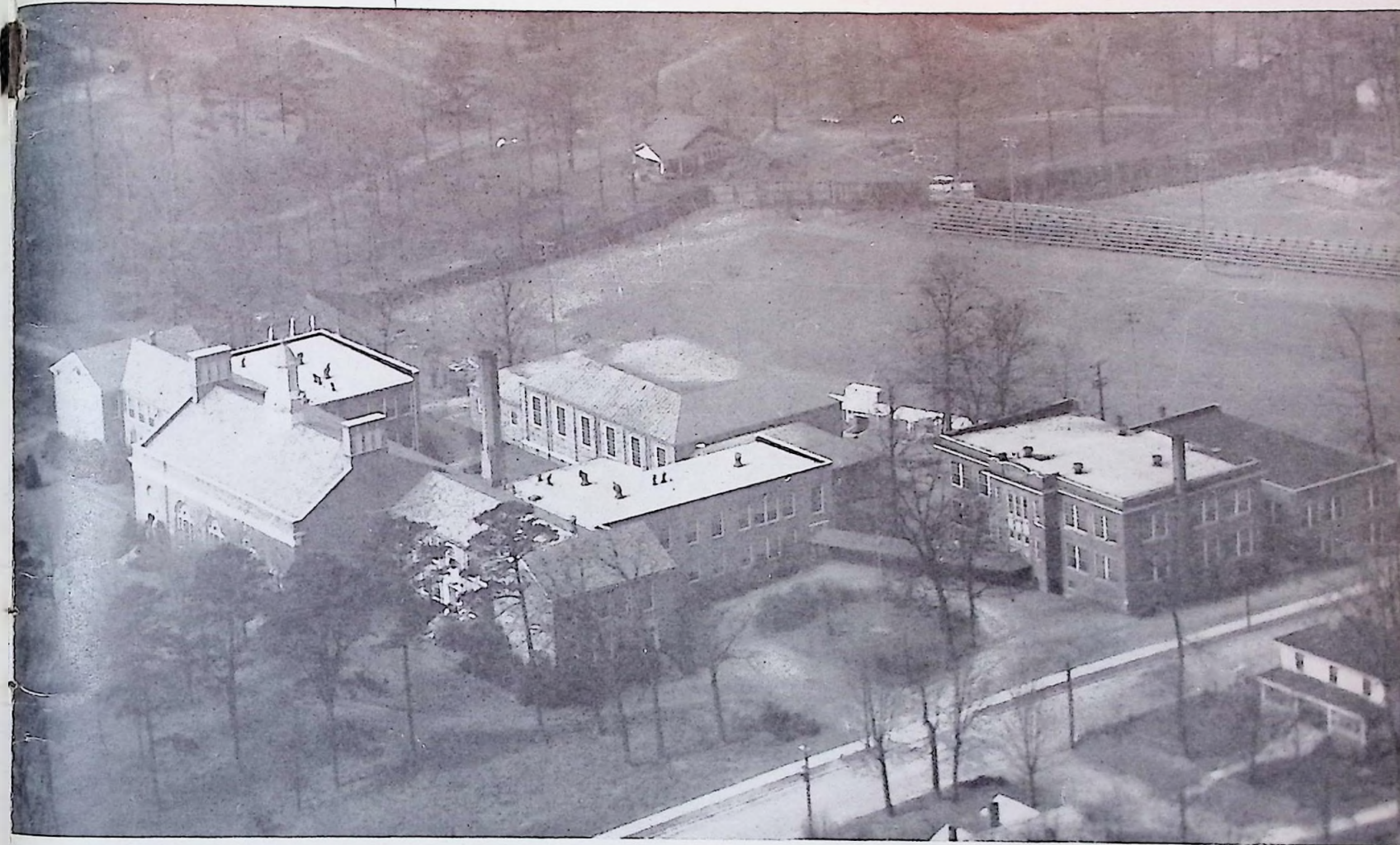




BARBARA HOPE HAYNES
Editor-in-Chief

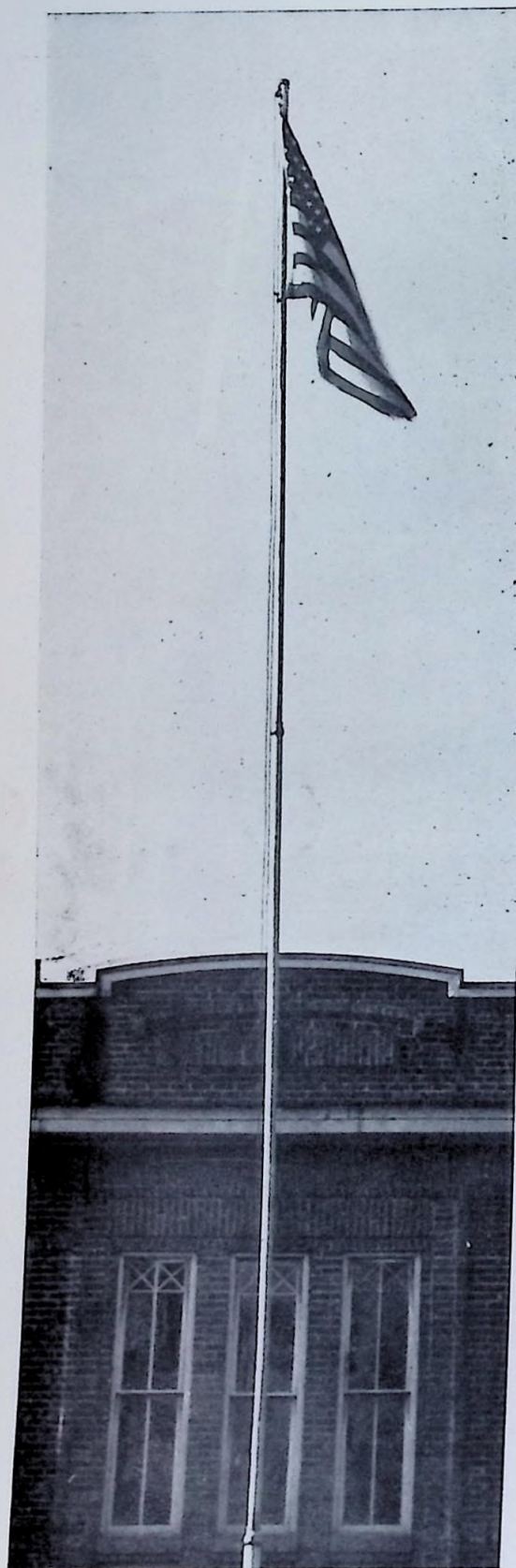
BILL QUIGG
Business Manager

T H E N I N E T E E N F O R T Y - O N E



CENTRALITE

PUBLISHED BY THE SENIOR CLASS
CENTRAL HIGH SCHOOL
FOUNTAIN CITY TENNESSEE



FOREWORD

THE STAFF OF THE CENTRALITE PRESENTS THE SENIOR EDITION FOR 1940-1941 TO THE STUDENT BODY AND THE PUBLIC AT LARGE. WE HAVE TRIED TO ECHO THE TRUE SPIRIT OF CENTRAL IN THIS VOLUME AND GIVE YOU A GLIMPSE OF OUR HIGH SCHOOL LIFE. WE HOPE THE PERUSAL OF ITS PAGES MAY ALWAYS BRING BACK ON THE WINGS OF MEMORY THE MANY HAPPY HOURS AND THE VARIED EXPERIENCES OF THIS YEAR . . .



DEDICATION

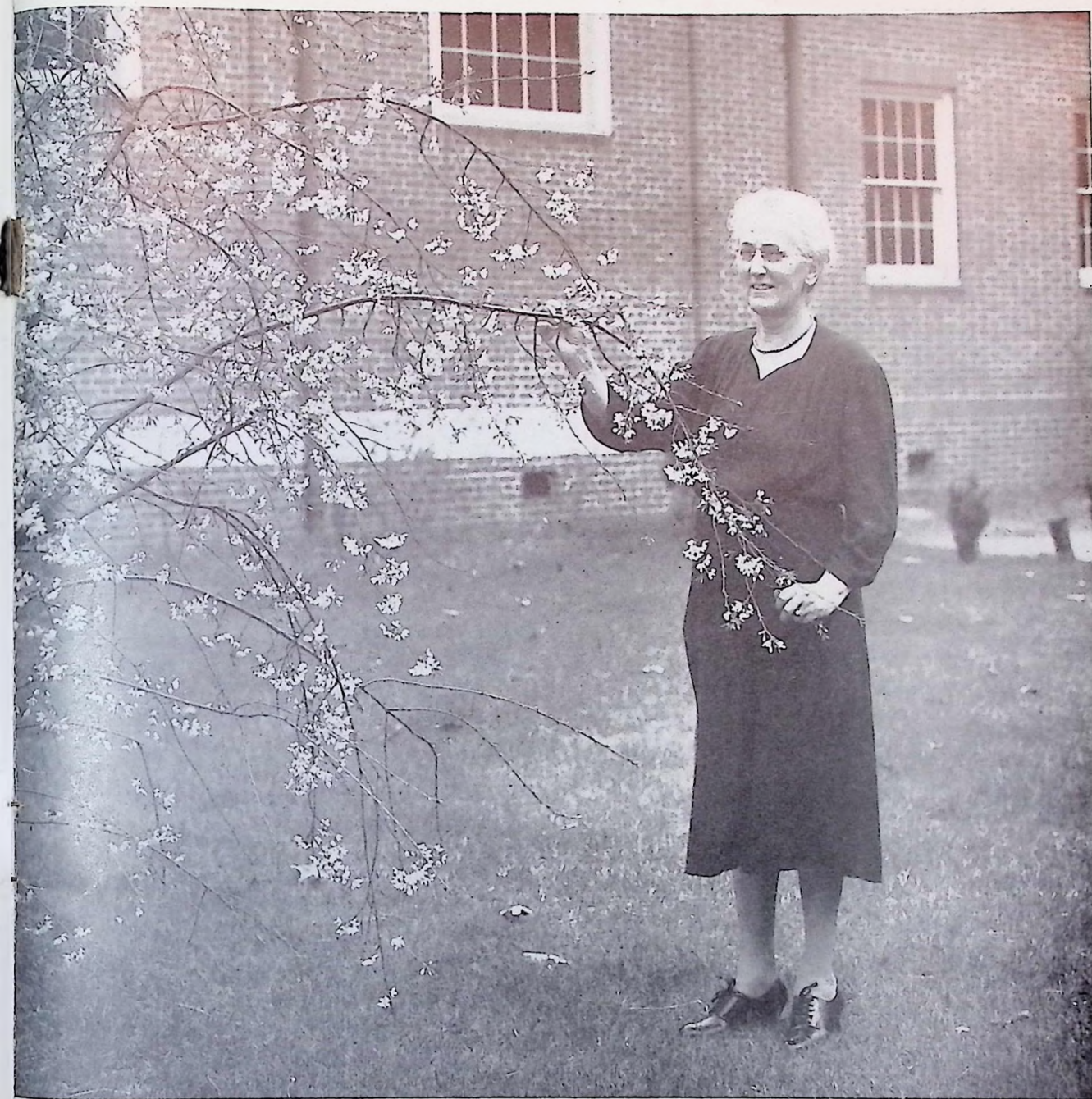
To Mr. Bell, whose untiring patience, unassuming dignity, and constant attention to a life's work have inspired us to appreciate deeply that which is good in man, the Senior Class gratefully dedicates the nineteen-hundred-forty-one issue of the Centralite

Dimensions are limitless; time is endless. Conditions are not invariable; terms are not final"

"Thus the wise man looks into space and does not regard the small as too little nor the great as too much; for he knows that there is no limit to dimension. He looks back into the past and does not grieve over what is far off, nor rejoice over what is near; for he knows that time is without end. He investigates fullness and decay, and does not rejoice if he succeeds, nor lament if he fails; for he knows that conditions are not invariable. He who clearly apprehends the scheme of existence does not rejoice over life, nor repine at death; for he knows that terms are not final."

Seriously pondering these things let us go out with fearless hearts to meet whatever the future holds for us; to build lives of unselfish devotion to God and country; and to acquire, without fail, the habit of immortality.

— Miss Gresham



Our Beloved Principal

Our Central High that's so dear,
A name that we shall ever cheer.



Oh! how we love the dear old Red and Black
And loyalty shall never lack.





MISS EFFIE ANDERSON
Home Economics

MISS LUCY ATCHLEY
History

MISS ALBERTA AHLER
English, Latin

MR. WILLIAM BELL
Mechanical Drawing

MISS AUDREY SUSAN BRICKEY
Office Clerk

MISS MARIE COLLIER
Home Economics

MISS MARGARET DAVIDSON
Home Economics

MR. EDWARD N. DOUGHERTY
Art, Civics

MISS LOUISE DUGGAN
Geography, Civics

MR. N. B. EUBANK
History, Commercial Law

FACULTY



MISS RUTH GARRISON
Physical Education

MISS LULA GIBBS
English

MISS KATE GIBSON
English

MR. CHARLES LEE GRAVES
Physical Education

MISS HASSIE K. GRESHAM
English

MISS NANNIE LEE HICKS
History

MISS LAURA BELL JENNINGS
English

MISS ZENOBIA JONES
History, Music

MRS. NONA LEE KASERMAN
English

MR. EARL KELLER
Mathematics

FACULTY



MR. JAMES R. LARGE
Manual Training

MISS CLARA MASTERSON
English

MISS MARY MAY
Home Economics

MISS LELA PACE MOORE
Latin

MISS MINNIE MYERS
History

MR. BRYCE O. PETREE
Mathematics

MR. H. L. ROBINSON
Economics, Sociology

MRS. FANNIE BLOW W. ROGERS
Librarian

MR. WILLIAM G. ROSE
Civics, English

MR. E. B. ROSS
General Science

FACULTY



MR. ROBERT C. SEARLE
Mathematics

MR. H. T. SEYMOUR
Mathematics

MR. E. M. STUART
Physics, Civics

MISS GLADYS STONE
Commercial

MR. JUDSON TAYLOR
Mathematics

MR. WILLIAM R. TURNER
Latin, English

MRS. LOUISE VAN GILDER
French

MISS MARY WEAVER
Dramatics, English

MISS ANNA WEIGAL
Biology

MR. THOMAS W. WHITEHEAD
Chemistry

MR. O'DELL WILLIS
Music

FACULTY



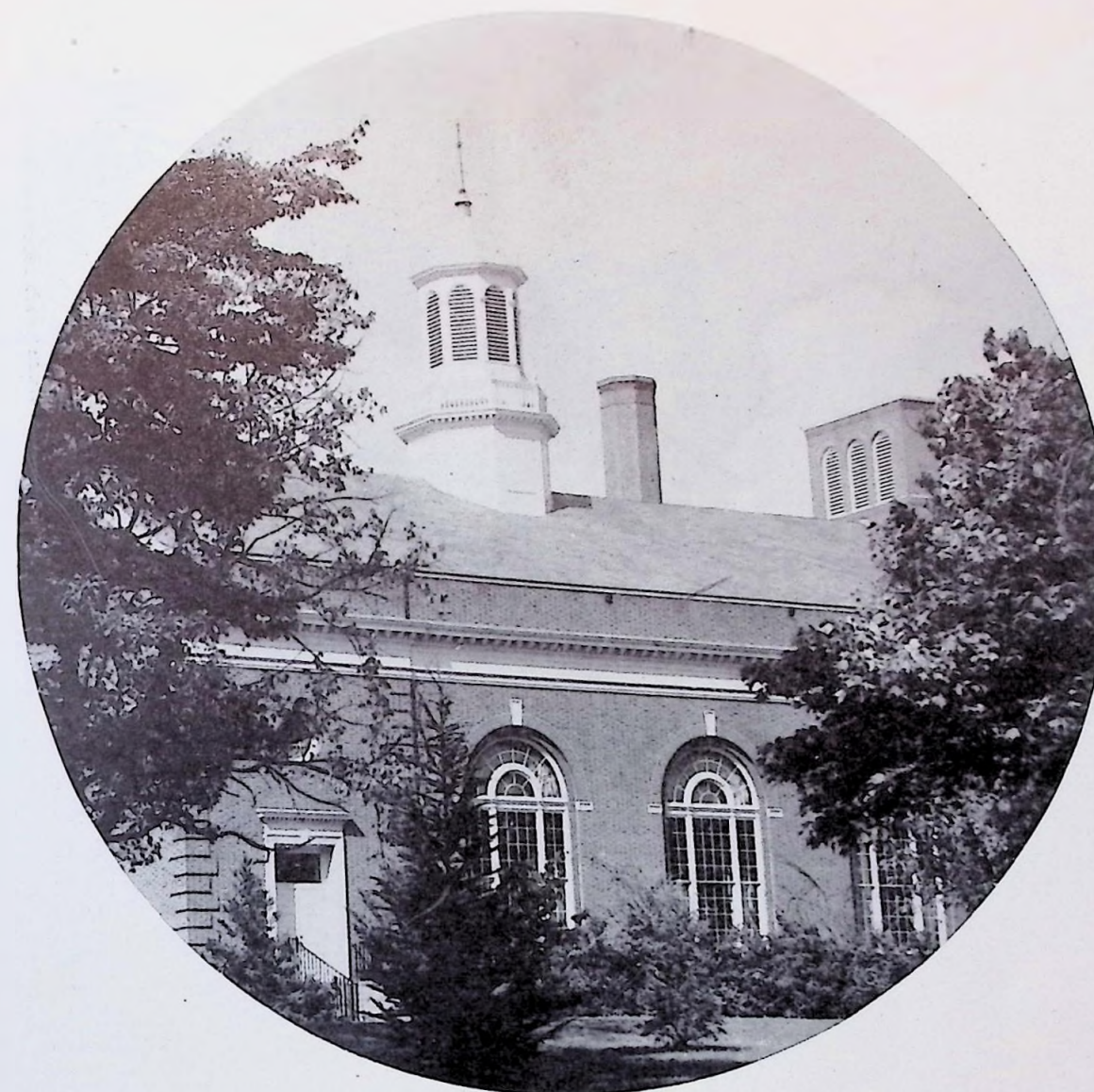
STAFF

FIRST ROW: Eunice Black, Reporter; Betty Hicks, Reporter; Phylis Slaughter, Poet; Frances Bell, Reporter; Margaret Pinkston, Typist; Barbara Hope Haynes, Editor-in-Chief; Barbara Ailor, Assistant Editor; Miss Nannie Lee Hicks, Advisor; Bill Quigg, Business Manager; Billy Wallace, Reporter.

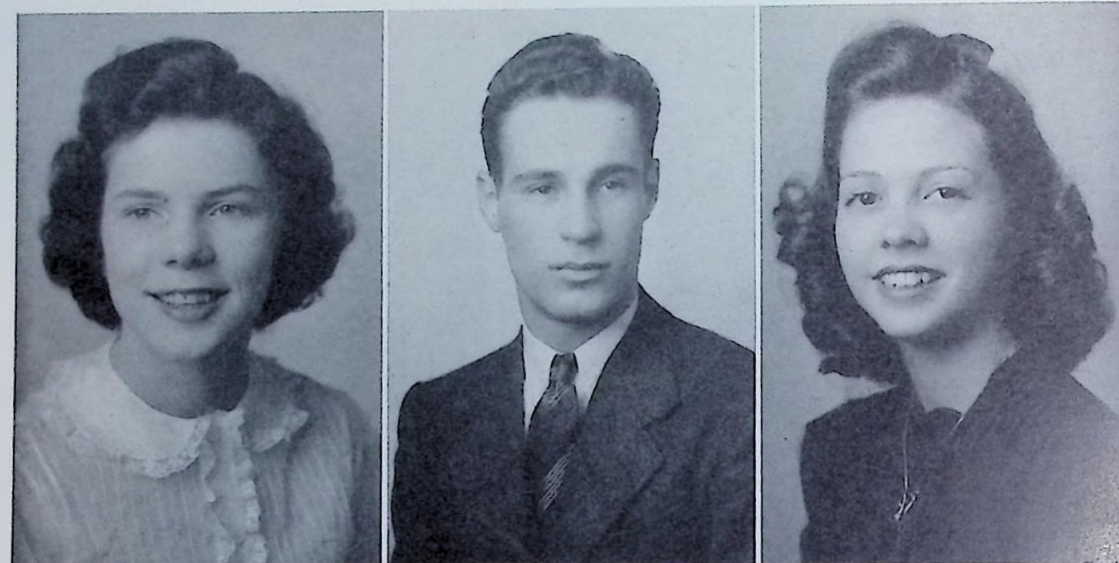
SECOND ROW: Mildred Proffitt, Reporter; Reba Inklebarger, Exchange; Alice Ruth Robinson, Reporter; Betty Hughes, Typist; Catherine Tindall, Reporter; Marilyn Mashburn, Typist; Ada Hampson, Reporter; Iona Wishart, Advertising; Karen Taylor, Reporter; Martha Lee Pearman, Reporter; Patty Hoebner, Reporter.

THIRD ROW: Mr. Thomas Whitehead, Advisor; Ralph Butts, Circulation; J. P. Lane, Circulation; Bobby Heathman, Reporter; Lewis Wade, Advertising Manager; Harold Godfrey, Advertising; Melvyn Lady, Reporter.

FOURTH ROW: Jeral Shawn, Reporter; Grant Whitney, Photographer; Donald Van Hoozier, Reporter; Jimmy Worden, Circulation Manager; John Cooper, Circulation; Howard McCutchan, Advertising Manager; Elton Webb, Sports.



Presenting
THE STUDENT BODY



CLASS OFFICERS

MARY ELIZABETH BROWN.....President
 HOWARD PAINTER.....Vice-President
 JULIE WRENNE.....Secretary and Treasurer

SENIOR CLASS

MARY ACUFF

Daughter of Mr. and Mrs. W. S. Acuff
 Route 12, Knoxville, Tennessee, Gibbs High
 School, Home Ec. Club '37, '38, '39; 4-H
 Club '37, '38; Athletic Club '38, '39; May
 Queen '37, Transferred to Central '40.



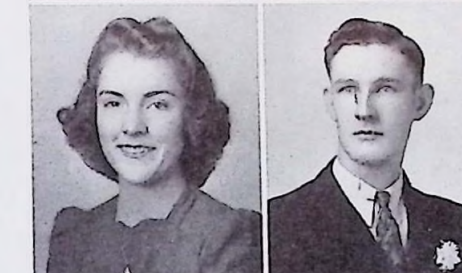
GROVER BEELER

Son of Mr. and Mrs. G. G. Beeler, Kester-
 wood Road, Knoxville, Tennessee, Vice-
 President Freshman Class '37, '39, May Day
 '37, '38, Secretary Sophomore Class '38,
 '39, Hi-Y '38, '39, '40, '41, Football '39,
 '40, '41, Chemistry Club '39, '40, C Club
 '39, '40, '41.



BARBARA AILOR

Daughter of Mrs. Ruth B. Davies, 224
 Lynn View, Fountain City, Tennessee, Home
 Ec. Club '37, '38, '39; Girl Reserves '38,
 '39, '40; Centralite Staff '39, '40, '41;
 Assistant Editor of Centralite '41; Cheer-
 leader '40, '41.



EDGAR BOUNDS

Son of Mr. and Mrs. E. Boyd Bounds, Hol-
 stan Drive, Knoxville, Tennessee, Band '38,
 '39, '40; Chemistry Club '39, '40; 4-H Club
 '39, '40, '41. Hiking Club '40, '41.



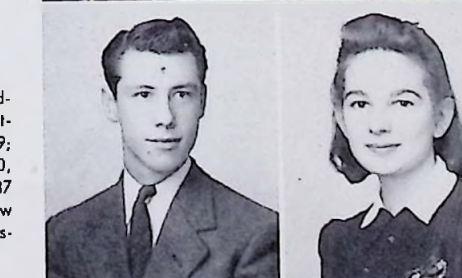
JUNE ANDERSON

Daughter of Mr. and Mrs. T. M. Anderson,
 3303 Grandview Avenue, Knoxville, Tenn.
 Home Ec Club '38, '39, '40, '41; Home Ec
 Camp '40; Girl Reserves '39, '40, '41;
 Treasurer of Girl Reserves '40, '41; Girl
 Reserve Program '39; Girl Reserve Congre-
 sence '40; Treasurer of Commercial Club '40,
 '41; French Play '40. May Day '41.



RALPH E. BUTTS Jr.

Son of Mr. and Mrs. R. E. Butts, 216 Wood-
 row Ave. Fountain City, Tennessee, Basket-
 ball '37, '38; Swimming team '37, '38, '39;
 Golf team '38, '39, '40; Dramatic Club '40,
 '41; Band '37, '38, '39, '40, '41; Tennis '37,
 '38; Amateur Show '37, '38; Variety Show
 '39, '40; Band Concert '38, '39, '40; Chem-
 istry Club '39, '40.



GENEVA ATCHLEY

Daughter of Mr. and Mrs. C. A. Atchley,
 317 Woodrush Ave., Fountain City, Tenn.
 President of Freshman Class '37, '38; Treas-
 urer of Sophomore Class '38, '39; Secretary
 of Junior Class '39, '40; Home Ec Club
 '37, '38, '39; Girl Reserves '38, '39, '40;
 Treasurer of Girl Reserves '38; Delegate to
 G. R. Conference '38; Cheerleader '39, '40,
 '41.



O. B. BASKETTE, Jr.

Son of Mr. and Mrs. O. B. Baskette, Route
 6, Washington Pike, Knoxville, Tennessee,
 Band '37, '38, '39, '40, '41; Carnival '38,
 '39, Minstrel '40, '41, Variety '40, Monitor
 '40, '41, Hi-Y '39, '40, '41, Drum Major
 '40, '41, E. T. E. A. Orchestra '38, '39,
 C. H. S. Orchestra '39, '40, '41; May Day
 '41.



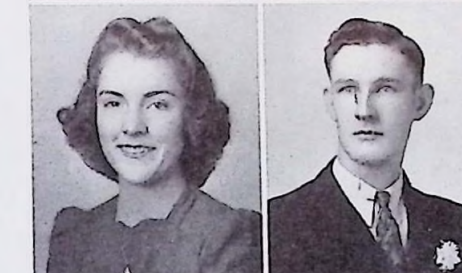
MARY AKRIDGE

Daughter of Mr. and Mrs. I. A. Akridge,
 Route 4; Knoxville, Tennessee, Transferred
 from Carter High School, Carters: Home Ec.
 Club '37, '38; Secretary of Home Ec. Club
 '37, '38.
 Central: Girl Reserves '38, '39, '40, '41;
 Home Ec. Club '39, '40, '41; Treasurer of
 Home Ec. Club '40, '41; Commercial Club
 '40, '41.



JAMES HERBERT BERKLEY

Son of Mr. and Mrs. L. M. Berkley, 107
 Forest Avenue, Fountain City, Tennessee,
 Football '39, '40.



MARIE EDNA ANDERSON

Daughter of Mr. and Mrs. A. R. Anderson,
 Washington Pike Route 6, Knoxville, Tenn.



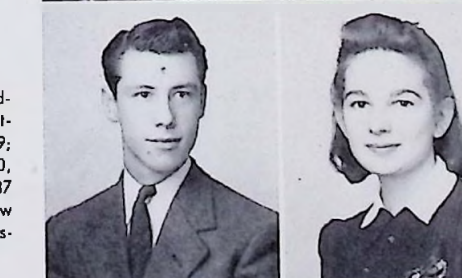
GENE BRIDGES

Son of E. B. Bridges, 114 Luttrell St. Foun-
 tain City, Tennessee, Minstrel '39; Fresh-
 man Play '40.



VIRGINIA ARMSTRONG

Daughter of Mr. and Mrs. Clyde H. Arm-
 strong, Holston River Road, Knoxville, Tenn.
 Dramatic Club '38, '39; Girl Reserves '40,
 '41.



MILDRED ELIZABETH BEAL

Daughter of Mr. and Mrs. S. J. Beal, River-
 side Drive, Knoxville, Tennessee, Girl Re-
 serves '40, '41, Home Ec Club '40, '41,
 Sketch Club '40, '41.



FAITH BEAN

Daughter of Mr. and Mrs. B. F. Bean, 304 Jackson Avenue, Fountain City, Tennessee. Minstrel '38, '39, '40, '41; May Day '38, '39, '40, '41; Girl Reserves '38, '39, '40, '41; Glee Club '38, '39, '40, '41; Hiking Club '40, '41; High School Day '39, '40; Latin Tournament '38; Glee Club Concert '40, '41; Variety Show '39.



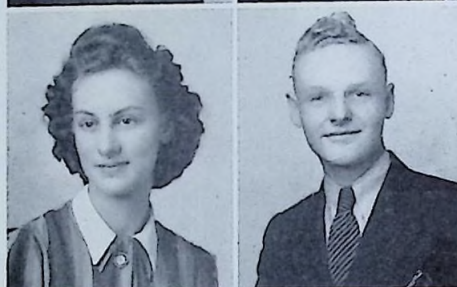
DAVID CARTER

Son of Mr. and Mrs. M. M. Carter, Route 1, Corryton, Tennessee. Transferred from Hall High School '40; 4-H Club '38, '39, '40, '41; Trip to Chicago in 4-H work '37, May Day '38; Junior Play '39; F. F. A. '39, '40, '41.



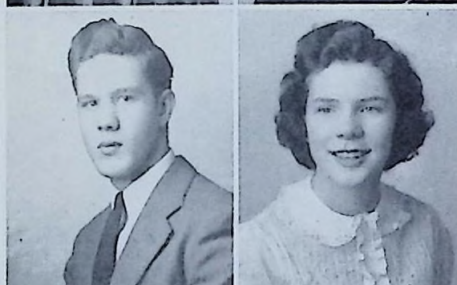
VIRGINIA BOLINGER

Daughter of Mr. and Mrs. Q. M. Bolinger, Route 13, Fountain City, Tennessee. Girl Reserves '40, '41; Senior Society '41.



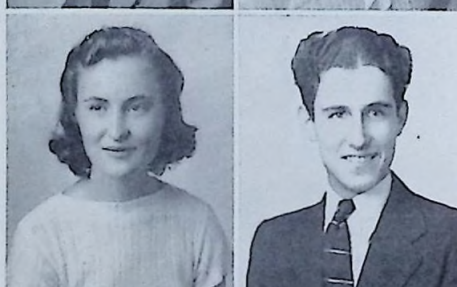
JAMES CAWRSE

Son of Mr. and Mrs. C. M. Cawrse, Tillery Place, Fountain City, Tennessee. Football '37, '38, '39, '40; Hi-Y '37, '38, '39, '40; "C" Club '37, '38, '39, '40.



ELLENORA BUTLER

Daughter of Mr. and Mrs. H. J. Butler, 204 Ninth Ave., Fountain City, Tenn. Junior Honor Society '39, '39; Latin Tournament '38; Girl Reserves '38, '39, '40, '41; Dramatic Club '38, '39; Orchestra '39, '40; Hiking Club '39, '40, '41; May Day '40; Glee Club '40, '41; Band '40, '41; Senior Honor Society '40, '41; Chemistry Club '39, '40.



BILL CLARKE

Grandson of Mr. and Mrs. A. B. Clarke, Belmont Avenue, Fountain City, Tennessee. Hi-Y '40, '41; Football Manager '38, '39, '40; Basketball Manager '38, '39, '40; Chemistry Club '40, '41.



HAZEL LORINE CAPPS

Daughter of Mr. and Mrs. John H. Capps, 312 Tazewell Pike, Fountain City, Tennessee. Library Club '41.



ROBERT WILLIAM CREECH

Son of Mrs. Lula Creech, Mascot, Tennessee. 4-Club '37, '38, '39, '40; Glee Club '40, '41; Minstrel '41; Monitor '40, '41; May Day '41.

FRANCES EVELYN BELL

Daughter of Mr. and Mrs. E. E. Bell, Harrell Hills, Fountain City, Tennessee. Home Ec. Club '38, '39; Girl Reserves '38, '39, '40, '41; Publicity Chairman of Sketch Club '40, '41; Centralite Staff '40, '41.

JOHN CASSADY

Son of Mr. and Mrs. J. D. Cassady, Ross Road, Route 6, Knoxville, Tennessee. Safety Patrol '41.

MARY ELIZABETH BROWN

Daughter of Dr. and Mrs. F. F. Brown, 956 Temple, Knoxville, Tennessee. At Tyson Girl Reserves '38, '39; Outstanding student in Science '39; President of Girl Reserves '38; At Central — May Day Program '40; Chemistry Club '40; Senior Honor Society '40, '41; President of Senior Class '41; D. A. R. Good Citizenship Award '41; Voices of Tomorrow '40; Commencement Speaker '41.

HENRY CHILES

Son of Rev. and Mrs. L. C. Chiles, Corryton, Tenn. Transferred from Gibbs High School '38. Gibbs: Secretary of Athletic Club, Treasurer of F. F. A.; Vice-President of 4-H club; President of Sophomore Class. At Central: 4-H Club '38, '39, '40, '41; President of 4-H Club '38, '39, '40, '41; Hiking Club '40, '41.

MILDRED RUCKER

Daughter of Mr. and Mrs. C. E. Rucker, 4111 N. Broadway, Fountain City, Tenn. '39; Recording Secretary of Home Ec Club Candidate for May Queen '38, '39, '40; May Queen Maid '38, '40; Home Ec. Club '38, '39; Girl Reserves '39, '40, '41; Sketch Club '39, '41; Dramatic Club '40, '41.

JUANITA CLARKE

Daughter of Mr. and Mrs. C. C. Clarke, 203 Garden Avenue, Fountain City, Tenn. May Day '38, '39; Glee Club '38, '39, '41; Girl Reserves '38, '39, '41; Hiking Club '41; Home Ec '39, Dramatics '39.

MARION CLARKE

Daughter of Mr. and Mrs. P. M. Clark, 2211 N. Broadway, Knoxville, Tennessee. Transferred to Edison High and Andrew Jackson High, Miami, Florida. Girl Reserves '37, '38, '39, '40; Dramatic Club '39, '40, '41; Home Ec Club '37, '38; Art Club '40, '41.

JAMES ERNEST COBBLE Jr.

Son of Mr. and Mrs. J. E. Cobble, 207 Woodrow Avenue, Fountain City, Tennessee. Band '37, '38, '39, '40, '41; Orchestra '39, '41; Hi-Y '40, '41; Chemistry Club '39, '40; First Chair Clarinet and Band Captain '39, '40, '41; Variety Show '39, '40, '41; Minstrel '41; E. T. E. A. Orchestra '37, '39, '40.

MARTHA COX

Daughter of Mr. and Mrs. H. T. Cox, 105 Maple Avenue, Fountain City, Tenn. Junior Honor Society '38, '39; Senior Honor Society '39, '40, '41; Orchestra '37, '38, '39, '40, '41; Band '39, '40, '41; Glee Club '40, '41; E. T. E. A. Orchestra '37, '39, '40; Centralite Staff '38, '39, '41; Girl Reserves '38, '39, '40, '41; Chemistry Club '39, '40; Sketch Club '40, '41; Dramatics Club '38, '39; Minstrel '38, '39; Variety Show '38, '39; May Day '39, '40.

JOHN HARRISON COOPER

Son of Mr. and Mrs. K. S. Cooper, Powell Station, Tennessee. Junior Honor Society '38, '39; Senior Honor Society '40, '41; Band '37, '38, '39, '40, '41; Hiking Club '39, '40; Chemistry Club '41; Monitor '40, '41; Latin Tournament '38, '39, '40, '41; Centralite Staff '40, '41; King of May '41.

LILLIAN COUCH

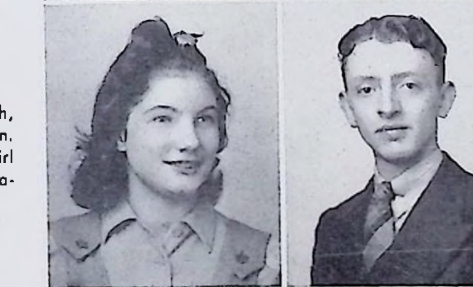
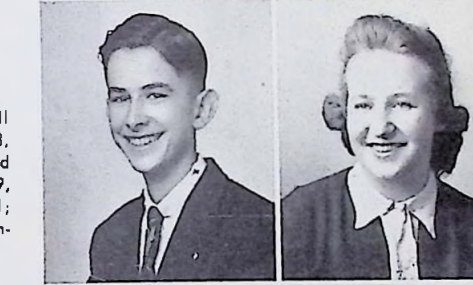
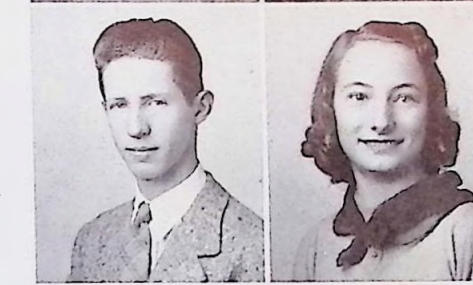
Daughter of Mr. and Mrs. J. H. Couch, 301 Woodrow Ave., Fountain City, Tenn. Home Ec Club '37, '38; Sophomore Girl Reserves '38, '39; Sketch Club '40, '41; Dramatic Club '40, '41.

GORDON A. DEAN

Son of Mr. and Mrs. Joseph G. Dean, Ridgewood Road, Fountain City, Tennessee. Transferred from Rockville High School, Rockville, Conn. '39. Chemistry Club '40; Movie Projection Staff '40; Hiking Club '40; Skiing Club '37, '38; Sports Club '38.

HELEN ELIZABETH DEWINE

Daughter of Mr. and Mrs. Pat Dewine, Springhill Road, Knoxville, Tenn. Monitor '40, '41.



MARGARET ANNE COKER

Daughter of Mr. and Mrs. M. B. Coker, 2909 E. Magnolia Avenue, Knoxville, Tenn. Girl Reserves '39, '40, '41; Home Ec Club '38, '39, '40, '41; Home Ec Camp '38, '39; Glee Club '39, '40, '41; French Play '40; Minstrel '40, '41; High School Day '40; Girl Reserve Conference '39; May Day '41.

FAYE MARIE COOK

Daughter of Mr. and Mrs. John Cook, 620 Fourth Avenue, Fountain City, Tennessee. May Day '38, '40, '41; Home Ec Club '38, '40, '41; Girl Reserves '39, '40, '41; Variety Show '39; Junior Honor Society '39; French Pageant '40; Dramatic Club '41; Hiking Club '41; Senior Honor Society '41; Minstrel '41.

F. D. COLTHARP, Jr.

Son of Mr. and Mrs. R. D. Coltharp, Transferred from Athens High School, Athens, Alabama. C. H. S. Chemistry '40, '41.

MILDRED J. CROWDER

Daughter of Mr. and Mrs. J. O. Crowder, Harris Road, Knoxville, Tennessee. Monitor '40, '41.

PHILLIP DANIEL

Son of Mr. and Mrs. O. D. Daniel, Route 12, Knoxville, Tennessee.

PAULINE DUNKLE

Daughter of Mrs. Lucy Dunkle, Route 12, Knoxville, Tennessee.

DOROTHY DYER

Daughter of Mrs. Marie Dyer, Millertown Pike, Knoxville, Tennessee. Sketch Club '40, '41; Chemistry Club '40, '41; Home Ec Club '37, '38; Girl Reserves '38, '39, '40, '41.

ALMA CLUCK

Daughter of Mr. and Mrs. Fain V. Cluck, 203 Caldwell Ave. Fountain City, Tennessee. Girl Reserves '38, '39, '40, '41; Vice-President Girl Reserves '39, '40; President Girl Reserves '40, '41; Delegate to G. R. Camp '40; Delegate to G. R. Conference '40; Home Ec Club '38, '39, '40, '41; Recording Secretary of Home Ec Club '39; President Home Ec Club '40; Corresponding Secretary of Home Ec Club '41; Delegate to Home Ec Convention '40; Chemistry Club '41; Glee Club '38, '39; Variety Show '38; French Play '39; Junior Honor Society '38, '39; Senior Honor Society '40, '41; President of Inter-Club Council Girl Reserves '41; May Day '41.

CHARLES EVANS

Son of Mr. and Mrs. L. C. Evans, 617 Woodrow Avenue, Junior Honor Society '38, '39; Senior Honor Society '40, '41; Football '39, '40.

MARY LOUISE EVERETTE

Daughter of Mr. and Mrs. Joe Everette, Route 2, Carrolton, Tennessee, Glee Club '40, '41; Cafeteria Club '39, '40, '41; Variety Show '41.

LUTHER F. GHEEN Jr.

Son of Luther F. Gheen, Route 7, Knoxville, Tennessee, 4-H Club '37, '38, '39, '40, '41; Band '37, '38.

ANNE IGNATIA FITZGERALD

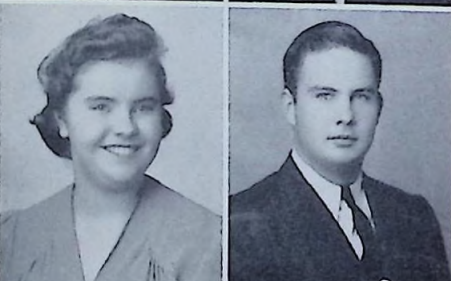
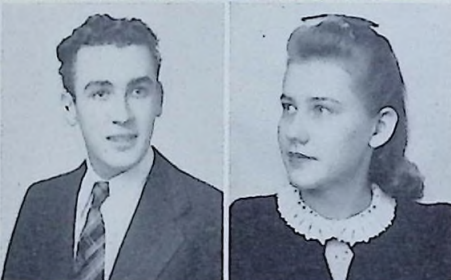
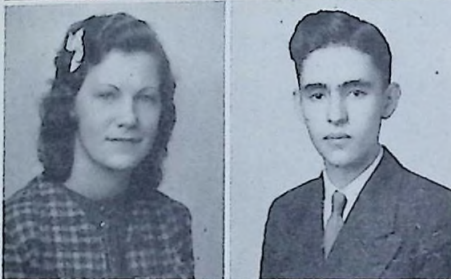
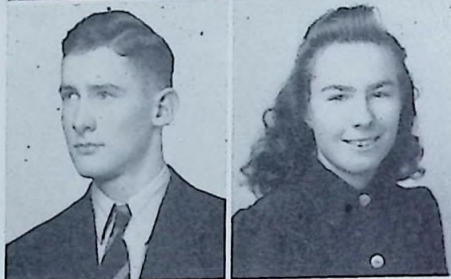
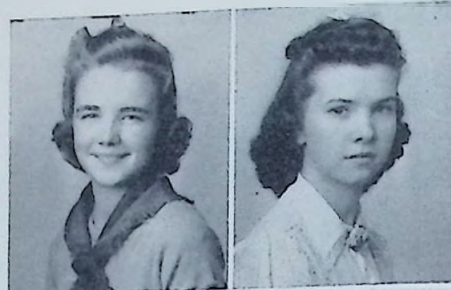
Daughter of Mrs. J. P. Fitzgerald, Ball Camp Pike, Route 7.

T. L. GREENE Jr.

Son of Mr. and Mrs. T. L. Greene, Route 8, Knoxville, Tennessee, 4-H Club.

KATHLEEN FOUST

Daughter of Mrs. Adria Foust, Route 6, Holston Drive, Knoxville, Tennessee, Junior Honor Society '38, '39; Senior Honor Society '40, '41; Commercial Club '40, '41.



BILLIE CLARK

Daughter of Mr. and Mrs. W. L. Clark, Tazewell Pike, Knoxville, Tennessee, Girl Reserves '38, '39, '40, '41; Home Ec Club '38, '39; May Day '38, '40.

MARGIE ELLIS

Daughter of Mr. and Mrs. L. P. Ellis, Carrolton, Tennessee, Junior Honor Society '38, '39; Senior Honor Society '40, '41; Dramatics Club '39, '40; Commercial Club '40, '41.

EDWARD FELKNOR Jr.

Son of Mr. and Mrs. E. M. Felknor, 3120 Freemason St., Knoxville, Tennessee, Junior Honor Society '39; Latin Tournament '39; Senior Honor Society '40, '41; Vice-President Senior Honor Society '40, '41.

ROXANNA FANSLER

Daughter of Mr. and Mrs. L. F. Fansler, Cedar Heights, Fountain City, Tennessee, Home Ec Club '38; Glee Club '39, '40; Representative to East Tennessee Chorus at U. T. '39; Girl Reserves '39, '40; The Big Revue '39; Minstrel '39.

PRESTON GIBSON

Son of Mr. and Mrs. Robert Gibson, Holston Hills, Knoxville, Tennessee, Band '38, '39, '40; Chemistry Club '39, '40, 4-H Club '39, '40, '41; Hiking Club '40, '41.

DOROTHY FOLEY

Daughter of Mr. and Mrs. L. T. Foley, Route 1, Knoxville, Tennessee, Girl Reserves '38, '39, '40, '41; Monitor '39, '40; Hiking Club '39, '40; May Day '38.

JUANITA L. FOWLER

Daughter of Mr. and Mrs. E. B. Fowler, 200 Mingle Avenue, Knoxville, Tennessee.

ADA HAMPSON

Daughter of Mrs. Louella L. Hampson, Ebenezer Road, Knoxville, Tennessee, At Farragut — Glee Club '37, '38, '39; Girl Reserves '37, '38, '39; Candidate for Festival Queen '38; Winter Carnival '39; Dramatic Club Play '38; At Central — Girl Reserves '39, '40, '41; Monitor '40, '41; Centralite Staff '40, '41; May Day '41.

BLAKE KECK

Son of Mr. and Mrs. Sherman Keck, Inskip, Tennessee, Patrol '38, '39, '40; Monitor '39, '40; Glee Club '40, '41; Minstrel '41; Basketball '39, '40, '41; Play '40, May Day '41.

BARBARA HOPE HAYNES

Daughter of Mrs. W. H. Haynes, Ridgewood Road, Fountain City, Tennessee, Home Ec Club '37, '38, '39; Minstrel '38; Girl Reserves '38, '39, '40, '41; President Girl Reserves '38, '39; Dramatic Club '38, '39, '40, '41; Debating Club '39, '40, '41; Centralite Staff '39, '40, '41; Alumni Editor of Centralite '39, '40; Editor of Centralite '40, '41; Citizenship Essay Contest (1st place) '41; Senior Honor Society '41; May Day '39, '41; Monitor '39, '40, '41; Forensic Contest '40; High School Day '41; Office Monitor '40, '41.

HENRY CLAY LASSING, IV

Son of Mr. and Mrs. H. C. Lassing, III, 615 Tazewell Pike, Fountain City, Tennessee, Junior Honor Society '38, '39; Latin Tournament '39; Treasurer of Debating Club '40, '41; Treasurer Dramatic Club '40, '41; Band Color Guard '40, '41; Senior Honor Society '40, '41; Chemistry Club '41; Minstrel '41; May Day '41.

MARGARET HENRY

Daughter of Mr. and Mrs. J. E. Henry, 710 Maple Avenue, Fountain City, Tenn.

WILBUR B. LAWSON

Son of Mr. and Mrs. F. W. Kemp, Villa Road, Fountain City, Tennessee, Football '38, '39, '40; Womanless Wedding '38; "C" Club '38, '39, '40.

BETTY HUGHES

Daughter of Mr. and Mrs. R. C. Hughes, 4311 Kingston Pike, Knoxville, Tennessee, Girl Reserves '38, '39, '40, '41; Treasurer Girl Reserves '39, '40; Commercial Club '40; Centralite Staff '38, '39, '40, '41; Glee Club '40, '41; Candidate May Queen '39, '40, May Day Maid '39; Publicity Chm. Girl Reserves '40, '41; Variety Show '40; Showboat Minstrel '41; Junior Honor Society '38, '39; Senior Honor Society '40, '41.



HARRY JONES

Son of Mr. and Mrs. Harry Jones, 501 Third Avenue, Fountain City, Tennessee.

HELEN HARRELL

Daughter of Mr. and Mrs. W. E. Harrell, 3524 Grandview Avenue, Knoxville, Tenn., Home Ec Club '38, '39, '40, '41; Girl Reserve '39, '4, '41; Junior Honor Society '38, '39; Commercial Club '39, '40, '41; Senior Honor Society '41; Sketch Club '40, '41.

J. P. LANE

Son of Mr. and Mrs. Thomas R. Lane, 202 Gibbs Road, Fountain City, Tennessee, May Day '38; Junior Honor Society '38, '39; Senior Honor Society '40, '41; Hi-Y '40, '41; Chemistry Club '40; Monitor '40, '41; Centralite Staff '40, '41.

ALICE ELIZABETH HEIFNER

Daughter of Mr. and Mrs. H. A. Heifner, Route 1, Wilson Road, Knoxville, Tennessee, Orchestra '37, '38, '39, '40, '41; Concert Master of Orchestra '40, '41; Home Ec Club '38, '39, '40; Art Club '41; Glee Club Orchestra Concert '38, '39, '41; Representative at E. T. E. A. Orchestra '38, '39, '40; May Day '41.

ROBERT W. LAWSON

Son of Mr. and Mrs. H. A. Lawson, Route 13, Halls Cross Roads, Fountain City, Tennessee F. F. A. '38, '39.

BETTYE HENSON

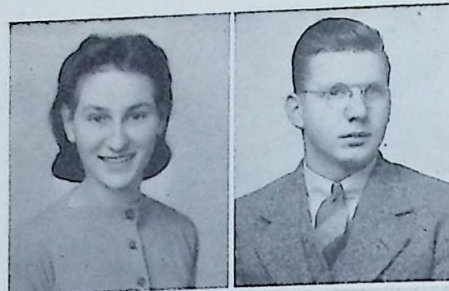
Daughter of Mr. and Mrs. N. B. Henson, Route 15, Knoxville, Tennessee, Girl Reserves '37, '38, '39; Dramatic Club '37, '38, '39; Glee Club '37, '38, Home Ec Club '39, '40. (Transferred Student)

MARGARET HUNTER

Daughter of Mr. and Mrs. Henry Hunter, Fountain Avenue, Fountain City, Tennessee, Home Ec Club '37, '38, '39; Girl Reserves '38, '39, '40, '41; May Day '38, '39, '40, '41; Minstrel '37, '38, '40; Variety Show '39; Glee Club '40, '41; Dramatics Club '38, '39, '40; Debating Club '38, '39.

VIOLA GALLE

Daughter of Mr. and Mrs. Paul Galle, 2209 N. Broadway, Knoxville, Tennessee, Minstrel '38, '39; Variety Show '39; Junior Honor Society '38, '39, '40; Senior Honor Society '40, '41; Treasurer of Senior Honor Society '40; Glee Club '39, '40, '41; President of Glee Club '39; Latin Tournament '37; French Tournament '41; Girl Reserve '38, '39, '40, '41; May Day '40, '41.



ALFRED HELVEY

620 Morgan St., Knoxville, Tennessee, Mr. J. C. Helvey, Guardian.



MARY ALICE GARVEY

Daughter of Mr. and Mrs. W. W. Garvey, Brukin Road, Knoxville, Tennessee, Home Ec Club '37, '38, '39, '40; Junior Honor Society '37, '38, '39, '40; Secretary of Senior Honor Society '40; Latin Tournament '38; Girl Reserves '38, '39, '40, '41; Glee Club '38, '39, '40, '41; May Day '39; Variety Show '38; Minstrel Show '41; Chemistry Club '41; May Day Attendant '41.



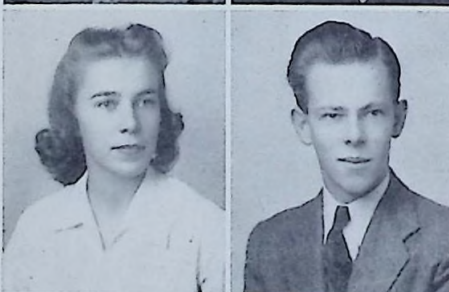
PAUL HENSON

Son of Mr. and Mrs. Ernest Henson, Third Avenue, Fountain City, Tennessee, Junior Honor Society '37, '38, '39; Senior Honor Society '41; Hiking Club '39, '40, '41; Monitor '40, '41.



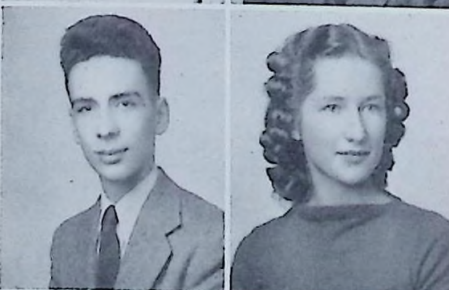
VIRGINIA WYNN GIBSON

Daughter of Mrs. T. T. Gibson, 138 Hill-Club '37, '38; Girl Reserves '38, '39, '40, crest, Fountain City, Tennessee, Home Ec '41; Glee Club '37, '38, '39, '40, '41; Commercial Club '40, '41; May Day '39, '41; Latin Tournament '38; High School Day '40, '41.



SUMMERS HINSHAW

Son of Mr. and Mrs. Summers Hinshaw, Fountain City, Tennessee, Band '38, '39, '40, '41; Variety Show '39, '40, '41; Orchestra '40; Chemistry Club '40; Hiking Club '41; May Day '37; Movie Operator '41; Senior Carnival '39; Minstrel '39, '41; May Day '41.



ANN GOANS

Daughter of Mr. and Mrs. J. W. Goans, 319 Jackson Avenue, Fountain City, Tenn. May Day '38, '40.



JACK HAMLEY

Son of Mr. and Mrs. F. A. Hamley, 3900 North Broadway, Knoxville, Tenn. Monitor '38, '39.



HELEN GALLOWAY

Daughter of Mr. and Mrs. A. A. Galloway, Boyds Bridge Pike, Knoxville, Tenn.



JAMES A. HENDERSON

Ward of Rev. Fred S. McCorkle, Cedar Lane, Fountain City, Tennessee.



VERNA GAULT

Daughter of Mr. and Mrs. J. V. Gault, 117 Belmont Avenue, Fountain City, Tennessee, Commercial Club '40, '41.



BILLY HILL

Son of Mr. and Mrs. J. H. Hill, 250 Gibbs Road, Fountain City, Tennessee, 4-H Club '38, '39, '40, '41; Senior Carnival '39.



WILLIE RUTH GLOVER

Daughter of Mr. and Mrs. A. M. Glover, 243 Conner Avenue, Fountain City, Tenn. Secretary of Freshman Class '38; Girls Glee Club '38; Junior Program '38; Latin Tournament '38, '39; Home Ec Club '38; Glee Club '39, '40; Variety Show '39; High School Day '39; Hiking Club '40, '41; Girl Reserves '41; Junior Honor Society '39, '40; Senior Honor Society '41; Monitor '40, '41; Variety Show '40, Minstrel '40; May Day '41.



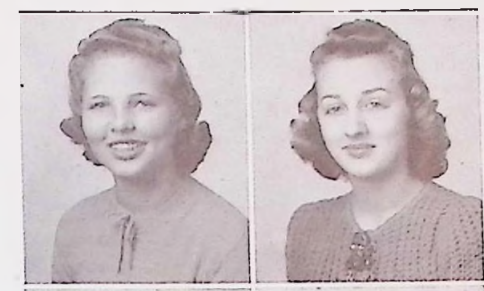
MILDRED GREER

Daughter of Mr. and Mrs. A. C. Greer, 614 Hault Avenue, Knoxville, Tennessee, May Day '38, '39; Junior Honor Society '39; Senior Honor Society '40, '41; Minstrel '41.



HELEN M. HODGES

Daughter of Mr. and Mrs. W. M. Hodges, Second Avenue, Inskip, Tennessee.



SHIELDS O. LEWIS

Son of Mr. and Mrs. C. A. Lewis, Inskip, Tennessee, Monitor '37, '38.



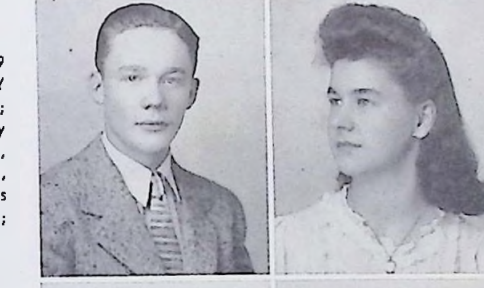
TREVA LaVERNE ISON

Daughter of Mr. and Mrs. D. L. Ison, 1010 Maple Avenue, Fountain City, Tennessee, At Christenberry — Orchestra '38; Girl Reserves '38; Typing Staff '38; At K. H. S. — Tennis Club '39; At Central — French Pageant '40; Commercial Club '40; Girl Reserves '40, '41.



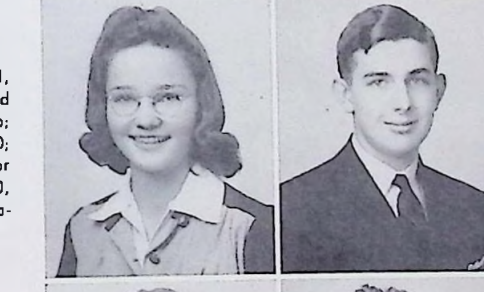
LILLARD LUTTRELL, Jr.

Son of Mr. and Mrs. A. L. Luttrell, 2609 Linden Avenue, Knoxville, Tennessee, Hi-Y '39, '40, '41; Band '37, '38, '39, '40, '41; Orchestra '37, '38, '39, '40, '41; Chemistry Club '39, '40; Variety Show '38, '39, '40, '41; Minstrel '38, '41; Debating Club '39, '40; Dramatic Club '39, '40; Womanless Wedding '38; May Day '38, '39, '40, '41; Representative to E. T. E. A. '39, '40.



MARTHA ISBELL

Daughter of Mr. and Mrs. J. B. Isbell, Route 9, Knoxville, Tennessee, Transferred from Christenberry: Officer in Civics Club; Glee Club '38; Central: Glee Club '39, '40; Glee Club concert '39, '40; Junior Honor Society '39, '40; Senior Honor Society '40, '41; Chemistry club '39, '40; French Tournament '41.



KENNETH McGLOTHIN

Son of Mrs. E. M. McGlothlin, Route 5, Knoxville, Tennessee



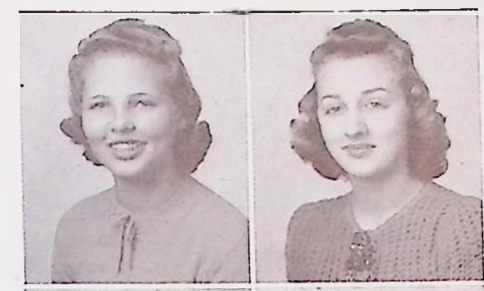
JOHNNIE MAE JETT

Daughter of Mr. and Mrs. John Jett, 240 Conner Avenue, Fountain City, Tennessee, Home Ec Club '37, '38; Glee Club '39, '40, '41; Minstrel '39; Girl Reserves '40, '41.



ELEANOR MARION HOLMES

Daughter of Mrs. Mertie Holmes, Fountain City, Tennessee, C. H. S. Chorus '38, '39, '40; Girl Reserves '38, '39, '40, '41; Home Ec Club '37, '38, '39, '40; Delegate to Girl Reserve Conference '39; Minstrel '40; High School Day '40; Latin Tournament '38; May Day '40; Junior Honor Society '38, '39; Senior Honor Society '40, '41; Sketch Club '40, '41; Commercial Club '40, '41; French Pageant '39.



EVA MARIE HUBBS

Daughter of Mr. and Mrs. P. P. Hubbs, Route 1, Knoxville, Tennessee, Commercial '40, '41.



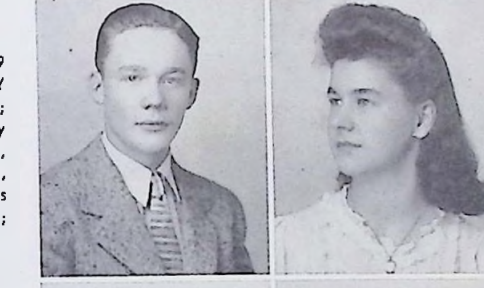
MURRAY WOODROW LOY

Son of Mr. and Mrs. M. L. Loy, 503 E. Oakhill, Knoxville, Tennessee, Football '38, '39, '40; Basketball '38; "C" Club '38, '39, '40, '41; Chemistry Club '37; Hiking Club '39, '40; Womanless Wedding '38; Hi-Y '38, '39, '40, '41.



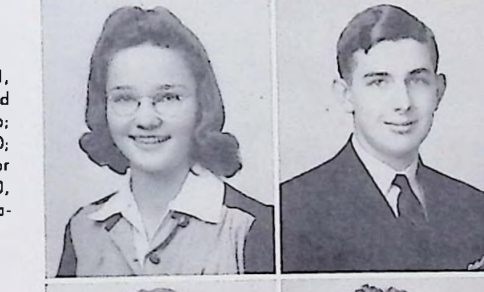
REBA JUNE INKLEBARGER

Daughter of Mr. and Mrs. J. M. Inklebarger, Fountain City, Tennessee, Major Bowes Program '37; Minstrel '38; Junior Class Program '38; May Day '38, '39, '40, '41; Junior Honor Society '38, '39; Secretary of Junior Honor Society '38, '39; Senior Honor Society '40, '41; Home Ec Club '37, '38, '39, '40; Glee Club '37, '38; Girl Reserves '38, '39, '40, '41; President of Sophomore Class '38, '39; Band '39, '40, '41; Program Chairman of Girl Reserves '38, '39; Latin Tournament '38; Orchestra '39, '40; Drum Majorette '39, '40, '41; Dramatics Club '38, '39, '40; Junior Senior Class Play '40; Centralite Staff '40, '41; Commercial Club '40, '41.



HUGH HOWARD McCUTCHAN Jr.

Son of Mr. and Mrs. H. H. McCutchan, 213 Garden Avenue, Fountain City, Tennessee, Senior Honor Society '40, '41; Junior Honor Society '38, '39; Hi-Y Club '40, '41; May Day '39; Hiking Club '39, '40, '41; Chemistry Club '40; Movie Operator '40, '41; Centralite Staff '39, '40, '41; Adv. Mgr. Centralite '41.



FAY JEFFERS

Daughter of Mr. and Mrs. M. T. Jeffers, Colonial Circle, Fountain City, Tennessee, Transferred from Park Junior '38; French Pageant '39; Girl Reserves '39, '40.



EDNA JINKS

Daughter of Mr. and Mrs. R. M. Jinks, 4300 Lyons View Pike, Knoxville, Tennessee, Girl Reserves '39, '40, '41; Home Ec Club '40, '41; May Day '38.



EVA JOHNSON

Daughter of Mr. and Mrs. J. A. Johnson, Route 1, Mascot, Tennessee, Commercial Club '41.

ROBERT M. McGHEE Jr.

Son of Mr. and Mrs. R. M. McGhee, Route 5, Knoxville, Tennessee, Junior Honor Society '38, '39; Senior Honor Society '41; Commercial Club '40, '41; Moving Picture Operator '39, '40, '41.

RACHAEL JONES

Daughter of Mr. J. L. Jones, Millertown Society '38, '39, Sophomore Girl Reserves Pike, Knoxville, Tennessee, Junior Honor '39.

JACK MARSHALL

Son of Mr. and Mrs. W. H. Marshall, 314 Pettway Ave., Knoxville, Tennessee, Transferred from South Knoxville Junior High, At Central: Monitor '40, '41; Senior Honor Society '40, '41.

MILDRED KEY

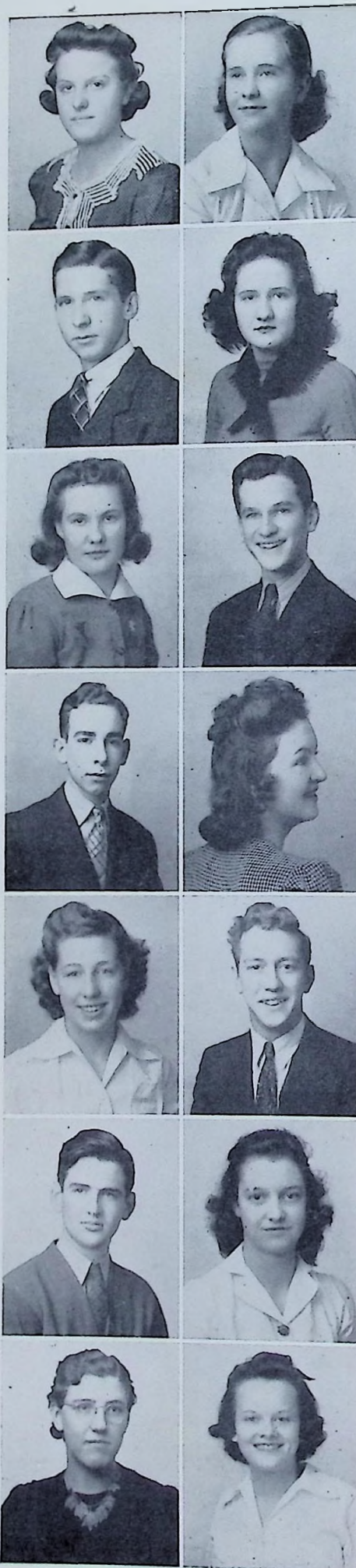
Daughter of Mrs. Iva Key, A Street, Fountain City, Tennessee, Glee Club '38; May Day '38; Radio Program '39; Minstrel '38; Chemistry Club '39.

GLEN A. MEREDITH

Son of Mr. and Mrs. R. K. Meredith, Inskip, Tennessee.

ROSALIE KIRBY

Daughter of Mr. and Mrs. C. D. Kirby, 520 Lilac Street, Knoxville, Tennessee, Library Club '38, '39, '40, '41.



HELEN JONES

Daughter of Mr. and Mrs. W. Z. Jones, Fountain City, Tennessee, Home Ec. Club '37, '38, '39; Commercial Club '39, '40; Glee Club '39, '40, '41.

SUSAN CHANDLER JONES

Daughter of Mr. and Mrs. Harry K. Jones, 501 Third Avenue, Fountain City, Tennessee, Home Ec. Club '38, '40, '41; Girl Reserve Club '37, '39, '40, '41; Commercial Club '39, '40, '41; May Day '37, '39, '40, '41; Junior Honor Society '41; Glee Club '38, '39; High School Day '39; Glee Club Concert '39.

ROBERT MCSWEEN

Son of Mr. and Mrs. J. J. McSween, 207 Adair Drive, Fountain City, Tennessee, Transferred from Hall Fletcher Jr. High School, Asheville, North Carolina '39; President of Hi-Y '38; Vice-President Dramatic Club '39, '40; Debating Club '39, '40.

MARGARET JO KEITH

Daughter of Mr. and Mrs. Charles Keith, Knoxville, Tennessee, Route 7, Latin Tournament '38, '39, '40; Junior Honor Society '39, '40; Senior Honor Society '41.

DAVID MASSENGILL

Son of Mr. and Mrs. R. T. Massengill, 323 Overton Place, Knoxville, Tennessee, Football '38, '39; Basketball '39; Hiking Club '40, '41; Chemistry Club '40, '41.

BLANCHE KING

Daughter of Mr. and Mrs. R. W. King, Cohulla, Georgia, Girl Reserves '40, '41, Chemistry Club '40, '41.

PAT KUNKEL

Daughter of Mr. and Mrs. E. L. Kunkel, 404 Garden Avenue, Fountain City, Tenn. Transferred from K. H. S.; May Day '39; Hiking Club '38; Girl Reserves '39, '40.

HESTER LANSDEN

Daughter of Mrs. Bertha Landsden, Route 12, Knoxville, Tennessee

ALBERT MURRIAN

Band '37, '38, '39, '40, '41; Orchestra '37, '38, '39, '40, '41; Safety Patrol '37, '39; Football '39; Minstrel '37, '38, '39, '40, '41; Variety Show '39; Womanless Wedding '38; May Day '38, '39, '40, '41; Carnival '38.

PATTI SUE LEWIS

Daughter of Mr. E. T. Lewis, Orrum, North Carolina, Transferred from Park Junior '38; Variety Show '39; Girl Reserves '38, '39, '40, '41; Home Ec. Club '39, '40, '41; Secretary of Home Ec. Club '41; Representative to State Home Ec. Convention '40; May Queen Candidate '39, '40; May Day '39, '41; Second May Day Maid '40; Cheerleader '39, '40; Band Sponsor '40, '41.

RICHARD NOEL

Son of Mr. and Mrs. R. S. Noel, Mascot, Tennessee, Transferred from Mascot Junior High — Safety Patrol; Class Play; Transferred to Carter High School Class play '39; Varsity Baseball '39; Monitor '38, '39; President of Student Body '39, '40; Transferred to Central '40.

AGNES LOUISE LINEBAUGH

Daughter of Mr. and Mrs. Addie Linebaugh, 403 Second Avenue, Fountain City, Tenn. May Day '38; Home Ec. Club '38, '39; Girl Reserve '39, '40; Varsity Show '39, '40, '41; Chemistry Club '40; Monitor '40; Minstrel '41; Glee Club '41; French Pageant '40.

JACK NORRIS Jr.

Son of Mr. and Mrs. Jack Norris, 1607 North Hills Blvd. Knoxville, Tennessee, Band '37, '38, '39, '40, '41; Hi-Y '39, '40, '41; Minstrel '40; Womanless Wedding '39; May Day '38; Basketball '40, '41; Treasurer of Hi-Y '40, '41.

DEE LUETHKE

Daughter of Mrs. Goldie Leuthke, Route 2, Fountain City, Tennessee, Treasurer Freshman Class '38, May Day Maid '38, '39; May Day Candidate '40; Home Ec. Club '38, '39, '40, '41; Girl Reserves '39, '40, '41.



CHARLES RALPH MOFFETT

Son of Mr. and Mrs. J. A. Moffett, 406 N. Gay Street, Knoxville, Tennessee, Transferred from Jefferson City High School '40; President Sophomore Class '38, '39; Vice-President Sophomore Literary Society '38, '39; "Jeffersonian" Staff '38, '39; President Junior Honor Society '39, '40; Treasurer Beta Club '39, '40; Vice-President Junior Class '39, '40; Football '38, '39; Basketball '38, '39, '40; Beta Club Play '39; At Central: Football '40; Basketball '40; Debating Club '40, '41; Dramatic Club '40, '41; Minstrel '41; Sketch Club '41; Contest Play '41.

AUBRA LAY

Daughter of Mr. and Mrs. Curtis Lay, 602 Cedar Lane, Fountain City, Tennessee, May Day '38; Glee Club '39; Monitor '39, '40; Minstrel '41; Girl Reserves '41; Debating Club '41; Variety Show '40.

EUGENE MYNATT Jr.

Son of Mr. and Mrs. E. E. Mynatt, 302 Seventh Avenue, Fountain City, Tennessee, Band '36, '37.

VELMA LINDSEY

Daughter of Mr. and Mrs. W. B. Lindsey, Mascot, Tennessee, Glee Club '40, '41.

RALPH M. NORMAN

Son of Mr. and Mrs. H. A. Norman, Tazewell Pike, Knoxville, Tennessee, Hi-Y Club '40, '41.

LEOLA LINKOUS

Daughter of Mr. and Mrs. C. L. Linkous, Route 1, Knoxville, Tennessee, Powell High School: Library Club '37, '38; Home Ec. Club '37, '38, '39; Glee Club '37, '38, '39; Central High School: Monitor '40, '41, French Tournament '41; Senior Honor Society '41.

JANE MACHAMER

Daughter of Mr. and Mrs. C. L. Machamer, Route 5, Knoxville, Tennessee, Home Ec. Club '37, '38, '39; Girl Reserves '38, '39, '40, '41; May Day '38, '39, '40; Secretary Girl Reserves '38, '39.

STELLA MAE MALLIBY

Daughter of Mr. and Mrs. Lewis E. Malliby, Route 2, Knoxville, Tennessee, Chemistry Club '41.

HOWARD PAINTER

Son of Mr. and Mrs. J. O. Painter, 1028 Irwin Street, Knoxville, Tennessee, At K. H. S. — Vice-President of Freshman Class '37; Football '37, '38; Track Team '37, '38; At C. H. S. — Football '39, '40; Vice-President Senior Class '41; "C" Club '39, '40, '41.

JEANNE Mac WHIRTER

Daughter of Mr. and Mrs. D. A. Mac Whirter, 2600 N. Broadway, Knoxville, Tennessee, Home Ec Club '37, '38; Girl Reserves '38, '39, '40; Monitor '40, '41; Sketch Club '40, '41; Dramatic Club '38, '39, '40, '41; French Pageant '40.

JIM PAYNE

Son of Mr. and Mrs. Charles H. Payne, 302 Second Avenue, Fountain City, Tenn. Basketball '39, '40; Football '38, '39, '40 "C" Club '38, '39, '40, '41.

HAZEL LEE McAFEE

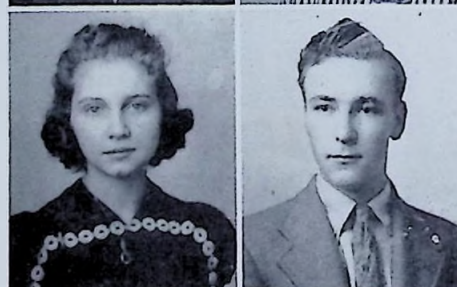
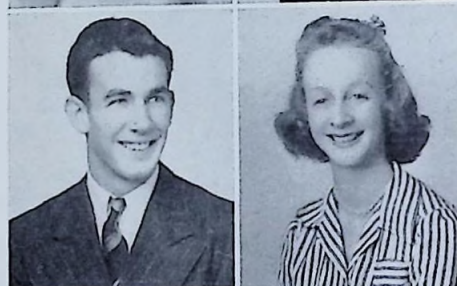
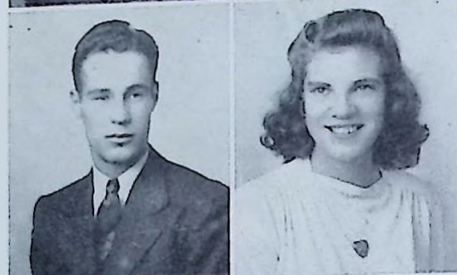
Daughter of Mr. and Mrs. J. A. McAfee, 2766 Western Avenue, Knoxville, Tennessee, 4-H Club '38, '39; Safety Patrol '39; Minstrel '37, '41; Dramatics Club '41; Girls Chorus '41; Cafeteria Club '41; Variety Show '41.

CECIL PITTS

Son of Mr. and Mrs. Joe Pitts, Millertown P.ke, Knoxville, Tennessee.

ILLA MILLER

Niece of Mr. and Mrs. Frank Witt, Ellistown Pike, Route 5, Knoxville, Tennessee.



EARNEST OGG Jr.

Son of Mr. and Mrs. E. R. Ogg, 219 Highland Drive, Fountain City, Tennessee, Hi-Y Club '40; Monitor '39; Color Guard in Band '40, '41; Secretary of 4-H Club '37, '38, '39, '40; May Day '41.

WANDA ALEENE MAPLES

Daughter of Mr. and Mrs. B. O. Maples, 612 Fifth Avenue, Fountain City, Tennessee, Girl Reserves '39; Glee Club '41; Variety Show '41; Minstrel '41; French Play '40; Hiking Club '41.

R. C. PATTY

Son of Mr. and Mrs. J. A. Patty, Mascot, Tennessee, Transfer from Mascot Junior High '38, Mascot: Safety Patrol '38; Monitor '38; 4-H Club '38; Central: 4-H Club '38, '39, '40, '41.

MARILYN MASHBURN

Daughter of Mr. and Mrs. Lee Mashburn, 511 Third Avenue, Fountain City, Tenn. Girl Reserves '38, '39, '40, '41; President of Girl Reserves '39, '40; Delegate to Girl Reserve Camp '39; Junior Honor Society '39, '40; May Day '38, '39, '40; Commercial Club '39, '40, '41; Chemistry Club '39, '40; Minstrel '39; Variety Show '39; Glee Club '38, '39; Centralite Staff '40, '41; Office Monitor '40, '41.

WILLARD PERCIVAL

Son of Mr. and Mrs. F. G. Percival, Garden Avenue Fountain City, Tennessee.

MARGARET MILLS

Daughter of Mr. and Mrs. C. E. Mills, Knoxville, Tennessee, Route 1, Christenberry Junior High — Girl Reserves '37; Knoxville High — Sketch Club '38; Girls Hi h (Atlanta Georgia) — Glee Club '39; Russell High (East Point, Georgia) Spanish Club '40.

JUANITA MILLER

Daughter of Mrs. J. F. Miller, 301 West Fifth Avenue, Fountain City, Tennessee.

HAZEL MINTON

Daughter of Mr. and Mrs. E. H. Minton, Route 1, Knoxville, Tennessee, Variety Show '38; Dramatics Club '38; Monitor '40; Senior Girl Reserves '40, '41; Home Ec Club '40, '41; Chemistry Club '40, '41.

ARTHUR ROACH

Son of Mrs. W. A. Roach, 617 Maynard Avenue, Knoxville, Tennessee, Football '38, '39.

ELIZABETH NICKLE

Daughter of Mr. and Mrs. L. B. Nickle, Route 7, Knoxville, Tennessee, Girl Reserves '39, '40, '41; Library Club '39, '40; Dramatics Club '41; Debating Club '41; Commercial Club '41; May Day '38, '39, '41; Vice-President Girl Reserves '41; Program Chairman Girl Reserves '39.

J. FRANK RUSSELL

Son of Mrs. Ellen Russell, 400 Fourth Ave., Fountain City, Tennessee, Safety Patrol.

HELEN OWENS

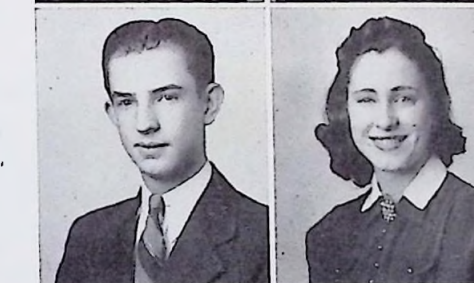
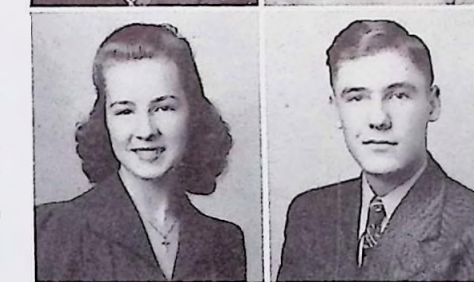
Daughter of Mr. and Mrs. H. A. Owens, Route 5, Knoxville, Tennessee, Monitor '41.

HARLEE SHERROD

Son of Mr. and Mrs. W. A. Sherrod, A Street, Fountain City, Tennessee, Dramatic Play '39; Moving Picture Operator '39, '40; Chemistry Club '39, '40; Monitor '39, '40; Senior Honor Society '40, '41.

BESSIE PARRIS

Daughter of Mr. and Mrs. Edward Parris, Route 12, Fountain City, Tennessee, At MacMain High, New Orleans, Louisiana—Archery Club '37, '38; Glee Club '37, '38; Freshman Party '37; At Central Commercial Club '39, '40.



RUBY MONDAY

Daughter of Mr. and Mrs. J. W. Monday, Grove Avenue, Fountain City, Tennessee, Home Ec Club '37; Senior Girl Reserves '41; French Tournament '41.

LUE VERA MOORE

Daughter of Mr. and Mrs. E. W. Moore, 33 Oak View Drive, Fountain City, Tenn. Glee Club '39, '40; May '39, '40, '41; Minstrel '39, '40; Second Place winner in High School Day Sop. Voice '39; Senior Honor Society '41; Soloist in Band Concert '41.

WILFRED RITTAMEL

Son of Mr. and Mrs. W. W. Rittamel, Gibbs Road, Fountain City, Tenn. Junior Honor Society '37, '38, '39, '40; Chemistry Club '40, '41; Senior Honor Society '41.

MARION JEAN NIGHBERT

Daughter of Mr. and Mrs. E. L. Nighbert, Constantine Road, Powell Station, Tenn. At Powell High School — Home Ec Club '37, '38, '39; Library Club '38, '39; President Sophomore Class '38, '39; Soft Ball Club '38; Amateur Show '39; Monitor '38, '39; May Day '39; At Central High — Senior Honor Society '41; Monitor '40, '41.

JERAL SHAWN

Son of Mr. and Mrs. Lee Shawn, 905 Fair Avenue, Fountain City, Tennessee, Highest Grades in Freshman Class '38; Highest Grade in Sophomore Algebra '39; Junior Honor Society '38, '39, '40; Treasurer of Junior Honor Society '39, '40; Latin Tournament '38, '39, '40, '41; Monitor '40, '41; Chemistry Club '40, '41; Vice President of Chemistry Club '40, '41; Vice President of Senior Honor Society '40; President of Senior Honor Society '41; Senior Honor Society '39, '40, '41; Assistant Editor of Centralite '40; Junior Band '38, '39.

DORIS PALMER

Daughter of Mr. and Mrs. J. R. Palmer, Inskip, Tennessee, Variety Show '39, '40; Glee Club '39, '40; French Program '40; Johnson City Contest '40; U. T. Contest '40; May Day '37, '38, '39; Girl Reserves '40, '41; Home Ec Club '40, '41; Glee Club '40, '41; Minstrel '41; Monitor '40, '41; Concert '41.

SUSAN FRANCES PEACHER

Daughter of Mr. and Mrs. R. L. Peacher, 249 Gibbs Road, Transferred from Tarbox Junior High, Nashville '38 Girl Reserves '37, '38, '39, '40, '41; Junior Honor Society '38, '39; Commercial Club '40, '41; Home Ec Club '38, '39, '40, '41; French Tournament '41.

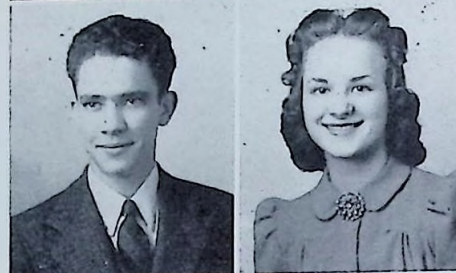
MARGARET E. PINKSTON

Daughter of Mr. and Mrs. J. F. Pinkston, Mascot, Tennessee, Transferred from Mascot Junior High. At Central: Junior Honor Society '38, '39; Commercial Club '39, '40, '41; Senior Honor Society '39, '40, '41; Monitor '40, '41; Typing Medal '40; Centralite Staff '40, '41; May Day Attendant '41.



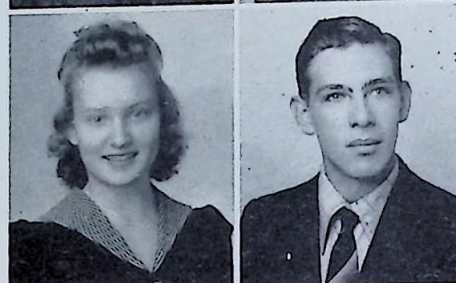
DAN SHERROD

Son of Mr. and Mrs. H. A. Sherrod, Route 8, Knoxville, Tennessee, Band '38, '39, '40, '41.



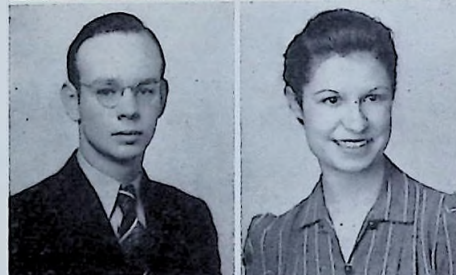
MILDRED PROFFITT

Daughter of Mrs. Mae Reasor, 832 Atlantic Avenue, Knoxville, Tennessee, May Day '38, '39, '40, '41; Girl Reserve '39, '40, '41; Secretary of Girl Reserves '41; Junior Honor Society '39; Dramatic Club '39; Home Ec Club '40, '41; Centralite '41.



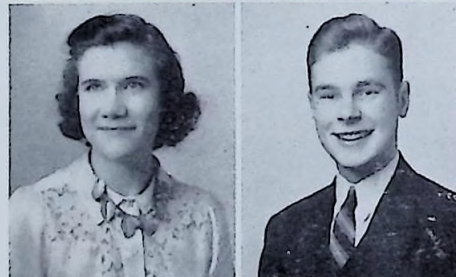
WILBUR JOE SIMMS

Son of Mr. and Mrs. A. J. Sims, Fountain City, Tennessee, Band '38, '39, '40; C.H.S. Hiking Club '39, '40, '41; President Hiking Club '40, '41.



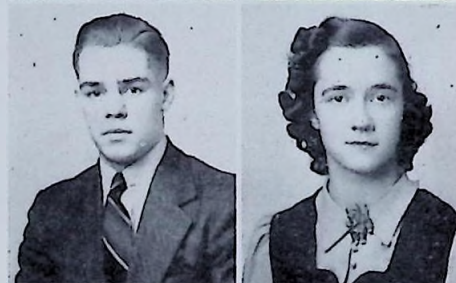
MARY CLAIRE PYLE

Daughter of Mrs. Mabel S. Pyle, 112 West Fifth Avenue, Fountain City, Tennessee, Home Ec Club '38, '39; Commercial Club '40, '41; Monitor '40, '41.



HARRISON L. SNYDER

Son of Mr. and Mrs. H. C. Snyder, Washington Pike, Knoxville, Tennessee, Band '36, '37; C. B. C. Club '37, '40; "C" Club '40; Football '39, '40.



WANDA F. RATCLIFF

Daughter of Mr. and Mrs. C. E. Ratcliff, 225 Hillcrest Avenue, Fountain City, Tenn. Home Ec Club '37, '38; French Program '39; Girl Reserves '41; Girl Reserve Secretary '41; May Day '41.



CLEO L. PRATT

Daughter of Mrs. Martha Pratt, 346 Tazewell Pike, Fountain City, Tennessee, Girl Reserves '40, '41; Monitor '40, '41.

THELMA PRATT

Daughter of Mr. and Mrs. C. L. Pratt, Tazewell Pike, Fountain City, Tennessee, May Day '37; Monitor '39, '40.

ELMER SLAUGHTER Jr.

Son of Mrs. Margaret Slaughter, Route 6, Knoxville, Tennessee, Senior Honor Society '41.

GLADYS RUTH PUGH

Daughter of Mr. and Mrs. George W. Pugh, Sansarc, South Dakota, Transferred from Fort Pierre High School, South Dakota. Glee Club '37, '38, '39; Basketball team '37, '38, '39; Central: Girl Reserves '39, '40; French Pageant '40; Senior Honor Society '41.

PEYTON McGUIRE SMITH, Jr.

Son of Mr. and Mrs. Peyton McGuire, 218 Cherokee Ave., Fountain City, Tennessee, Junior Honor Society '38, '39; President of Junior Honor Society '38, '39; Senior Honor Society '40, '41; Chemistry Club '39, '40; President of Chemistry Club '39, '40; Football '38, '39; Tenn. Boy's State representative '40; Vice-President Sophomore Class '38, '39; President of Junior Class '39, '40.

WANDA L. RASAR

Daughter of Mrs. Rosa Rasar, 3217 Linden Avenue, Knoxville, Tennessee, Home Ec Club '38, '39, '40; Dramatic Club '40, '41; Girl Reserves '39, '40, '41; Debating Club '41; Variety Show '41; Show Boat Minstrel '41.

MINNIE REYNOLDS

Daughter of Mr. and Mrs. A. L. Reynolds, 990 N. Broadway, Knoxville, Tennessee, Girl Reserves '38, '39, '40, '41; Vice-President of Girl Reserves '41; French Pageant '39; May Day '40.

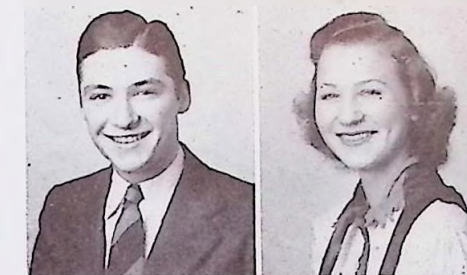
LEONA JOYCE ROBERTS

Daughter of Rev. and Mrs. W. L. Roberts, Knoxville, Tennessee, Route 7, May Day '38; Girl Reserves '39, '41; Home Ec Club '39, '41; Minstrel '41; Monitor '41; Glee Club '39, '40, '41; Varsity Show '40.



BURL STEELE

Son of Mr. and Mrs. E. O. Steele, 614 Third Avenue, Fountain City, Tennessee, Safety Patrol '39, '40, '41; Major Bowes Program '37; Minstrel '37, '38, '39; Senior Play '39.



HAZEL AGNES RIGSBEE

Daughter of Mr. and Mrs. L. C. Rigbee, 122 Hillcrest Avenue, Fountain City, Tenn. Home Ec Club '38; Girl Reserves '39; Glee Club '41.



HOWARD STORMER

Son of Mr. and Mrs. C. E. Stormer, Route 12, Fountain City, Tennessee



RUTH ROGERS

Daughter of Mr. and Mrs. Nafford Rogers, Route 7, Knoxville, Tennessee.



WILL SAMUEL TEMPLE

Son of Mr. and Mrs. W. S. Temple, Villa Road, Fountain City, Tennessee Transferred from East Nashville High, Sketch Club '39, '40, '41.



EVELYN SANSOM

Daughter of Mr. and Mrs. J. J. Sanson, Fountain City, Tennessee, Route 2, Home Ec Club '38, '39; Girl Reserves '39, '41; Commercial Club '39, '40; May Day '40; Monitor '40, '41.

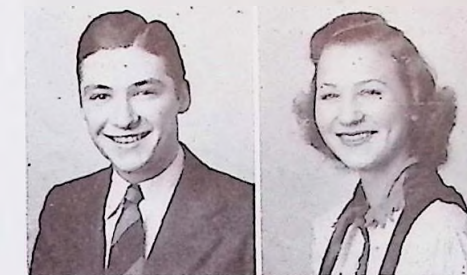


FLOYD SNODERLY

Son of Mr. and Mrs. R. B. Snodderly, Dutch Valley Road, Fountain City, Tennessee, Freshman Carnival '38; May Day '39; Glee Club '40; Variety Show '40; Glee Club Concert '40; C. H. S. Sketch Club '41; Minstrel '40, '41.

VIVIAN E. RIDGEL

Daughter of Mr. and Mrs. L. R. Ridgel, 3914 N. Broadway, Fountain City, Tenn. May Day '38, '39.



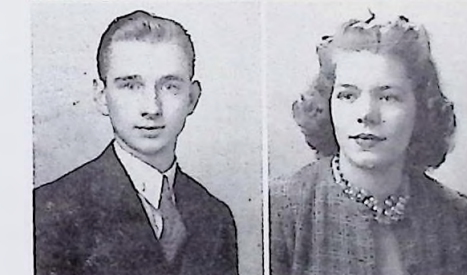
ZENNA STENNETTE

Son of Mr. and Mrs. J. T. Stennette, Route 6, Knoxville, Tennessee, Transferred from Christenberry Junior High '38; Glee Club '40, '41; Minstrel '41.



ALICE RUTH ROBINSON

Mr. and Mrs. Stephen Humphrey, 2612 Wilson Avenue, Knoxville, Transferred from Virginia Intermont College, Bristol Va., Dramatics Club '37, '38; Tennessee Club '38, Southern Club '38, Girl Reserves '38, '39, '40, '41; Home Ec Club '39, '40; Centralite Staff '40, '41.



LESLIE STRANGE

Son of Mr. and Mrs. W. L. Strange, Concord, Tennessee.



JEAN E. RUGG

Daughter of Mr. and Mrs. P. J. Rugg, 102 Rose Avenue, Fountain City, Tenn. Home Ec Club '37, '38, '39; Girl Reserves '37, '38, '39, '40; Glee Club '38; Sketch Club '40, '41; May Day '38; French Pageant '40.



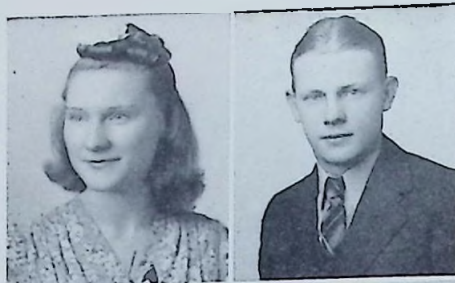
CAROLYN SCOTT

Daughter of Mr. and Mrs. S. M. Scott, Route 7, Knoxville, Tennessee, First year: Park Junior High School, Second and Third year: Powell High School, Fourth Year: Central High School; Glee Club '40, '41; Member of Minstrel cast '40, '41.



BETTY JEANNE SENTER

Daughter of Mr. and Mrs. David W. Senter, 409 Third Avenue, Fountain City, Tennessee, Home Ec Club '37, '38, '39, '40; Chemistry Club '39, '40; Girl Reserves '38, '39, '40, '41; Glee Club '38, '39, '40, '41; High School Day '39, '40, May Day '38, '39; Minstrel '38, '39, '40; Variety Show '39, '40; Glee Club Concert '38, '39, '40; Staff '40, '41.



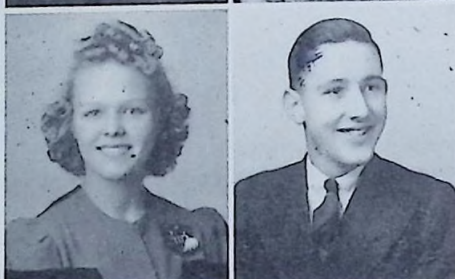
FRED RAY TILLETTE

Son of Mrs. Bonnie Tilletta, Route 1, Knoxville, Tennessee, Variety Show '37, '38, '39; Minstrel '37, '38, '39, '40; Centralite Staff '39, '40; Football '40, '41; Basketball '39, '40; 4-H Club '37, '38, '39, '40; Glee Club '38, '39, '40; E. T. E. A. '39, '40; Tennis Tournament '36, '37; Glee Club and Orchestra Concert '39, '40, '41; Orchestra '37, '38; Chemistry Club '39, '40; Typing Club '38, '39; Major Bowes '39, '40; May Day '38, '39, '40, '41.



ELIZABETH SHIPMAN

Daughter of Mr. and Mrs. O. K. Shipman, Route 1, Knoxville, Tennessee, Powell High School; Guidance Club '38, '39; Glee Club '37, '38; Monitor '38, '39; Central High School; Hiking Club '40, '41; Girl Reserves '40, '41.



JACK TURNER

Son of Mr. and Mrs. J. C. Turner, Route 5, Lee Highway, Knoxville, Tennessee.



PHYLLIS MARIEL SLAUGHTER

Bridge Pike, Knoxville, Tennessee, First Prize Daughter of Mr. and Mrs. Slaughter, Boyas in Nation Book Week Contest '37; Dramatics Club '38, '39; Girl Reserves '38, '39, '40, '41; Home Ec Club '38, '39, '40, '41; Variety Show '38; Glee Club Concert '38; High School Day '39; May Day '39; Representative of Art Classes at E. T. E. A. '40; Guest Artist of County Art Teachers '40; Hiking Club '40, '41; Centralite Staff '40, '41; President of Sketch Club '40, '41; Senior Honor Society '41.



BILLY WALLACE

Son of Mr. and Mrs. Rex Wallace, Route 13, Fountain City, Tennessee, At Christenberry Junior High: Band '37; Orchestra '37; Senior Class Play '37; Glee Club '37; Beacon Staff '37; At Central: Dramatic Club '40, '41; Band '38, '39, '40, '41; Minstrel '41; Variety Show '40; Debating Club '41; Centralite Staff '40, '41.



BOBBIE JEAN STERLING

Daughter of Mr. and Mrs. R. A. Sterling, 719 Cedar Lane, Fountain City, Tennessee, Home Ec Club '38, '39, '40, '41; Girl Reserves '39, '40, '41; Home Ec Camp '38, '39; French Play '40; May Day '40; Glee Club '39, '40; Glee Club Contest at Johnson City '40; Carnival '41; Minstrel '40; High School Day '40.



NOLAN THOMAS

Son of Mr. and Mrs. M. M. Thomas, Hillcrest Ave., Fountain City, Tennessee, Hi-Y '38, '39, '40; Football '37, '38, '39, '40; "C" Club '37, '38, '39, '40, '41.

DOROTHY SHEARL

Daughter of Mr. and Mrs. W. A. Shearl, Route 7, Knoxville, Tennessee, Junior Honor Society '38, '39, Senior Honor Society '40, '41.

JOHN W. TINDALL

Son of Mrs. Henrietta Tindall, 220 E. Sixth Ave., Fountain City, Tennessee, Hi-Y '40, '41; Football Manager '39, '40; Basketball Manager '39, '40.

KATHERINE SITTON

Daughter of Mr. and Mrs. John W. Sitton, Route 6, Knoxville, Tennessee, Home Ec Club '37, '38; May Day '38, '39, Junior Honor Society '38, '39; Senior Honor Society '40, '41; Treasurer Senior Honor Society '41; Variety Show '39; Hiking Club '39, '40, '41; Secretary Hiking Club '40, '41; Girl Reserves '38, '39; Dramatic Club '38, '39; Monitor '39, '40; Office Monitor '40, '41; Play Contest '39, Latin Tournament '38, '39, '40.

LEWIS M. WADE Jr.

Son of Mr. and Mrs. L. M. Wade, Sr. 2928 Fountain Park Boulevard, Knoxville, Tenn. Glee Club '38, '39, '40; Representative to East Tennessee Chorus at U. T. '39; Centralite Staff '39, '40, '41; Advertising Manager '41.

CHARLYNE F. SMITH

Daughter of Mr. and Mrs. C. R. Smith, Kesterwood Drive, Fountain City, Tennessee, Transferred from Farragut '37; Home Ec Club '37; At Central: May Day '38, '40; Home Ec Club '37, '38, '39, '40, '41; Junior Honor Society '39, '40; Delegate to Nashville '40; Big Revue '39; French Pageant '39; Home Ec Camp '39, '40; Girl Reserves '39, '40, '41; Sketch Club '40, '41.

VIOLET O. STILLMAN

Daughter of Mr. and Mrs. G. T. Stillman, 609 Fourth Avenue, Fountain City, Tenn. May Day '38; Junior Honor Society '38, '39, '40; Senior Honor Society '41; Girl Reserves '38, '39; Hiking Club '40, '41; Secretary of Commercial Club '40, '41.

BARBARA SWITZER

Daughter of Mrs. J. A. Switzer, Bearden, Tennessee, Girl Reserve Club '38, '39, '40, '41; Monitor '39, '40; May Day '38, '41; Hiking Club '40, '41; Chemistry Club, Secretary '41.

VICTOR LLOYD WATSON

Son of Mr. and Mrs. H. Victor Watson, 203 Jackson Avenue, Fountain City, Tenn. At K. H. S. — Radio Operator '38; At C.H.S. — Minstrel '39, '40, '41; Stage Manager '40, '41; Movie Operator '40; Chief Operator '41; Dramatics Club '39; Hi-Y Club '41; Safety Patrol '38, '39; Band '40, '41.

CATHERINE TINDALL

Daughter of Mrs. Henrietta Tindall, 220 East Sixth Avenue, Fountain City, Tenn. Home Ec Club '37, '38; Girl Reserve '38, '39, '40, '41; Minstrel '39; Commercial Club '40, '41; Centralite Staff '40, '41; Glee Club '38, '39; May Day '39.

ELTON WEBB

Son of Mr. and Mrs. G. E. Webb, Bearden, Tennessee, Sports Editor, '40, '41.

ELIZABETH LEONIE TRUAN

Daughter of Mr. and Mrs. Joseph D. Truan, Jackboro Pike, Fountain City, Tennessee, Gladys Wallace Cup for Highest Freshman Algebra '38; Thomas Ford Cup for Highest grade in Sophomore Algebra '39; Home Ec Clubz '37, '38; Junior Honor Society '38, '39; Latin Tournament '38, '39, '40; Award for highest average in sophomore class '39; P.T.A. cup for English '39; Monitor '39; Award for second highest in Junior Class '40; French Tournament '41; Senior Honor Society '40, '41.

LEVI WHITE

Son of Mr. and Mrs. R. H. White, 2022 Washington Pike, Football '38, '39, '40, "C" Club '38, '39, '40.

INEZ UNDERWOOD

Daughter of Mr. and Mrs. J. R. Underwood, 210 Doughty Road, Fountain City, Tennessee, May Day '38; Monitor '40, '41.

JAMES WARWICK

Son of Mr. and Mrs. J. W. Warkick, 306 Tozwell Pike, Fountain City, Tennessee, Band '37, '38, '39, '40; Hi-Y '40, '41; Variety Show '39.

HELEN CATHERINE TILLERY

Daughter of Mr. and Mrs. P. E. Tillery, 907 Chicamauga Avenue, Knoxville, Tenn., At Christenberry — Monitor '37, '38; Civics Club '37, '38; Home Ec Play '37, '38, At Central — Home Ec Club '39, '40, '41.

TOM WAYLAND

Son of Mr. and Mrs. W. G. Wayland, 1407 N. Broadway Knoxville, Tennessee.

GLYNDEN RUTH TOWLE

Daughter of Mr. and Mrs. W. L. Towle, Route 14 Knoxville, Tennessee, May Day '38, '39; Girl Reserves '38, '39, '40, '41; Glee Club '38, '39; Program Chairman of Girl Reserves '40, '41; Monitor '40, '41; Latin Tournament '38.

CARL WEBSTER

Son of Mr. J. S. Webster, Corryton, Tenn. Patrol '38, '39, '40, '41; Movie Operator '40, '41.

MILDRED HELEN TURNER

Daughter of Mr. and Mrs. C. E. Turner, 634 W. Woodrow Avenue, Fountain City, Tennessee, Orchestra '38, '39; Home Ec Club '38, '40; Orchestra Concert '39; Girl Reserves '40, '41.

NAOMI RUTH VILES

Daughter of Mr. and Mrs. H. H. Viles, 729 Maple Avenue, Fountain City, Tennessee, At Rule High — Vice-President Girl Reserves '37, '38; Health Queen '37; Amateur Hour '38; May Day Festival '37; Dramatics Club '37, '38; Glee Club '37, '38; At Central — Girl Reserves '38, '39, '40, '41; Home Ec Club '38, '39, '40; President Home Ec Club '41; Variety Show '39, '40; C. H. S. Chorus '38, '39, '40, '41; Secretary of Chorus '39, '40; Representative to East Tennessee Chorus '39; Minstrel '41; Freshman Midway '40; High School Day '39, '40, '41; Latin Tournament '39; Glee Club meet at Johnson City '39, '40; May Day '41.

EVELYN JEANETTE WALDROP

Daughter of Mr. and Mrs. H. N. Waldrop, North Ault Street, Knoxville, Tennessee, May Day '40.

JAMES PENLAND WORDEN

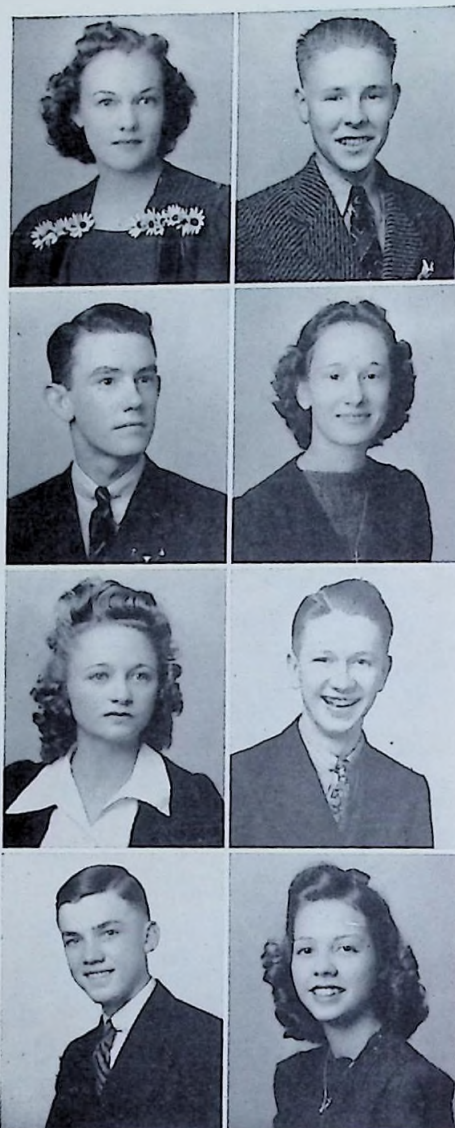
Son of Mr. and Mrs. P. W. Worden, 121 Junior Honor Society '39, May Day '38 Junior Honor Society '38, '39; Vice-President Evergreen Lane, Fountain City, Tennessee, '39, '41; Patriotic Day '41; President Chemistry Club '40; Centralite Staff '39, '40, '40; Circulation Manager '41; Vice-President Junior Class '39, '40; Senior Honor Society '40, '41; President Senior Honor Society '40; Band '40, '41; French Tournament '41; Monitor '40, '41; Hi-Y Club '39, '40, '41; President Hi-Y Club '40, '41.

MARY WINEGAR

Daughter of Mr. and Mrs. F. B. Winegar, 406 A Street Fountain City, Tennessee, May Day '38; Junior Honor Society '39; Commercial Club '39, '40, '41; Senior Honor Society '41.

JIMMY YARDLEY

Son of Mr. and Mrs. C. S. Yardley, Mascot, Tennessee, Route 1, 4-H Club '40, '41; Safety Patrol '39, '40, '41; Commercial Club '40, '41.



GRANT WHITNEY Jr.

Son of Mr. and Mrs. F. Grant Whitney, 317 Tazewell Pike, Fountain City Tennessee, Hiking Club '41; Staff '41; Glee Club '41.

RUBY WALKER

Daughter of Mr. and Mrs. A. W. Walker, Carryton, Tennessee, Route 2.

LEWIS YODER

Son of Mr. and Mrs. L. L. Yoder, 821 Hiwassee Avenue, Knoxville, Tenn. Chemistry Club.

JULIE WRENNE

Niece of Mr. and Mrs. Joel L. Davis 300 8th Avenue, Knoxville, Tennessee, Transferred from East Nashville High '38; Nashville: Girl Reserves '37, '38; Latin Tournament '38. Central: Home Ec Club '38, '39; Girl Reserves '38, '39, '40, '41; Secretary of Girl Reserves '39, '40; Junior Honor Society '39, '40; Senior Honor Society '40, '41; Latin Tournament '39; French Tournament '41; Office Monitor '40, '41; May Day '39, '40, '41; 'Miss Columbia' '41; Dramatic Club '38, '39; Secretary and Treasurer Senior Class '40, '41.



CLASS DAY EXERCISES

FRIDAY EVENING, MAY 23, 1941

8:00 O'clock

School Auditorium

BACCALUREATE SERMON

SUNDAY EVENING, MAY 25, 1941

7:00 O'clock

Church Street Methodist Church
KNOXVILLE, TENNESSEE

by

REVEREND WILLIAM F. BLACKARD, D. D.
Pastor of Church Street Church

Special Music by the Church Choir

COMMENCEMENT EXERCISES

TUESDAY EVENING, MAY 27, 1941

8:00 O'clock

School Auditorium

Speeches by Class Representatives

MARY ELIZABETH BROWN

PEYTON SMITH

SONG by LU VERA MOORE

Address

MR. ROY. R. VANCE

High School Supervisor for the State of Tennessee
Nashville, Tennessee

Assisting: Two Young Ministers of Fountain City

REVEREND CLYDE BURKE

REVEREND C. F. WATKINS

Delivery of Diplomas

MR. HOP BAILEY

MUSIC by WALBURN-CLARK ORCHESTRA

Commencement Program

HOROSCOPE

NAME	NICKNAME	SAYING	PASTIME	WANTS TO BE	WILL BE
Walker Bailey	"Bud"	"Ada"	Ada	With Ada	Married to Ada
Ada Hampson	"Tiny"	"You do?"	Recordings	Pro Dancer	Chorus girl
Jack Norris	"Sor"	"Hello"	Wasting time	Lone Ranger	Green Hornet
Reba Inklebarger	"Inky"	"Beautiful"	Sewing	Success	Flop
O. B. Baskette	"Basket"	"I saw you"	Smooching	Drummer Boy	A good one
Faith Bean	"Faithy"	"Aw Shoot"	Hayrides	Nurse	Success
Lillard Luttrell	"Jr."	"Look-Girls"	Music	Great Conductor	One man band
Mildred Beal	"Mickey"	"Say"	Smooching	Loved	Same
David Cawse	"Dee"	"Weeeel"	Making Money	UT Football Star	A good one
Dorothy Foley	"Dot"	"Hey There"	Dating	Noticed	Without a doubt
Charles Caldwell	"Chan"	"I'm off women"	Football	Football Coach	Assistant Coach
Genevia Atchley	"Pres"	"Hello kid"	Driving	Gym Teacher	Wrestler
Grover Beeler	"Gib"	"That's alright"	Football	Football Star	Too small
Barbara Hope Haynes	"Hopey"	"Could be"	Writing	Journalist	Married
Jimmy Worden	"Jim"	"Let's see"	Making flippers	Doctor	Great Executive
Barbara Ailor	"Barby"	"Naturally"	Driving	Mrs. Francis	Mrs. Francis
Jim Cawse	"Bashful"	"Sho nuff?"	Crosword puzzles	Ditch Digger	WPA Worker
Barbara Switzer	"Barb"	"Gosh"	Dating	Dated	Old Maid
James Payne	"Jim"	"Julie"	Julie	With Julie	With Julie
Julie Wrenne	"Brown Eyes"	"Sugah"	Jim	Mrs. Payne	Mrs. Payne
John Tindall	"Johnny"	"Hi"	Coach Robinson	President	Successful
Jeanne MacWhirter	"Mac"	"Not now"	Marion Clark	Little	Bigger
John Cooper	"Johnny"	"Did you know?"	Chemistry	Important	President
Alma Cluck	"Clucky"	"G. R. today"	Clubs	President	Housewife
Edward Felknor	"Ed"	"You don't mean it"	Reading	Hotel Manager	Bellhop
Martha Cox	"Mop"	"Harold"	Harold	Married	Married
Ralph Butts	"Esquire"	"Got a cigarette?"	Drums	Gene Krupa	Ralph Butts
Catherine Tindall	"Cat"	"Yeah"	Skating	Sophisticated	Sweetest
Bill Clark	"Bill"	"Shucks"	Waterboy	Tall	A little taller
Elizabeth Truan	"Lizzie"	"I know"	Studying	Principal	Flunked
James Berkley	"Jim"	"That's life"	Working	Successful	Anything he wants
Dorothy Dyer	"Dot"	"Aw, shoot"	Teasing	Single	Married
Blake Brock	"Step-in-fetch-it"	"Hi, there"	Doing nothing	Just anything	Probably
Margaret Hunter	"Targ"	"Good Honk"	Parking	Popular	Married
Albert Murrian	"Shorty"	"Isn't that nice?"	Driving	Golf Pro	Caddy
Mildred Ruckel	"Mickey"	"Club meeting"	Worrying	Obedied	Disobeyed
Ray DePue	"Stinky"	"Where am I?"	Loafing	Bone specialist	Horse Doctor
Elizabeth Nickle	"Lib"	"Some Stuff"	Boys	Actress	Flop
James Cobble	"Ham"	"Ain't I pretty?"	Looking Pretty	Goodlooking"	Disappointed
Carolyn Scott	"Carrie"	"Hi there"	Falling in love	Married	Married
Edmund Clark	"Ed"	"Jiminy Cricket"	Basketball	Engineer	Contractor
Thelma Pratt	"The"	"Have you heard?"	Gossip	Dated	Stood up
Gordon Dean	"Yankee"	"Gosh"	Swimming	Champion swimmer	Skating teacher
Viola Galle	"Vi"	"See"	Singing	Prima Donna	Torch singer
James Henderson	"Jim"	"Gotta go"	Trying to date Babe	With Babe	When he can
Virginia Gibson	"Bill"	"Hey"	Talking	Nurse	A good one
Charles Evans	"Charlie"	"Alright"	Football	Billionaire	Hundredaire
Glynden Towle	"Glyn"	"Ain't it so"	Selling potato chips	Typist	Clerk
Paul Henson	"Hen"	"You're anotheron"	Smoking	Movie Actor	Usher

NAME	NICKNAME	SAYING	PASTIME	WANTS TO BE	WILL BE
Marion Clark	"Blondie"	"Did you know?"	Acting	Blonde	Peroxide
Bill Hill	"Hill Billy"	"Gimme a light"	Nothing	Different	The same
Leola Linkous	"Lala"	"Jene said pas"	French	Success	Flop
J. P. Lane	"Percy"	"That's right"	Skating	Loved	Adored
Martha Isbell	"Issa"	"Who me?"	Mary Lib Brown	With Mary Lib	With Mary Lib
Henry Lassing	"IVth"	"I know	Cracking deep jokes	Great orator	Debating teacher
Charlyne Smith	"Chenny"	"One never knows"	Boys	Very popular	Very disappointed
Howard Painter	"72"	"Hi Hon"	Girls	A Major Neyland	Assistant coach
Phyllis Slaughter	"Phyl"	"Will I?"	Poetry	Poet	Artist
Howard McCutcheon	"Cutchy"	"My gracious"	Tropical fish	Famous	unknown
Wanda Raser	"Wanda"	"I don't know"	Acting	In movies	Mrs. Teague
Jack Marshall	"Jackie"	"Gad"	Running around	Noticed	Quiet a character
Marilyn Mashburn	"Blondie"	"Ohhhh"	Typing	Private Ses'y.	Private Sec'y No. 1
Charles Moffett	"Charlie"	"Seen my gal?"	Acting	Actor	Stand in
Alice Ruth Robinson	"Robby"	"Gad"	Fibbing	Success	Anything she wants
Nolan Thomas	"Lonny"	"Hey"	Football	Bachelor	Married
Naomi Viles	"Sweety"	"You don't say?"	Singing	Opera Star	Stage hand
Lewis Wade	"Rosebud"	"Who. me?"	Dancing	Liked	Called "honky tonk"
Patti Sue Lewis	"Pat"	"Hey"	Making friends	Popular	Popular
Richard Noel	"Dick"	"Patti Sue"	Patti Sue	With Patti Sue	Alone
Margaret Coker	"Peggy"	"Well good"	Movies	Aviatrix	Too heavy
Frank Neubert	"Hairless Joe"	"Goooosh"	Football	Sailor	CCC Boy
Roxie Fansler	"Roxiette"	"My goodness"	Skating	Professional	Married
Ernest Ogg	"Ernie"	"Gimme girls"	4-H Club	Gentleman Farmer	Hired Hand
Willie Ruth Glover	"Willie"	"Good grief"	Singing	Singer	Old Maid
H. R. Proffitt	"Burr"	"O. K."	Football	Winner	Loser
Helen Harrell	"All American"	"Shoot"	Primping	Secretary	Boss' wife
Jeral Shawn	"Rev."	"Oh Yeah?"	Chemistry	Chemist	A good one
Elnora Butler	"Red"	"Do you really?"	Fussing	Doctor	Reformer
Victor Watson	"Vic"	"I'll have it done"	Mechanics	Movie producer	Talent scout
Mary Winegar	"Tiny"	"You know it"	Talking	Tall	Not over 5 ft.
Billy Wallace	"Good-looking"	"Isn't that nice?"	Driving	Lawyer	Needful of one
Edna Jinks	"Eddie"	"Hello there"	Being friendly	Well liked	Well liked
Fred Tillette	"Tilly"	"I'm willing"	Singing	Singer	No good at it
Susan Peacher	"Suzy"	"Morning paper"	Telling bum jokes	Nurse	Veterinarian
Levi White	"Blackie"	"Going my way"	Football	Lazy	No doubt
Dee Leuthke	"Dee"	"Hi Hon"	Flirting	Pretty	No different
Dan Sherrad	"Danny Boy"	"I don't know"	Working	Army pilot	Mechanic
Hazel Capps	"Hazie"	"Mercy"	Library Asst.	Librarian	A good one
R. E. Selby	"Selby"	"Hey there"	Football	Wrestler	Sorry
Lu Vera Moore	"Vera"	"What?"	Singing	A Grace Moore	A grand one
Bill Temple	"Red"	"Sure"	Reading	Success	Flop
Billie Clark	"Billie"	"Oh My"	Wanda	Like Wanda	Probably
Wilbur Sims	"Cutie"	"Is it?"	Movies	Forest Ranger	Soldier Boy
Margaret Pinkston	"Pinky"	"Say"	Shorthand	A-1 typist	A-4 typist
Grant Whitney	"Eli"	"Hey worm"	Photography	Photographer	Photographer
Anna Mae Kunkel	"Pat"	"S too bad"	Keeping busy	Old Maid	Same
Leslie Strange	"Less"	"Am I late?"	Being late	Billionaire	Too late
Katherine Sitton	"Kat"	"I think so"	Latin	Professor	Teacher
Elton Webb	"Buddy"	"Yeah"	Parking	"Loved	In a way
Elizabeth Shipman	"Lib"	"Alright"	Working	Genius	Almost
Peyton Smith	"Pasty"	"My goodness"	Wearing boots	Like Mr. Eubanks	Diplomat
Mary Elizabeth Brown	"Mary Lib"	"Who me?"	Studying	Technician	Fair



CLASS OFFICERS

JOE LAY.....President
 MAC LOVINGOOD.....Vice-President
 ROSEMARY JOHNSON.....Secretary
 ASA AMBRISTER.....Treasurer

JUNIOR CLASS



JUNIOR GIRLS

Lena Kate Ailar
Evelyn Akridge
Barbara Baldack
Jo Banker
Lucille Bayless
Jean Bellam
Edna Berney
Charlotte Terry
Eunice Black
Clave Brown
Louise Boring
Kathleen Brown
Mary Catherine Brown
Elizabeth Bryant
Mary Etta Burkhardt
Louise Burnett
Avery Capps
Evelyn Caul
Barbara Clark
Zenobia Cobb
Jane Cobble
Mary Elizabeth Cole
Betty Couch
Elizabeth Cunningham
Mary Loyd Cunningham
Agnes Currier
Jane Curtis
Pearl Dalton
Catherine Davis
Marie Duncan
Lena Elmore
Thelma Ewing
Betty Fair
Lois Fair
Iris Faulkner
Freda Fields

Ruth Ford
Margaret Fagarly
Nancy Gilmer
Ruth Frazier
Betty Grubb
Mildred Galloway
Mary Pearl Gaut
Barbara Gibbs
Hazel Gentry
Beria Grahl
Jeanette Hamilton
Geneva Hamilton
Dorothy Hargis
Hazel Lee Hays
Betty Hicks
Dorothy Hill
Charles Hobby
Patty Hoebner
Frances Holdredge
Cecil Hall
Mildred Hale
Bobby June Hollingsworth
Betty Huffaker
Margaret Humphrey
Ethel Hutchins
Ruby Hale
Eleanor Hall
Rebecca Irwin
Betty Lee Irwin
Zoe Jeffers
Jean Johnson
Rosemary Johnson
Mary Eleanor Jones
Alice Karnes
Mildred Keesling
Irene Kempton

Annie Kirby
Phyllis Large
Alice Lansden
Georgia Lee
Jean Lienart
Polly Ann Leinart
Frances Lovingood
Marie Lewis
Jane Love
Avanell McCart
Juanita McCloud
Mary Hannah McMurry
Frances Melts
Willie Mae Mathews
Frances Mathis
Wilma Miller
Pauline Minton
Margaret Maneyhum
Ateka Morris
Jessie Ruth Newman
Imogene Neubert
Marie Northern
Helen O'Dell
Virginia Osment
Martha Parker
Martha Lee Pearman
Virginia Petree
Lola Plunkett
Cora Poston
Betty Jo Powers
Lorraine Reclor
Wilma Reed
Gery Reynolds
Evelyn Rouse
Betty Ruckel
Mary Seal
Katherine Seay

Mary Margaret Sheets
Hettie Shipley
Margaret Shoun
Beulah Sinkhorn
Inez Smith
Katherine Snyder
Martha Nell Solomon
Charlotte Stoffell
Margaret Stuart
Billie Stansberry
Vella Suggs
Wanda Ruth Swaggerty
Mildred Suffridge
June Talley
Karen Taylor
Dorothy Thomas
Mary Anne Thornton
Mary Tindall
Mary Anne Tipton
Ruth Turner
Kathleen Van Story
Mary Lou Vitteloe
Bonnie Mae Ward
Charlotte Wardell
Sara Louise Watrous
Mary Lou Watson
Margaret Welch
Eileen Whedbee
Charlene White
Edna White
Mary Whittle
Marie Wilkerson
Emma Lee Winegar
Ruby Winstead
Ione Wisheart
Elizabeth Yadan
Ada Yadan



JUNIOR BOYS

Earl Acuff
Harace Adkins
Asa Ambrister
Rolland Anderson
H. O. Arnold
Douglas Bailey
Joe Beatty
Charles Benthein
Lloyd Best
Frank Berney
Judson Bingham
Gervin Balding
Billy Bozeman
Clarence Bracken
Lloyd Buffalow
Lafus Bunch
Bob Cable
Tom Cartwright
Charles Clark
Parvin Cox
Bill Daniel
Bill Davis
Gordon Davis
Charles Daughtery
Summner Dow
Kenneth Donahue
Jimmie Joe Edmondson
Bill Edwards
Ralph Elkins
Jimmy Elliott
Charles Edington
Harry Elliott

Buddy Evans
Walter Faulkner
Joe Fielden
John Fitch
W. L. Fuller
George Galandis
Freeland Gaddard
Harold Godfrey
David Grove
Fred Gheen
Allen Haynes
James Heatherly
David Highbaugh
Claude Habson
Carl Hubbs
Wilson Hutchinson
Barton Jones, Jr.
Harold Keene
Otis King
Joe Lay
Johnnie Llewellyn
Mack Lovingood
Kelly Lynch
Lynn McCloud
Elbert Maraverat
J. C. Massengill
Billy Mauk
Mark Major
James Medley
Fred Melts
Frank Miller

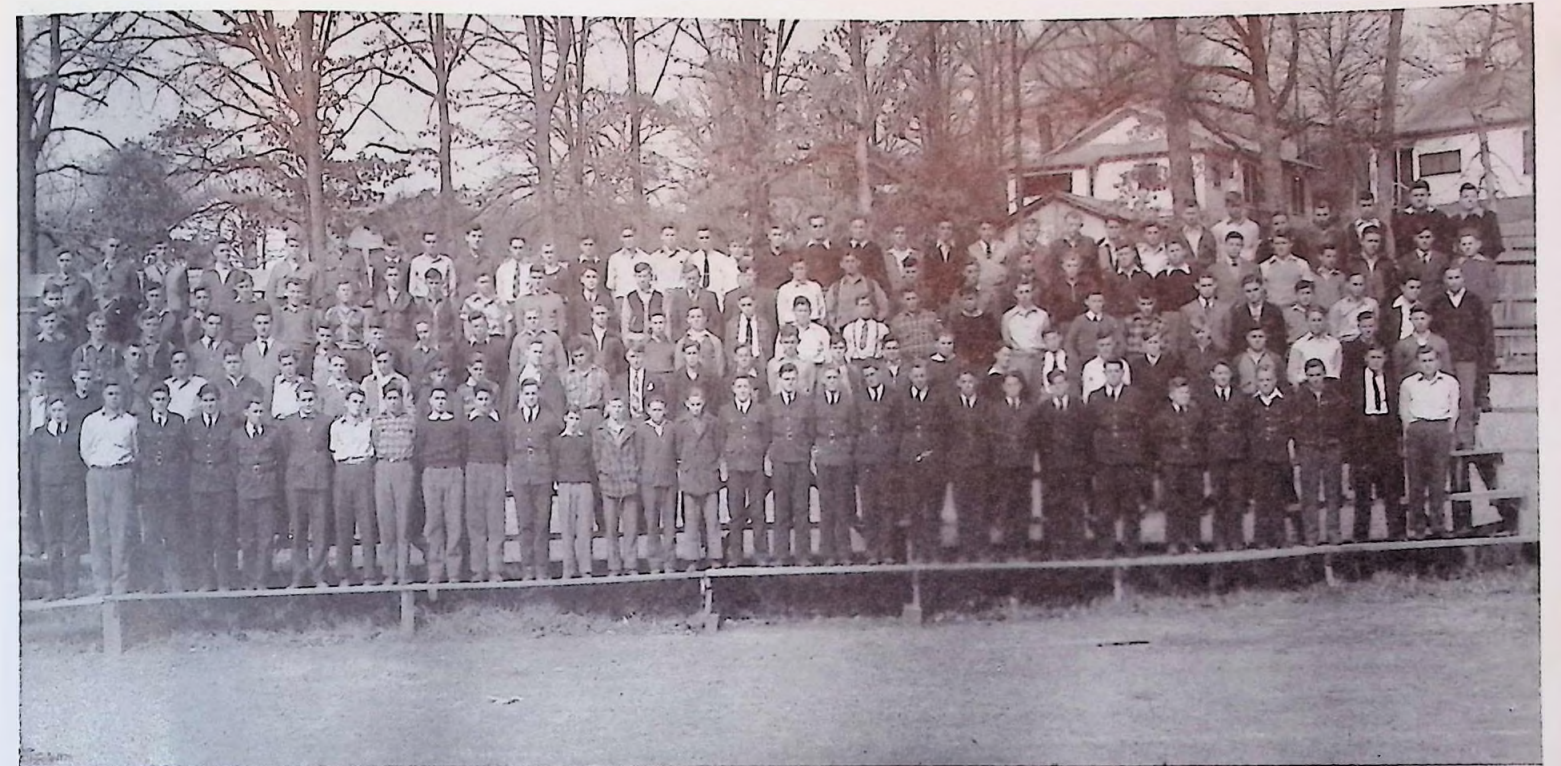
Dan Morgan
Joe Murray
Weston Murrian
Bud Mynatt
Carl Nelson
LeRoy Ogle
Wendal Ogg
Claude Payne
Bill Perry
J. L. Powell
Ralph Price
Bill Quigg
Bruce Reed
James Reynolds
James Russell
Ted Rutherford
Richard Sandberg
Bobbie Sandman
Billy Scanlan
Claude Schard
Fred Shanton
Jack Sheddian
Charles Simpson
Joe Smallman
Carl Smith
Edwin Smith
Everett Smith
James Allison Smith
Raymond Smith
Roscoe Smith
Moris Snow

Jack Spencer
Jimmy Strange
Ralph Stormer
Billy Story
Harley Taylor
Frederick Taylor
Boud Thomas
Lee Tucker
Gilbert Tipton
Bert Troutman
J. C. Turner
Donald Ven Haazier
E. H. Vineyard
Ralph Wise
Dennis Waldrop
John Wampler
John Warwick
Ray Watson
Roy Weddekind
Cletis Wells
Glen Wells
John Welmers
John Wilson
Glenn Wilson
John Winkle
Robert Winter
Kenneth Wood
Frank Wylie
Billy Yambert
William Zachary
James Zirkle



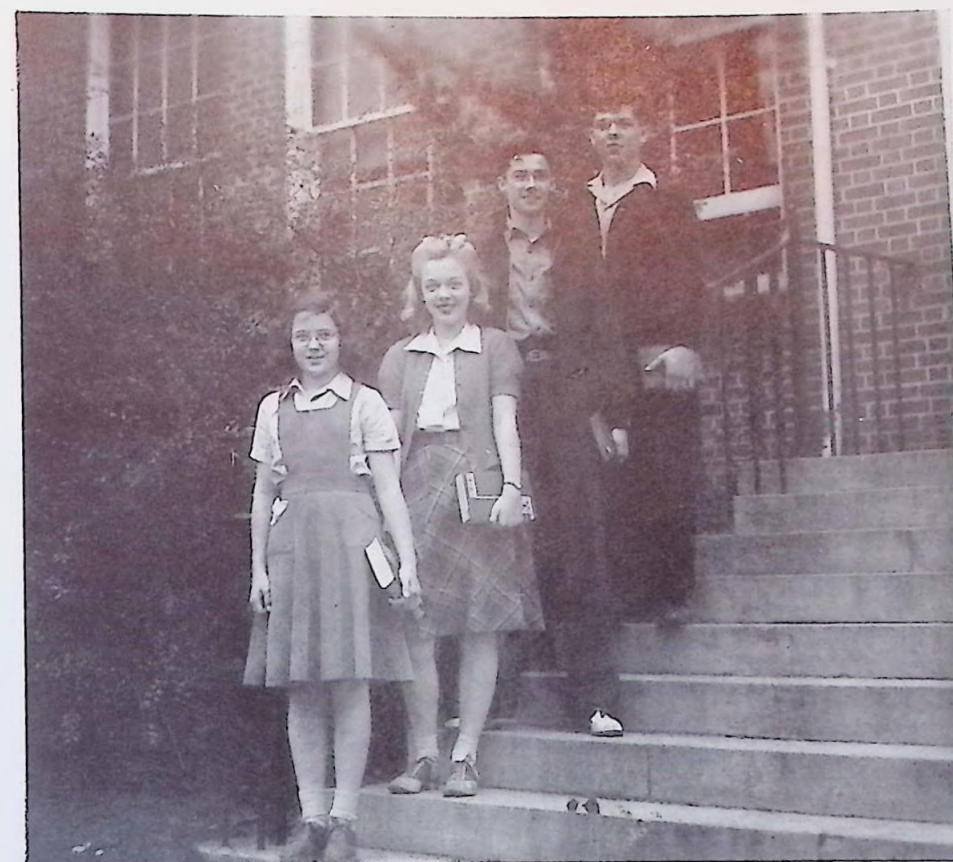
SOPHOMORE GIRLS

Ruth Allen	Maxine Drain	Edna Mae Little	Vanda Rogers
Dell Allen	Freddie Lou Easterly	Rae Lovingood	Harriet Anne Savage
Willdean Anderson	Lettie Easterday	Elizabeth Long	Mary Shearl
Mary Arthur	Faye England	Barbara Machamer	Ruby Shearl
Lois Arnwine	Mary Gilbert Epps	Catherine Mahan	Sarah Mack Shirley
Dorothy Anderson	Dorothy Evans	Jenny Malliby	Geneva Sherrod
Mary Bailey	Elizabeth Evans	Nellie Mae Maples	Mary Evelyn Sisk
Rowena Ball	Mary Kathryn Evans	Jean Marcus	Louise Smelser
Mary Elizabeth Bell	Helen Faulkner	Mary Margaret Martin	Claudia Smith
Nancy Bell	Martha Lou Felkner	Helen Masengill	Thelma Sowder
Wanda Eal	Mary Fine	Kathryn Massey	June Spear
Carlyn Blackwell	Anna Ruth Fraker	DeWilda Meyer	Ellen Steadman
Frances Bishop	Thelma Frazier	Mildred Miller	Josephine Sterling
Mildred Bowman	Cecil Gault	Lucy Mitchell	Betty Steward
Mary Jo Bolin	Juanita Gibbs	Mary Monday	Maxine Stipes
Ruth Brayles	Salie Gray	Louise Monday	Betty Tarver
Estha Bruhin	Ruth Haire	Ann Elizabeth Moore	Barbara Tibbs
Gladys Buchannon	Helen Hale	Carie Bell Morris	Frances Tindell
Mary Elizabeth Burkhardt	Ruby Hansard	Martha Jane Morris	Dorothy Tolson
Tressie Bunch	Sarah Ruth Hansard	Sarah Murphy	Martha Turner
Fay Burchette	Ethel Harbin	Lulla Mae Myers	Sue Ella Vaughn
Frances Butcher	Andeen Harbin	Fern Nicely	Jean Vise
Ruby Burgess	Anne Henson	Erma Lee Norris	Rosalie Wade
Lena Maude Bryan	Helen Hendrix	Martha Nowlin	Doris Walker
Loree Caldwell	Betty Highbaugh	Louise Ogle	Joan Warwick
Ruth Caldwell	Pauline Hightower	Dorothy Osmun	Louise Warwick
Maureen Chadwick	Betty Hillard	Mary Margaret Painter	Mildred Walston
Betty Chance	Anne Lois Hahner	Martha Palmer	Hazel Webster
Henrietta Childress	Gravette Hubbs	Mary Louise Paschal	Sarah Ruth Wedekind
Marilyn Cockrum	Maxie Hubbs	Jackie Perdue	Barbara Wells
Sammye Collins	June Jarnagin	Mildred Elizabeth Perry	Deane Williams
Pauline Corum	Nancy Johnson	Betty Pratt	Bernice Williams
Wilma Dale Crownover	Mary Elizabeth Jones	Sophia Pratt	Mary Douglas Williams
Betty Cruze	Mary Keener	Verna Proffitt	Mary Anne Williams
Ella Mae Dawson	Bobby Lynn Kelly	Juanita Pruett	Estelle Wilmoth
Janel Dean	Nancy King	Dorothy Price	Marie Whedbee
Gloria June Deaver	Joan Kitts	Margaret Ramsey	Mary Anne White
Loretta DeWine	Betty Lane	Jeanette Reed	Helen Wilhoite
Eloise Dover	Willie Mae Lane	Mary Ethel Rachat	Dorothy Wood
Alice Mae Dowling	Frances Large	Wilma Rogers	Geneva Wood
Lena Kate Dougherty	Hazel Lett	Betty June Rose	Betty Ruth Wylie
Lucille Dunkle	Beatrice Little	Hannah Jane Russell	Betty Kate Yardley



SOPHOMORE BOYS

Carlyle Alexander	Paul Cunningham	George Inklebarger	James Picquet
John Anderson	John Currier	Ned Irwin	Grady Renfro
Duane Armstrong	Jimmy Currick	Robert Lee Jarnagin	Bill Roberts
O. C. Arms	James England	Arthur Johnson	Luther Ricketts
Ralph Armstrong	L. H. Dalton	R. A. Jones	Fred Rule
John Atchley	Jack Davis	John Keaton	John Harold Sandberg
Milburn Atkins	Don Dyer	Errol Keith	S. E. Satterfield
Raymond Babely	Tom Dyer	Ruben Kempton	William Sharp
Lewis Baker	Alvin Elliott	Eugene King	David Shirley
Bill Barnhill	Paul Estes	Billy Kirby	Ralph Sheffer
Eugene Barry	Ross Everett	Columbus Knight	Ralph Simpson
George Barnes	Clyde East	Melvin Lady	Albert Smith
Oscar Bean	Allyn Fielden	Jack Lakin	Talbert Smith
Billy Bell	Herman Fisher	Ken Lawson	Fred Sherrod
David Black	Hubert Foster	Paul Lawson	J. C. Stinnett
Richard Bohannon	Billy Frost	Paul Learn	Kenneth Shipman
Ralph Bounds	Leonard Fulford	Don Lett	David Smith
A. J. Bowling	Bill Gallaher	Carl Loy	Robert Taylor
Edward Brandon	Bill Galyon	J. C. Lusby	George Thomas
Billy Broom	Boyd Galyon	Bill Lobetti	Bob Tillery
E. W. Brown	Albert Gaines	Bobby Luttrell	Tom Tindall
Kenneth Brayles	Eugene Grant	Charles Lowe	J. D. Underwood
Elmer Bryant	William Lake Greene	Stewart McCorkle	Ralph Underwood
Willard Bryan	H. H. Gresham	Rhea McFarland	W. M. Vandergriff
R. B. Burnett	Jack Haggard	Homer McGhee	Ralph Vise
W. D. Burnett	John Henry Hahn	James McMillan	Earl Walker
Bill Caldwell	Ralph Hall	Hugh Mays	E. E. Walker
J. T. Caldwell	Carl Hammond	Charles Mills	Ray Wallace
T. J. Cameron	Kelso Hamilton	Bill Mauls	Walter Walters
Mack Cameron	Mack Hansard	Lewis Mills	Jack Warwick
Gerow Carr	Ernest Harbin	Edward Minton	Howard Webster
Jack Carringer	Dennis Harrell	Gene Moore	Cecil Wells
Billy Carter	Herbert Harris	Bill Morris	Wallace Whitehouse
Leonard Carter	Gene Hegar	Carl Morris	Ed Williams
Ray Cate	Bobby Hethmon	Alvin Murphy	Lester Williams
Kenneth Chapman	Earl Hicks	Herbert Mynatt	Henry Wilson
Wallace Cluck	Boyd Hill	Bill O'Connor	M. M. Winkle
Leon Coppock	Hubert Hill	Garrett Parker	Charles Williams
Melvin Cowan	Paul Hodges	Nessie Parrish	John Woodby
I. G. Cowden	Clifford Hunley	Nathan Peoples	Charles Wilson
Bobby Cunningham	Paul Hutton	Galyon Wilson	Buddy Zoller



CLASS OFFICERS

BOB CAWRSE.....President
 WALTER TAYLOR.....Vice-President
 TOMMY ARMSTRONG.....Treasurer
 MARJORIE WALDROP.....Secretary

FRESHMAN CLASS



FRESHMAN GIRLS

Marian Akers
Geraldine Alexander
Betty Jane Armstrong
Tommye Armstrong
Florence Baker
Frances Barnes
Mildred Barnes
Imogene Basler
Gladys Bates
Ruth Belcher
Beatrice Berry
Edith Warren Blackard
Mary Lou Blankenship
Evelyn Booker
Sunny Mae Bandurant
Helen Boring
Rose Marie Brock
Bonnie Bryant
Virginia Bryant
Margaret Ann Burnett
Pauline Burgin
Margaret Butler
Mary Ruth Byerly
Catherine Caldwell
Betty Cameron
Virginia Cameron
Suzanne Carnes
Ruth Cassell
Katherine Chambers
Kathleen Clark
Jane Collett
Dorothy Conger
Nancy Cox
Rachel Cox
Pauline Cummings
Carolyn Cruze
Katherine Davis
Martha Anne Daniel
Margaret Davis
Cleo Dawson
Vesta DeMarcus
Geraldine DeVane
Marie Diamond

Doris Daw
Elsie Dyer
Jo Ella Easterday
Faye Ellis
Fredda Ewing
Doris Fielden
Margaret Fleming
Jane Gaines
Ann Galaher
Margaret Gilfin
Barbara Goddard
Kathleen Goodman
Mary Evelyn Grahl
Evelyn Grubb
Marion Grubb
Geraldine Hale
Dorothy Lee Haworth
Ruth Mitchell
June Henson
Jean Hickman
Collette Hill
Helen Hobson
Helen Hodgson
Mattie Lou Hadge
Mary Faye Holt
Mary Frances Housley
Mary Householder
Eloise Huff
Mary Anne Hunter
Joyce Irick
Helen Irwin
Hilda Johnson
Imogene Johnson
Juanita James
Ova Lee Jones
Virginia Mae Jones
Marjorie Jones
Jane Julian
Faye Keaton
Lucille Keaton
Marjorie Kimsey
Clarice King
Ruth Knott

Barbara Langston
Jane Legg
Marion Lewis
Alma Joyce Long
Delores Lunsford
Jane Lusk
Frances Maples
Marjorie Matthews
Betty McClain
Dorothy McGhee
Edith McGhee
Rena McGlothlin
Billie McKinney
Billie McMurray
Kathryn Rose Meyer
Betty Mills
Ruth Minton
Ruth Mitchell
Le Verne Monday
Evelyn Morgan
Margaret Morgan
Ann Morris
Mary Lee Maser
Jean Morris
Evelyn Musgrave
Kathleen Mynatt
Lillian Nelson
Kathleen Newman
Jean Nichols
Jean Norwood
Yvonne Parks
Barbara Payne
Mary Picquet
Helen Price
Mary Katherine Powell
Marie Pridemore
Emma Sue Ramsey
Helen Reece
Helen Richardson
Mary Frances Ricketts
Catherine Roark
Louise Rachel
Alice Rose

Paula Satterfield
Jean Sayres
Frances Schropshire
Joan Scruggs
Clara Sharp
Roberta Shepherd
Betty Shipe
Cetty Smith
Billy Ray Smith
Peggy Smith
Nellie Saloman
Amanda Stamps
Reva Stoffell
June Steele
Emma Strange
Charles'e Stalling
Barbara Stalling
LaVerne Tate
Marie Tipton
Faye Tipton
Nancy Toole
Helen Turner
Lillian Turner
Pauline Valentine
Ma'arie Wardrop
Ruth Walker
Anna Mae Walker
Georgene Warren
Frances Watkins
Ola Sue Watson
Beulah Sue White
Virginia Wilson
Lorraine Winstead
Dorothy Juanita Winstead
Eloise Winter
Estelle Wilmoth
Imogene Witt
Martha Jane Wood
Maxine Wood
Jennie Lou Wright
Grace Wrenne
Dorothy Wylie
Evelyn Yaakum



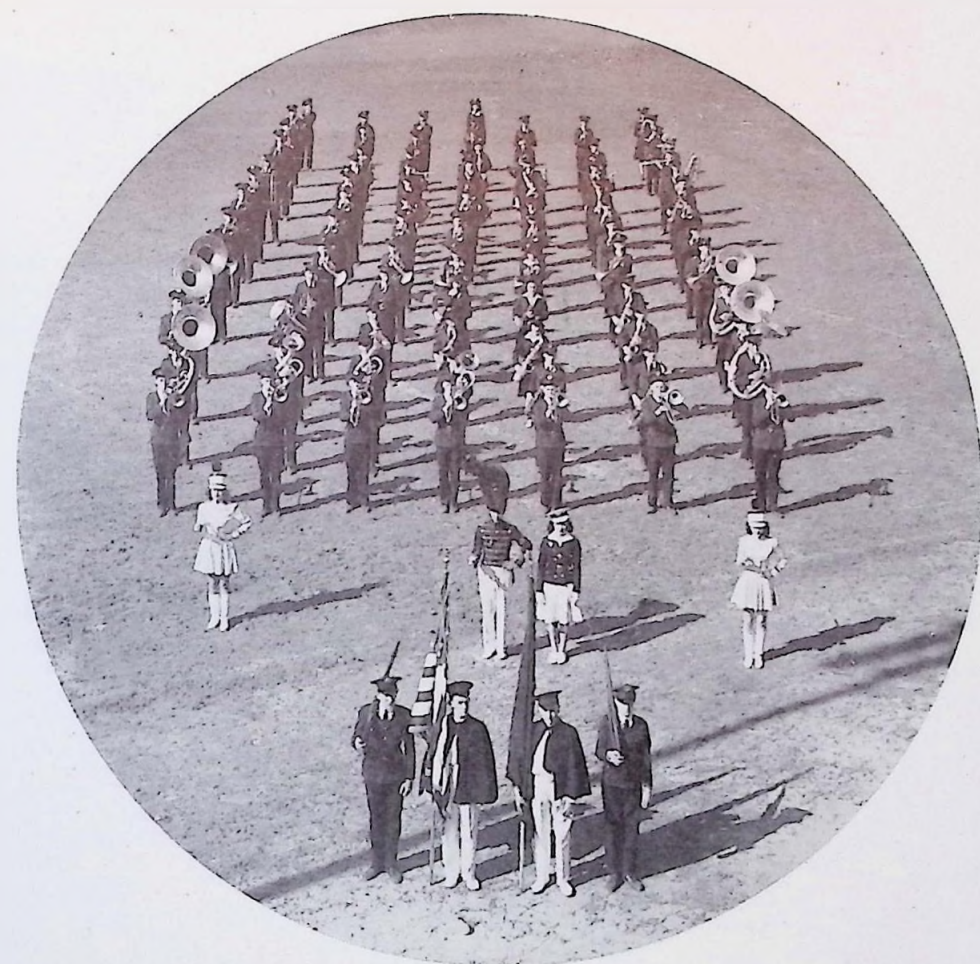
FRESHMAN BOYS

John Adair
A. L. Acker
John Alleman
Harvey Altom
Everett Armstrong
R. T. Atkins
James Allen
Wayne Bassett
Wayne Beavers
Robby Bevan
James Bean
Wayne Blair
Charles Blanc
Eugene Black
Bill Boring
Beryl Bounds
Paul Bridges
Harold Bounds
Laurence G. Brock
W. J. Brooks
Charles Brown
Robert Bruhin
Bobby Bryan
Elmer Bryant
Walter Butler
Charles Cain
Lucas Caldwell
Thomas Campbell
Boyd Capps
Earl Caul
Robert Cawse
J. C. Christian
Lawrence Chumley
James Clark
Glen Coleman
Albert Coram
G. C. Cox
Johnny Cox
Gene Crigger
Fain Davis
Johnnie Davis
Charles Day
Bob Deans
J. H. Doyle
Dewey Dyer
Clyde East

James Ferguson
Audley Frazier
Bill Gann
Charles George
Harold Gibson
Kenneth Gresham
Jim Grove
Charles Hammer
Bill Hamby
Thomas Hannahan
Leroy Hansard
James Harritt
William Haworth
Edward Herron
C. L. Hicks
Vaughn Hubbs
Harry Hubbs
Ralph Hunley
Elmer Hurst
Eugene Huskisson
Vernon Jackson
Curtis Jeffers
Theedao Jenkins
Charles Jennings
Charles Johnson
Joe Johnson
Lowell Johnson
Eric Kvaven
Eugene Kelley
J. R. Keller
Glenn Kennedy
L. C. Kinder
Leon King
Andy Kilts
Gene Kilts
Ralph Kron
Earl Kunkel
John Lakin
Ray Larrier
Wesley Lawson
Curtis Lay
Ted Lay
William Leslie
Ralph Lee
Al Lester
Hyman Lovelace

Victor Luster
Jimmy Lusk
Homer Linebaugh
Jack Luttrell
James McCulla
Paul McGlothlin
Joe McPherson
John McTeer
Joe McMillan
Harold Major
David Maples
Jack Marsh
John Mathis
James Matlock
Richard May
Donald Meredith
Ralph Merriman
Forrest Miller
Glenn Moore
Jimmy Moore
J. Allen Morgan
Ralph Mitchell
Noel Morrell
Hugh Mulkey
R. G. Mitchell
John Myers
Edward Monday
Jack Moore
Bill O'Dell
John O'Neal
George Olinger
Kendrick Owens
Kenneth Owens
Ted Owens
Ernest Payne
Bob Payne
Francis Payne
Lester Petree
John Pickens
John Piquot
John Pineda
Jimmie Popejoy
Earl Poore
James Potter
James Pruitt

Taylor Proffitt
Alvis Pyles
Lewis Rice
Harry Richardson
Carl Rogers
Charles Rudder
Earl Runyon
Marquis Scott
Junior Seay
Billy Searle
Alvin Smith
Chester Sharp
Jimmy Shipe
Rufus Smith
David Smith
Herbert Stedman
Jack Sterling
Darrell Stout
Jerry Smith
Fred Tarver
Walter Taylor
Tommy Thompson
Bob Tindall
Earl Tolson
Robert Tucker
Jimmy Tumblein
Eugene Tucker
Paul Wagner
Charles Waldrop
Campbell Wallace
Roy Walker
Ben Watrous
Leonard Webb
Ralph West
Dillard Whitson
Wilbur Whittle
John Woadly
Hugh Williams
Bobby Wood
Charles Wolfenbarger
Harold Wolfenbarger
Jack Worsham
Don Yarnell
Jack Yeazell
David Vise



ORGANIZATIONS



SENIOR HONOR SOCIETY . . . FIRST ROW: J. P. Lane, Charles Morris, Asa Ambrister, Ed Felkner, Jimmy Worden, Paul Hanson, Joe Lay, Jeral Shoun.
 SECOND ROW: Eunice Black, Gladys Pugh, Margie Ellis, Alma Cluck, Virginia Bolinger, Viola Galle, Marie Cook, Mildred Greer, Mary Winegar, Dorothy Shearl, Helen Harrell, Marion Holmes, Alice Karns, Margaret Pinkston.
 THIRD ROW: Betty Hughes, Mary Elizabeth Brown, Martha Isbell, Betty Fair, Martha Lee Pearman, Patty Hoebner, Violet Stillman, Julie Wrenne.
 FOURTH ROW: Willie Ruth Glover, Katherine Sittan, Reba Inklebarger, Kathleen Foust, June Talley, Barbara Clark, Margaret Keith.
 FIFTH ROW: Marion Nighbert, Phyllis Slaughter, Mary Alice Garvey, Elizabeth Truan, Martha Cox, Frances Holdredge, Mary Eleanor Jones, Miss Weigel.
 SIXTH ROW: Dennis Waldrop, Elenora Butler, John Cooper, Henry Lassing, Elmer Slaughter, Bill Yambert.
 SEVENTH ROW: Wilfred Rittamel, Harlee Sherrad, Jack Marshall, Howard McCutchan, Charles Evans, Robert McGhee, Peyton Smith.
 NOT PICTURED: Barbara Hope Haynes, Lu Vera Moore, Billy Daniels, Susan Jones, Lala Linkhaus.



SENIOR GIRL RESERVES . . . FIRST ROW: Mildred Beal, Dee Luethke, Dorothy Dyer, Helen Harrell, Juanita Clark, Elizabeth Shipman, Hazel Minton, Patti Sue Lewis, Glynden Towle, Faith Bean, Reba Inklebarger, Mildred Proffitt, Wanda Rosar, Barbara Switzer.
 SECOND ROW: Miss Garrison, advisor, Virginia Armstrong, Bobbie Jean Sterling, Marion Holmes, Treva Isan, Cleo Pratt, Viola Galle, Margaret Coker, Barbara Hope Haynes, Virginia Gibson, Joyce Roberts, Doris Palmer, Phyllis Slaughter, Frances Bell, Alma Cluck.
 THIRD ROW: Minnie Reynolds, Mary Ackridge, Willie Ruth Glover, Wanda Ratcliffe, Susan Jones, Mildred Turner, Aubra Lay, Virginia Bolinger, Evelyn Sanson, June Anderson, Marie Cook, Ruby Monday.
 FOURTH ROW: Blanche King, Naomi Viles, Charlyne Smith, Mickey Rucker, Ada Hampson, Julie Wrenne, Catherine Tindall, Alice Ruth Robinson, Betty Hughes, Jane Machamer, Marilyn Mashburn, Margaret Hunter, Billie Clark, Johnnie Mae Jett, Ellenora Butler.
 Page Fifty



JUNIOR HONOR SOCIETY . . . FIRST ROW: Marie Diamond, Barbara Straining, Harriette Ann Savage, Ann Henson, Nancy Johnson, Martha Felkner, Sarah Murphy, Mary Ann White, Mary Margaret Painter, Mary Ann Williams, Frances Barnes, Faye Keaton, Carolyn Cruze, Dorothy Wylie, Marie Tiplan, Sunny M. Bandurant.
 SECOND ROW: Marjorie Wardrop, Mary F. Housley, De Wilda Meyer, Faye England, Betty Highbaugh, Dorothy Osment, Martha Nowlin, Ellen Stedman, Carrie Belle Morris, Joan Warwick, Lois Arvine, Lenore Caldwell, June Jarnagan, Jane Collett, Helen Boring, Tammy Armstrong, Florence Baker.
 THIRD ROW: Claudia Smith, Stewart McCorkle, Evelyn Sisk, Betty Tarver, Mildred Bowman, Jeannette Dean, Katherine Davis, Jean Sayres, Nancy King, Barbara Gaddard, Doris Daw, Mary Ruth Byerly, Mary Frances Ricketts, June Spear, Pauline Valentine, Sally Gray, Miss Gibson, advisor.
 FOURTH ROW: Jean Hickman, Elizabeth Bell, Sue Ella Vaughn, Frances Large, Bobby Lynn Kelley, Anne Moore, Dorothy Lee Haworth, Georgene Warren, Jean Marcus, Roberta Shepherd, Nancy Cox, Nellie Solomon, Edith Blackard, Roberta Hart, Rufus Smith, Curtis Jeffers.
 FIFTH ROW: Alvin Murphy, David Shirley, George Barnes, Bobby Heathman, A. J. Bowling, David Block, Wallace Cluck, Hubert Hill, Grady Renfro, Luther Ricketts, Jack Lakin, Lester Petree, Paul Wagner, Jimmy Tumblin, John O'Neal.
 SIXTH ROW: Fred Sherrad, Bobby Bryan, Jim Grove, Billy Searle, Harvey Allam, Lewis Rice, Thomas Hanakan, Campbell Wallace, Arthur Johnson, Hubert Foster, Paul Cunningham, Wilbur Whittle, David Maples, Herbert Stedman, Glenn Kennedy.
 NOT PICTURED: Jack Hansard, Frances Tindell, Ralph Armstrong, Margaret Griffin, Ruth Belcher, Charles Cain, Charles Rudder.



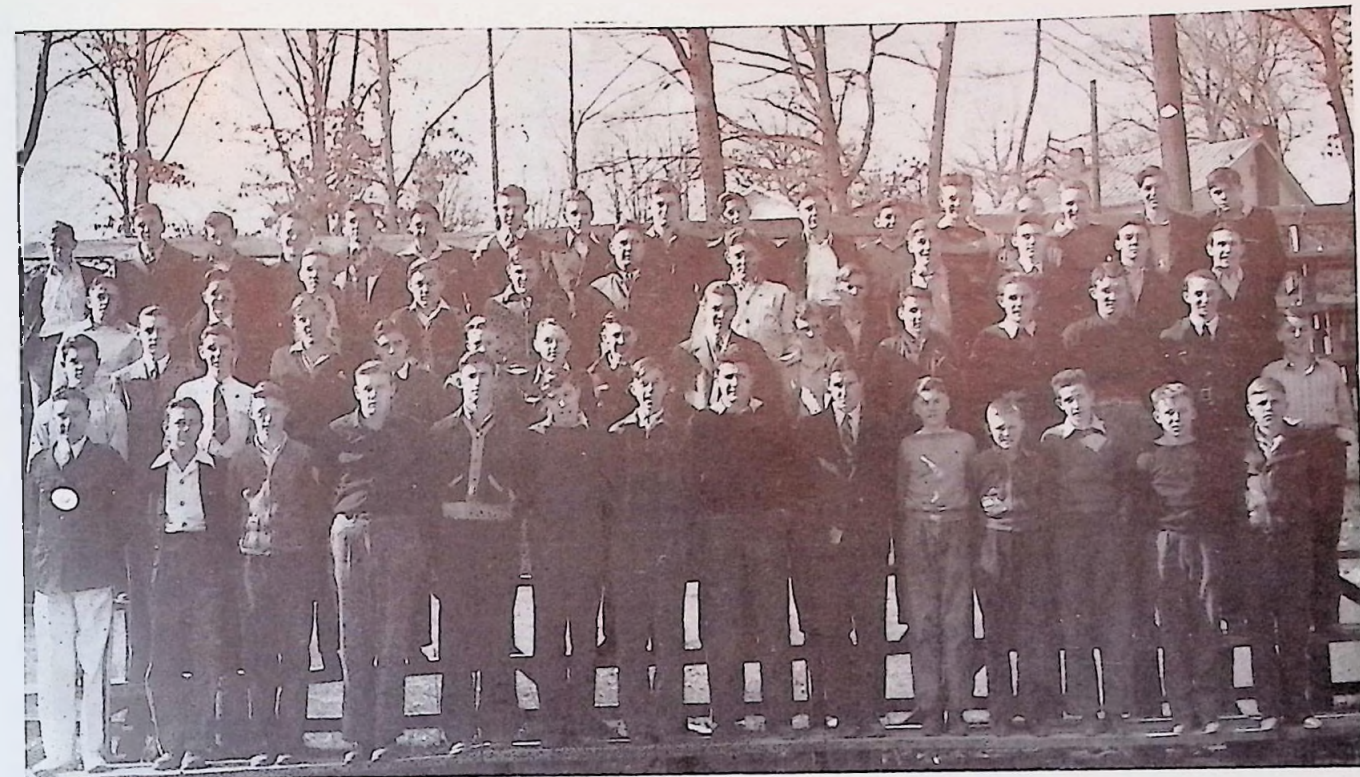
JUNIOR GIRL RESERVES . . . FIRST ROW: Betty Ruckel, Aniece Kirby, Helen O'Dell, Willie Mae Matthews, Charlotte Wardell, Mary Ann Thornton, Ruth Turner, Barbara Baldock, Mary Seal.
 SECOND ROW: Louise Boring, Hazel Gentry, Jane Curtis, Jean Cobble, Eunice Black, Miss Duggan, Advisor, Jean Johnson, Virginia Osment.
 THIRD ROW: Margaret Fagarty, Pally Leinart, Jean Leinart, Inez Smith, Barbara Gibbs, Karen Taylor, Martha Lee Pearman, Patty Hoebner.
 FOURTH ROW: Geary Reynolds, Frances Holdredge, Rosemary Johnson, Betty Fair, Alice Karnes, Mary Lloyd Cunningham, Christine Ailor.
 Page Fifty-one



SOPHOMORE GIRL RESERVES . . . FIRST ROW: Mary Gilbert Epps, Sarah Mac Shirley, Sara Weddekind, Sammie Collins, Mary Margaret Martin, Mary Margaret Painter, Fern Nicely, Betty June Rose, Mildred Bowman, Jeanette Reed, Betty Cruze, Nancy Johnson, Martha Faulkner. SECOND ROW: Geneva Sherrod, Harriet Ann Savage, Carrie Belle Morris, Dorothy Osman, Aloise Dover, Ruth Caldwell, Betty Lane, Betty Jane Julian, Glorie June Deaver, Helen Hendrix, Ella Mae Dawson, Jean Marcus. THIRD ROW: Anna Ruth Fraker, Ella Stedman, Martha Lou Nowling, Jeanette Reed, Mary Ann Williams, Verna Proffitt, Barbara Tibbs, Josephine Sterling, Katherine Mahan, Jean Vice, Mary Elizabeth Bell, Juanita Gibbs. FOURTH ROW: Betty Highbaugh, Hannah Jane Russell, Mary Ann White, Sara Murphy, Joan Warwick, Sue Ella Vaughn, Phillis Large, Ethel Rochat, Faye England, De Wilda Meyers, Ann Henson, Frances Large.



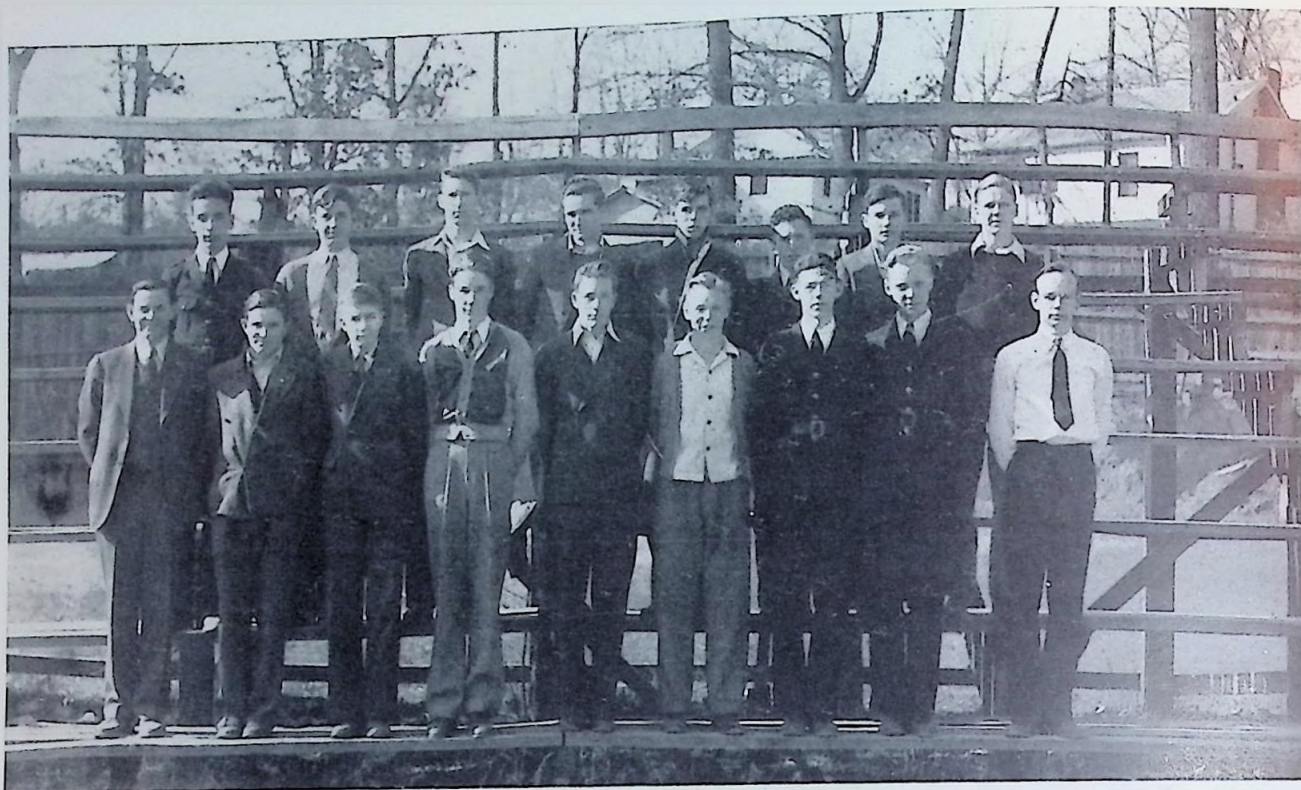
HI - Y CLUB . . . FIRST ROW: Lillard Lullrell, Lynn McCloud, O. B. Baskette, Gerwin Bowling, Ralph Stormer, Ray Towle, Victor Watson, Bud Mynatt, Albert Murrian, Bill Quigg, J. P. Lane. SECOND ROW: Mr. Whitehead, advisor, Frank Wylie, Ralph Norman, Ernie Ogg, James Warwick, Jim Henderson, Howard McCutchan, Carl Nelson, Bill Davis. THIRD ROW: Bobby Sandman, Jimmy Cobble, Ray Wedekind, Bill Yambert, Joe McTeer, Bud Evans, Joe Lay, Buster Margurat, Johnny Tindall. FOURTH ROW: Charles Moffett, Murray Loy, Grover Beeler, Jim Cowrie, Jack Norris, Jimmy Worden, Sumner Dow.



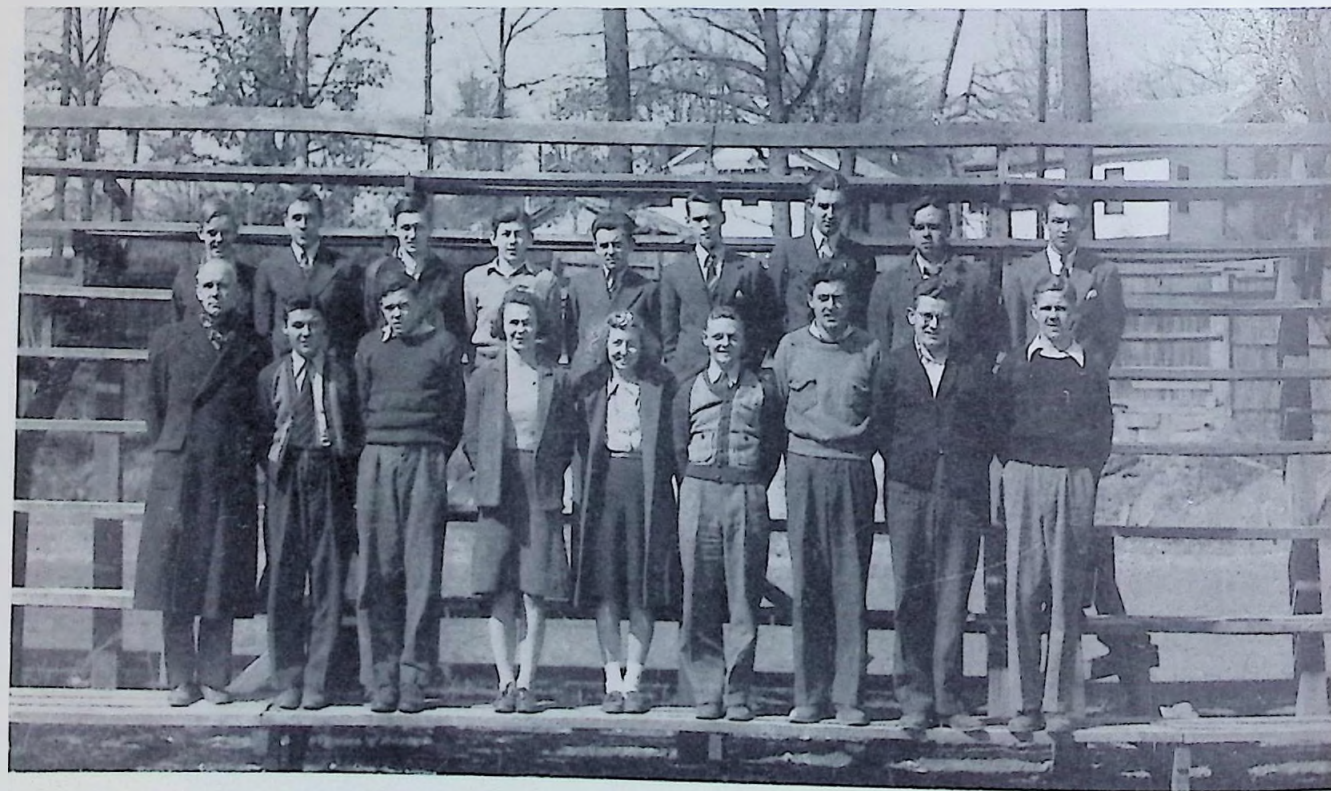
4 - H CLUB . . . FIRST ROW: Ernest Ogg, Dan Meredith, Howard Webster, Verald Monday, Mark Major, Kellso Hamilton, Eugene Grant, Frank Neuberl, Henry Chiles, Junior Seay, J. Allen Morgan, Johnny Davis, John Mathis, J. C. Kinder. SECOND ROW: R. C. Patty, Edward Minton, Harold Wolfenbarger, Gene Moore, Gene Kitts, Glen Coleman, Wayne Beavers, Don Yarnell, Fred Tillet, Fred Gheen, L. H. Greene, Halmond Atkins, Ford Owens, Everette Sharp, John Pineda. THIRD ROW: Taylor Proffitt, Frank Wiley, John Wampler, R. C. Major, Preston Gibson, Murray Loy, Paul Lawson, Kenneth Donahue, Earl Hittin, Charles Moffett, Mack Lovingood. FOURTH ROW: Eugene Kelley, Harold Major, Ralph Lee, Rubin Kempton, Glenn Wells, Morris Snow, Ed Bounds, Gordon Davis, Glen Meredith, James McMillan, Ed Brandon, Alvin Elliott, Buddy Zoller, Earl Tolson, Richard May, Ralph Bounds.



HOME ECONOMIC CLUB . . . FIRST ROW: Miss May, Advisor: Miss Davidson, Advisor: Aniece Kirby, Marie Cook, Peggy Coker, Bobbie Sterling, Susan Jones, Marion Holmes, Helen Harrell, Elizabeth Nickle, June Anderson, Mildred Beal, Dee Leuthke, Faith Bean, Dorothy Wylie, Barbara Tibbs, Nancy Bell, Roberta Shepard. SECOND ROW: Miss Collier, advisor: Hazel Minton, Joyce Roberts, Doris Palmer, Mary Akridge, Virginia Gibson, Susan Peacher, Emmalee Winegar, June Talley, Wilma Reed, Alma Cluck, Mildred Proffitt, Marie Tipton, Marjorie Kimsey, Alice Rose, Ann Morris, Phyllis Slaughter. THIRD ROW: Evelyn Booker, Carolyn Cruze, Noama Viles, Charlene Smith, Edna White, Helen Tillery, Wilma Miller, Mary Ella Burkhardt, Mary Lou Blankenship, June Steele, Elsie Dyer, Dorothy Conger, La Verne Tate, June Lusk, Ellen Steadman, Rachel Cox, Dorothy Cooper. FOURTH ROW: Edith Blackard, Helen Hobson, Marrian Akers, Juanita Gibbs, Charlie Stalling, Martha Nowlin, Ruth Caldwell, Jane Collette, Nancy Cox, Jean Nicklos, Eloise Huff, Kathryn Mahan, Reba Inklebarger, Waywonia Satterfield, Peggy Smith, Jo Ann Scruggs.



MOVIE OPERATORS . . . FIRST ROW: Mr. Whitehead, advisor; John Currier, Wendell Ogg, W. L. Fuller, Gordon Davis, Frelan Gaddard, Victor Watson, Herbert Mynatt, Wilbur Sims.
SECOND ROW: Summers Hinshaw, Howard McCutchan, Robert McGhee, Carl Webster, David Highbaugh, J. L. Powell, Clarence Brackens, Bill Perry.



SAFETY PATROL . . . FIRST ROW: R. C. Searle, Sponsor, Burl Steele, Harold Bounds, Imogene Neuberl, Dorothy Hargis, John Cassaday, Bill Edwards, Harold Keene, Bill Perry.
SECOND ROW: Victor Luster, Gordon Davis, R. G. Mitchell, Alvin Elliott, R. T. Atkins, Jack Luttrell, Frank Russell, Joe McTeer, H. O. Arnold.
NOT IN PICTURE: LeRoy Hansard, Harvey Altan, Billy Searle, Jack Wilson, Buddy Mynatt, Wayne Blair, Clyde East, Bobby Bryan, James Pruett, Rubin Kempton, Carl Webster, Mack Cameron.



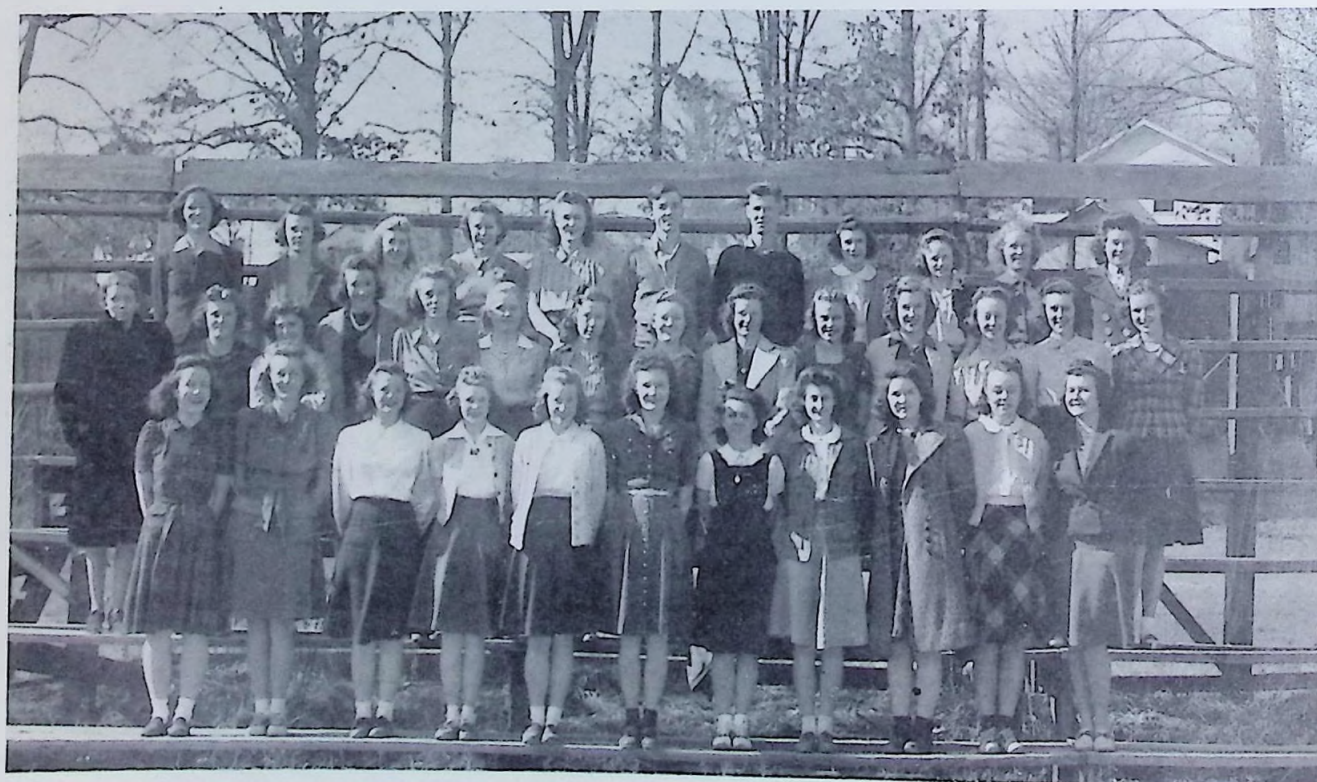
DEBATING CLUB . . . FIRST ROW: Elizabeth Nickle, Wanda Rasar, Miss Weaver, advisor, Nancy King, Barbara Clark, Charlotte Stoffel, Jean Cobble, Betty Couch, Eunice Black.
SECOND ROW: Asa Ambrister, Harold Godfrey, Mac Lovingood, Barbara Hope Haynes, Julie Wrenne, Mildred Rucker, Lenora Caldwell, Henry Lassing, Sonny Baker.
THIRD ROW: Donald Van Hoozier, Bobby Heathman, David Black, Charles Moffett, Murray Loy, Charles Edington, Billy Wallace.



MONITORS . . . FIRST ROW: Martha Solomon, Lorraine Rect or, Marion Neighbert, Hazel Minton, Leola Linkous, Willie Mae Matthews, Margaret Humphrey, Katharine Sifton, Barbara Hope Haynes, Marilyn Mashburn, Julie Wrenne, Elizabeth Truan, Mary Elizabeth Brown.
SECOND ROW: Willie Ruth Glover, Evelyn Sonson, Pat Kunkel, Cleo Pratt, Helen Owens, Mary Clara Pyle, Mildred Crowder, Helen Dewine, Freda Fields, Joyce Roberts, Doris Palmer, Jeanne Whiter.
THIRD ROW: Mr. Whitehead, Advisor, Jeral Shoun, John Cooper, Thelma Ewing, Glyndeon Towle, Margaret Pinkston, Patty Hoebner, Inez Underwood, Violet Stillman, Roscoe Smith.
FOURTH ROW: Jimmy Warden, Tom Cartwright, Paul Henson, J. P. Lone, Charles Hobby, Ada Hampson, O. B. Baskette, Jack Marshall, Bob Creech.



SKETCH CLUB . . . FIRST ROW: Phyllis Slaughter, Mr. Dougherty, advisor, Lenora Caldwell, Marion Clark, Jeanne McWhirter, Marion Holmes, Lillian Couch, Jean Rugg, Iris Faulkner.
SECOND ROW: Frances Bell, Karen Taylor, Bobby Sterling, Mildred Beal, Dorothy Dyer, Julie Wrenne, Mickey Rucker, Catherine Mahan.
THIRD ROW: Floyd Snoddarby, Claude Hobson, Rolland Anderson, Charles Moffett, Bill Mauk, Geary Reynolds, Cecile Hall, Mariha Cox.
NOT PICTURED: Helen Harrell, Lucy Mitchell, Jackie Perdue, Juanita Harris, Harold Godfrey, Billie McKinney, Elsie Dyer, Fredrick Taylor, Sarah Mae Shirley, Clifford McFarland, Bill Temple, Sarah Wedekind, Howard Webster, Mildred Keesling, Jimmie Kurnick, Helen Hendrix, Joyce Irick.



COMMERCIAL CLUB . . . FIRST ROW: Susan Jones, Marion Holmes, Helen Harrell, June Anderson, Elizabeth Nickle, Willie Mae Matthews, Charlotte Wardell, Lena Elmore, Avonell McCarl, Betty Hughes, Margaret Pinkston.
SECOND ROW: Miss Stone, Advisor, Eva Johnson, Edith Bryant, Mary Akridge, Virginia Gibson, Susan Peacher, Margie Ellis, Kathleen Faust, Eva Hubbs, Georgia Lee, Emmalee Winegar, Marilyn Mashburn, Catherine Tindall, Betty Hicks.
THIRD ROW: Charlie Hobby, Imogene Neubert, Dorothy Hargis, Zenobia Cobb, Verna Gault, Jimmy Yardley, Robert Burnett, Mary Claire Pyle, Mary Winegar, Violet Stillman, Reba Inklebarger.



DRAMATIC CLUB . . . FIRST ROW: Nancy King, Lenora Caldwell, Betty Ruckel, Betty Couch, Lillian Couch, Wanda Raser, Elizabeth Nichols, Jean Cobble, Eunice Black, Charlotte Stoffel, Marion Clark, Miss Weaver, Advisor.
SECOND ROW: Deane Williams, Reba Inklebarger, Barbara Hope Haynes, Julie Wrenne, Mickey Rucker, Barbara Clark, Sue Ella Vaughn, Geary Reynolds, Eloise Dover, Jeanne MacWhirter, Marie Cook.
THIRD ROW: Murray Loy, Jim Cawse, Bill Quigg, David Black, Asa Ambrister, Henry Lassing, Victor Watson, Billy Wallace, Donald Van Hoozier, Bobby Heathman.
FOURTH ROW: Ralph Bulfs, Frank Wylie, Lynn McCloud, Sonny Baker, Charles Edington, Mac Lovingood, Harold Godfrey, Charles Moffett.



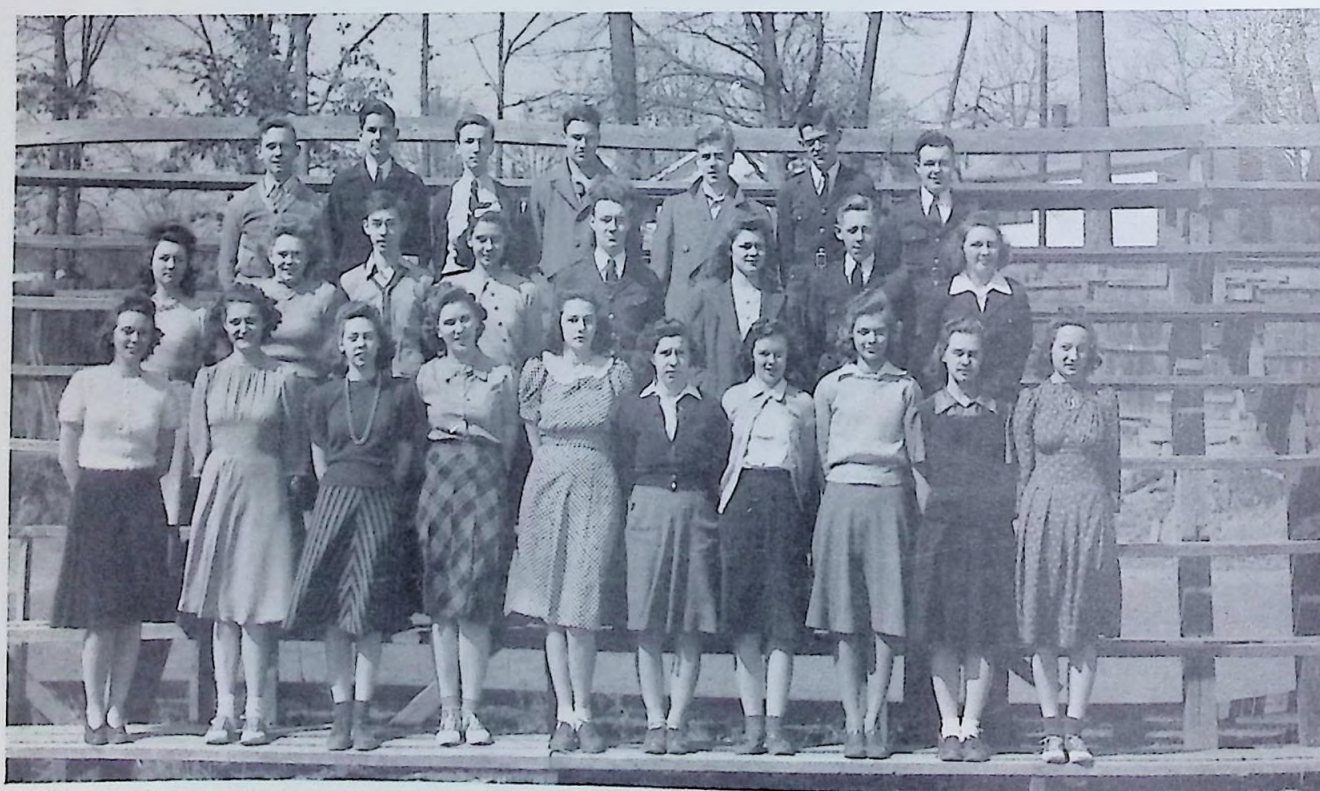
CHEMISTRY CLUB . . . FIRST ROW: Hazel Minton, Blanche King, Wilma Miller, Stella Malliby, Jane Curtis, Alma Cluck, Barbara Switzer, Edna Berney, Mary Burkhardt, Mary Alice Garvey.
SECOND ROW: Mr. Whitehead, Advisor, W. L. Fuller, Tom Cartwright, Gordon Dean, Henry Lassing, Sumner Dow, Karen Taylor, Eunice Black, Martha Lee Pearman.
THIRD ROW: Jeral Shoun, Gordon Davis, Clarence Bracken, R. D. Colthorp, J. C. Turner, Earl Acuff, John Welmers, Ralph Stormer, John Wampler.
FOURTH ROW: Frank Wylie, David Carter, John Cooper, Roy Wedekind, LeRoy Ogle, Bill Yambert, Carl Nelson, Edwin Smith.



FRENCH TOURNAMENT . . . FIRST ROW: Ruby Monday, Viola Galle, Joe Lay, Jimmy Worden, Susan Peacher, Martha Isbel.
SECOND ROW: Julie Wrenne, Hazel Gentry, Leola Linkous, Betty Fair, Mary Eleanor Jones, Mrs. Van Gilder, Advisor.
THIRD ROW: Elizabeth Truon, Betty Jo Powers, Frances Haldredge, Patty Haebner, Sarah Louise Walrous, Marie Cook.



LIBRARY CLUB . . . FIRST ROW: Nancy Bell, Avery Capps, Edna Berney,, Lena Elmare, Jo Banker, Pauline Minton, Mrs. Rodgers, Advisor.
SECOND ROW: Faye England, Elenora Hall, Martha Lee Pearman, Carrie Belle Morris, Ann Elizabeth Moore, Hazel Capps, Claudia Smith.
THIRD ROW: Jean Hickman, Joan Warwick, Charles Malfell, Avanel McCart, Rosalee Kirby.



LATIN TOURNAMENT . . . FIRST ROW: Barbara Clark, June Talley, Julie Wrenne, Elizabeth Truon, Mary Alice Garvey, Sally Gray, Martha Lee Pearman, Claudia Smith, Zoe Jeffers, Marie Cook.
SECOND ROW: Margaret Keith, Eunice Black, David Black, Karen Taylor, Henry Lassing IV, Faye England, Roy Wedekind, Sarah Murphy.
THIRD ROW: Jeral Shown, John Cooper, John Wampler, Le Roy Ogle, Carl Nelson, Stewart McCorkle, Frank Wylie.



HIKING CLUB . . . FIRST ROW: E. M. Stuart, Sponsor, Niurial Tipton, Dorothy Wood, Martha Nowlin, Marjorie Waldrep, Marie Cook, Louise Warwick, Miss Mary May, Sponsor.
SECOND ROW: Barbara Goddard, Rachel Cox, Violet Stillman, Louise Linebaugh, Faith Bean, Katherine Mahan, Wilbur Simms.
THIRD ROW: Elnora Butler, Iris Faulkner, Katherine Sittin, Virginia Osment, Willie Ruth Glover, Jim Grove, Noel Morrel, Mary Catherine Brown, Phyllis Slaughter, Collette Hill, Barbara Switzer, Margaret Butler, Katherine Davis, Louise Rice.
FOURTH ROW: Summers Hinshaw, Charles Wollenbarger, David Massengill, Grant Whitney, Jean Sayres, Virginia Wilson, Johnny Cox.
FIFTH ROW: Howard McCutchan, Roy Wedekind, C. B. Clark, Freeland Goddard, Stewart McCorkle, Henry Chiles, David Grove.
BACK ROW: Bill Roberts, Howard Stormer, Paul Henson, Ed Clark.



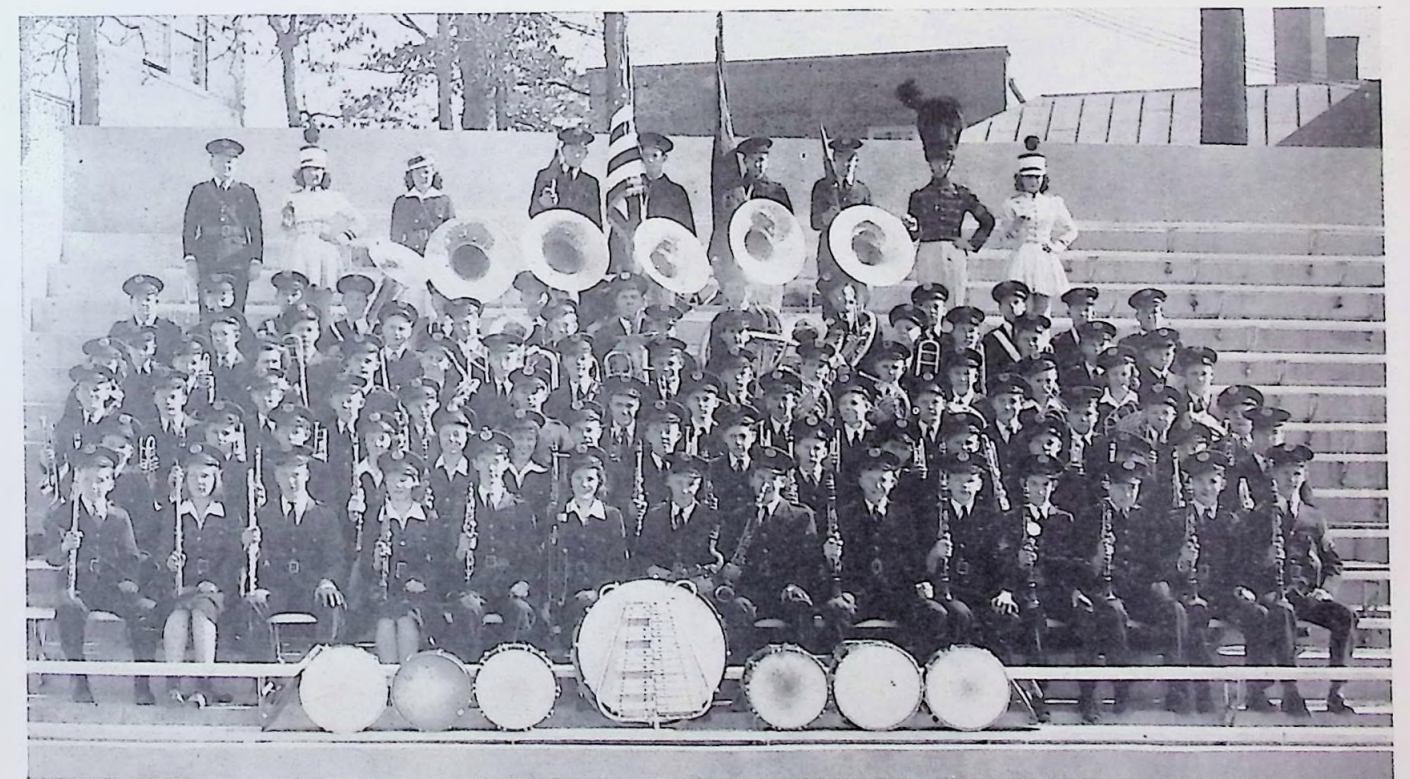
GLEE CLUB . . . FIRST ROW: Miss Jones, Director, Virginia Petree, Accompanist, Margaret Stewart, Bettye Henson, Faith Bean, Margaret Hunter, Betty June Rose, Louise Warwick, Jessie Ruth Newman, Hazel Rigsbee, Marie Tipton, Sunny Mae Bondurant, Marjorie Kimsey, Ann Morris.
SECOND ROW: Nancy Prevost, Harriett Savage, Mary Ann White, Geneva Sherrad, Mary Gilbert Eppes, Naomi Viles, Joyce Roberts, Doris Palmer, Virginia Gibson, Polly Leinert, Bobbie June Hallingsworth, Kathleen Gorman, Rachel Cox, Mary Lou Watson.
THIRD ROW: Margaret Coker, Wanda Maples, Charlyne White, Viola Galle, Mary Alice Garvey, Marion Lewis, Sara Lou Watrous, Wanda Swaggerty, Kathleen Van Story, Martha Cox, Frances Bishop, Carolyn Scott, Elenora Butler, Charlysie Hobby.
FOURTH ROW: Walter Taylor, Fredrick Taylor, Jimmy Joe Edmondson, Wendell Ogg, Bill Kirby, Zenna Stinelle, Grant Whitney, Melvyn Lady, Fred Tilletie, Charles Hobby, Bob Creech, Carl Smith, Tom Wayland.



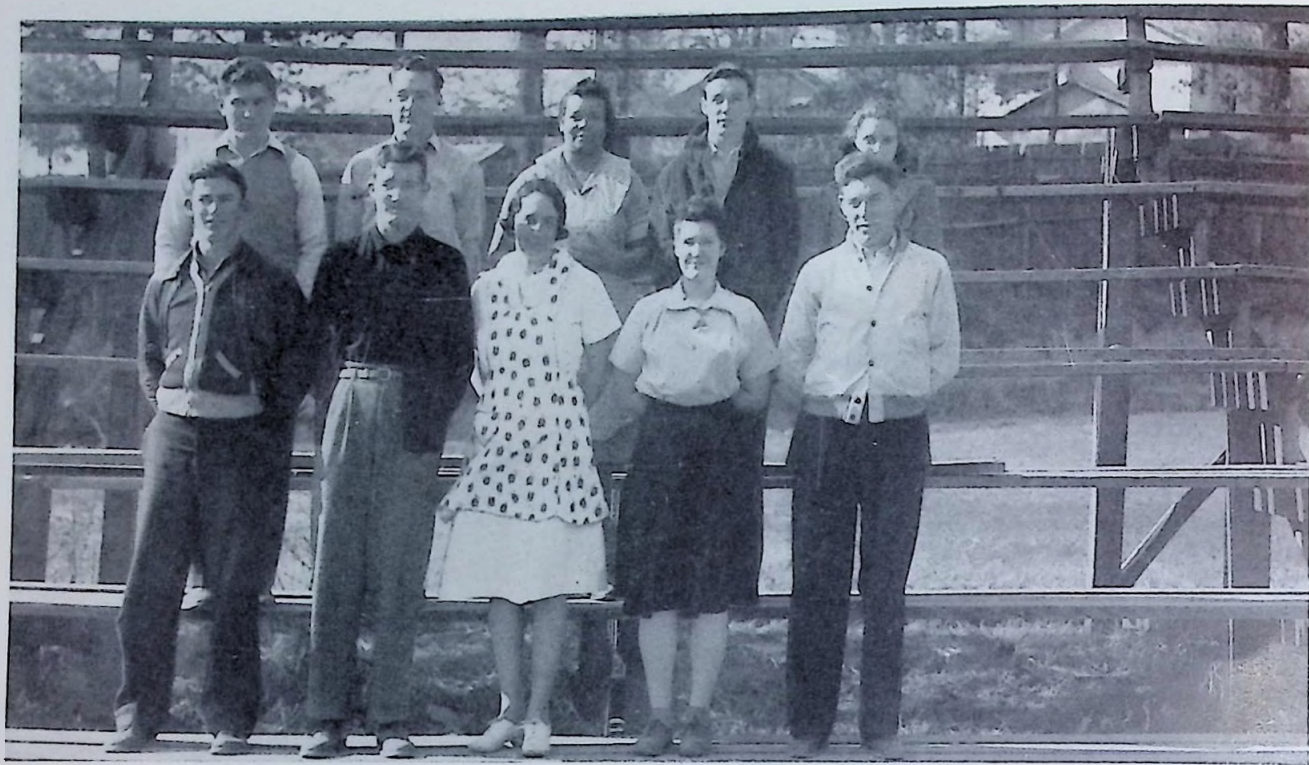
GIRL'S CHORUS . . . FIRST ROW: Mildred Greer, Grovett Hubbs, Mildred Barnes, Velma Lindsay, Mellie Mae Maples, Mary Margaret Sheets, Elizabeth Long, Dorothy Wood.
SECOND ROW: Juanita Clark, Lillian Nelson, Mary Louise Pascall, June Speare, Louise Linebaugh, Mary Louise Everett, Betty Hughes.
THIRD ROW: Miss Jones, Conductor, Margaret Moneyhun, Billie McKinney, Hazel McAfee, Helen Jones, Georgene Warren.



ORCHESTRA . . . FIRST ROW: Alice Heifner, Betty Jo Powers, Sammie Collins, Jimmy Cobble, Martha Cox, Frances Lovingood, John Welmers, Thelma Ewing.
SECOND ROW: Ralph Elkins, Deane Williams, Albert Murrian, Mr. O'Dell Willis, Conductor, Herron Hall Gresham, R. B. Burnett, Jack Davis, Ray Wedekind, Hazel Gentry, Lillard Luttrell, Betty Cruze, Dorothy Thomas, Garvin Bowling.
THIRD ROW: O. B. Baskette, Mary Eleanor Jones, Joe Smallman.



BAND . . . FIRST ROW: John McTeer, Thelma Ewing, Bill Yambert, Sarah Murphy, John Welmers, Martha Cox, Tom Dyer, Carlyle Alexander, Jack Norris, David Shirley, Garvin Bowling, Kelly Lynch, Nan Sherrad, Jimmy Cobble.
SECOND ROW: Carl Morris, Douglas Bailey, Bill Davis, Darthey Thomas, Betty Cruze, Nancy Johnson, Frank Miller, Glenn Kennedy, Bobby Luttrell, Ray Watson, Charles George, Kenneth Gresham, John Allaman, Rufus Smith, Wallace Cluck, Edwin Smith.
THIRD ROW: Albert Murrian, Lillard Luttrell, Weston Murrian, Roy Wedekind, Dennis Harrell, Charles Doughty, Gene Huskinson, Paul Hutton, Buster Margural, Duane Armstrong, M. M. Winkle, E. C. Walker, David Smith, Charles Blanc, A. L. Acker.
FOURTH ROW: Mary Douglas Williams, Fred Sherrad, Frances Lovingood, Joe Fielden, Ray Towle, Bill Roberts, Joe Lay, R. B. Burnette, Bobby Cunningham, Bud Evans, Robert Winters, Bill Broome, Elenora Butler, Martha Faulkner, Roland Anderson.
FIFTH ROW: Gene Kitts, Roland Keezel, Sonny Baker, Joe Smallman, Stewart McCorkle, James Warwick, Carl Hubbs, John Cooper, Charles Rudder, Herbert Mynall, Billy Wallace, Carl Nelson, Grady Renfro, Clyde East.
SIXTH ROW: L. H. Dalton, Herron Hall Gresham, Boyd Thomas, Everette Sharp, Wilbur Sims, Summers Hinshaw, Preston Gibson, James Heatherly, Frank Wylie, John Fitch, Ralph Butts, Victor Watson, Joe McTeer.
SEVENTH ROW: Mr. O'Dell Willis, Director, Reba Inklebarger, Majorette; Patti Sue Lewis, Sponsor, J. D. Underwood, flag guard; Jimmy Worden, Flag Bearer; Ernie Ogg, Flag Bearer; Henry Lassing, Flag Guard; O. B. Baskette, Drum Major; Jean Leinart, Majorette.



KITCHEN CLUB . . . FIRST ROW: Mark Major, Ford Owen, Mrs. Hunter, Cafeteria Manager, Mary Seal, Murray Loy.
SECOND ROW: David Cawse, Chan Caldwell, Florence Teague, helper, Charles Moffett, Hazel McAfee.



ATHLETICS



FOOTBALL

This year coaches Robinson and Eubanks turned out another fine team, therefore a very fine record. The Bobcats won their eighth game of the season, their twentieth straight victory, before being tied by Jackson, Tennessee, 7-7. This string of victories dated back to 1938, when the Bobcats were defeated by Riverside Academy, 13-6. After playing Jackson, the Bobcats had only one game left to play. This was with Knoxville High, our arch rivals. The final score of this game was 25-13, in favor of the Bobcats.

Led by Captain Jim Cawrse, the Bobcats scored 251 points while holding the opposition to 33. Standout players for the year were Captain-elect, Ford Owens at end; Chan Caldwell at end, or at Tail back; Jim Cawrse at guard; Charles Moffett, R. E. Selby, and Howard Painter in the backfield.

At the banquet Coach Robinson awarded thirty-seven letters, twenty-five to football players, four to managers, and eight to cheer-leaders. Those receiving awards were Retiring Captain Jim Cawrse, Captain-elect Ford Owens, Chan Caldwell, Jim Payne, Carl Hubbs, Glenn Wilson, Mack Hansard, Bob Cawrse, Murray Loy, Lee Tucker, Sumner Dow, Wilbur Lawson, H. R. Proffitt, Frank Neubert, Charles Evans, Grover Beeler, Mack Lovingood, R. E. Selby, William Zachary, and Edwin Smith. Managers. Halmond Adkins, Johnny Tindall, Robert Burnette, and Blake Brock. Cheer-leaders: Hayne Blakely, Walker Bailey, Harold Godfrey, Barbara Ailor, Genevieve Atchley, Louise Boring, Aniece Kirby, and Inez Smith.



CAPTAIN JIM CAWRSE

FIRST ROW: Lawson, Painter, White, Tucker, Loy, Chan Caldwell, Owens, DePue, Moffett.
SECOND ROW: Smith, Mauk, Proffitt, Snider, Bob Cawrse, Neubert, Payne, Galandis.
THIRD ROW: Dow, Beeler, Zachary, Thomas, D. Cawrse, Murray, Hubbs, Hansard.
FOURTH ROW: Wilson, Evans, Vineyard, Bill Caldwell, Selby, Spencer, J. Cawrse, Captain.

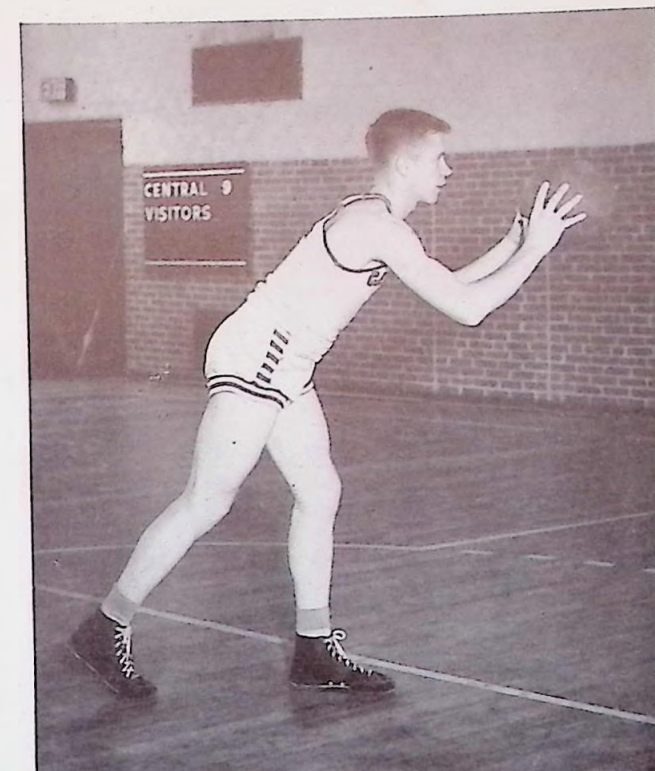
BASKETBALL

Due to the flu epidemic and the mid-term examinations the Bobcats were late in starting their season. They played only twelve games — nine during the regular season and three in the tournament.

In regular season play the Bobcats won six and lost three games. Victories included two from Morristown; one from Bristol; one from Carters; one from Young; and one from Knoxville High.

The highlight of the season was the 31-29 victory over our arch rival, Knoxville High. The game was slow in getting started; the Bobcats were trailing 9-15 at the half. During the third quarter the teams were about evenly matched. Then came the fourth and final quarter. Walker Bailey and Charles Moffett started hitting the basket from all angles. The score was tied 29-29 with only twenty seconds remaining when Ford Owens shot a beautiful one hand game winning basket just before the whistle blew, giving the Bobcats a victory over the Trojans.

In the tournament the Bobcats defeated Carters, 41-16;



CAPTAIN WALKER BAILEY



Bailey, DePue, Chan Caldwell, Owens, Cox, Bill Caldwell, Hansard, Moffett, Cable, Winegar. Mascot — Jackie Smith.

then they defeated Stair, 34-21. These two victories advanced the Bobcats to the finals, but here they were defeated by Knoxville High, 28-19.

Members of the Bobcat Squad were Walker Bailey, who averaged over twelve points per game, incidentally Walker is one of the best basketball players Central has ever had; Ford Owen, the boy that would do anything to win; Charles Moffett, a star both offensively and defensively; Bill Caldwell, a sophomore who is making a name for himself as a basketball player; Parvin Cox, the most improved man on the team. keep an eye on him next year; Bob Cable, a good defensive man who often stars on the offense with a one hand shot. Jack Moore and Jay Hansard, dependable reserves, also won letters.

THE '40 SEASON RECORD BASKETBALL

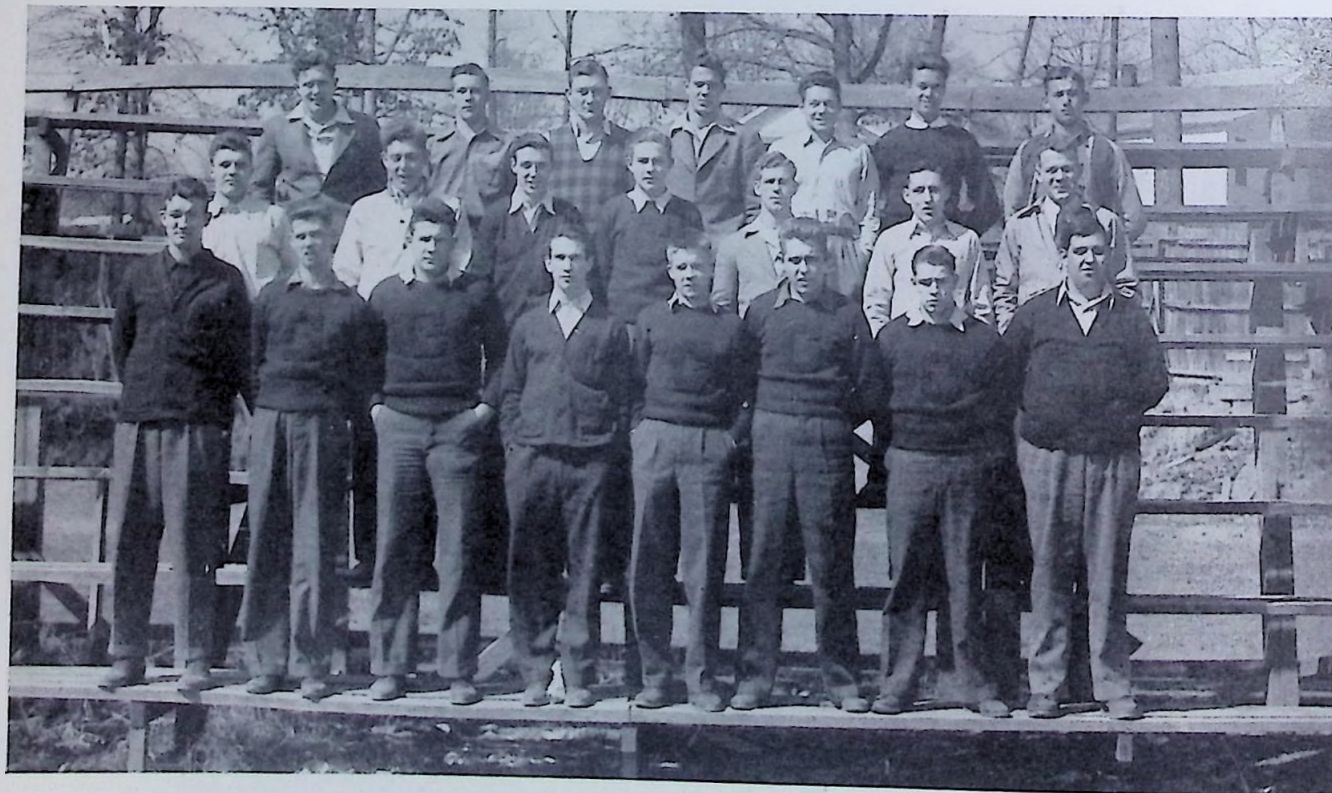
Central	42	Morristown	22
Central	39	Morristown	19
Central	32	Young's	33
Central	30	Young's	22
Central	27	Bristol	17
Central	27	Bristol	32
Central	31	K. H. S.	29
Central	14	K. H. S.	25
Central	35	Carter	11
Total	277	Total	210

BASKETBALL TOURNAMENT

Central	41	Carters	16
Central	34	Stair	21
Central	19	K. H. S.	28
Total	94	Total	65

FOOTBALL

Central	33	Milligan Frosh	0
Central	46	Bryson City	0
Central	21	Rule	7
Central	46	Greeneville	0
Central	6	Young's	0
Central	13	Gaffney, S. C.	6
Central	6	Bristol, Tenn.	0
Central	51	Bristol, Va.	0
Central	7	Jackson, Tenn.	7
Central	25	K. H. S.	13
Totals C. H. S.	251	Opponents	33



"C" CLUB . . . FIRST ROW: Ford Owens, Robert Burnette, Frank Neubert, Mac Lovingood, Walker Bailey, R. E. Selby, Harrison Sinder, George Galandis.
SECOND ROW: Graver Beeler, Murray Loy, Charles Moffett, Halmond Atkins, Bill Mauk, Johnny Tindell, Wilbur Lawson.
THIRD ROW: Glenn Wilson, Levi White, LLee Tucker, Jim Cowrse, Sumner Dow, Cori Hubbs, Mark Majors.

Kays Ice Cream

Convenient Locations . . . 2561 East Magnolia
2032 North Broadway
1248 North Broadway
1211 East Main Ave.
706 East Vine Ave.
1100 North Central Ave.
3400 East Magnolia
309 West Church
146 East Tennessee Ave.
Broadway & Mineral Springs Rd.
Fifth Ave. and Randolph St.
Also . . . Maryville, Clinton, LaFollette

•
TWENTY
DIFFERENT
FLAVORS
•
MALTED MILKS
•

FOUNTAIN CITY . . . 4501 NORTH BROADWAY

Pony Carts All Over Town

KAYS OF KNOXVILLE, Inc.

2564 Magnolia Avenue

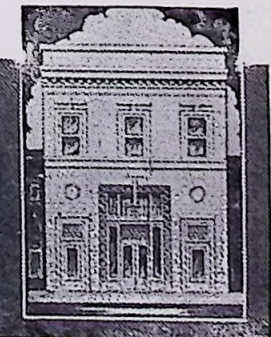
PHONE 2-8113

SCHOLARSHIP LOANS

THE BANK FOR THE INDIVIDUAL takes pleasure in making loans to young men and women as an aid to furthering an educational program. A co-maker conversant with your background, ability and aims is all that is required. We will be glad to receive applications for Educational Loans from students who cannot otherwise finance the expenses of a higher education. Remember . . . "We do things your way if humanly possible."

Member Federal Deposit Insurance Corporation

Morris Plan Bank
♦ OF KNOXVILLE ♦
THE BANK for the INDIVIDUAL



"Buy With Confidence"

**MORTON - McCRARY
MOTORS, Inc.**

CHRYSLER - PLYMOUTH
DISTRIBUTORS

Drive a Fluid Drive Chrysler
No Shifting of Gears

GOOD USED CARS

931 - 937 North Central Avenue

PHONE 3-2115

Meet your friends

... at ...

Galo

ICE CREAM CO.

Dial 2-8911

JOSTEN'S

America's Finest School Jewelry
COMMENCEMENT INVITATIONS
MEDALS and TROPHIES
FACTORY — Owatonna, Minnesota

FOUNTAIN CITY FLORIST

ROBERT W. STORMER, *Proprietor*

CITY-WIDE DELIVERY

DIAL 6-2731

NIGHT CALLS 6-1405

"Say it With Flowers" — But Say it With Ours

VALSPAR

THE NAME THAT
HOT WATER
MADE FAMOUS



**PAINTS
VARNISHES
ENAMELS**

"KEEP THE MILL RUNNING"
Tennessee
MILL & MINE SUPPLY CO.
KNOXVILLE, TENN.

406 - 12 State Street

Phone 3-2161

CHOOSE YOUR FUTURE
WITH CARE . . .

Choose the one profession open to
girls of average means which assures an
interesting and successful future.

BEAUTY CULTURE

AS TAUGHT BY US, PREPARES YOU
FOR FINANCIAL SUCCESS IN A MOD-
ERN AND SIMPLE MANNER.

• Visit this School or write for our
Free Booklet . . .

**TENNESSEE SCHOOL of
BEAUTY CULTURE**

"The South's Leading Beauty School"

BUY EVERYTHING

MUSICAL

FROM

CLARK & JONES

IN KNOXVILLE

COMPLIMENTS
... of ...

**ARLINGTON
Service Station**

SUPER SERVICE

2500 North Broadway — Phone 2-9527

WORMSER HAT STORES

"Hatters to Men"

Since 1894

525 South Gay Street — Knoxville, Tennessee

Modern Facilities
and
Efficient Service

**PARK
NATIONAL
BANK**

Member Federal Reserve System
and Federal Deposit Insurance Corp.

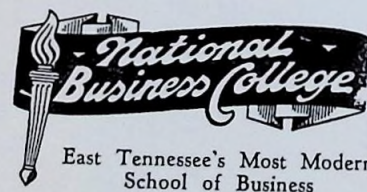
Call Us For Complete
Road Service

EXIDE BATTERIES
GATES TIRES and TUBES
MOBILE GAS

At The Sign of the Red Horse
Call 6-1127 for Quick Service

**ROBBINS' SERVICE
STATION**

BRICE ROBBINS, Manager
"Tommy", Asst. Manager
"HAPPY" HODGE, Lubrication Manager



COMPLETE
PHOTOGRAPHIC LINE
CAMERAS, DEVELOPING
PRINTING and ENLARGING

FRANK L. ROUSER COMPANY
INC.
317 West Church Avenue — Dial 3-0409

"We Shoe the Whole Family"

Spence Shoe Co
430 SO. GAY ST.

MEN
Florsheim
Jarman
Fortune

LADIES
Florsheim
Peacock
Johnson
Vitality

COMPLIMENTS OF
JOHN H. SCHAAD
Dealers in
HAY, GRAIN, FEED and FIELD SEED
114 South Central Avenue
PHONES: 3-0234 and 2-2040

To The President of The Class
of "1941"



To you and your classmates—
we extend best wishes and our
thanks for permitting us to be
YOUR OFFICIAL PHOTOGRAPHER



THE OLDEST BANK

—IN—

KNOX COUNTY

FOUNTAIN CITY BANK

MEMBER FEDERAL DEPOSIT INSURANCE CORPORATION

MEETING Your Personal Needs

SEE

COMMERCIAL BANK AND TRUST COMPANY

B. L. HUFF, *President*

COMPLIMENTS OF

Dr. S. B. Hamilton

and

Associate Dentists

Corner Gay Street and Wall Avenue

Telephone 3-3321

Knoxville, Tennessee

SCHOOL & OFFICE SUPPLY CO.

STATIONERS

OFFICE OUTFITTERS

Telephone 3-7145

407 W. CLINCH AVENUE — KNOXVILLE, TENNESSEE

COMPLIMENTS OF

max friedman - jeweler

"The Store That Confidence Built"

304 South Gay Street

PHONE 3-5187

THORNTON DRUG COMPANY

HOTEL AVENUE — FOUNTAIN CITY

COMPLIMENTS OF

RALPH K. ADCOCK

COUNTY REGISTER

KNOX COUNTY

COMPLIMENTS

OF

THERON D. WILSON

Trustee

KNOX COUNTY

WRECKER AND TIRE SERVICE

HENSLEY MOTOR SERVICE

4220 NORTH BROADWAY FOUNTAIN CITY

Operated By

STALEY HENSLEY and BEARL HENSLEY

Phone 6-1103

PAINTING, BODY, and FENDER REPAIRING

TILLER'S

PRODUCTS:

CANDIES

POP CORN

NUT MEATS

CRACKLINGS

SANDWICHES

POTATO CHIPS

POTATO STICKS

H.A.T. FOOD PRODUCTS CO.

1801 North Broadway — Phone 3-2498

ROSE

1321 NORTH BROADWAY



DR. PEPPER BOTTLING CO.

KNOXVILLE, TENNESSEE

BEST WISHES TO CENTRAL HIGH SCHOOL
AND SENIORS

HAZEN KREIS
SHERIFF

KNOX COUNTY
KNOXVILLE, TENNESSEE
EX BOBCAT and FOUNTAIN CITIAN

COMPLIMENTS
OF

**KNOX COUNTY
WATER
COMPANY**

SERVING
FOUNTAIN CITY'S
WATER NEEDS

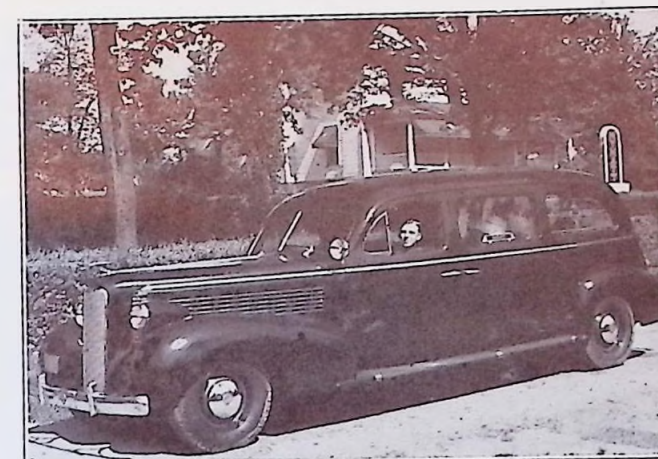
THE
HOPE BROTHERS CO.
JEWELERS

613 Market Street
KNOXVILLE, TENNESSEE

"Knoxville's Oldest Jewelers"

DIAMONDS, WATCHES,
RINGS, PENS, VANITIES,
COSTUME JEWELRY
WEDDING ANNOUNCEMENTS.
VISITING CARDS

MANN'S



MYNATT FUNERAL HOME
— AMBULANCE —
6 - 1 1 1 2
SIX-ELEVEN-TWELVE

**COMPLETE
OUTFITTERS**

**FOR MEN
AND BOYS**

FOR STYLE
LEADERS —
FOR TRUE
ECONOMY AL-
WAYS HEAD FOR



PREVOST & RHODES
319 West Clinch
BEHIND HAMILTON BANK

**FOUNTAIN CITY FURNITURE
COMPANY**

WESTINGHOUSE ELECTRIC APPLIANCES
MAYTAG WASHERS
ZENITH RADIOS
A Complete Line of Furniture
PHONE 6-2819

BEST WISHES FROM...

THE SAM TOOLE CANDY CO.

DISTRIBUTORS OF

BUNTE'S WORLD FAMOUS CANDIES

NESTLE'S CHOCOLATES

and

MANY OTHER BRANDS

CONGRATULATIONS

to the Seniors of Central High School and with
best wishes for their future success and happiness

The Draughton (Drawn) Business College

KNOXVILLE

TENNESSEE

ENTER ANY TIME

CATALOG FREE

FULLY ACCREDITED

EAT
EVERY
DAY



FOR
BETTER
HEALTH



CONGRATULATIONS SENIORS!

VISIT

PARKER BROS. CO., Inc.

"The Complete Farm Supply Store"

418 - 420 - 422 WALNUT STREET

Dial 2-6155

Headquarters For

HARDWARE, HARNESS, SEEDS, FEED
FERTILIZER, ROOFING
PAINTS, FENCING and ALL FARM NEEDS.

Catering to School Clubs

and

Company Banquets



"Where an occasion is an Event"

W. C. SHARP

DRUG STORE No. 1

"The Prescription Store"

2067 N. Broadway — Hal Dick's Store

PHONES: — DIAL 3-5139 — 3-5130 or 2-9368

KNOXVILLE, TENNESSEE

CONGRATULATIONS and BEST WISHES

—From—

JUSTUS & COMPANY

FARM MACHINERY — FIELD SEEDS

FERTILIZERS

500 East Jackson Avenue — Phones 2-6183 — 2-6184

TALLEN
DRUG COMPANY

Whitman — Hollingsworth

CANDIES

6-1947 — PHONES — 2-9949

FOUNTAIN CITY, TENNESSEE

COMPLIMENTS OF

GLAZER IRON & METAL
COMPANY

LOUIS GLAZER

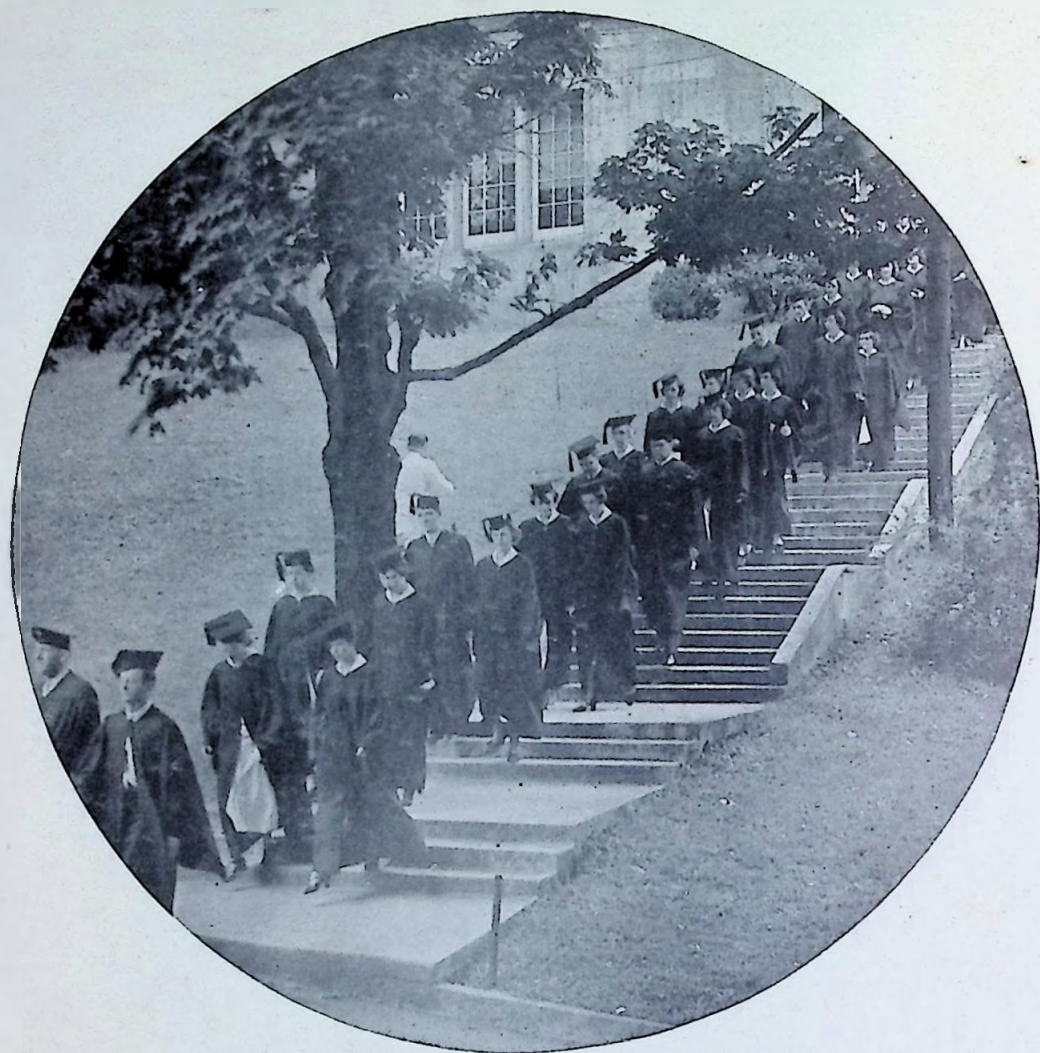
GUILFORD GLAZER



COMPLIMENTS OF

WALKER'S
CAFE

BURLINGTON



SENIOR CLASS
— OF —
CENTRAL HIGH SCHOOL

MAY WE, EXTEND TO EACH OF YOU
CONGRATULATIONS AND BEST WISHES.

CLARENCE F. COLEMAN COMPANY

• *Printing and Engraving* •

124 SOUTH CRUZE STREET • KNOXVILLE, TENNESSEE